

Crown Pastoral Land Tenure Review

**Lease name : GLENCOE
(ARROWTOWN)**

Lease number : PO 144

Conservation Resources Report - Part 2

As part of the process of Tenure Review, advice on significant inherent values within the pastoral lease is provided by Department of Conservation officials in the form of a Conservation Resources Report. This report is the result of outdoor survey and inspection. It is a key piece of information for the development of a preliminary consultation document.

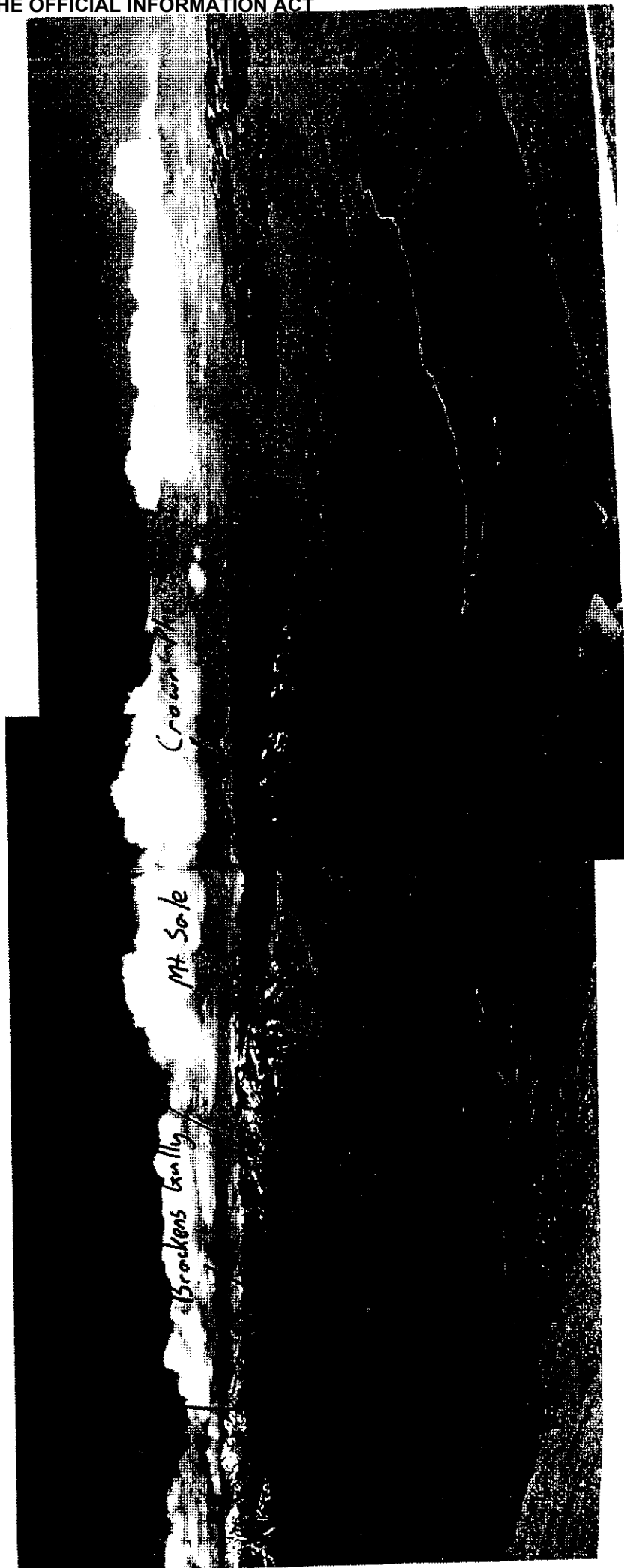
Note: Plans which form part of the Conservation Resources Report are published separately.

These documents are all released under the Official information Act 1982.

May

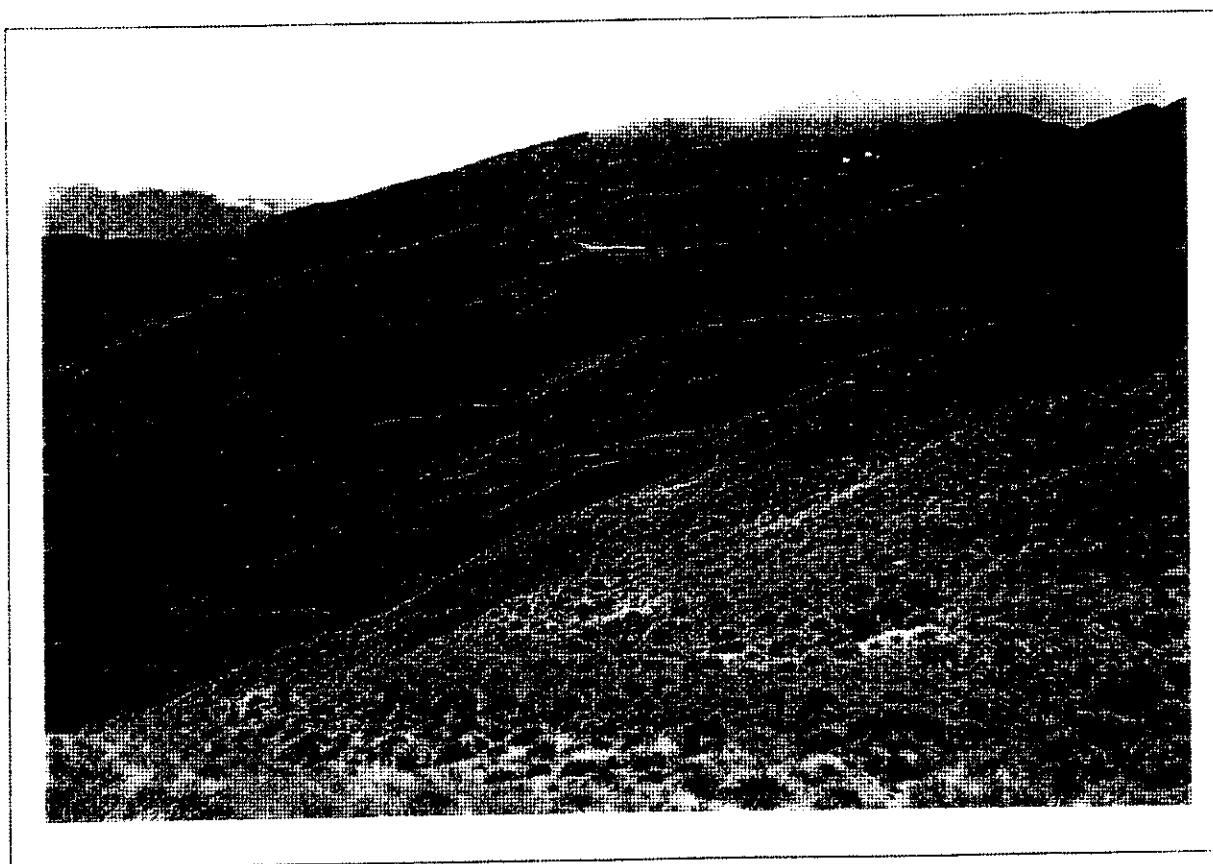
07

GLENCOE STATION





Chionochloa rigida/macra grasslands on Crown Range above Soho Creek - proposed conservation land (subject to grazing lease)

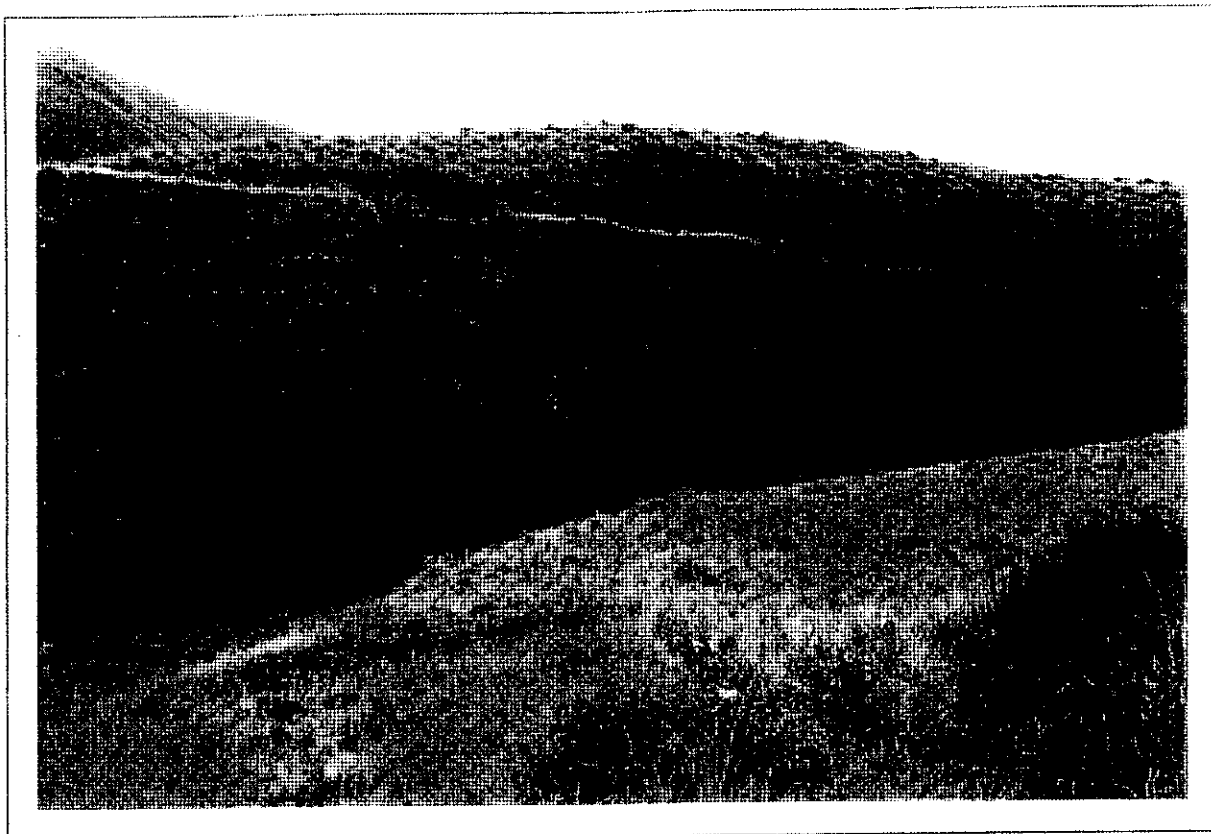




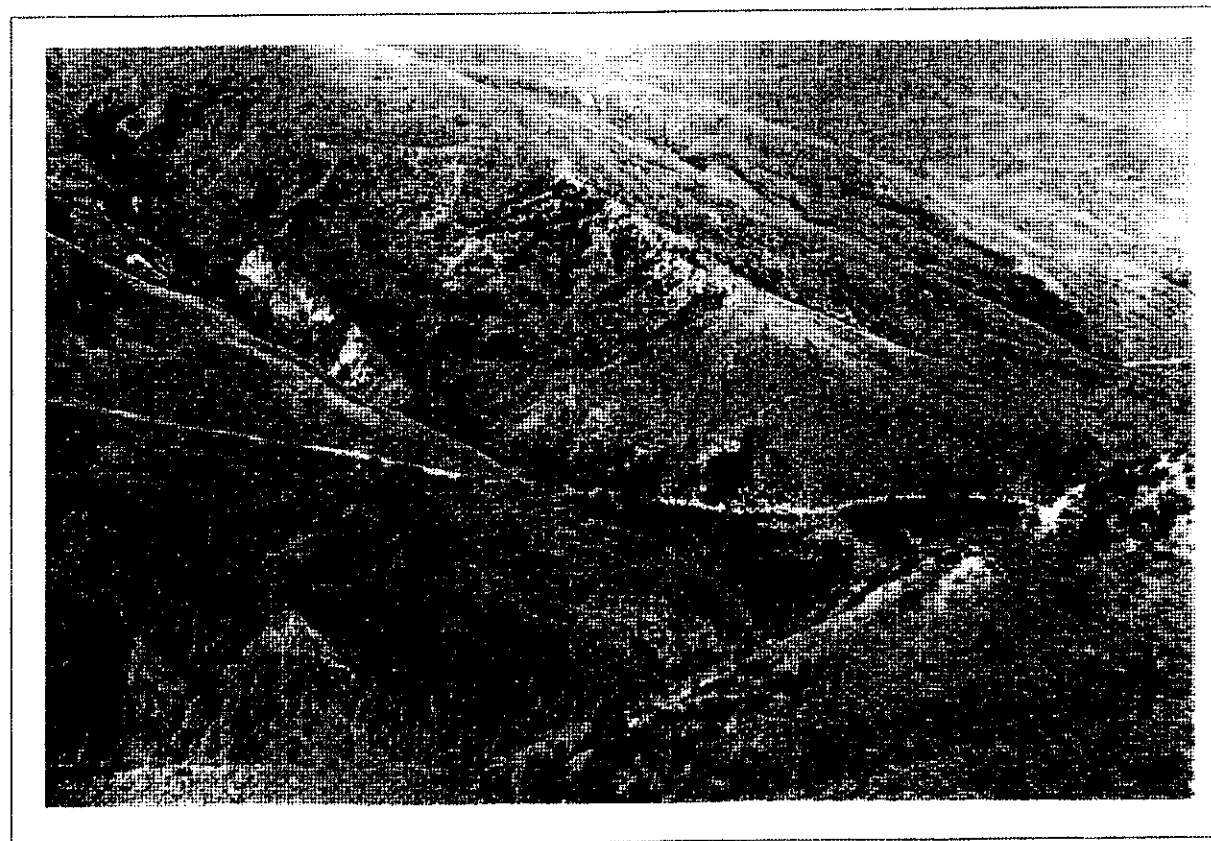
Brackens Gully gold workings - proposed conservation land (subject to grazing lease).



New Zealand falcon on Glencoe



Top water race and piping out of Brackens Gully - proposed conservation land.



New Chums Gully - proposed public access route: Tobins Track → Arrow River