

## **Crown Pastoral Land Tenure Review**

**Lease name : GLENTANNER**

**Lease number : PT 006**

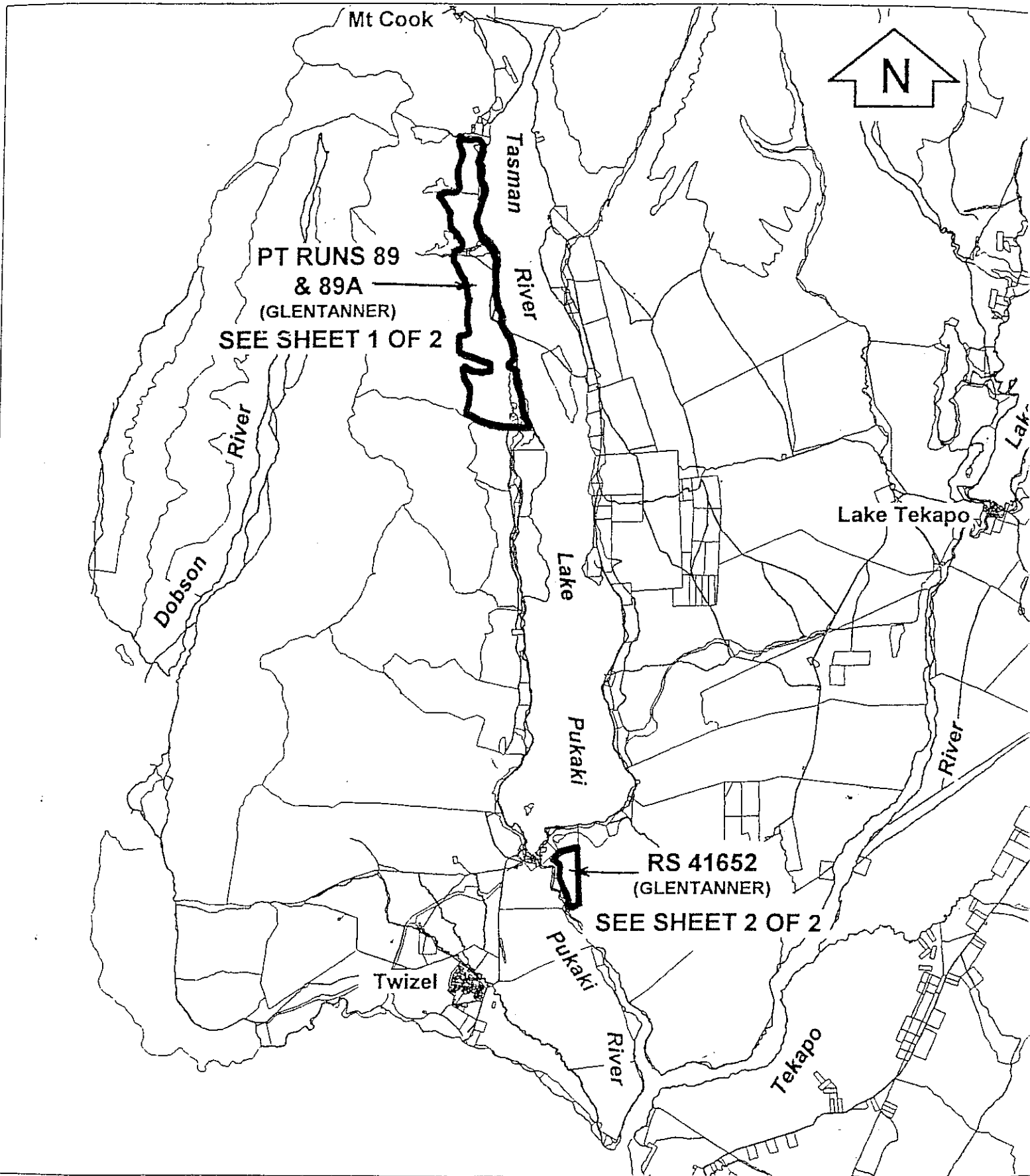
### **Due Diligence Report - Plans**

These plans attach to and support the Due Diligence Report.

They are released under the Official Information Act 1982.

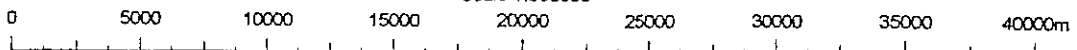
June

07

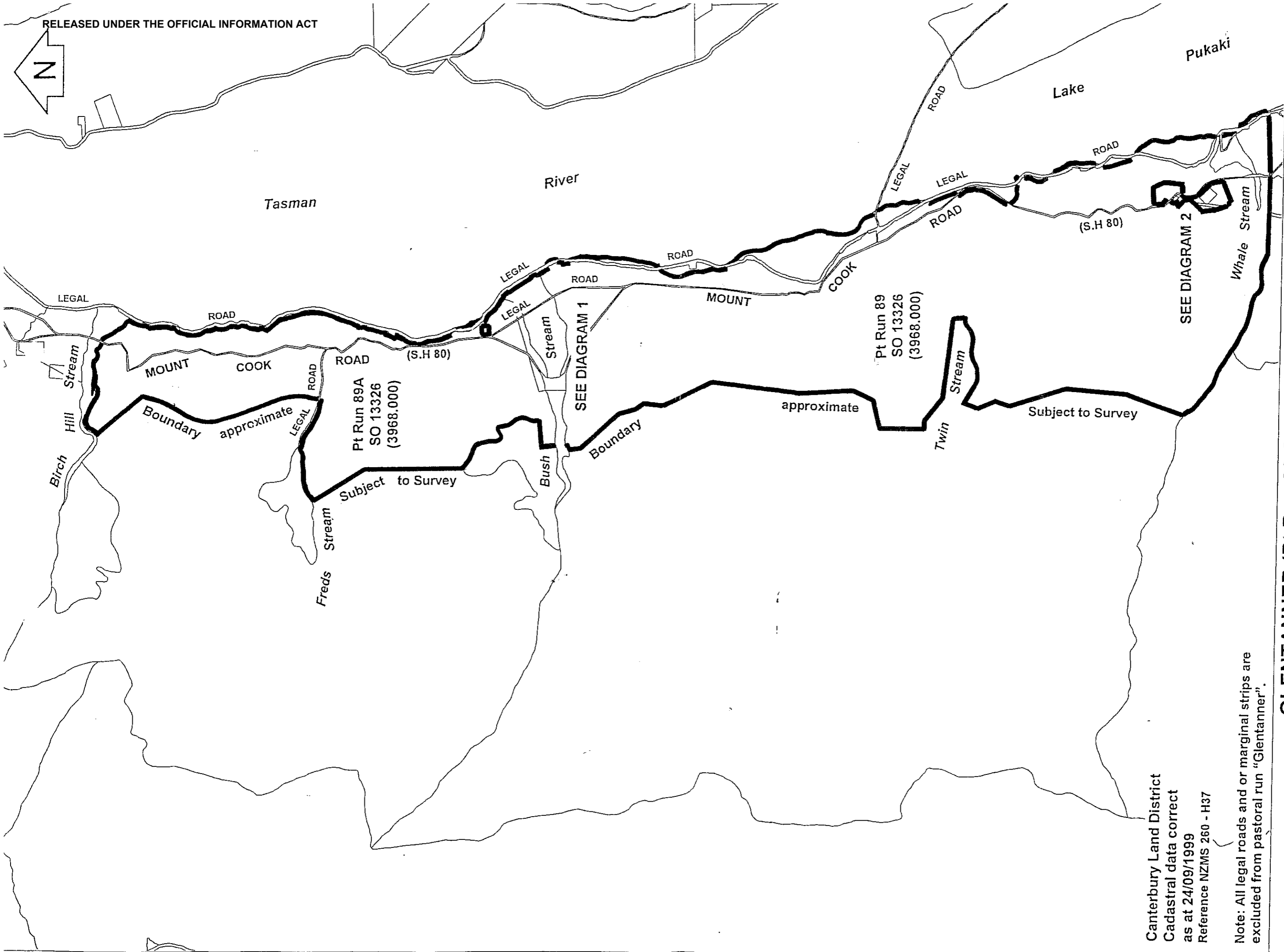
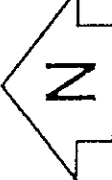


**GLENTANNER**

Scale 1:300000



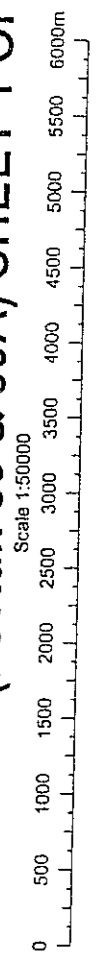
Canterbury Land District

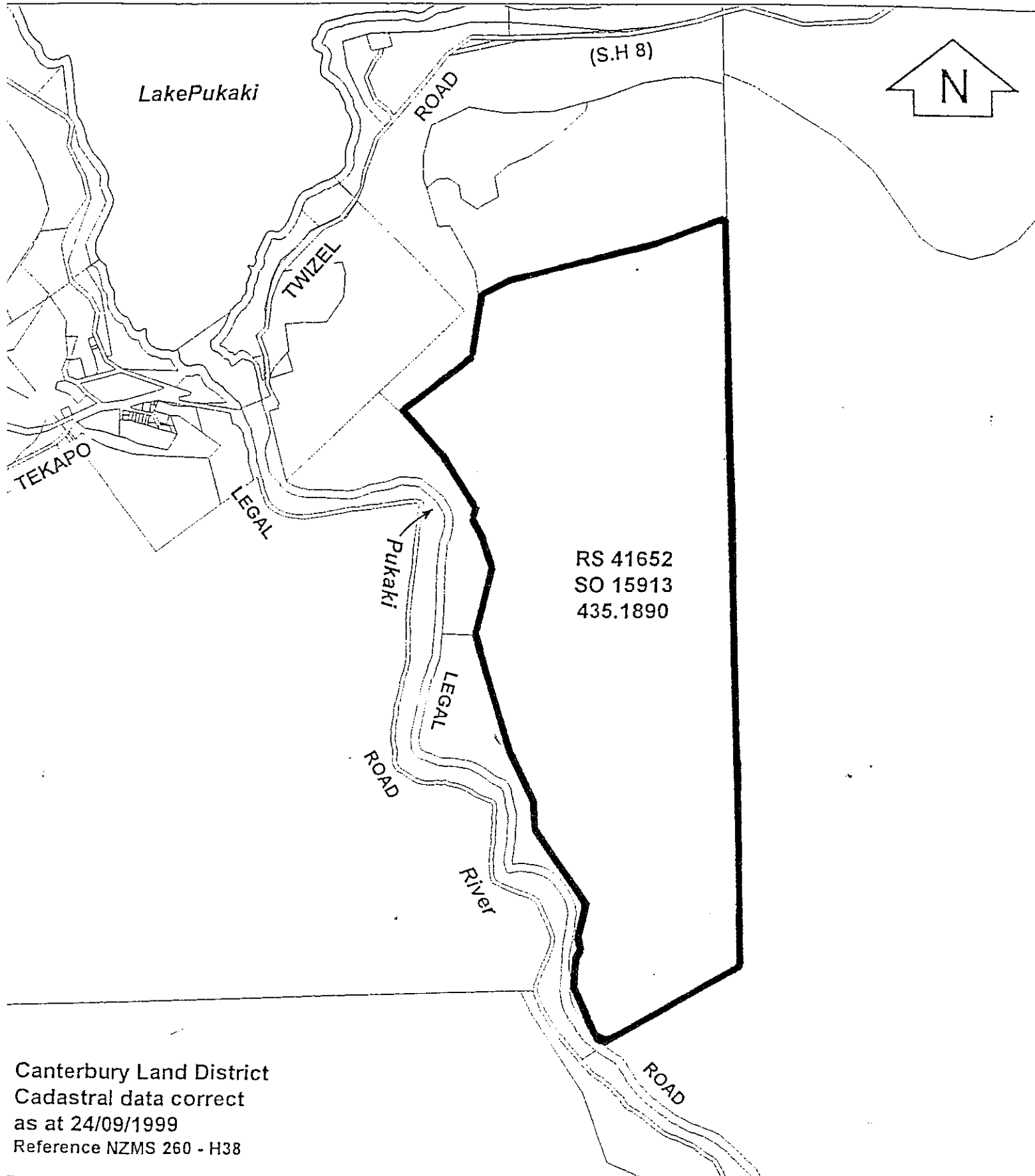


Canterbury Land District  
Cadastral data correct  
as at 24/09/1999  
Reference NZMS 260 - H37

Note: All legal roads and or marginal strips are  
excluded from pastoral run "Glentanner".

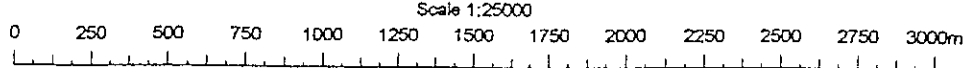
**GLENTANNER (Pt Run 89 & 89A) SHEET 1 OF 2**





Canterbury Land District  
Cadastral data correct  
as at 24/09/1999  
Reference NZMS 260 - H38

### GLENTANNER (RS 41652) SHEET 2 OF 2



Boundary approximate  
Subject to Survey

Pt Run 89A  
SO 13326  
(3968.000)

Pt Run 89  
SO 13326  
(3968.000)

Pt Run 89  
SO 13326  
(3968.000)

CROWN LAND  
SO 106  
0.4046

Pt Run 89  
SO 13326  
(3968.000)

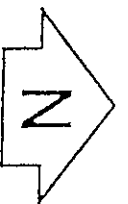
Pt Run 89A  
SO 13326  
(3968.000)

Pt Run 89A  
SO 13326  
(3968.000)

Pt Run 89  
SO 13326  
(3968.000)

Pt Run 89  
SO 13326  
(3968.000)

Pt Run 89  
SO 13326  
(3968.000)



Bush

MOUNT

COOK

(S.H 80)

Stream

LEGAL

LEGAL

ROAD

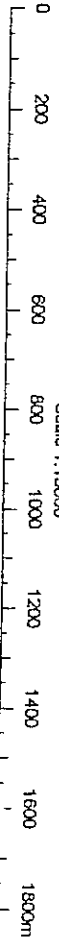
ROAD

Tasman

River

DIAGRAM 1 (GLENTANNER)

Scale 1:15000



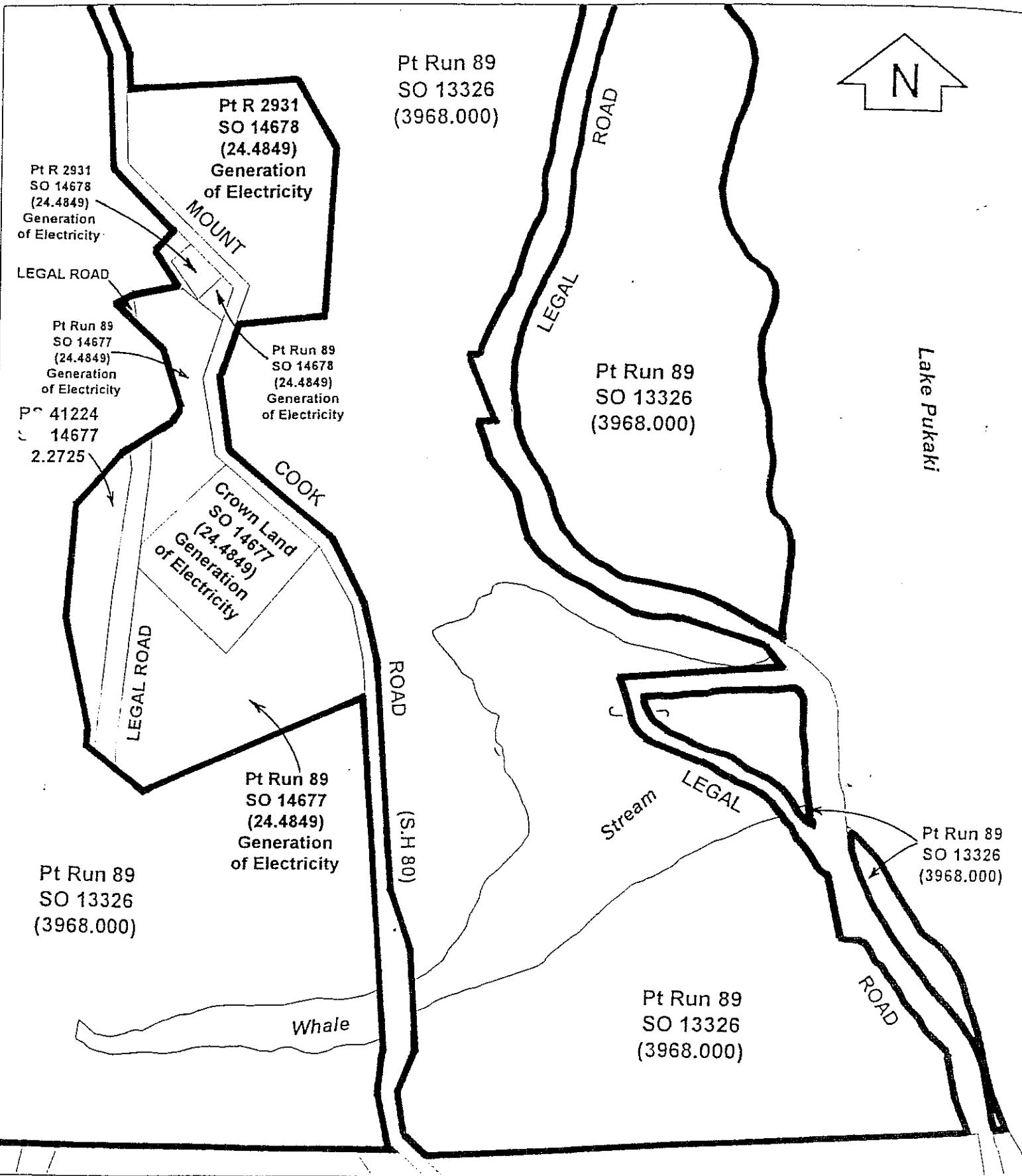


DIAGRAM 2 (GLENTANNER)

