

## **Crown Pastoral Land Tenure Review**

**Lease name : GLENTANNER**

**Lease number : PT 006**

### **Due Diligence Report (including Status Report) - Part 2**

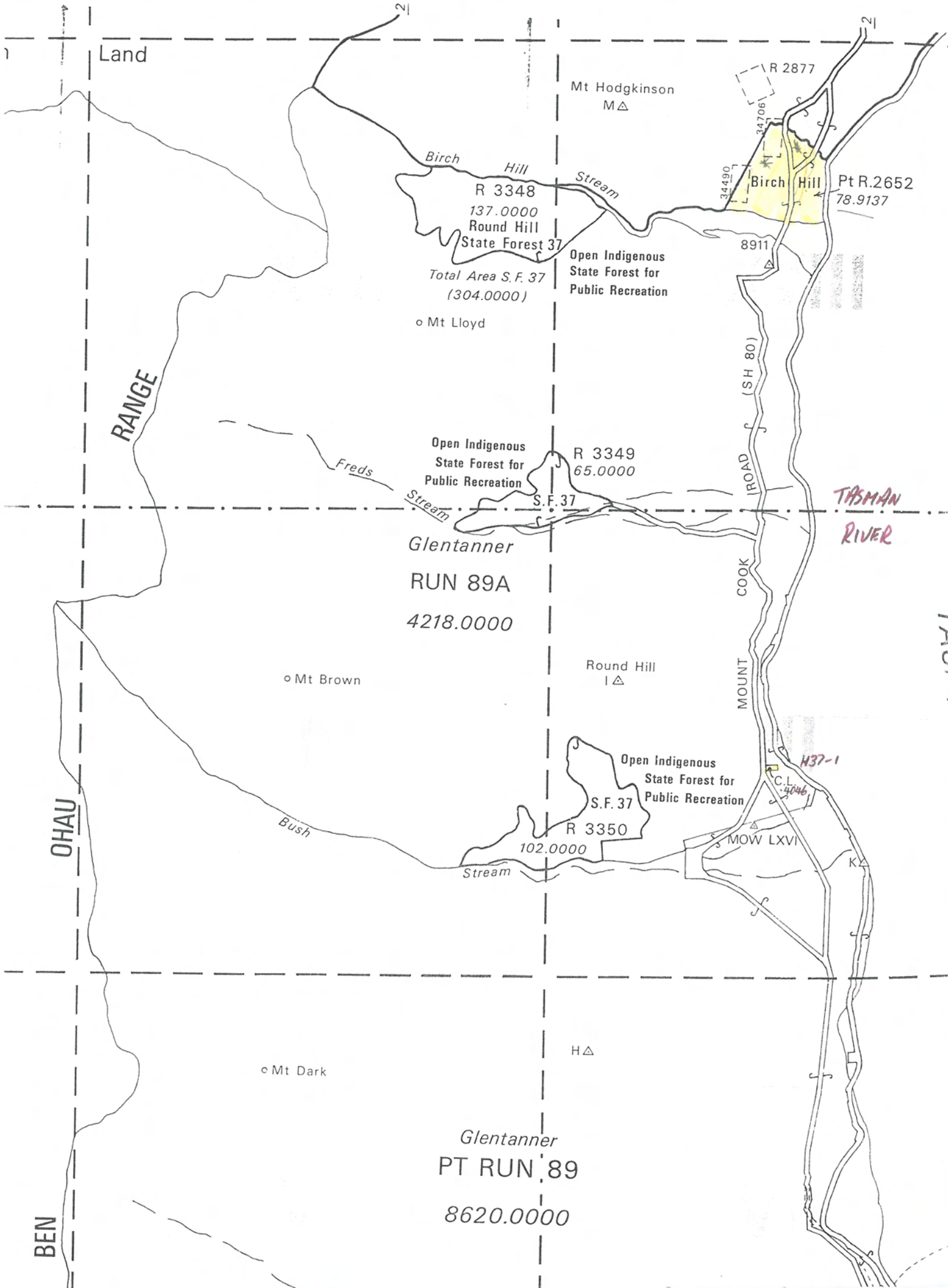
This report and attachments results from a pre-Tenure Review assessment of the pastoral lease for the purpose of confirming land available for Tenure Review and any issues, rights or obligations attaching to it. The information is gathered from files and other sources available to the LINZ contractor.

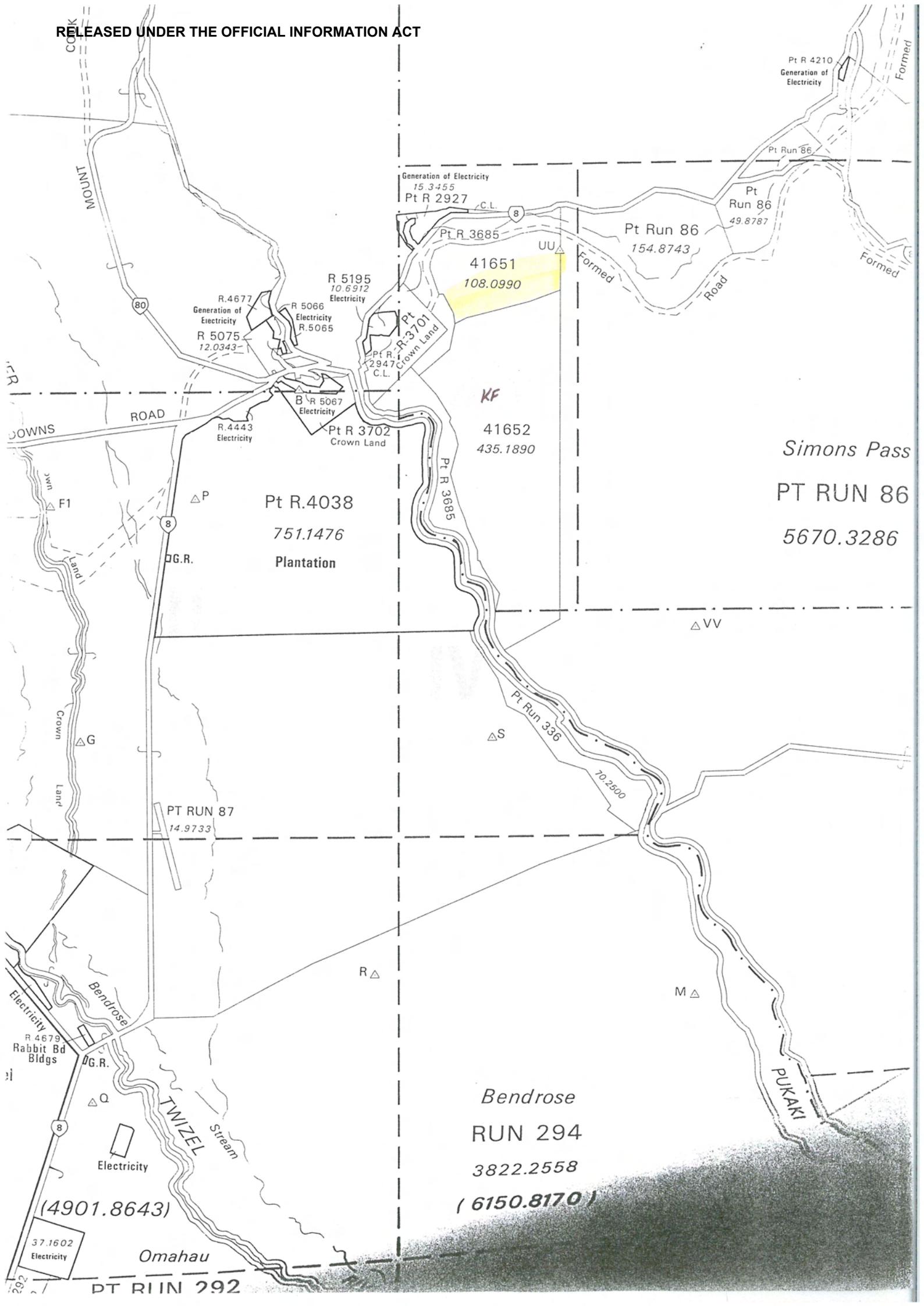
Part of the information relates to research on the status of the land, resulting in a Status Report that is signed off by a LINZ approving officer. The remainder of the information is not analysed for relevancy or possible action until required, and LINZ does not guarantee its accuracy or completeness as presented.

The report attached is released under the Official Information Act 1982.

**June**

**07**





RELEASED UNDER THE OFFICIAL INFORMATION ACT

Pt R 4210  
Generation of  
Electricity

Generation of Electricity  
15.3455  
Pt R 2927

Pt Run 86  
154.8743

Pt Run 86  
49.8787

R 5195  
10.6912  
Electricity

41651  
108.0990

R.4677  
Generation of  
Electricity  
R 5075  
12.0343

R 5066  
Electricity  
R.5065

Pt R.3701  
Crown Land  
Pt R.2947  
C.L.

KF

41652  
435.1890

Simons Pass  
PT RUN 86  
5670.3286

Pt R.4038  
751.1476  
Plantation

R.4443  
Electricity

Pt R 3702  
Crown Land

B R 5067  
Electricity

Pt R 3685

△ VV

△ S

Pt Run 336  
70-2500

PT RUN 87  
14.9733

R △

M △

Bendrose  
RUN 294  
3822.2558  
( 6150.8170 )

R 4679  
Rabbit Bd  
Bldgs

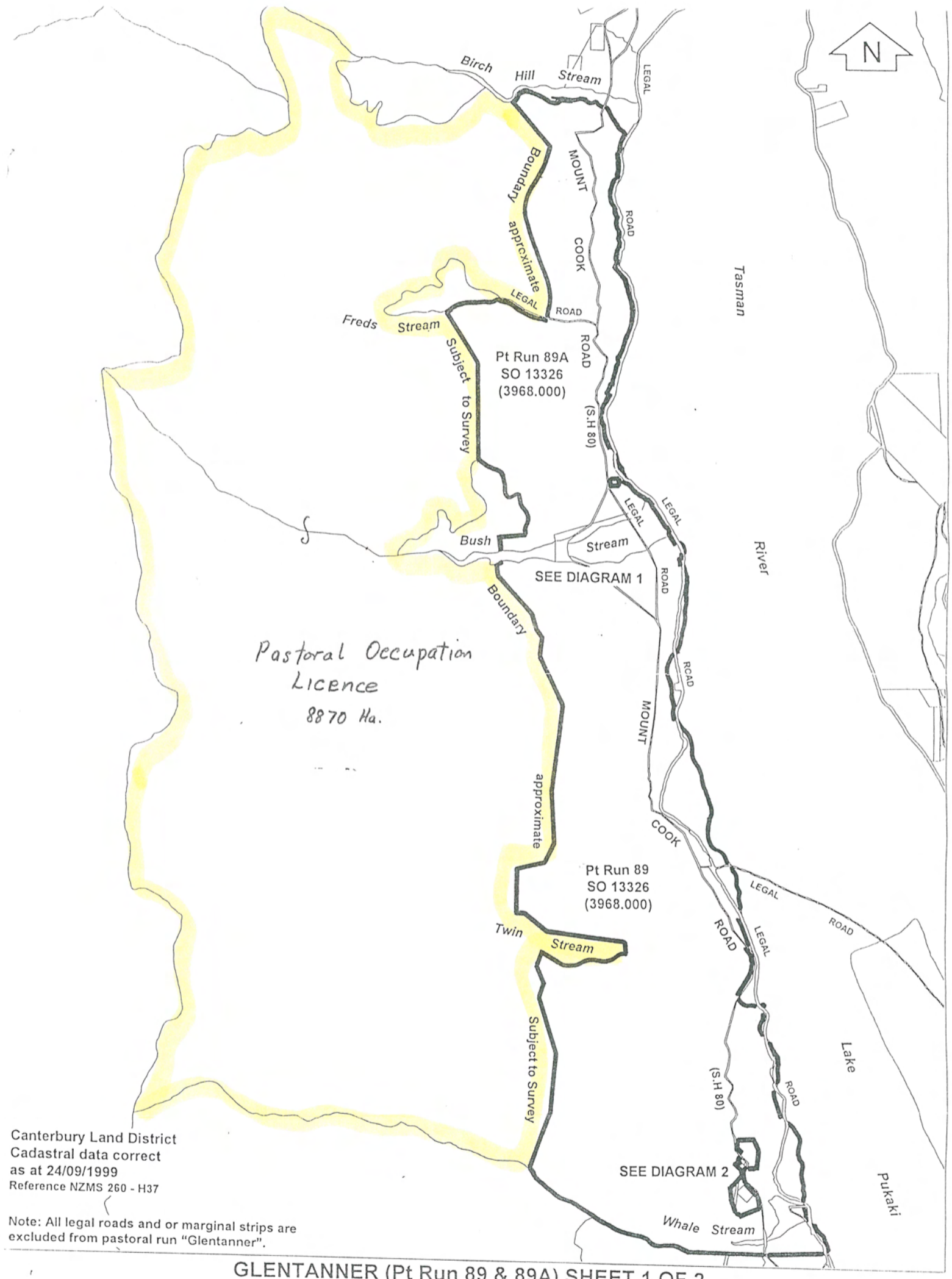
Electricity

(4901.8643)

37.1602  
Electricity

Omahau

PT RUN 292



Canterbury Land District  
 Cadastral data correct  
 as at 24/09/1999  
 Reference NZMS 260 - H37

Note: All legal roads and or marginal strips are  
 excluded from pastoral run "Glentanner".

GLENTANNER (Pt Run 89 & 89A) SHEET 1 OF 2

