

## **Crown Pastoral Land Tenure Review**

**Lease name: HOME HILLS**

**Lease number: PO 383**

### **Public Submissions - Part 3**

These submissions were received as a result of the public advertising of the Preliminary Proposal for Tenure Review.

**October**

**06**



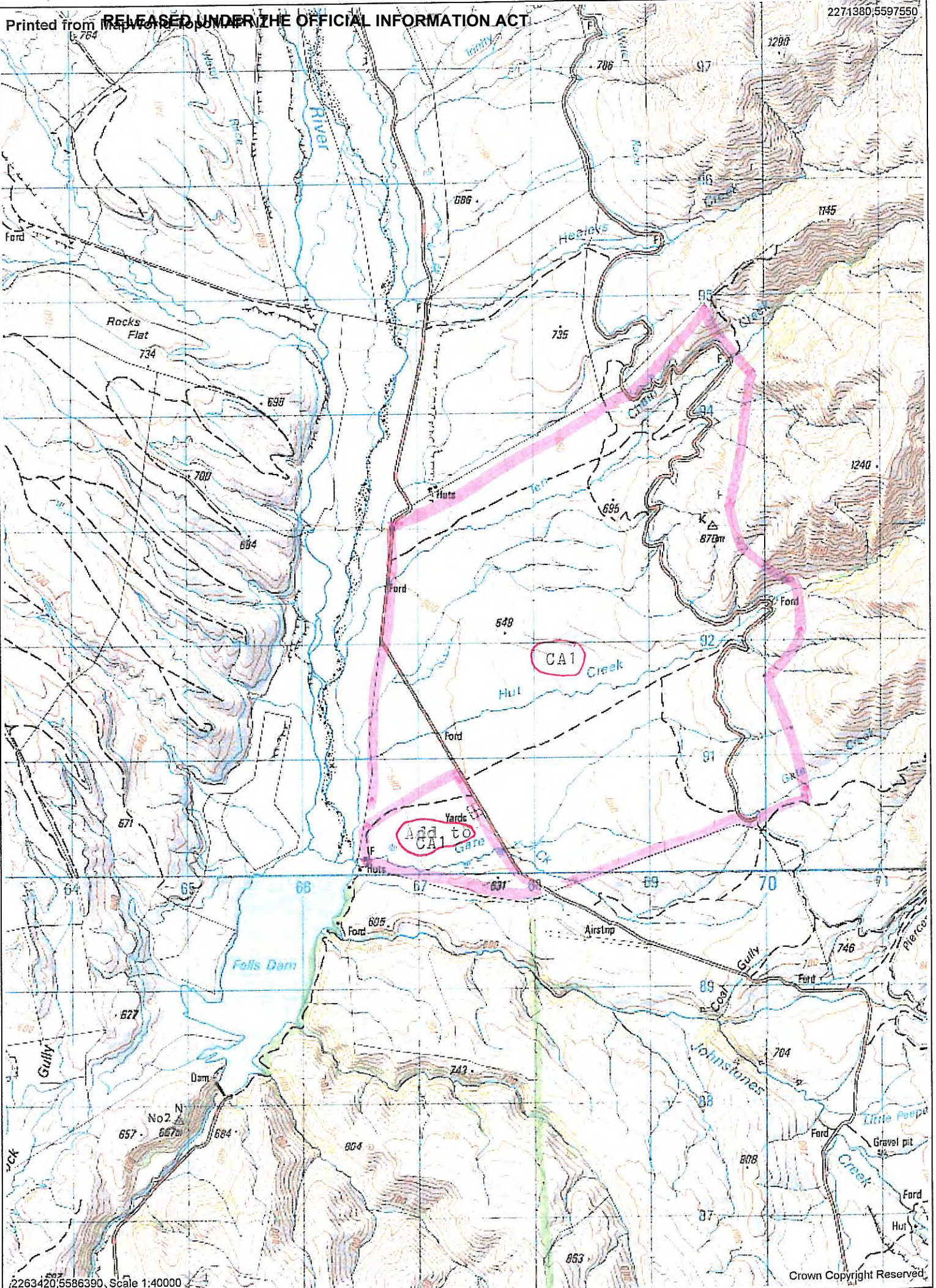






Photo # Shows CA3 with the huts and the area above which we believe should be added to CA1  
4



Photo # Shows the lake behind the dam, the huts and the area in front of which should be included in CA1  
2





Photo # 3 Shows the area behind the huts, which we believe should be added to CA1 to provide continuity in the landscape.



Photo # 4 Shows a view from near the water race looking down towards the lake and the lower flats.



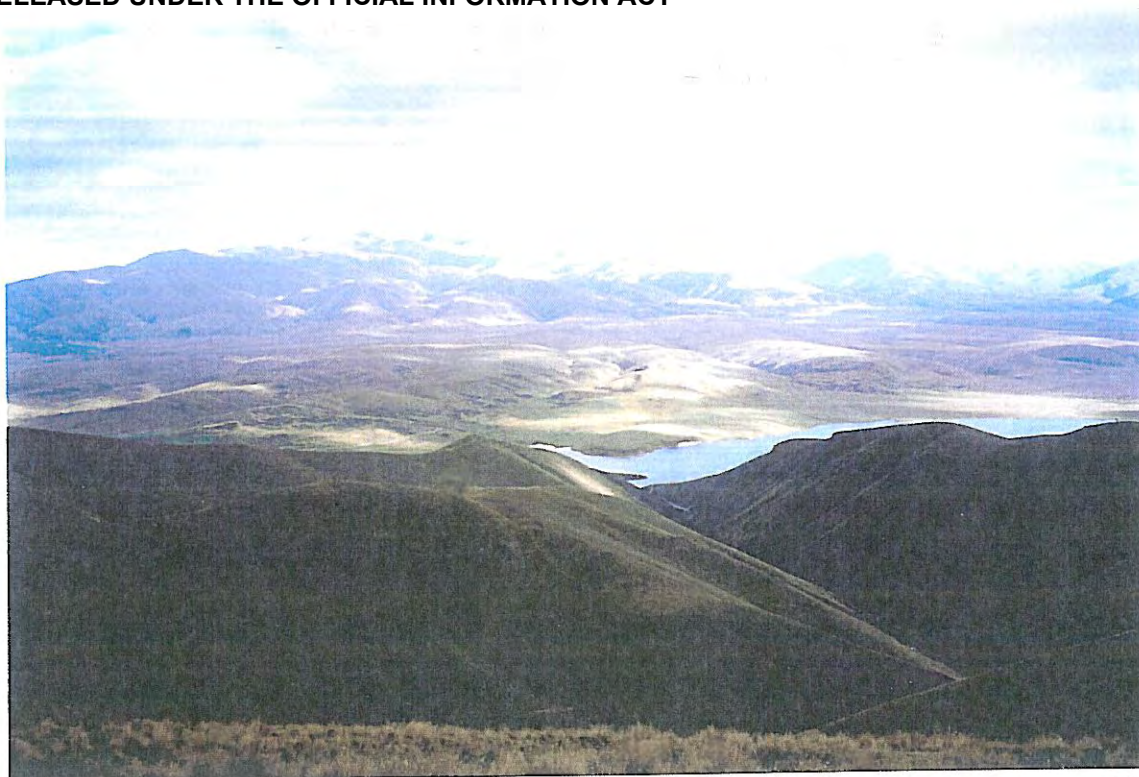


Photo # 5 Shows the view from near Trig F of the upper Manuherikia Basin behind the lake, and Mt St Bathans behind - an outstanding view well worthy of a walk up the hill.



Photo # 6 Shows a view of the upper Manuherikia basin with the flats in the middle distance and the Hawkdun Range behind - another outstanding view.