

Crown Pastoral Land Tenure Review

Lease name: HOME HILLS

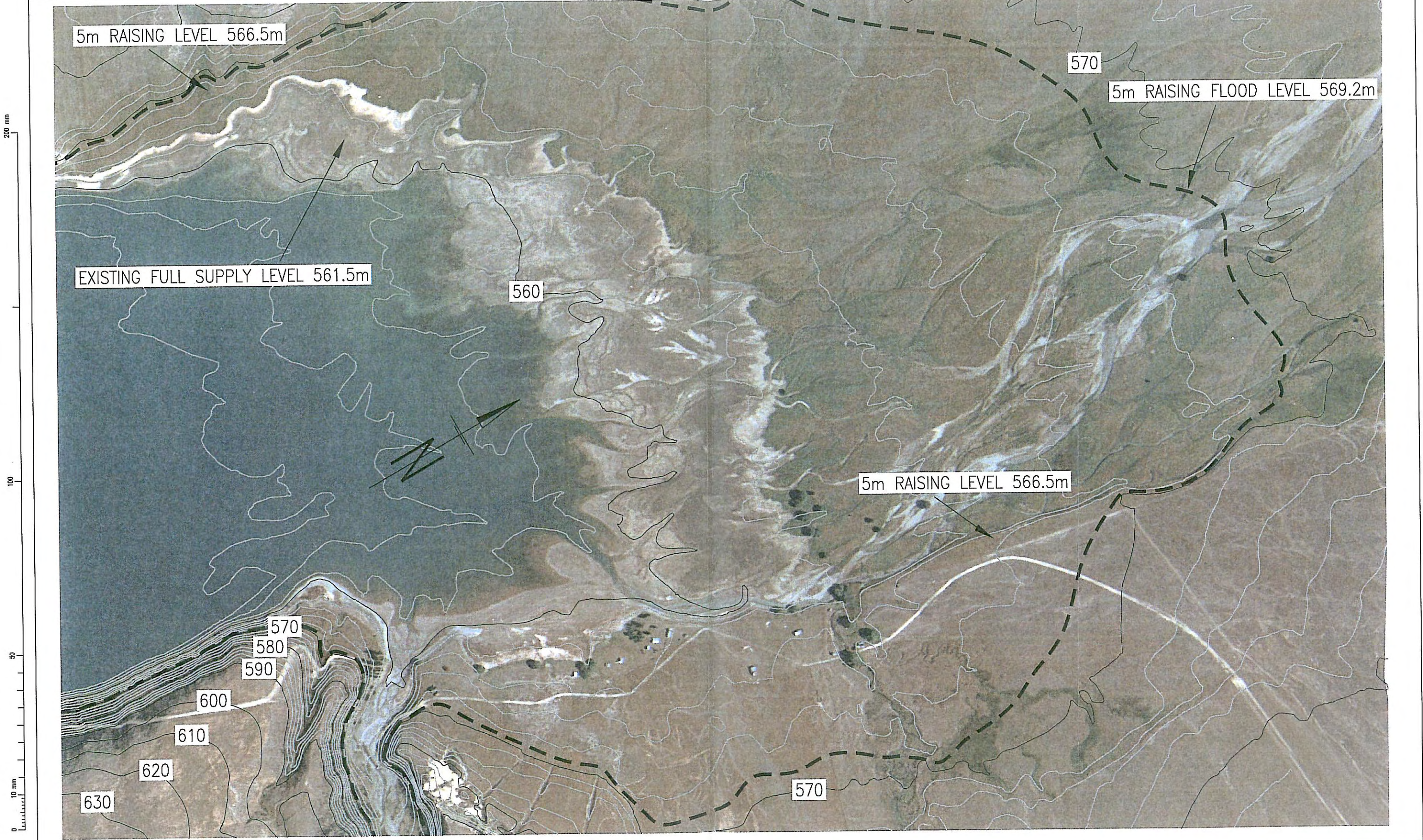
Lease number: PO 383

Public Submissions - Part 5

These submissions were received as a result of the public advertising of the Preliminary Proposal for Tenure Review.

October

06



NOTE:
 CONTOURS BASED ON 11-04-1964 SURVEY.
 AERIAL PHOTOGRAPH FLOWN ON 02-03-2003.
 - (WL = 558.35m).
 PROJECTED WATER LEVEL CONTOURS ARE
 APPROX. AND SUBJECT TO DETAILED DESIGN.

	BY	CHECKED	DATE
DESIGN	I G Walsh		12-12-05
DRAWN	D Wilson		12-12-05
APPROVED			
This drawing and its contents are the property of Opus International Consultants Limited. Any unauthorised employment or reproduction, in full or in part, is forbidden.			
AMENDMENT			

FALLS DAM
 COMPANY

OPUS
 INTERNATIONAL CONSULTANTS

Dunedin Office
 Private Bag 1913
 Dunedin, New Zealand
 Tel: +64 03 474 8899
 Fax: +64 03 474 8995

TITLE FALLS DAM COMPANY DAM RAISING					
5m RAISING - LEVEL 566.5m					
STATUS Preliminary			FILE 6cw01.30		
SCALE 1:5000	PLOT DATE 12-12-2005	FEATURE IDENTIFIER 7/547/21	CODE 5704	SHEET 6	REVISION

13

Dave Payton

From: Sue Maturin [s.maturin@forestandbird.org.nz]
Sent: Monday, 26 June 2006 12:28
To: dave payton
Subject: Home Hills Submission
Attachments: Sub to Home Hills.doc

Dear Dave

Please find attached my Home Hills submission. You may need to view it in print layout mode as there are maps inserted.

Sue Maturin

Southern Office

Forest and Bird
Box 6230
Dunedin
0064 3 477 9677 ph
s.maturin@forestandbird.org.nz

26th June 2006

The Commissioner of Crown Lands
Opus International Ltd.,
144 Rattray Street,
PO Box 1913
DUNEDIN

Dear Sir,

Re: Preliminary Proposal for Tenure Review: Home Hills

1.0 Introduction

I write on behalf of the Royal Forest and Bird Protection Society, which represents over 38,000 members nationwide in 56 branches. The Society has been an active advocate of the protection and conservation of New Zealand's natural and physical resources since 1923.

The Society has been looking forward to this tenure review as it offers an important opportunity to protect some 'At Risk' and critically 'Under protected Environments' and to further progress towards Oteake Conservation Park.

2.0 CA1 Approximately 1374 ha to be returned to full Crown ownership

The Society strongly endorses the proposal to protect the Manuherikia Flats and low foothills abutting the Hawkdun Range. This area is not only valuable for its important contribution to protecting a full ecological sequence from the Valley floor to the Mountain Tops, but also because Home Hills provides perhaps the best remaining opportunity to protect a relatively large area of alluvial valley floors (known as E environments in the Land Environments of New Zealand classification system, LENZ) and well drained alluvial flats (K environments). See Figure 1 in Appendix One. The E environments are regarded as being at risk as they have less than 30% indigenous cover remaining. Less than 3.8% of the E Environment occurring on Home Hills is legally protected on conservation lands. Similarly the K environments on Home Hills are also regarded as being 'At Risk'.

Home Hills also contain some important eastern South Island plain and intermontane environments known as 'N Environments'. These environments are also mapped as critically under protected.

While it is pleasing to see that some of these lowland threatened environments are proposed for return to full crown ownership, it appears that significant areas are also

proposed for free holding despite having been recognised by the Department of Conservation as having significant inherent values.

Much of the lease is well below 700 m in altitude. The Otago Conservation Management Strategy notes that Falls Dam, Upper Manuherikia is one of the best remaining examples of an intact valley floor short tussock grassland which are rare in New Zealand, let alone Otago. In many parts of the lease there are nationally significant assemblages of invertebrate fauna, threatened wildlife, and threatened plants.

The Society considers that the significant landscape and recreational values of the Falls Dam paddock have been overlooked.



Falls Dam paddock. The Society recommends that this paddock be included in CA1, for its significant inherent values relating to landscape, open space, recreational opportunities, access to water, and biodiversity values – i.e. it is an At Risk environment and there remains sufficient indigenous cover to enable eventual restoration. The Society accepts that the cultivated area be freeholded. This area should not have been granted a discretionary consent, as it clearly had significant inherent values that would have contributed to the biodiversity and conservation values of the proposed Oteake Conservation Park.

The most obvious entrance to the proposed Oteake Conservation Park will be up the Home Hills Runs road, thus people will enter the park at CA1. The Dam Paddock is the obvious area for any small scale conservation infrastructure associated with the Park. As people naturally focus on water, it is likely that people will want to take the shortest route from Home Hills to the dam, ie across the Dam paddock. This paddock has important open space values, and currently retains a relatively unmodified appearance which is imminently threatened by cultivation, and possibly long term developments associated with the proposed park. Such cultivation immediately adjacent to the Park and between the dam and the Park entrance will significantly detract from the Park. The Dam its self is already an important recreational area and it makes little sense to virtually separate it from the Park.