

Crown Pastoral Land Tenure Review

Lease name : HUKARERE

Lease number : PO 009

Conservation Resources Report - Part 2

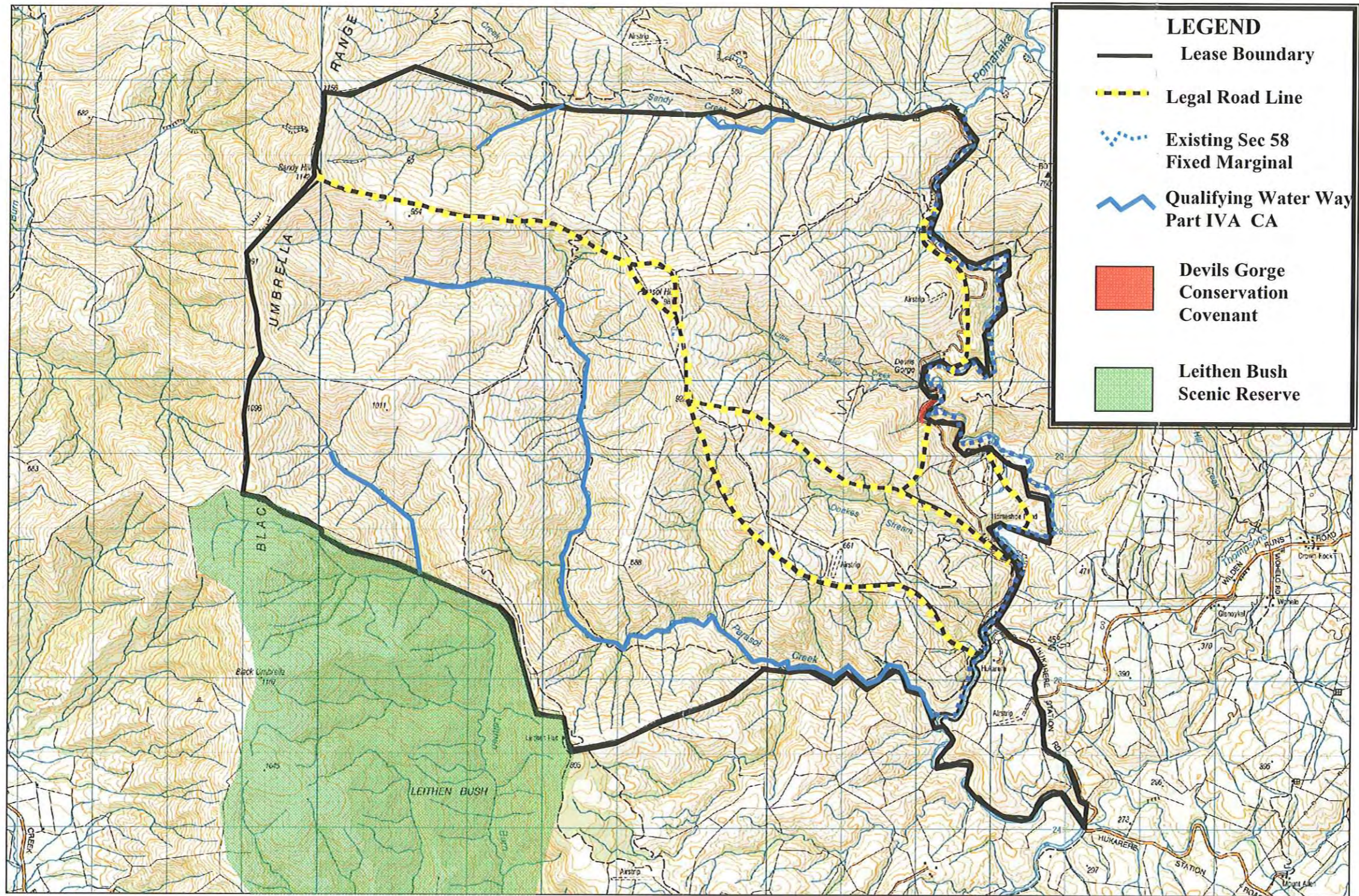
As part of the process of Tenure Review, advice on significant inherent values within the pastoral lease is provided by Department of Conservation officials in the form of a Conservation Resources Report. This report is the result of outdoor survey and inspection. It is a key piece of information for the development of a preliminary consultation document.

The report attached is released under the Official Information Act 1982.

4.2 Maps

- 4.2.1 Topographic and Cadastral
- 4.2.2 Landscape Units
- 4.2.3 Values – Ecological-Recreation
- 4.2.4 Land Environments of New Zealand (LENZ)
- 4.2.5 Vegetation Units

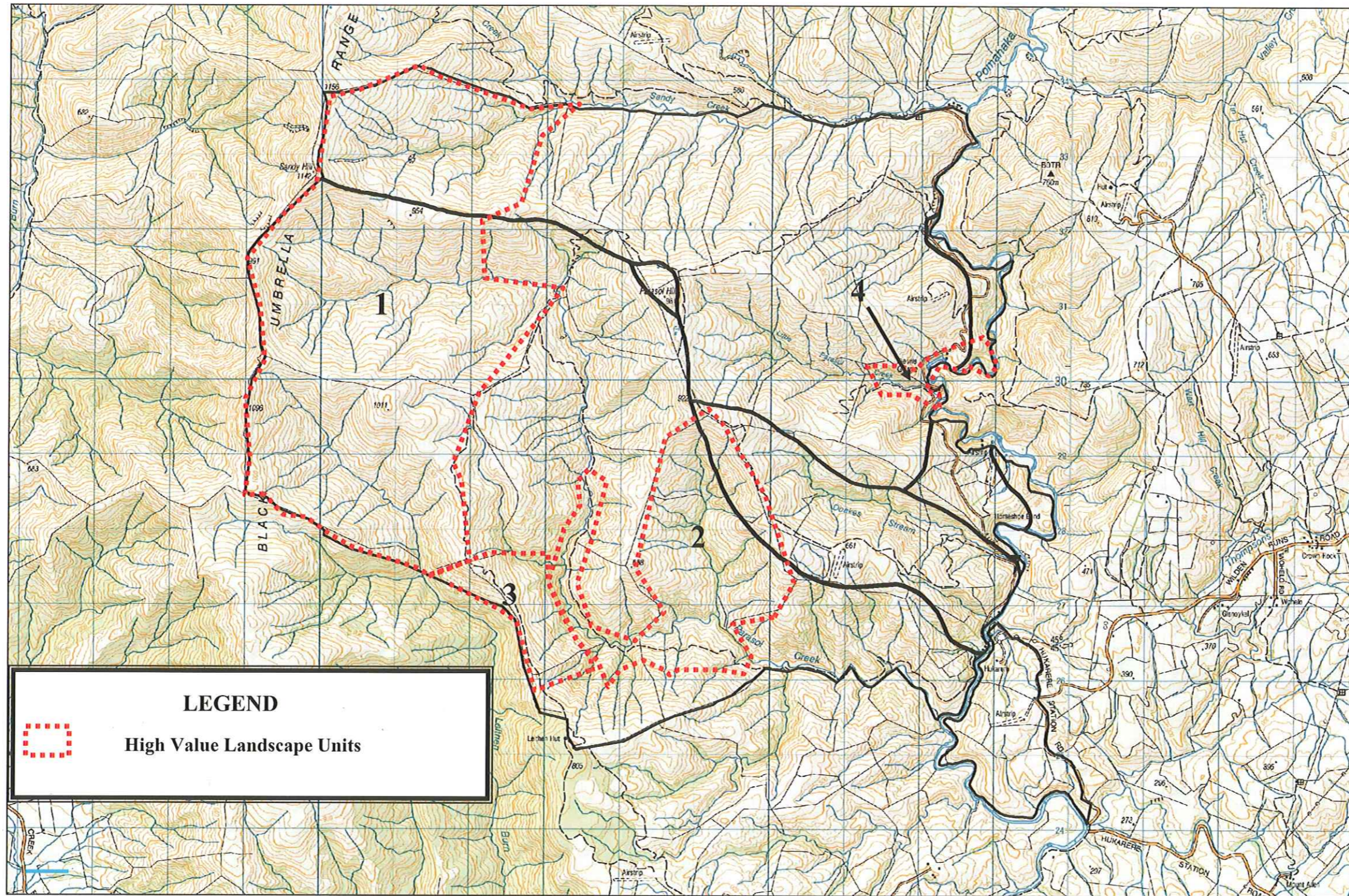
Map 4.2.1 Hukarere – Topo Cadastral Plan



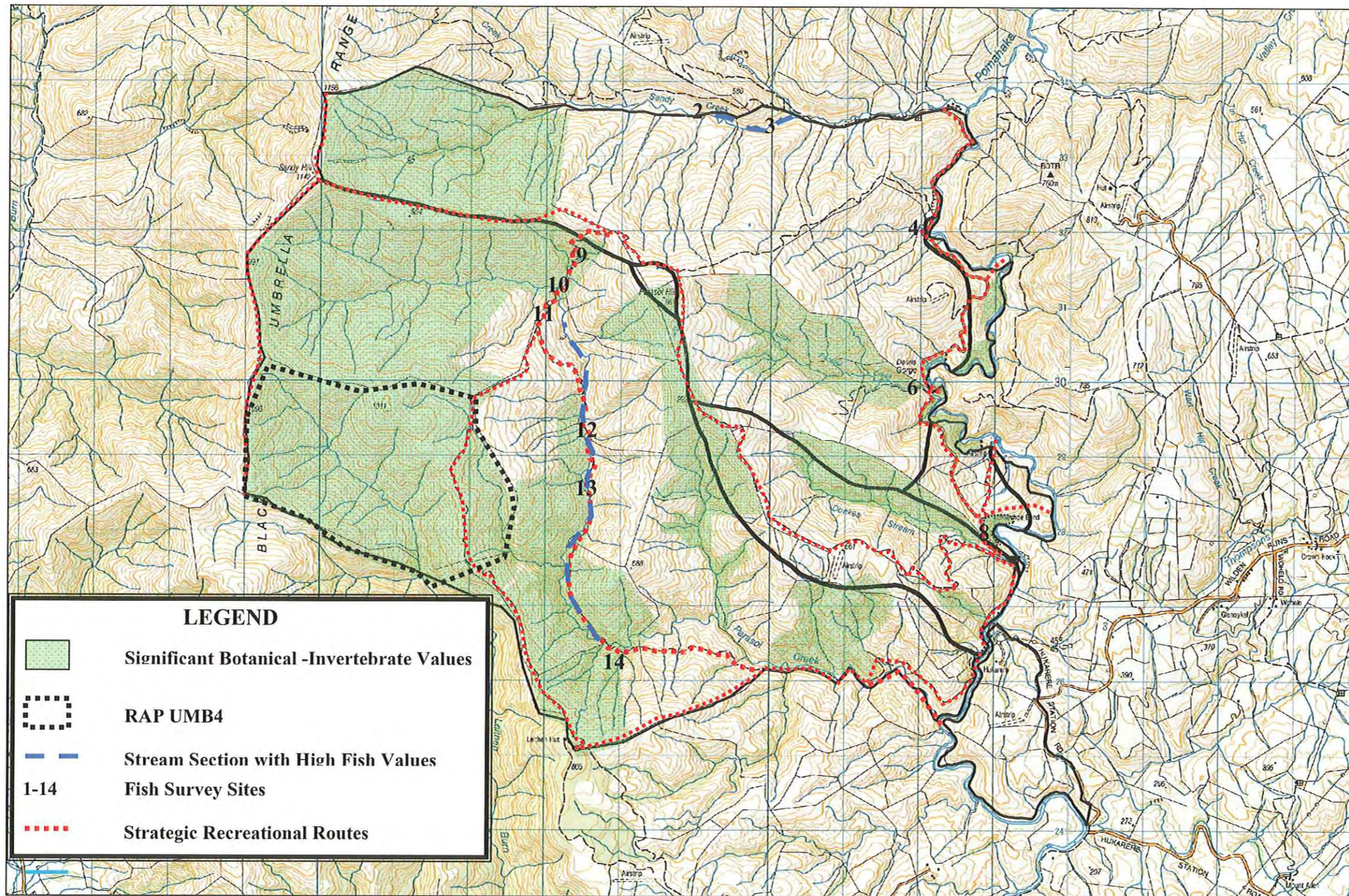
LEGEND

- Lease Boundary
- - - Legal Road Line
- ... Existing Sec 58 Fixed Marginal
- ~ Qualifying Water Way Part IVA CA
- Devils Gorge Conservation Covenant
- Leithen Bush Scenic Reserve

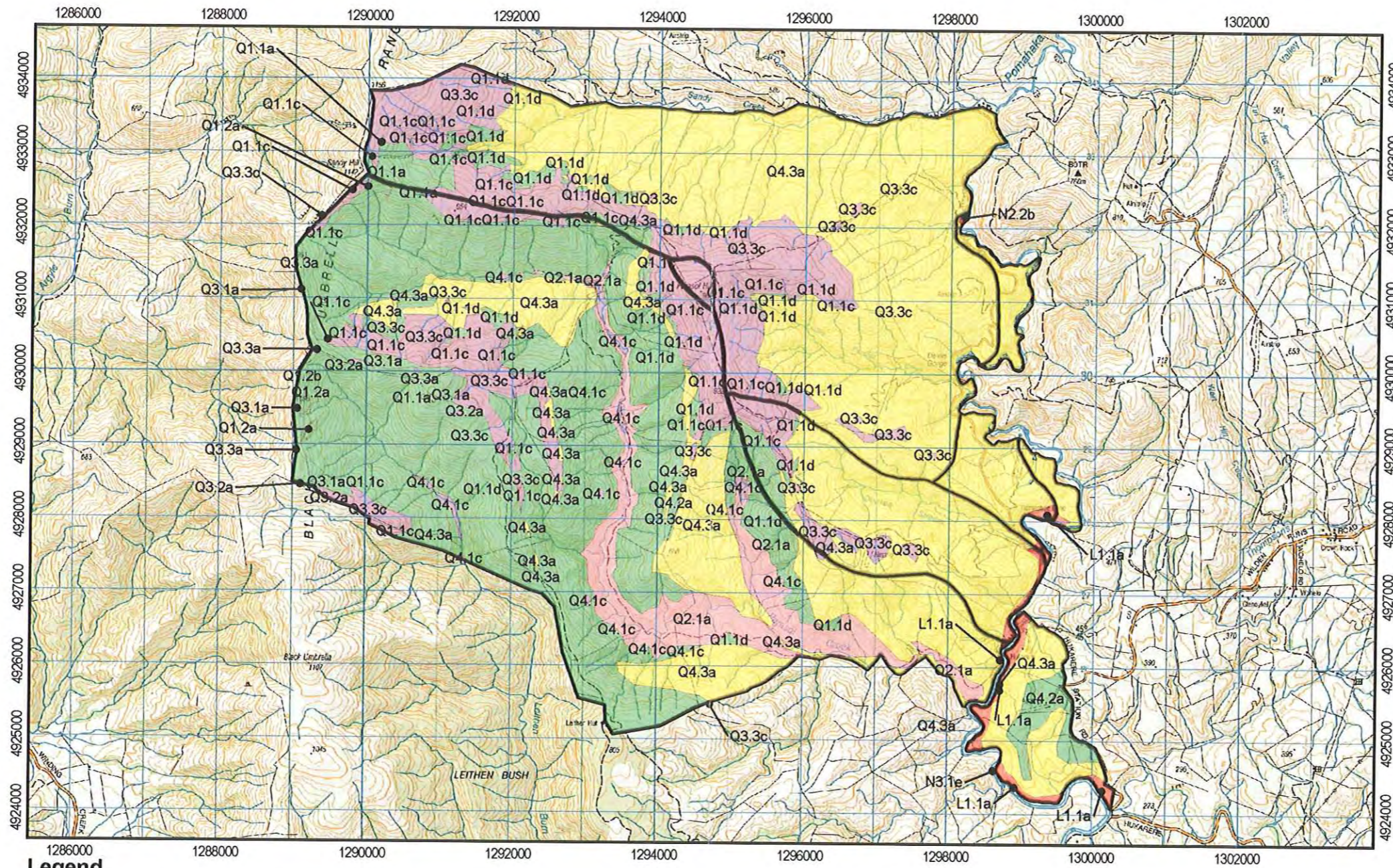
Map 4.2.2 Hukarere Landscape Values Plan



Map 4.2.3 Hukarere Ecological-Recreation Values Plan



Map 4.2.4 Hukarere LENZ Plan



- Legend**
- Acutely Threatened
 - At Risk
 - Chronically Threatened
 - Critically Underprotected
 - No Threat Category
 - Underprotected

Hukarere Station



Map 4.2.5 Vegetation Units Plan

