

## **Crown Pastoral Land Tenure Review**

**Lease name : KIRKLISTON**

**Lease number : PT 119**

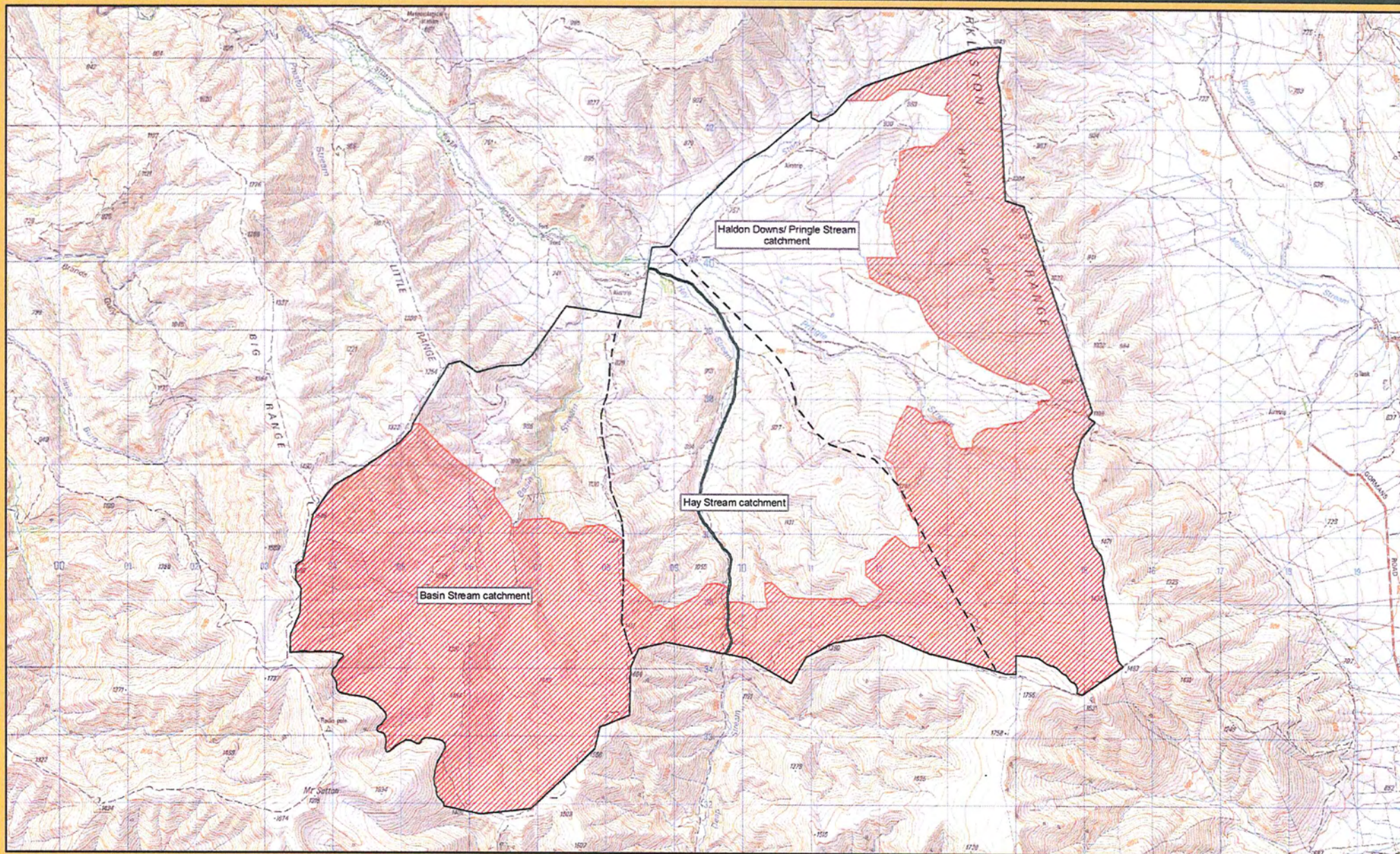
### **Plan attaching to the Conservation Resources Report - Invertebrate Values Map**

The following plan forms page XX of the Conservation Resources Report provided by the Department of Conservation.

It is released under the Official information Act 1982.


**September 09**



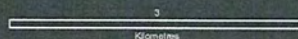


# Kirkliston PL - Invertebrate Values

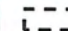

# 2


 Department of Conservation  
 Te Papa Atawhai

New Zealand Government



### Legend

-  Kirkliston boundary
-  Invertebrate units
-  Invertebrate values