

## **Crown Pastoral Land Tenure Review**

**Lease name : KIRKLISTON**

**Lease number : PT 119**

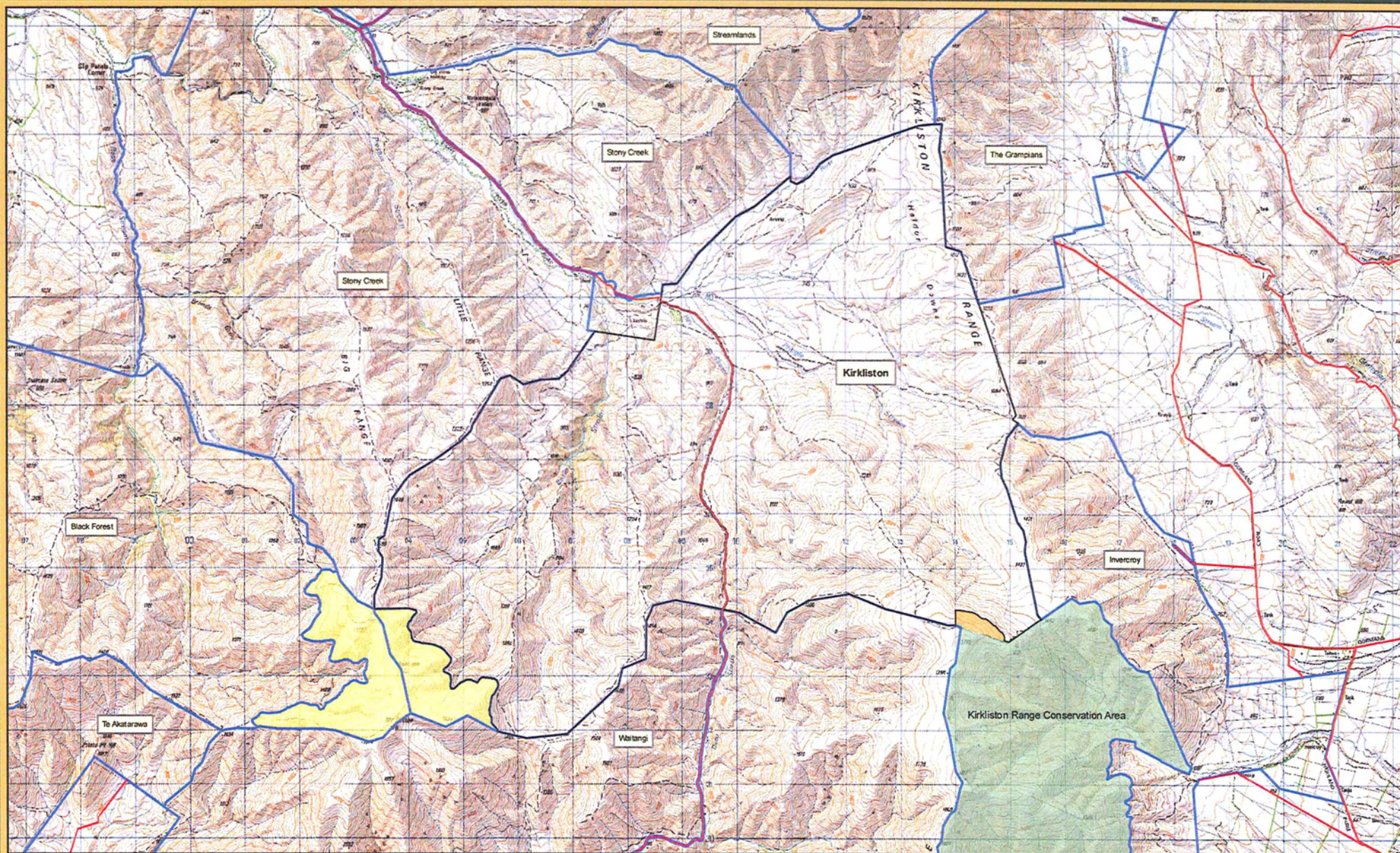
**Plan attaching to the Conservation  
Resources Report**

- Topo/Cadastral Map**
- LENZ Map**

The following plan forms page XX of the Conservation Resources Report provided by the Department of Conservation.

It is released under the Official information Act 1982.

**September 09**



## Kirkliston PL - Topo/Cadastral



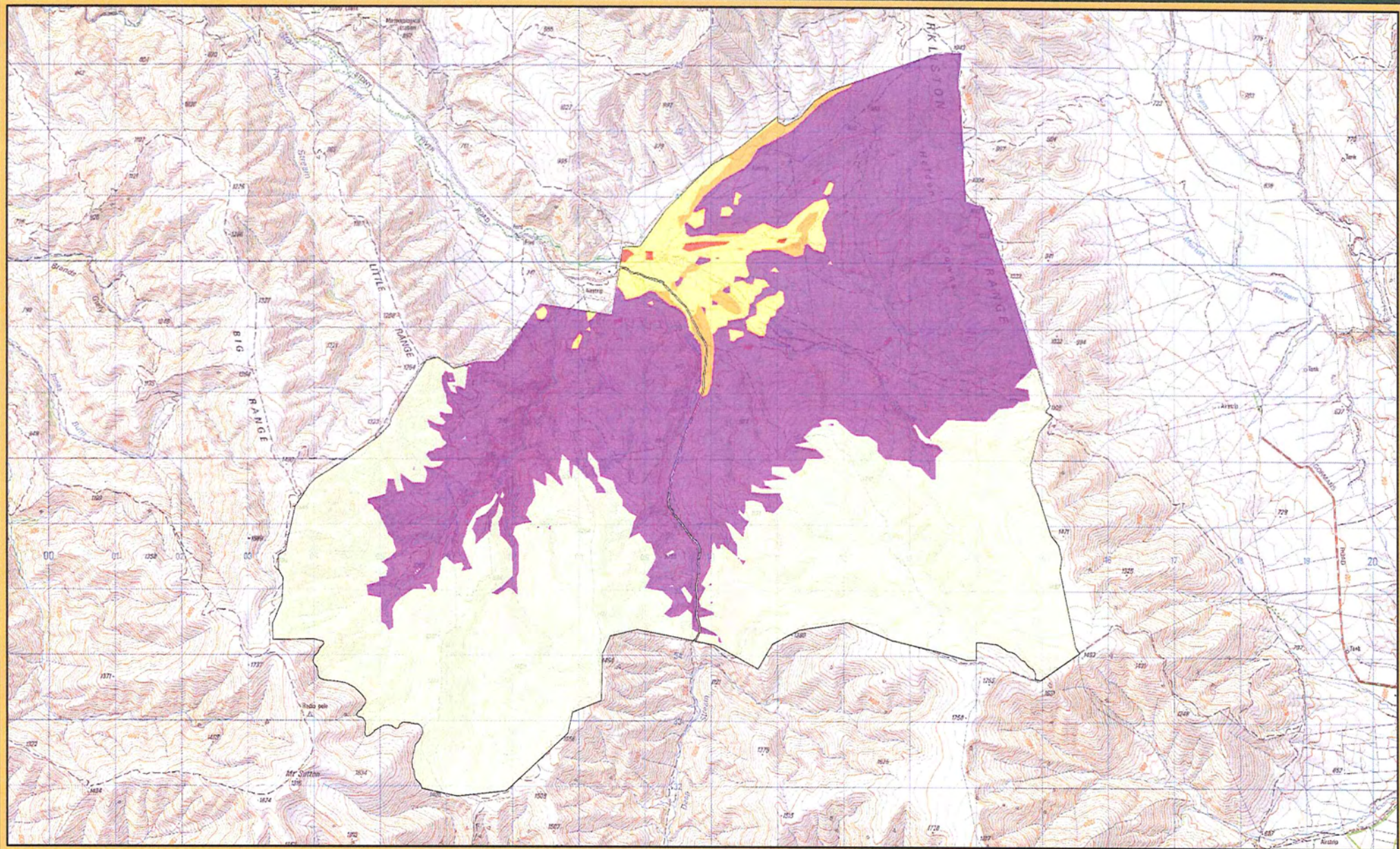
Department of Conservation  
*Te Papa Atawhai*

New Zealand Government


CANTERBURY CONSERVANCY - TENURE REVIEW



- Legend**
- Legal roads
  - Kirkliston boundary
  - Adjoining pastoral leases
  - Existing public conservation land
  - Crown land ex pol
  - Retirement area - under investigation for protection

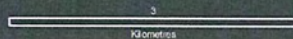


# Kirkliston PL - LENZ Threat


 Department of Conservation  
 Te Papa Atawhai

New Zealand Government

# 2



**LENZ 4 Threat**

|             |                                   |
|-------------|-----------------------------------|
| Red         | Acutely threatened                |
| Orange      | Chronically threatened            |
| Yellow      | At risk                           |
| Purple      | Critically underprotected         |
| Blue        | Underprotected                    |
| Light Green | Less reduced and better protected |

CANTERBURY CONSERVANCY - TENURE REVIEW