

## **Crown Pastoral Land Tenure Review**

**Lease name : LAUDER**

**Lease number : PO 376**

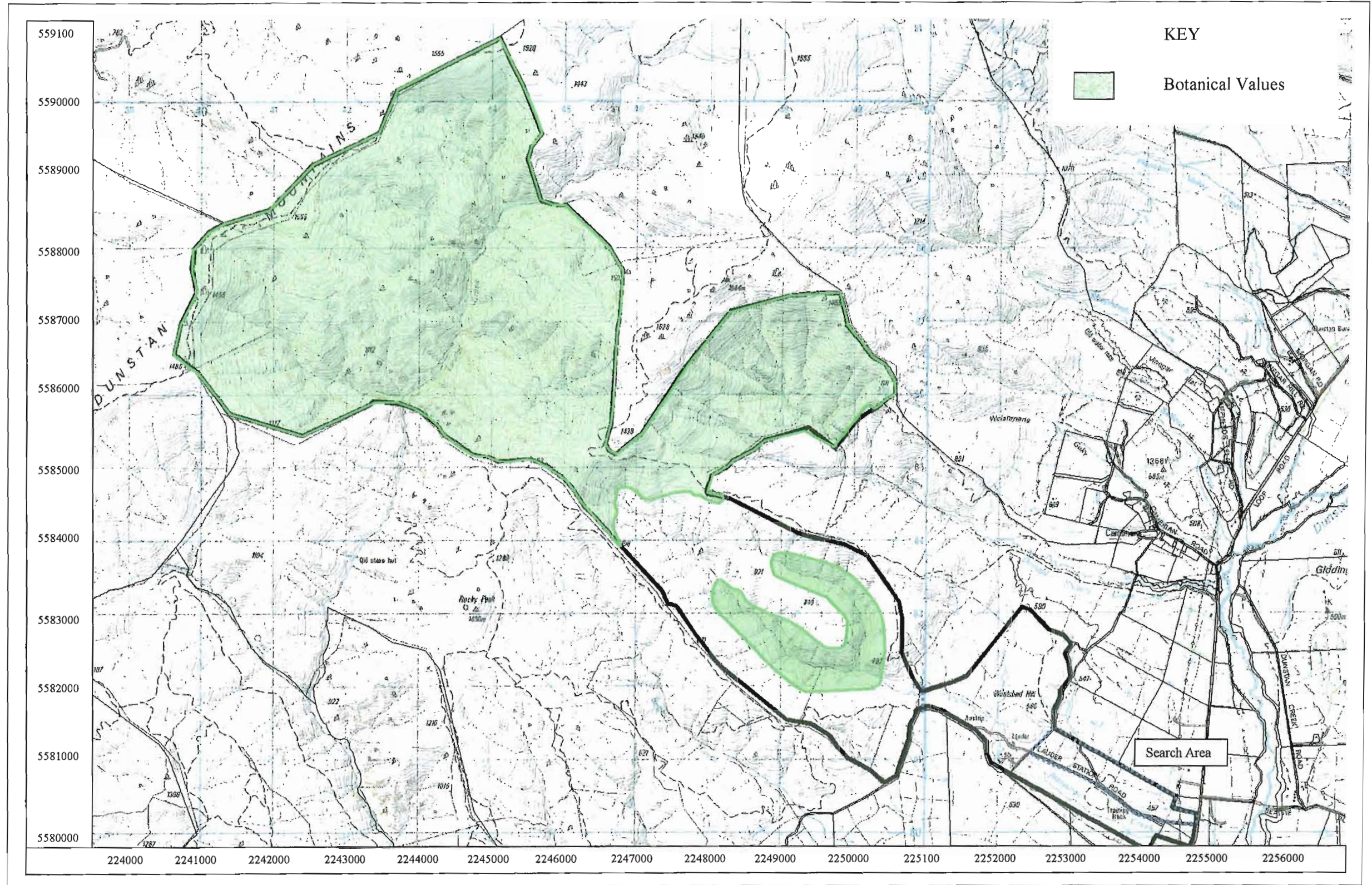
### **Conservation Resources Report - Part 2**

As part of the process of Tenure Review, advice on significant inherent values within the pastoral lease is provided by Department of Conservation officials in the form of a Conservation Resources Report. This report is the result of outdoor survey and inspection. It is a key piece of information for the development of a preliminary consultation document.

Note: Plans which form part of the Conservation Resources Report are published separately.

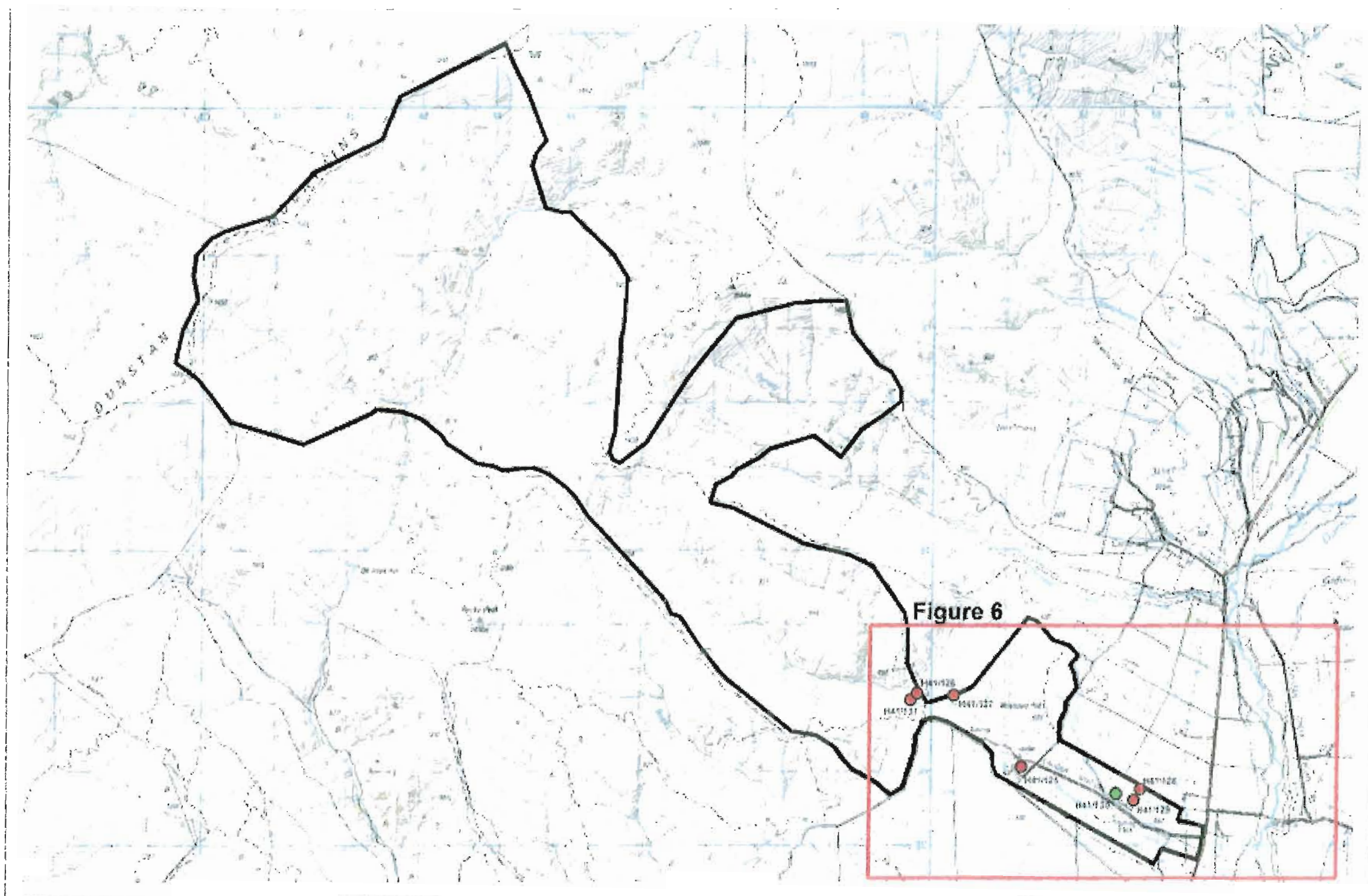
These documents are all released under the Official information Act 1982.

**September 06**



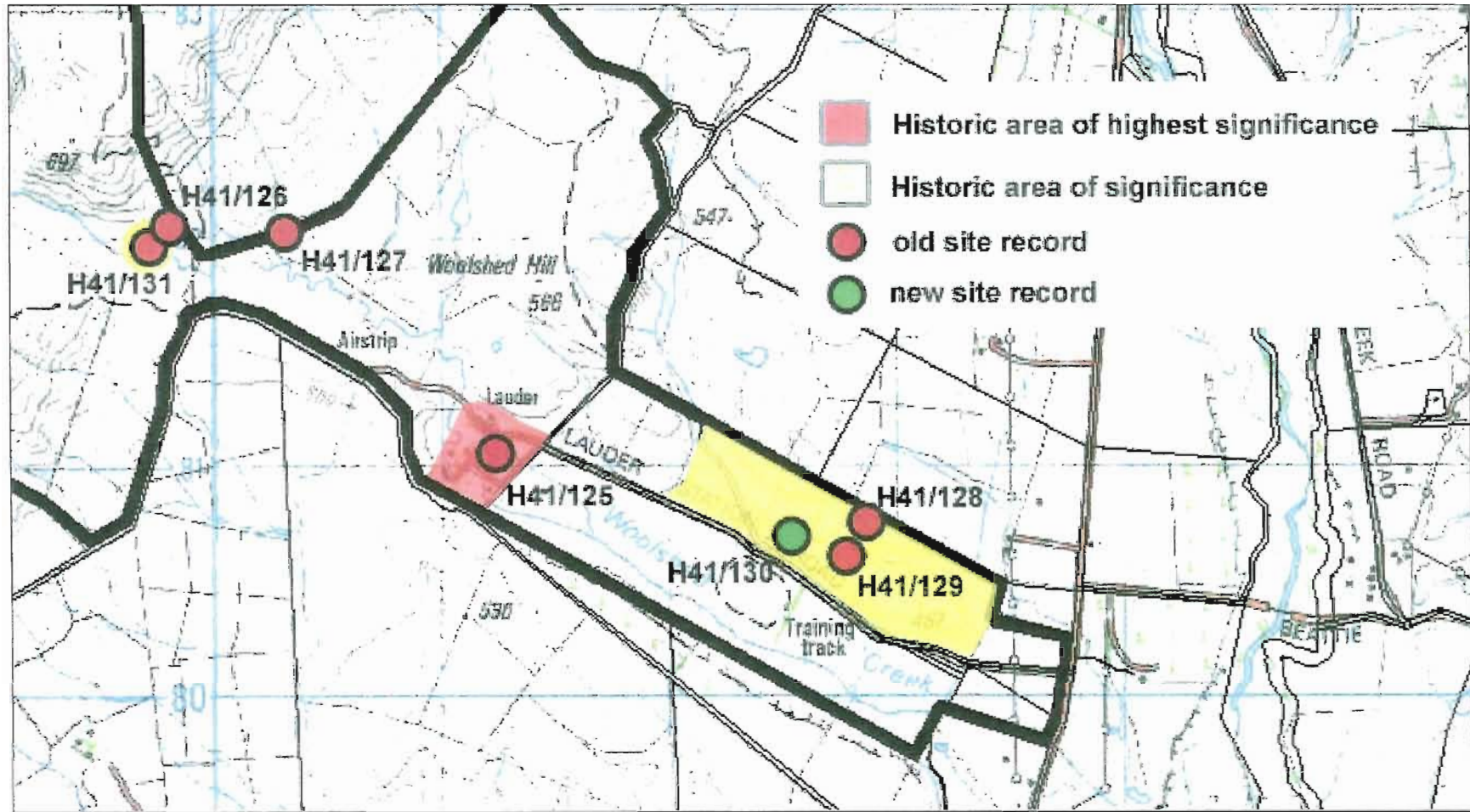
MAP 4.2.5b Lauder Pastoral Lease Botanical Values

0.7 0 0.7 1.4 2.1 Kilometers

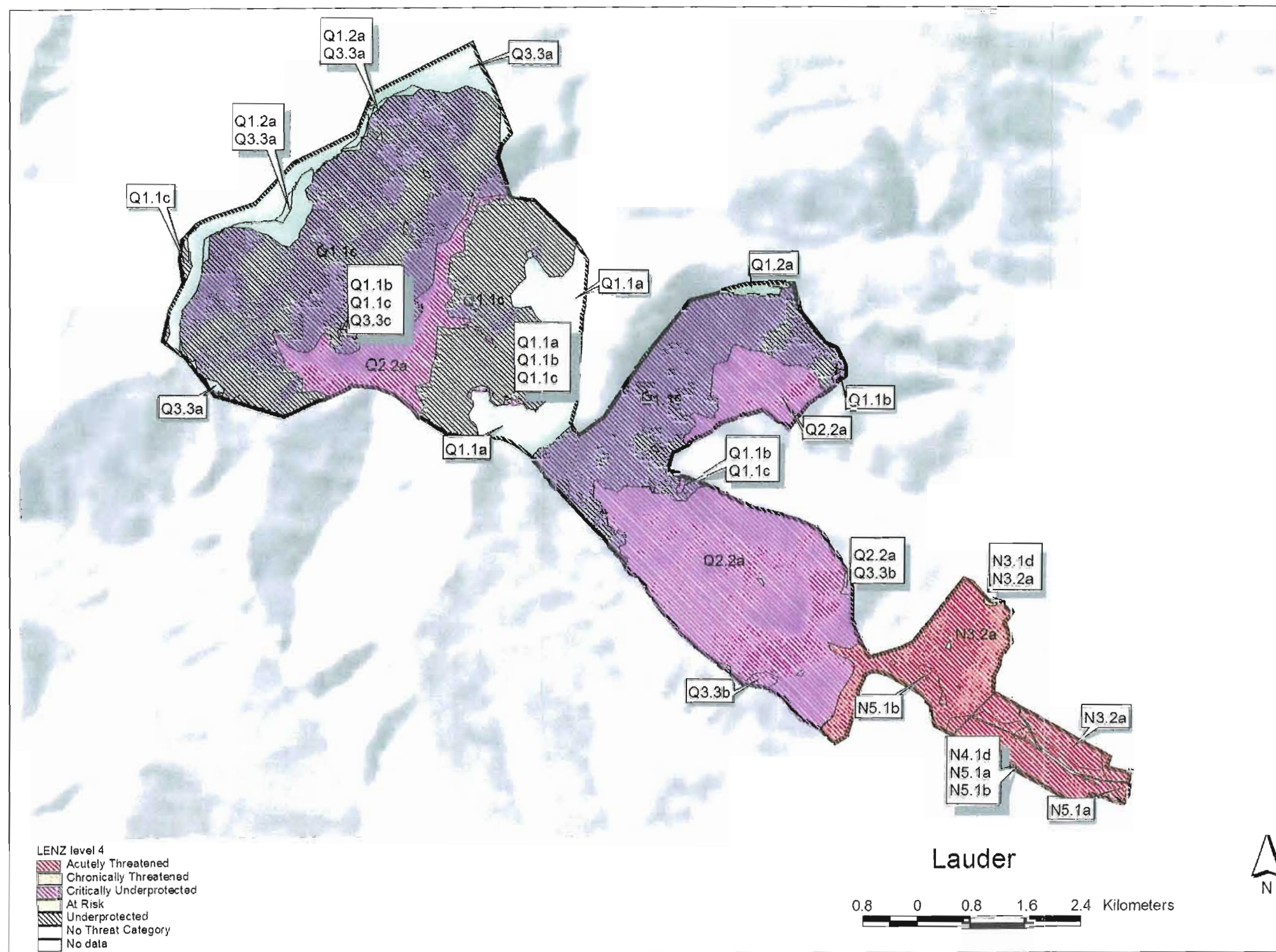


MAP 4.2.6a Lauder Pastoral Lease Historic Sites



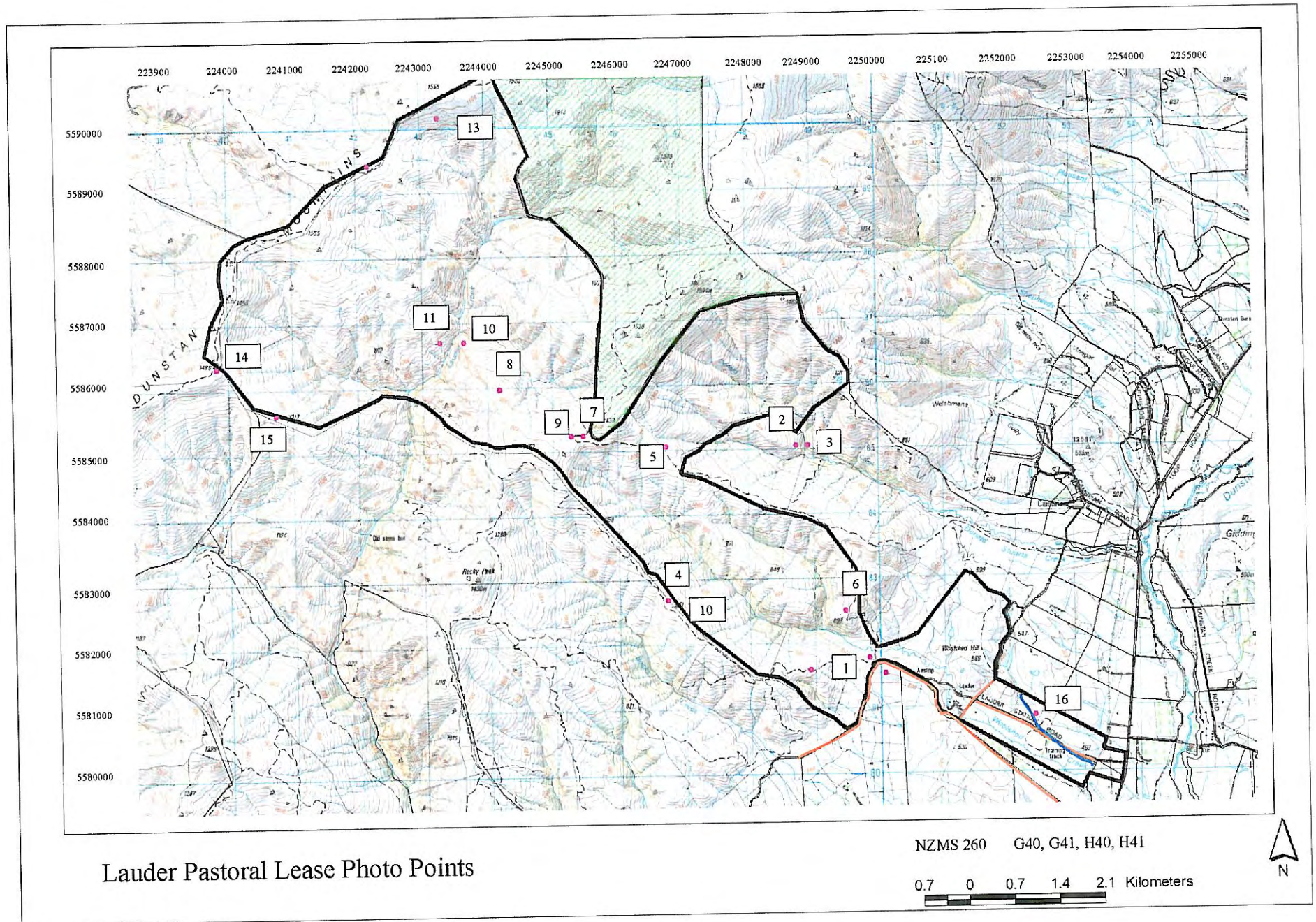


MAP 4.2.6b Lauder Pastoral Lease Areas of Historic Significance



MAP 4.2.7 Lauder Pastoral Lease Land Environments of New Zealand Profile

### **4.3 Photographs**





**Figure 1** Looking into both branches of Woolshed Creek from approximately NZMS 260 G41 GR 499 818. Extensive shrubland is visible in the mainstem and south branch. A narrow spur divides the two gullies.



**Figure 2** Looking from Woolshed Creek headbasin into the south branch of Woolshed Creek from approximately NZMS 260 G41 GR 488 850. North branch is to left of picture. Shrublands are expanding in the Woolshed creek area. Narrow leaved snow tussock (*Chionocloa rigida*) and slim snow tussock (*C. macra*) dominate above 1200 m.