

Crown Pastoral Land Tenure Review

Lease name : LOCH LINNHE

Lease number : PO 230

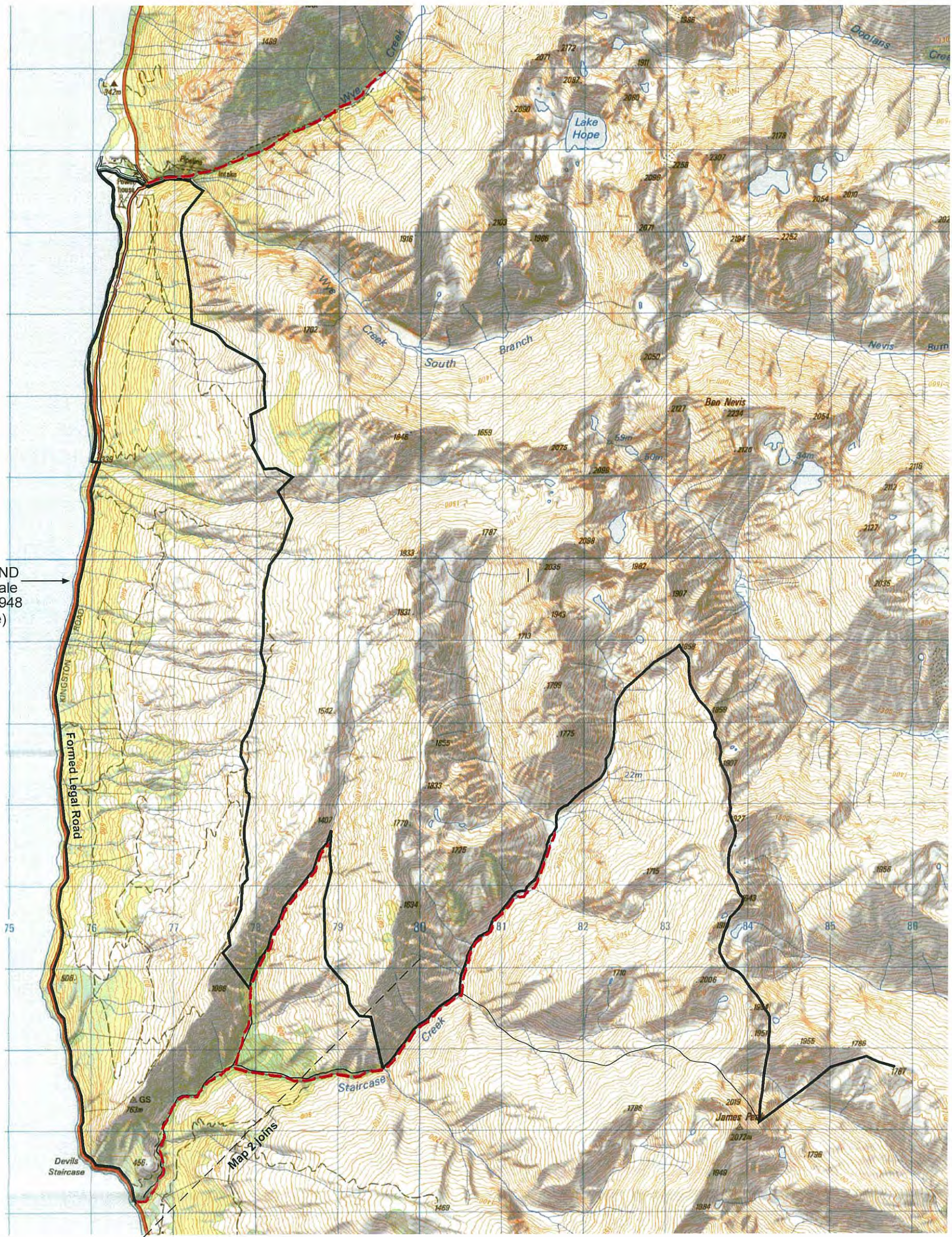
Due Diligence Report - Plans

These plans attach to and support the Due Diligence Report.

They are released under the Official Information Act 1982.

July

07



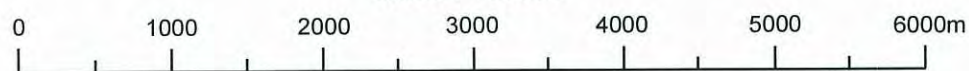
CROWN LAND
Res from Sale
Sec 58 L.A. 1948
(Lake Edge)

— Pastoral Lease Boundary

Marginal Strip Subject to Sec 24 (9)
Conservation Act 1987 - - - - -

Loch Linnhe

Scale 1 : 50000



Version	1	2	3	4	5
Otago Land District	Sheet 1 of 2				
NZMS 260 F.42	Date 09/03/2007				

Graphics by :
TL Survey services Ltd DUNEDIN