

Crown Pastoral Land Tenure Review

Lease name : LOWER CASCADE

Lease number : PH 002

Conservation Resources Report - Part 5

As part of the process of Tenure Review, advice on significant inherent values within the pastoral lease is provided by Department of Conservation officials in the form of a Conservation Resources Report. This report is the result of outdoor survey and inspection. It is a key piece of information for the development of a preliminary consultation document.

Note: Plans which form part of the Conservation Resources Report are published separately.

These documents are all released under the Official information Act 1982.

July 05

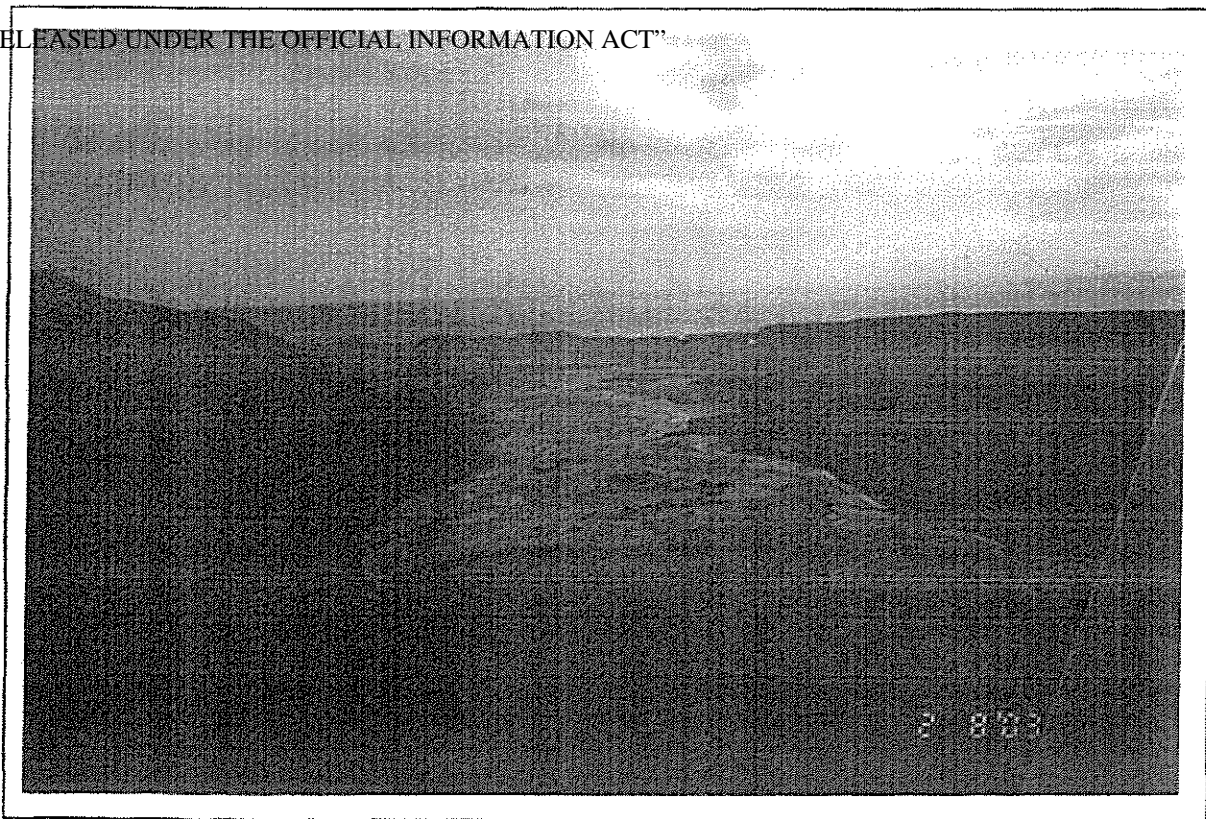


Fig. 1 Lower Cascade pastoral lease is one of only two such leases in Westland and both are situated deep within the Te Wahi Pounamu World Heritage Area, in the Cascade valley. The leasehold land is bounded by the Cascade river to the north and stretches from about 5km inland from the mouth of the river to the boundary with the Upper Cascade pastoral lease, some 10km inland from the river mouth near Cascade Point.

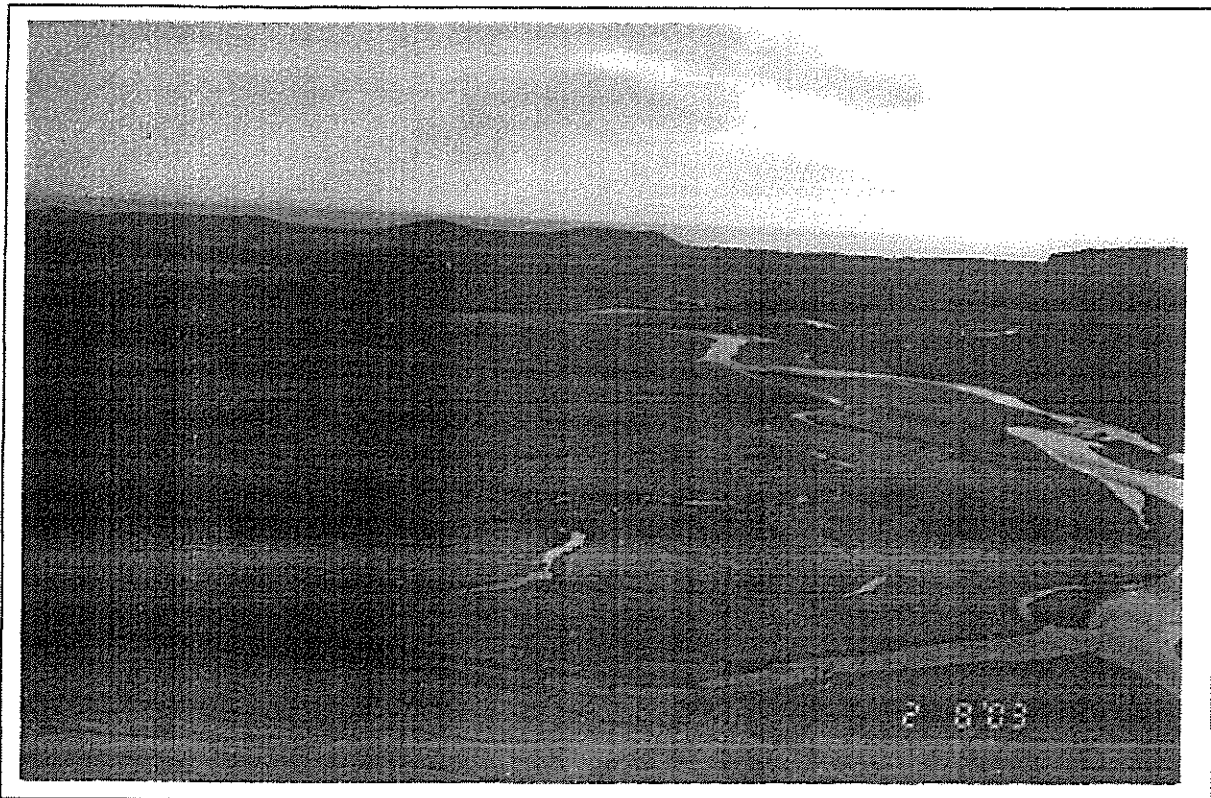


Fig. 2 The leasehold land is almost entirely confined to low-lying river flats which are all less than 100m above sea level. Consequently much of the property is poorly drained, subject to flooding and marginal for farming. Situated as it is within the World Heritage area it would be better returned to full Crown ownership to be managed for conservation and recreation purposes.

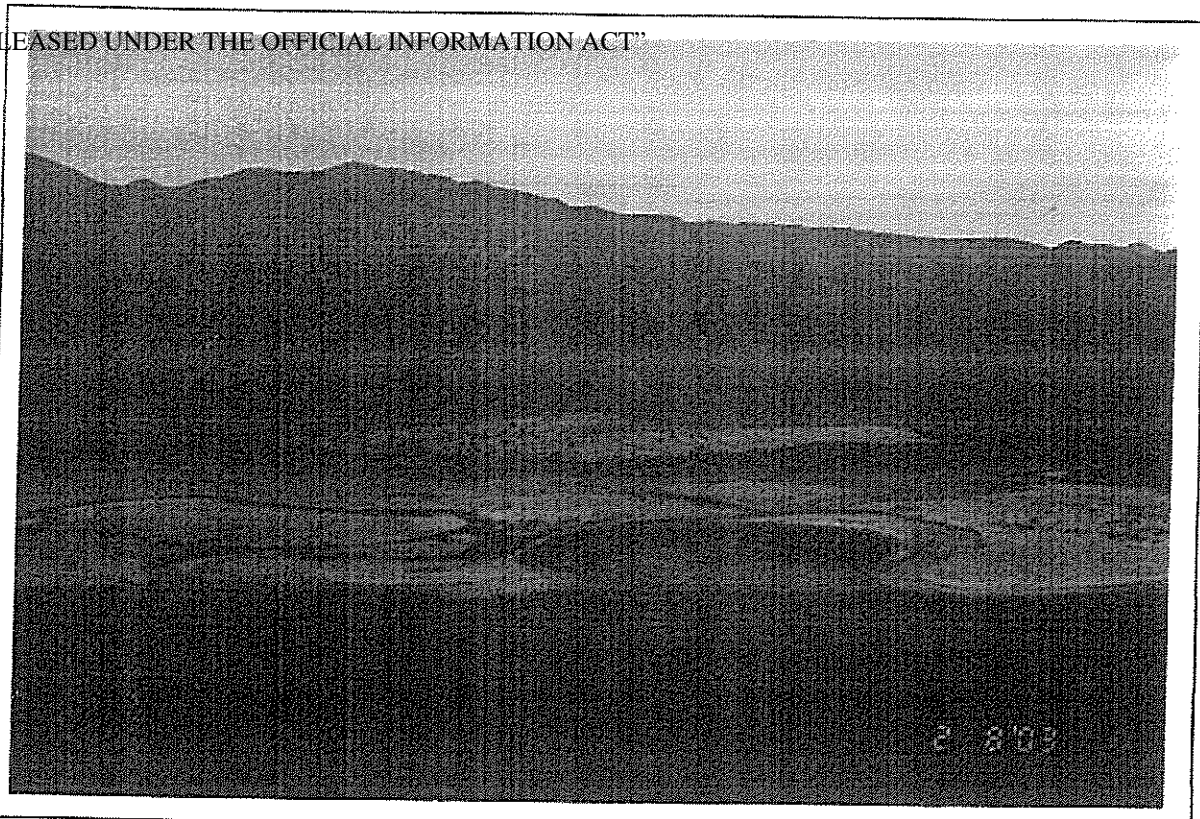


Fig. 3 The Cascade River forms the northern boundary while the Barn Bay - Cascade Road follows the southern boundary along the foot of the range which includes Mt Eggeling. This range is part of the World Heritage area and is clothed in native Beech-Podocarp forest. The tortuous meanders in this reach of the river are themselves spectacular geological features, totally different from the braided rivers of the east.

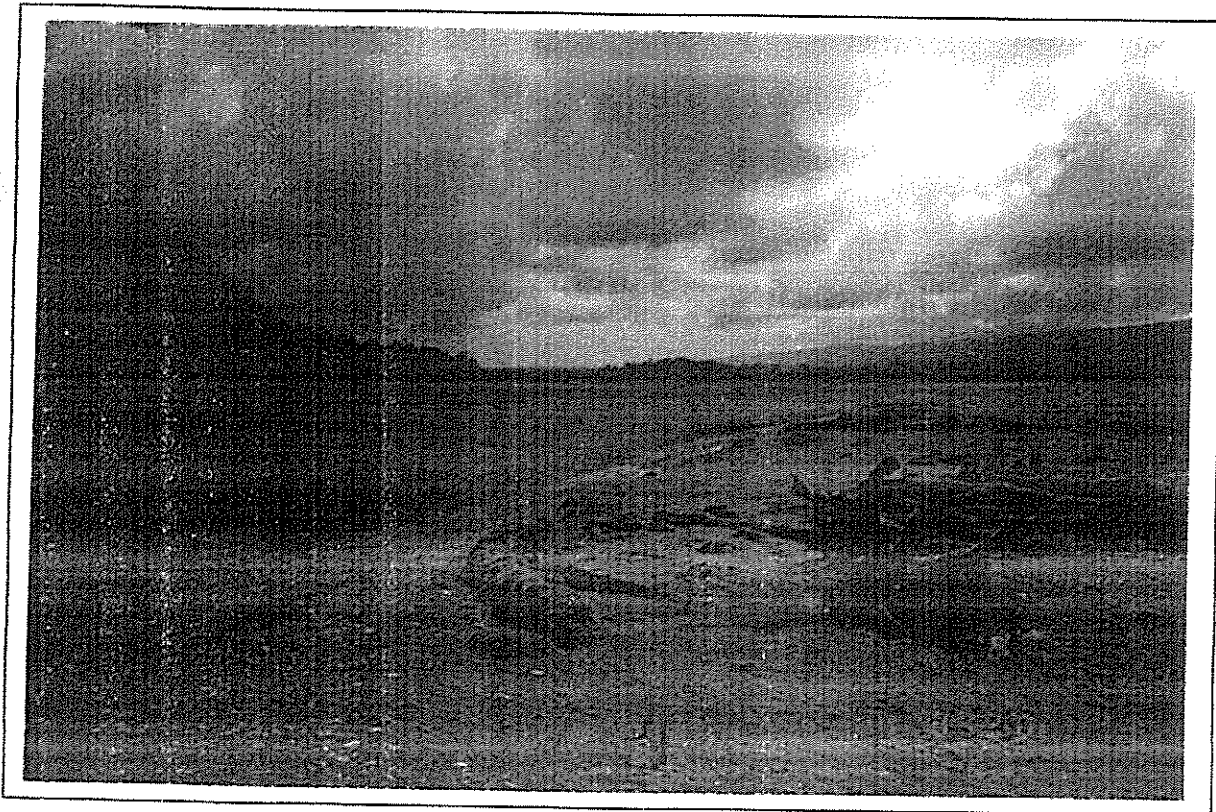


Fig. 4 The Barn Bay - Cascade road provides important recreational access to the west coast at Barn Bay. It is frequently subject to severe flooding as can be seen by the massive size of the driftwood in this picture. Although this access is important, it is not always available as a major ford over the Cascade River has to be crossed just upstream of the eastern boundary of Lower Cascade.

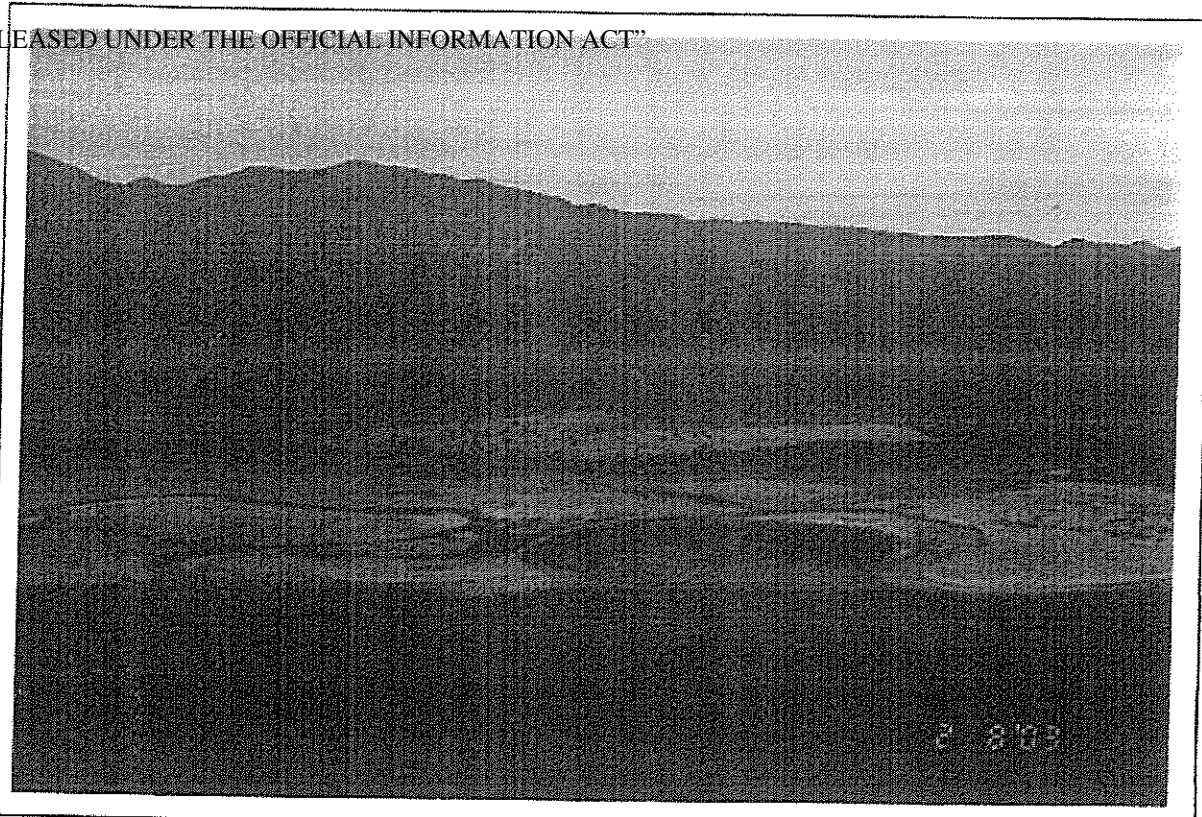


Fig. 3 The Cascade River forms the northern boundary while the Barn Bay - Cascade Road follows the southern boundary along the foot of the range which includes Mt Eggeing. This range is part of the World Heritage area and is clothed in native Beech-Podocarp forest. The tortuous meanders in this reach of the river are themselves spectacular geological features, totally different from the braided rivers of the east.

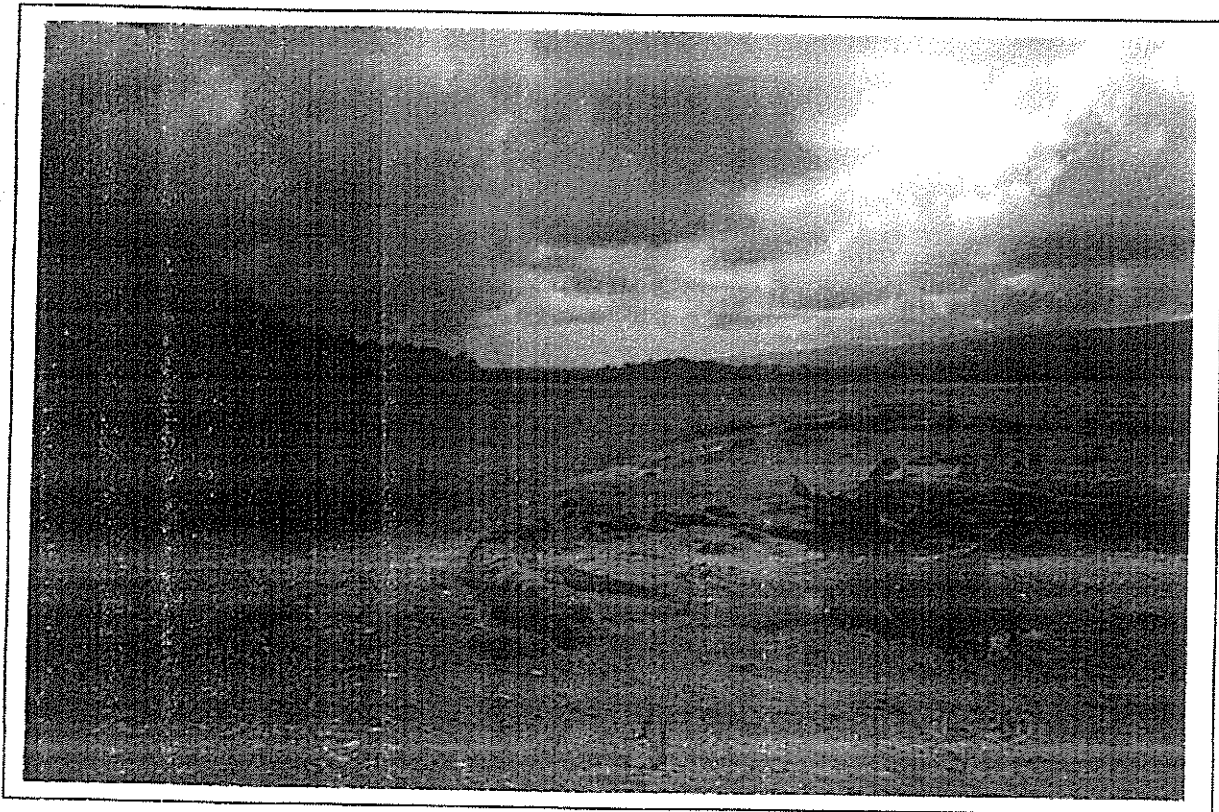


Fig. 4 The Barn Bay - Cascade road provides important recreational access to the west coast at Barn Bay. It is frequently subject to severe flooding as can be seen by the massive size of the driftwood in this picture. Although this access is important, it is not always available as a major ford over the Cascade River has to be crossed just upstream of the eastern boundary of Lower Cascade.