

Crown Pastoral Land Tenure Review

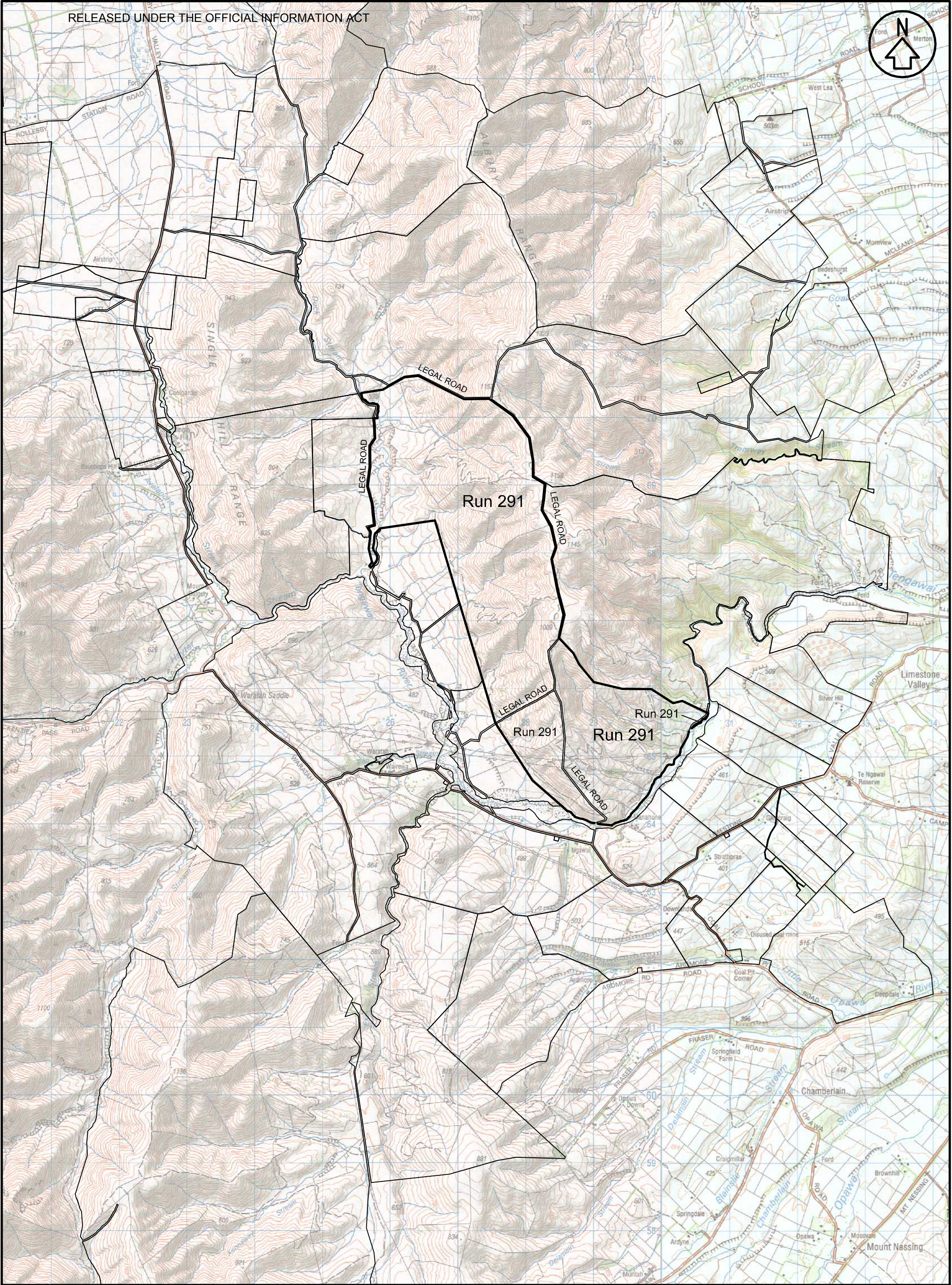
Lease name : MANAHUNE


Lease number : PT 091

Land Status Report - Plans

These plans attach to and support the Due Diligence Report.

They are released under the Official Information Act 1982.



<div><div>btw south</div><div><div>surveyors</div><div>planners</div><div>engineers</div><div>land & g-i-s services</div></div><div><div>Unit 7, Cromtrade, 21 McNulty Road</div><div>P.O. Box 302, CROMWELL 9342</div><div>Ph (03) 445 0782 Fax (03) 445 0194</div><div>Web: www.btw.co.nz</div></div></div> <div></div>	GENERAL NOTES					TITLE			
	1. Coordinates in terms of: New Zealand Map Grid, Geodetic Datum 1949.					MANAHUNE			
	2. Sources: LINZ Topographic NZMS 260 LINZ Cadastral Data 2009					Run Name: Manahune			
						Lease Registration Reference: PT 091			
						Land District: Canterbury			
DRAWING No S09044_2_1_A					SHEET OF		1 0 km 1 2 SCALE 1:50000		ORIGINAL SIZE A3
REVISIONS					Excludes all legal roads and Marginal strips if any.				