

## **Crown Pastoral Land Tenure Review**

**Lease name : MARYBURN**

**Lease number : PT 041**

## **Preliminary Proposal Designations Plan**

The attached plan is a copy of the Designations Plan included in the Preliminary Proposal for the above review.

The report attached is released under the Official Information Act 1982.

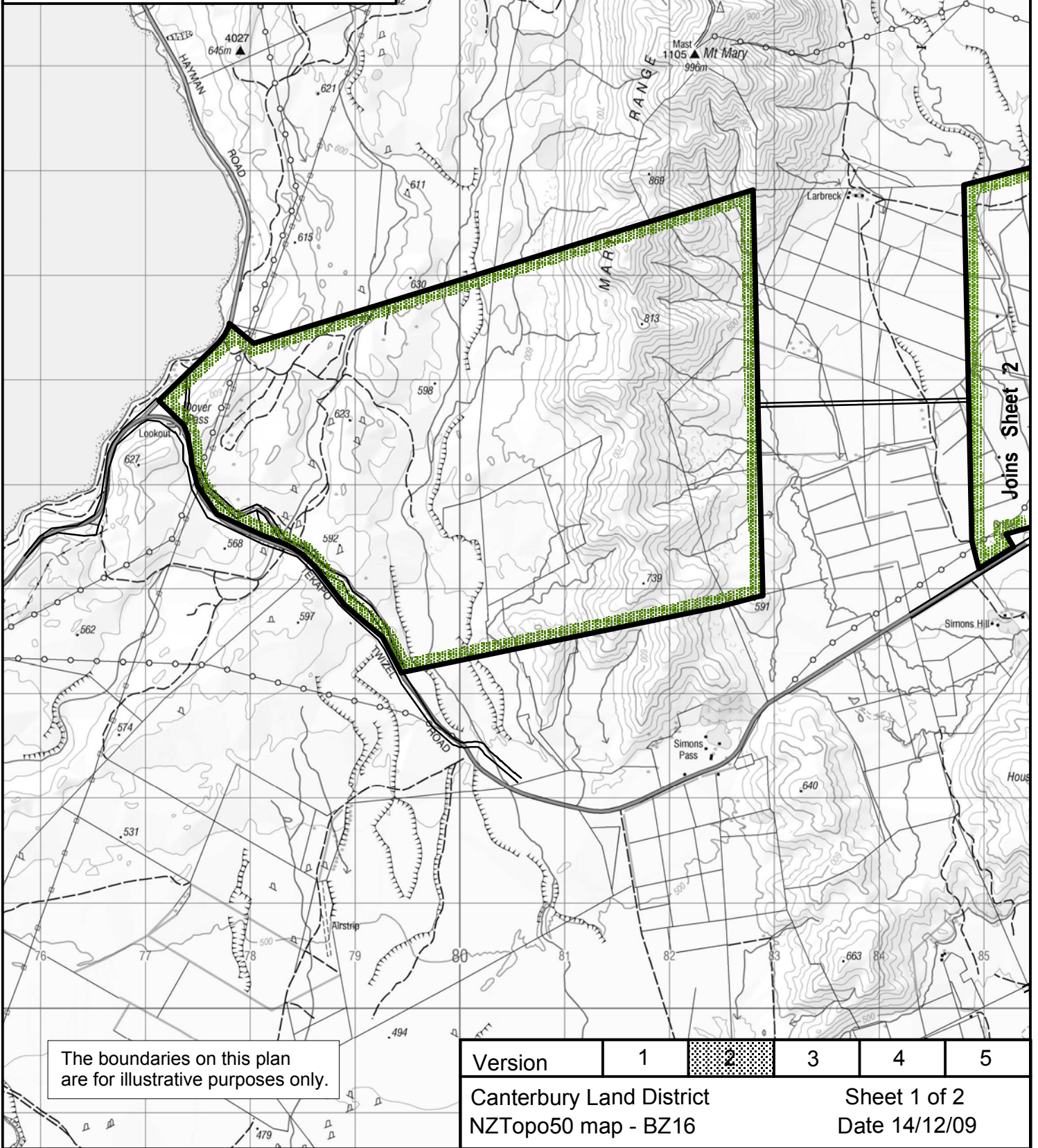
**December**

**10**

**Pt 041 MARYBURN TENURE REVIEW  
PROPOSED DESIGNATIONS**



Pastoral lease land to be disposed of by freehold disposal to Classic Properties Limited.



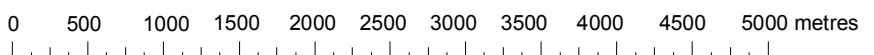
The boundaries on this plan are for illustrative purposes only.

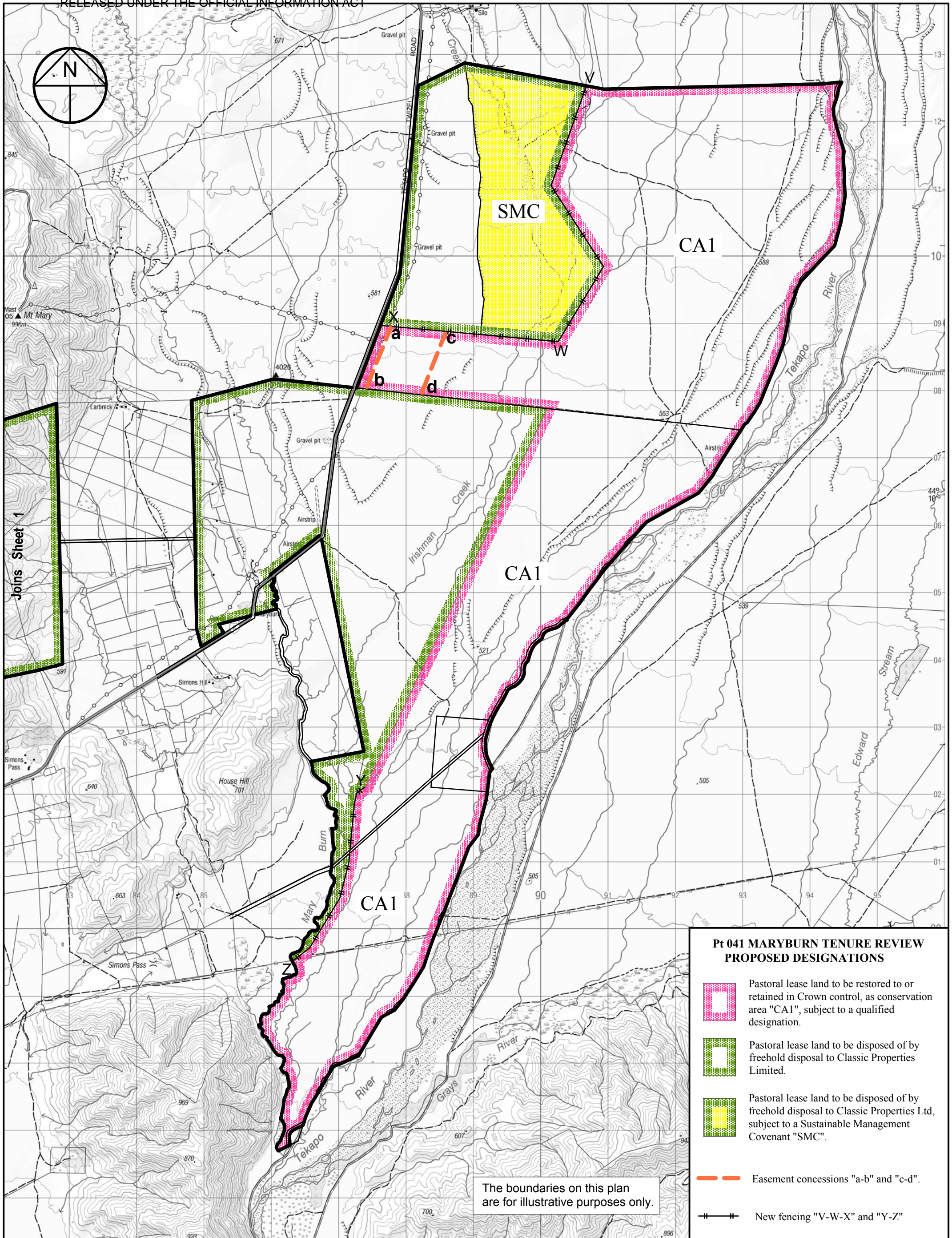
Version	1	2	3	4	5
Canterbury Land District NZTopo50 map - BZ16			Sheet 1 of 2 Date 14/12/09		



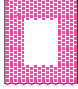

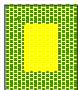

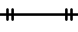
**Maryburn**

Scale 1:50000 (@ A4)





**Pt 041 MARYBURN TENURE REVIEW  
PROPOSED DESIGNATIONS**

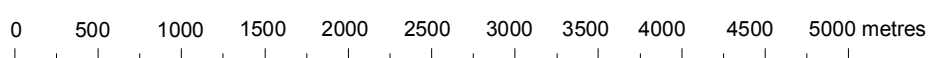
-  Pastoral lease land to be restored to or retained in Crown control, as conservation area "CA1", subject to a qualified designation.
-  Pastoral lease land to be disposed of by freehold disposal to Classic Properties Limited.
-  Pastoral lease land to be disposed of by freehold disposal to Classic Properties Ltd, subject to a Sustainable Management Covenant "SMC".
-  Easement concessions "a-b" and "c-d".
-  New fencing "V-W-X" and "Y-Z"

The boundaries on this plan are for illustrative purposes only.



**Maryburn**

Scale 1:50000 (@ A3)



Version	1	2	3	4	5
Canterbury Land District	Sheet 2 of 2				
NZTopo50 map - BZ16	Date 14/12/09				