

Crown Pastoral Land Tenure Review

Lease name : MORVEN HILLS

Lease number : PO 359

Conservation Resources Report – Part 2

As part of the process of Tenure Review, advice on significant inherent values within the pastoral lease is provided by Department of Conservation officials in the form of a Conservation Resources Report. This report is the result of outdoor survey and inspection. It is a key piece of information for the development of a preliminary consultation document.

The report attached is released under the Official Information Act 1982.

4.2 MAPS

4.2.1 Topographical and Cadastral Boundaries

4.2.2 Landscape Units and Landscape Values

4.2.3 Vegetation and Invertebrate Values

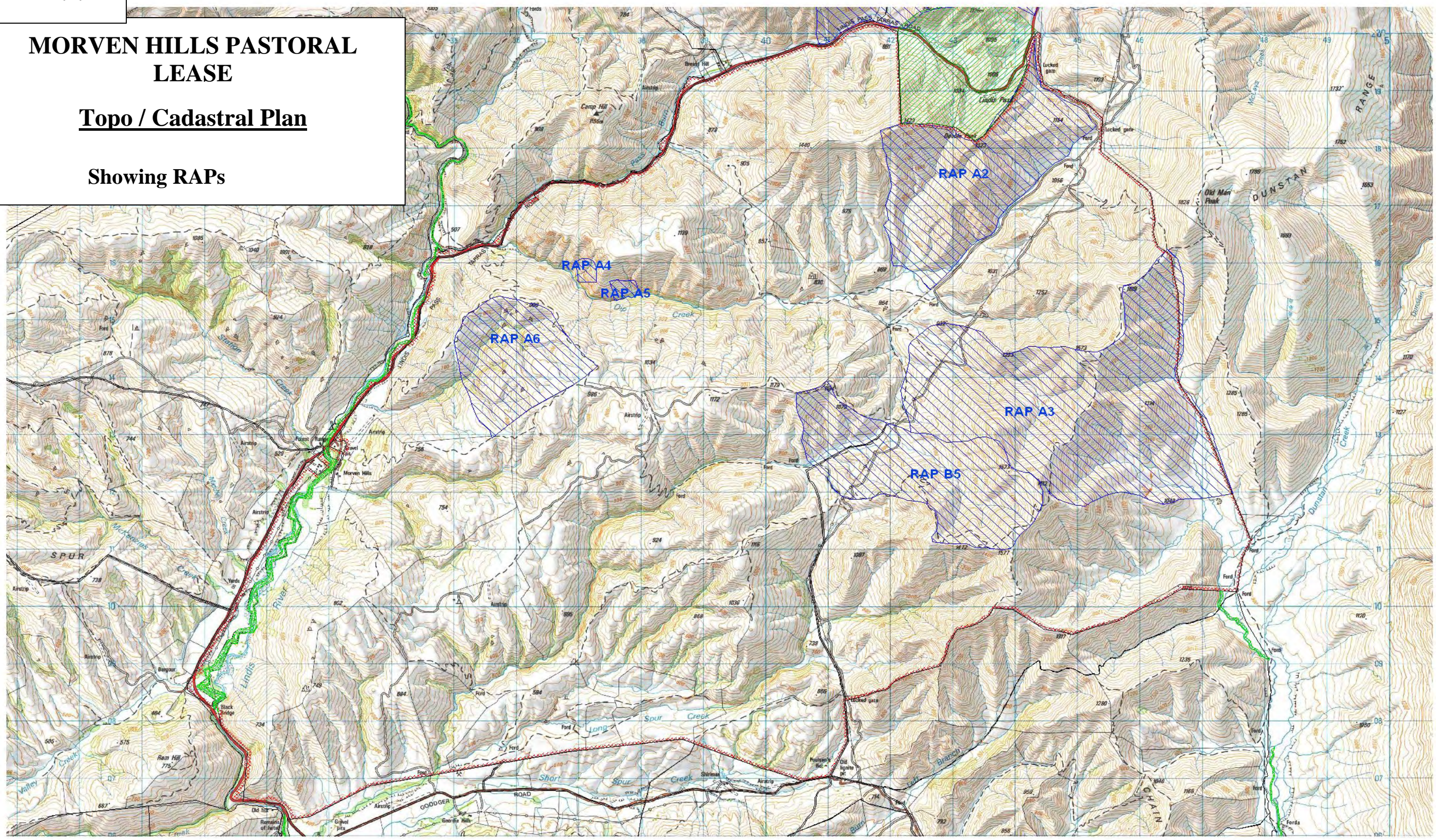
4.2.4 Lizard, Fish and Historic Values

4.2.5 LENZ level 4 plan

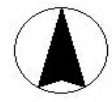
MORVEN HILLS PASTORAL LEASE

Topo / Cadastral Plan

Showing RAPs



Marginal strips
Public Conservation Estate
RAPs



PLAN 4.2.2

**MORVEN HILLS
PASTORAL LEASE**

Landscape Units & Values



Category 1



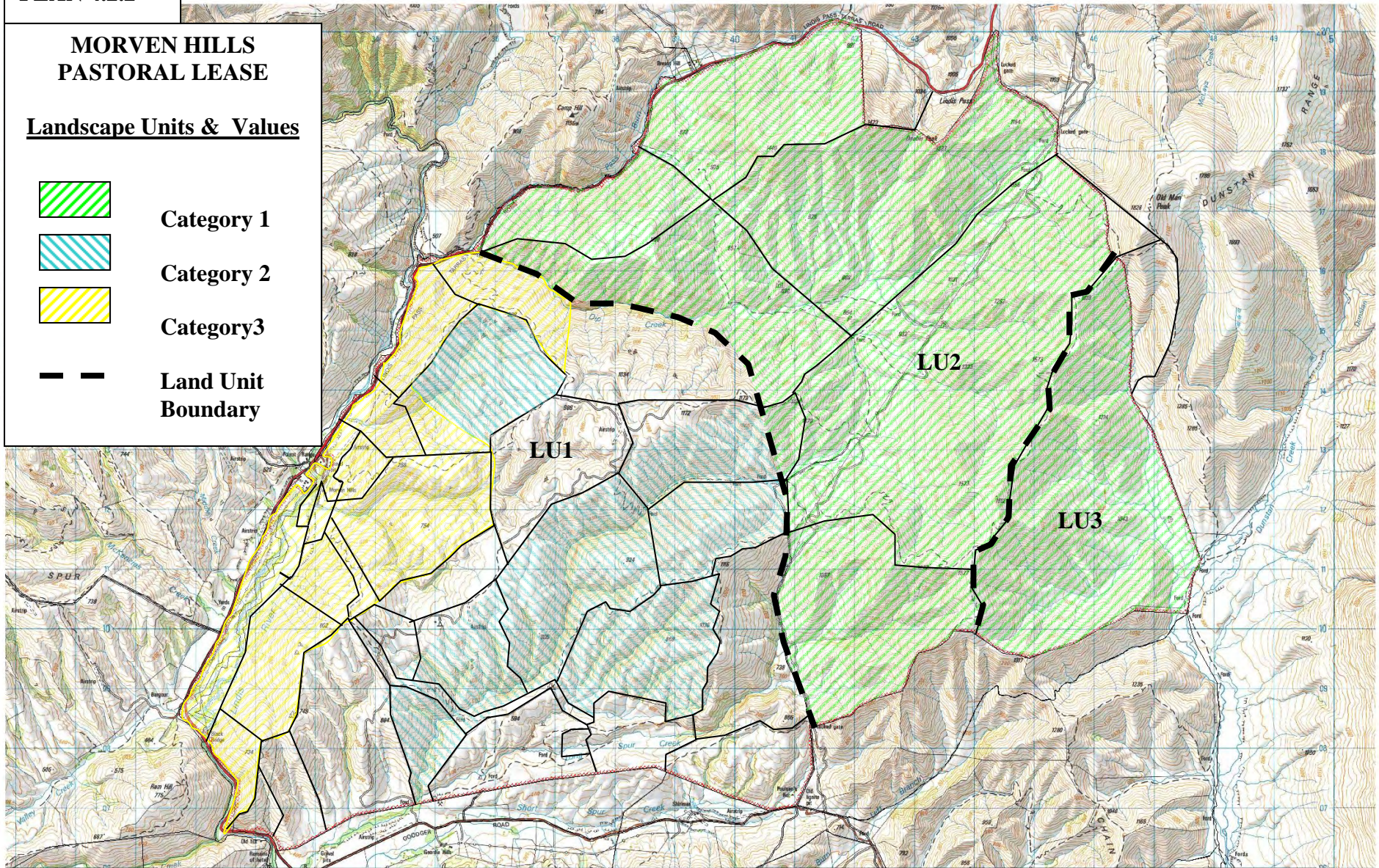
Category 2



Category 3



**Land Unit
Boundary**



MAP 4.2.3

**MORVEN HILLS PASTORAL
LEASE**

Vegetation/Invertebrate Values

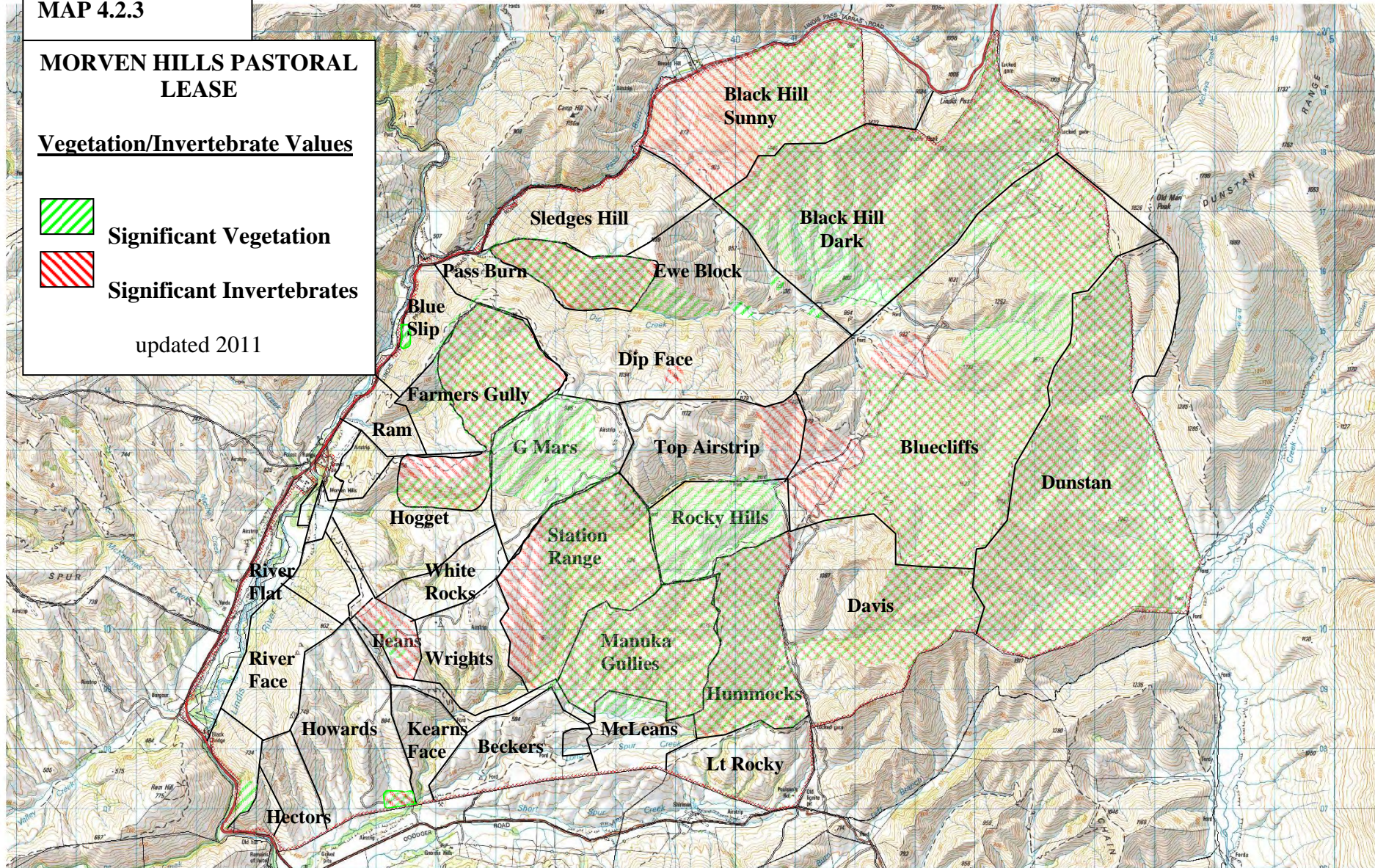


Significant Vegetation



Significant Invertebrates

updated 2011



MAP 4.2.4

MORVEN HILLS PASTORAL LEASE

Lizard/Fish/Historic Values



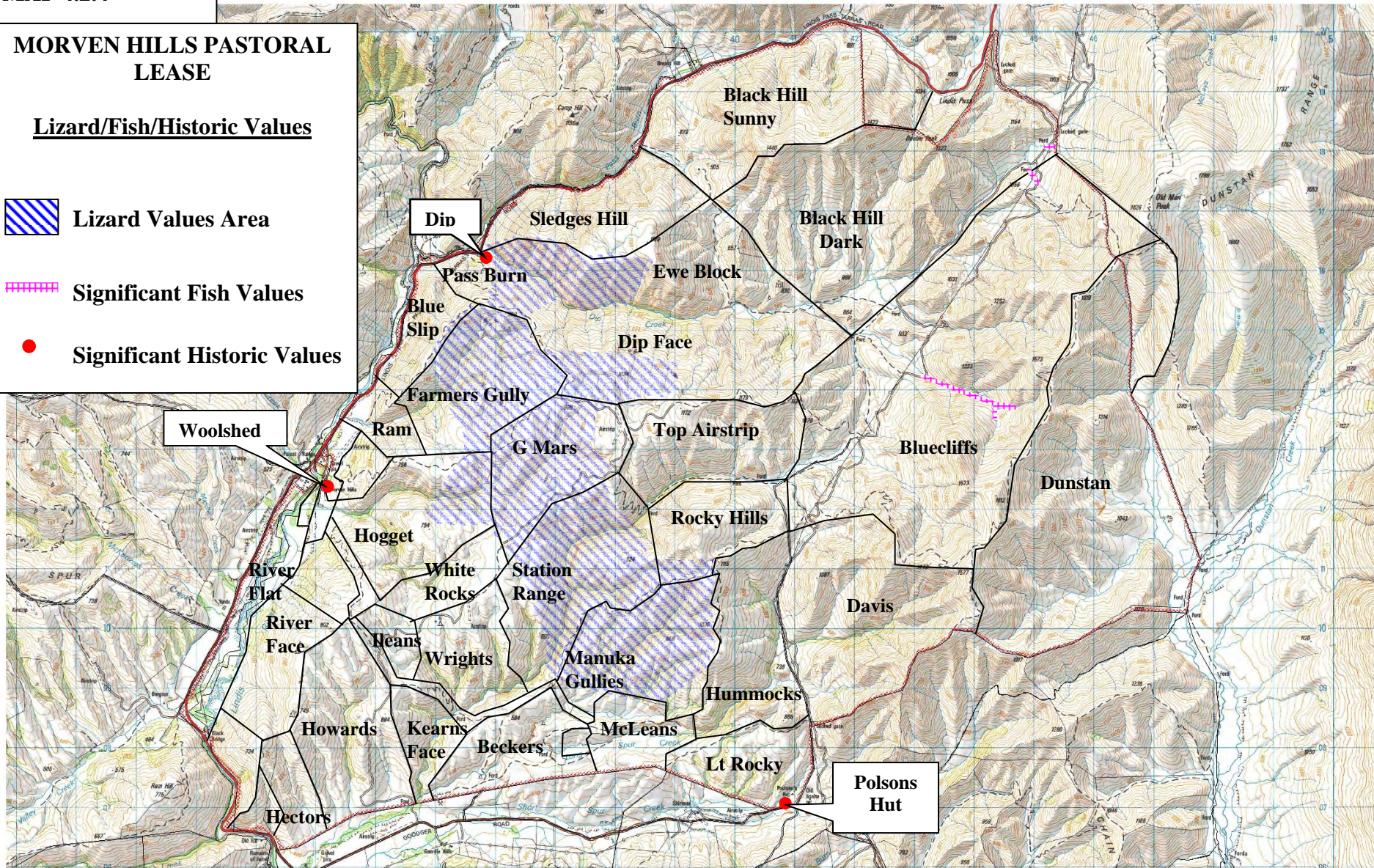
Lizard Values Area



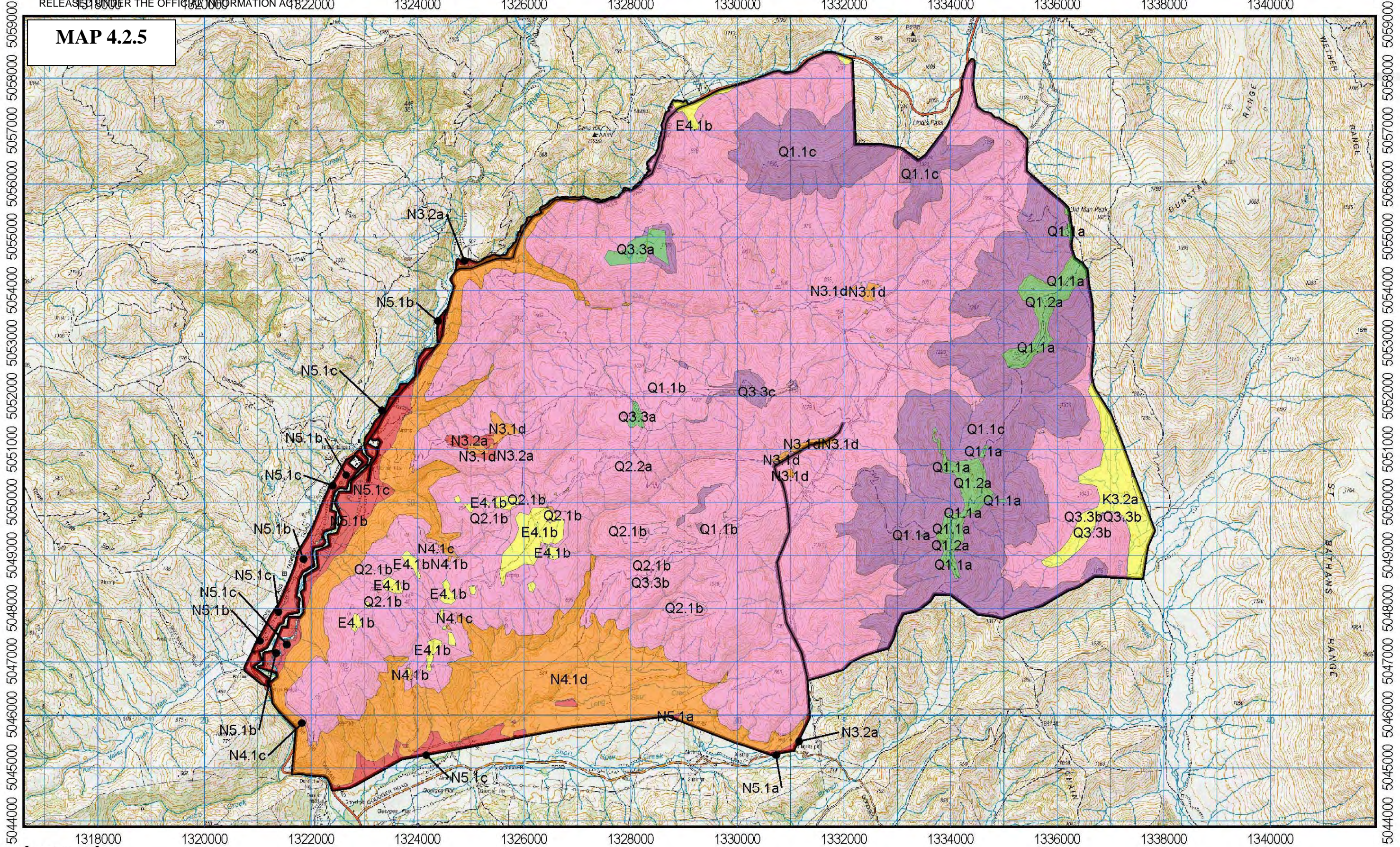
Significant Fish Values



Significant Historic Values



MAP 4.2.5



Legend

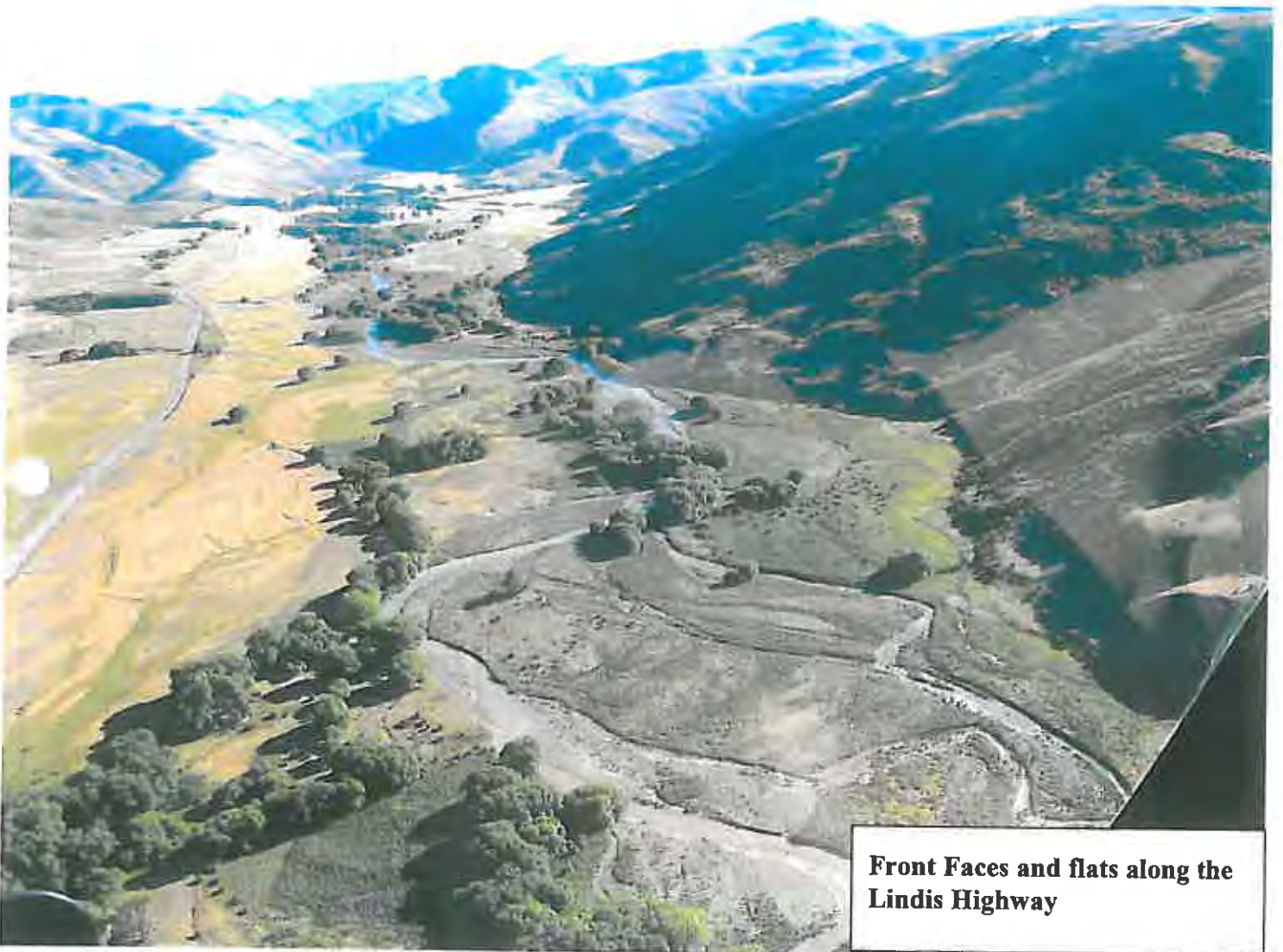
- Acutely Threatened
- At Risk
- Chronically Threatened
- Critically Underprotected
- No Threat Category
- Underprotected



Morven Hills Pastoral Lease

4.3 PHOTOGRAPHS

Morven Hills Photos



Front Faces and flats along the Lindis Highway



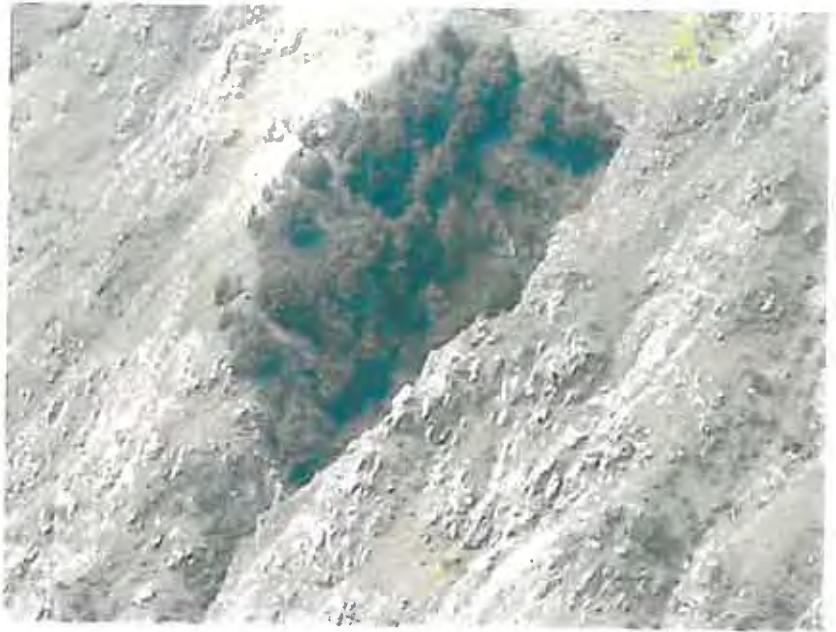
Rounded low hills to the southwest



Grey Shrubland and rock faces are typical of the valleys through the centre of the property: Farmers Gully, G Mars, Station Range, Rocky Hills, Manuka Gullies, Hummocks and Davis Blocks.



RAP A4: Beech Forest Remnants



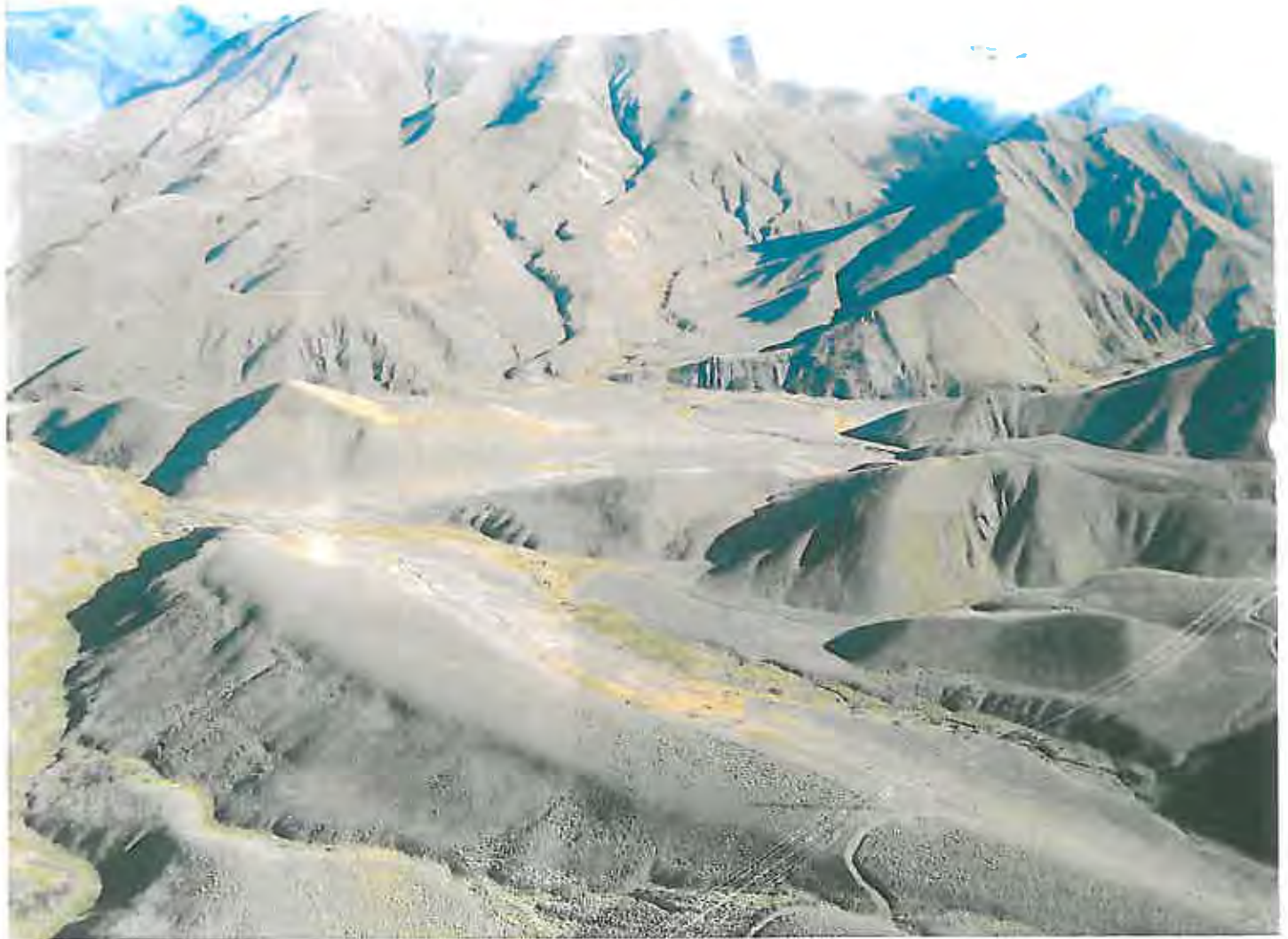
Dip Face, showing RAP A4 and A5.

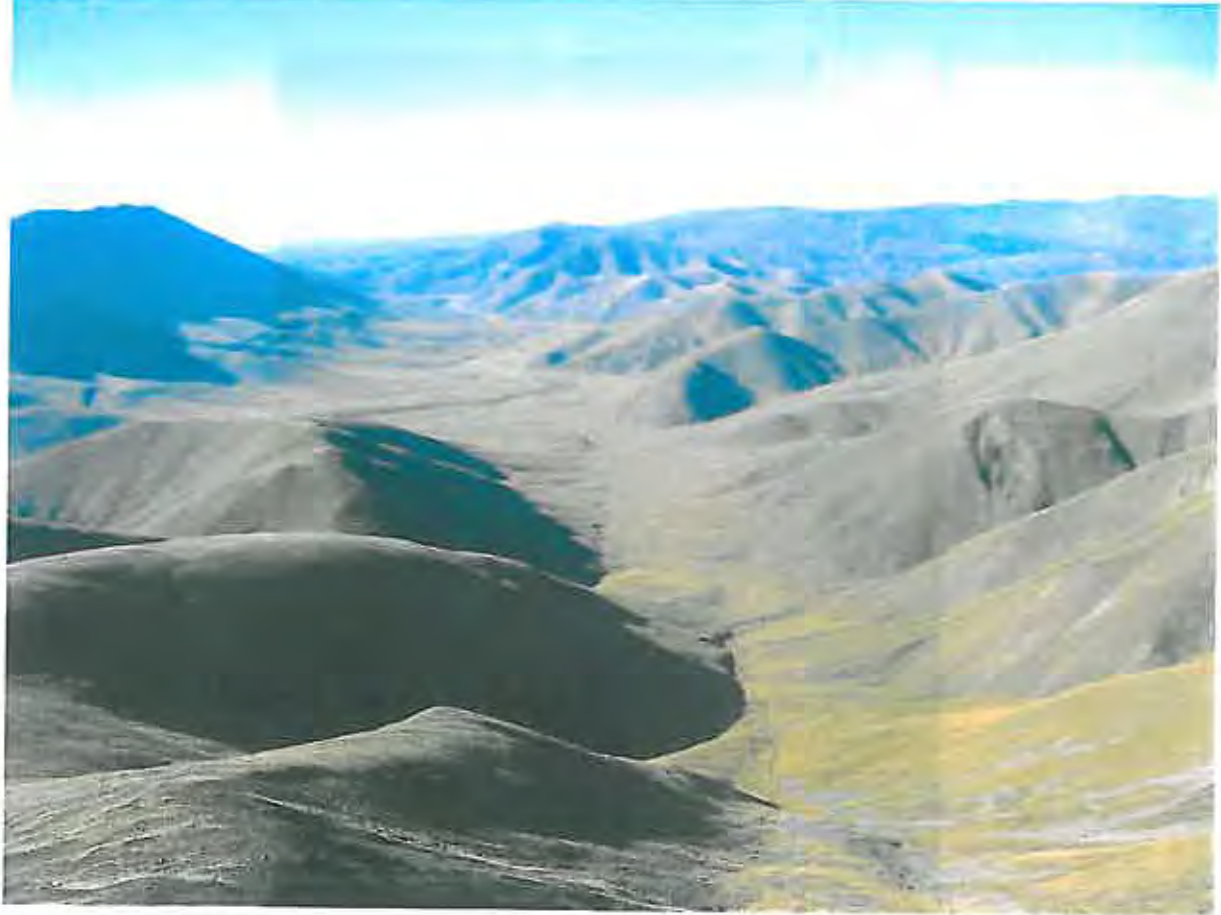


RAP A5: Halls Totara Remnants



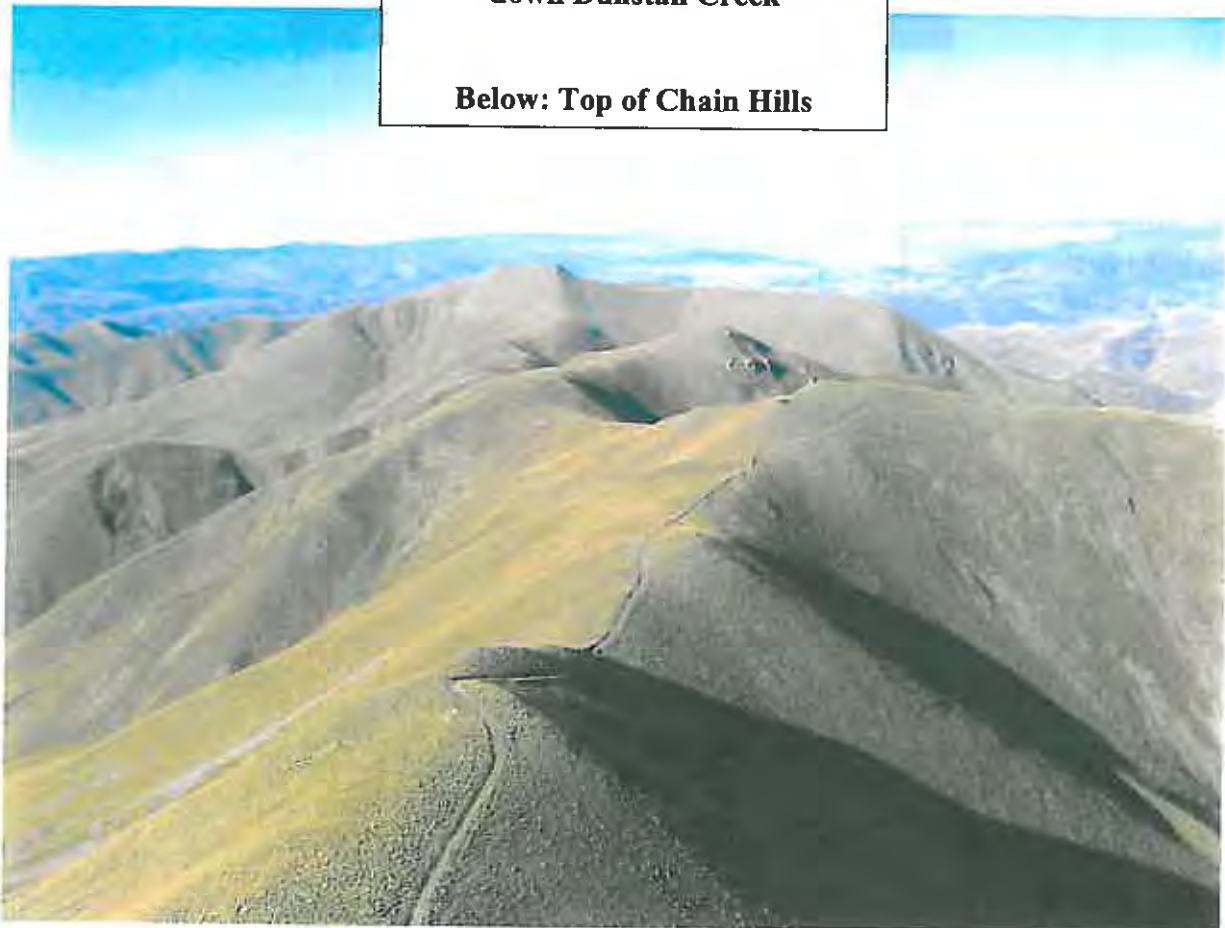
**Pylon Road through centre
of Morven Hills**





**Above: Dunstan Block looking
down Dunstan Creek**

Below: Top of Chain Hills



A very large
Olearia fimbriata
– a rare tree
classified as
'Nationally
Vulnerable'



Polson's Hut.
This hut was where
premature twins died
when born in the cold of
winter

