

## **Crown Pastoral Land Tenure Review**

**Lease name : Mt ASPIRING STATION**

**Lease number : PO 231**

### **Conservation Resources Report - Part 4**

As part of the process of Tenure Review, advice on significant inherent values within the pastoral lease is provided by Department of Conservation officials in the form of a Conservation Resources Report. This report is the result of outdoor survey and inspection. It is a key piece of information for the development of a preliminary consultation document.

Note: Plans which form part of the Conservation Resources Report are published separately.

These documents are all released under the Official information Act 1982.

**November 05**

**4.2 Illustrative Maps**

**4.2.1 Topo/Cadastral**

**4.2.2 Values - Landscape Units and Landscape values**

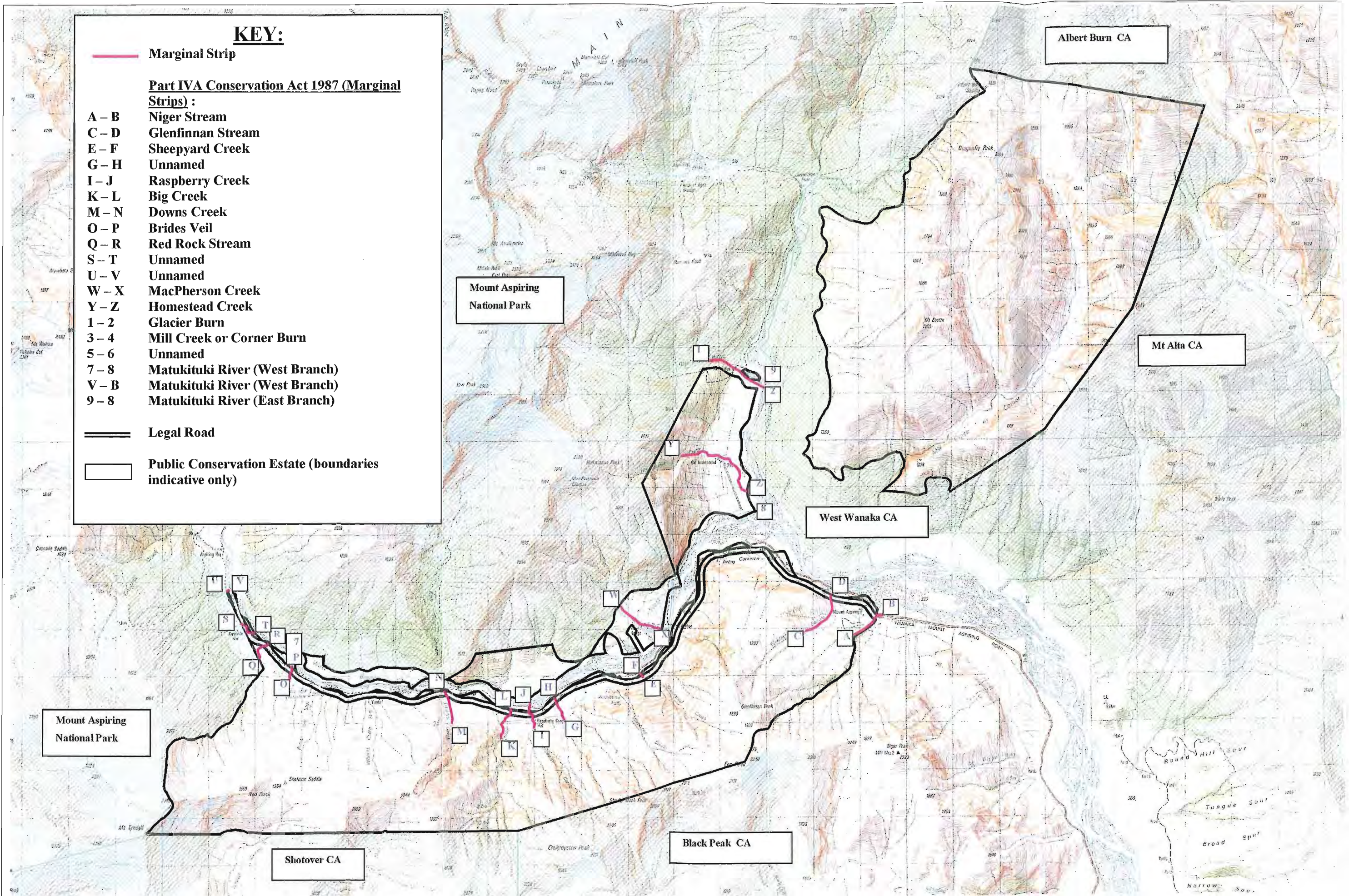
**4.2.3 Values - Ecological**

**4.2.4 Values - Recreation**



# MAP 4.2.1: TOPO/CADASTRAL - MOUNT ASPIRING PASTORAL LEASE

RELEASED UNDER THE OFFICIAL INFORMATION ACT





**MAP 4.2.2: SIGNIFICANT INHERENT LANDSCAPE VALUES- MOUNT ASPIRING PASTORAL LEASE**  
RELEASED UNDER THE OFFICIAL INFORMATION ACT

**KEY**

 Areas of significant landscape value

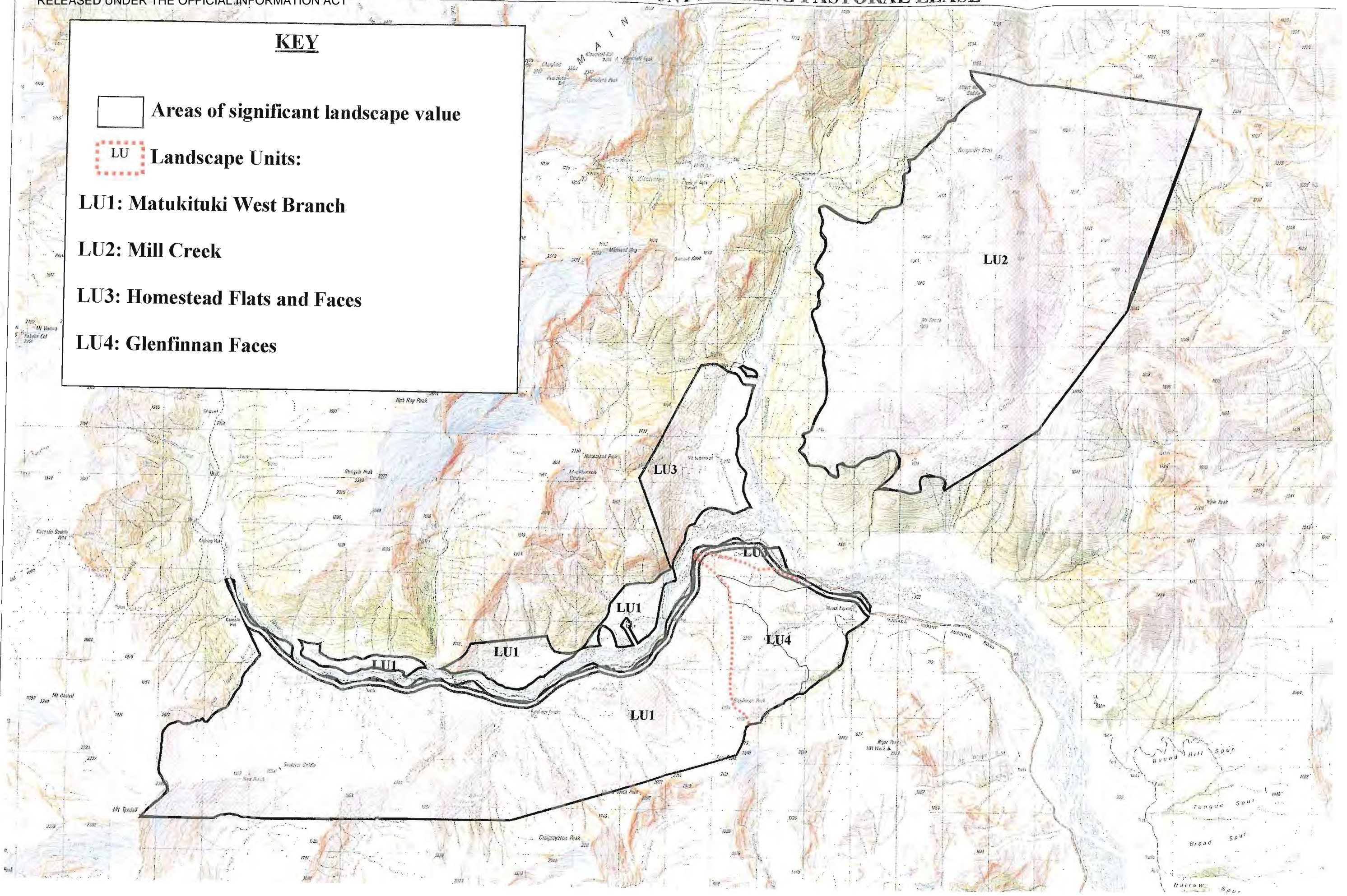
 Landscape Units:

**LU1: Matukituki West Branch**

**LU2: Mill Creek**

**LU3: Homestead Flats and Faces**

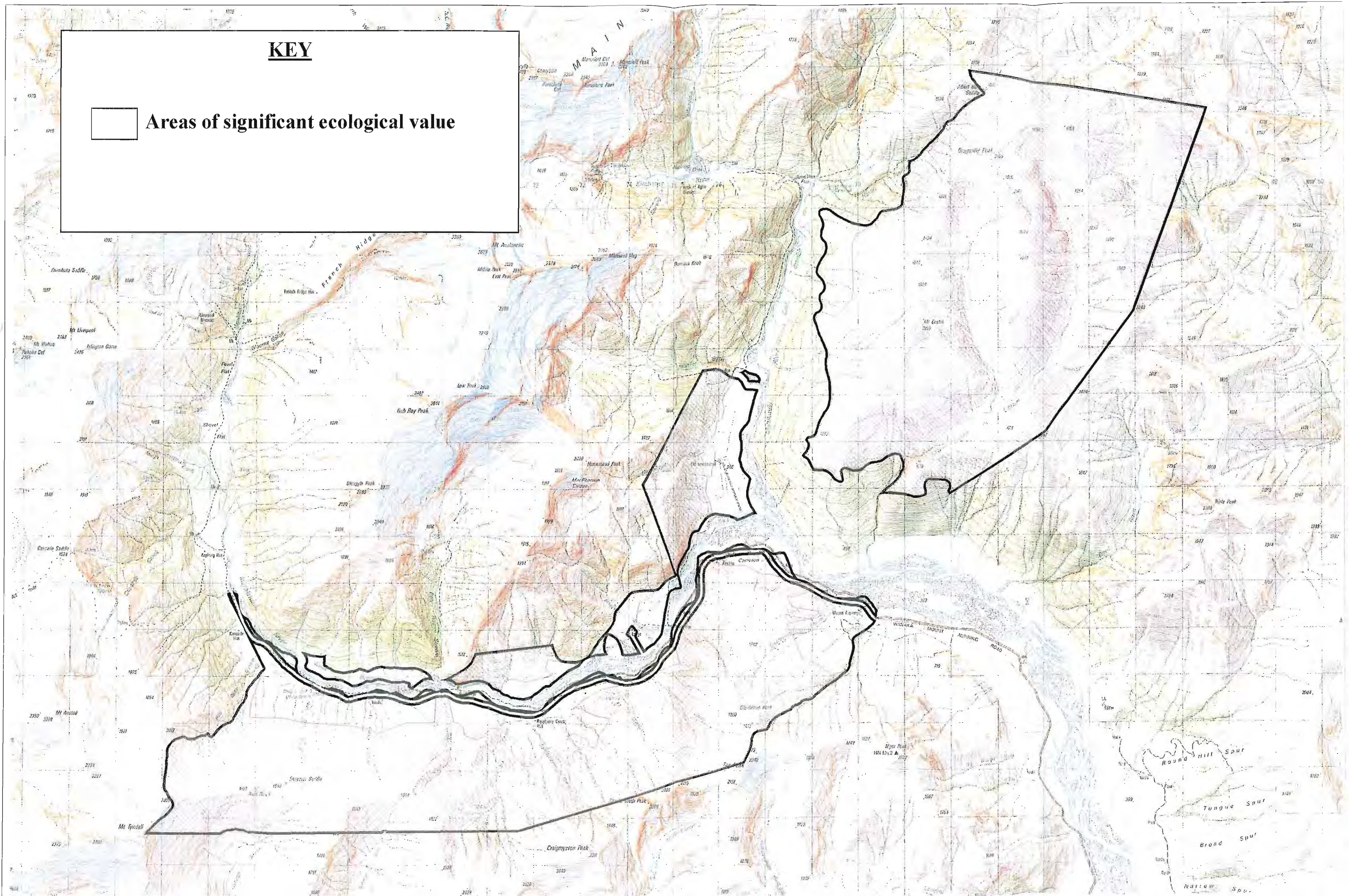
**LU4: Glenfinnan Faces**





# MAP 4.2.3: SIGNIFICANT INHERENT ECOLOGICAL VALUES- MOUNT ASPIRING PASTORAL LEASE

RELEASED UNDER THE OFFICIAL INFORMATION ACT





# MAP 4.2.4: SIGNIFICANT RECREATIONAL VALUES - MOUNT ASPIRING PASTORAL LEASE

RELEASED UNDER THE OFFICIAL INFORMATION ACT

