

Crown Pastoral Land Tenure Review

Lease name: MT NIMROD

Lease number: PT 094

Public Submissions - Part 2

These submissions were received as a result of the public advertising of the Preliminary Proposal for Tenure Review.

November

10

Submission 7

To Mike Todd
Opus International Consultants Ltd
P.O. Box 1482
Christchurch 8140

**SUBMISSION ON MT NIMROD TENURE REVIEW PRELIMINARY
PROPOSAL.**

SUBMITTER: ADRIAN COGLE

60 MATAI CRESCENT
HIGHFIELD
TIMARU 7910

REASON FOR SUBMISSION:

The Conservation Resources Report for Mt Nimrod noted the occurrence of several Silver Beech trees (*Nothofagus menziesii*). These trees, in all likelihood, represent the most easterly and southern distribution of silver beech in Canterbury and as such are a significant inherent feature both on this property and for the wider ~~area~~ Hunter Hills Ecological Area (Part of the Pareora Ecological Region. Only one other small area of silver beech association within the Pareora Ecological Region is, as far as I am aware, subject to any formal protection.

As such these trees are worthy of permanent protection in line with ecological sustainability advanced as a stewardship principle established for high country lands

It is not clear if the adjoining stream is of a size to have a marginal strip which if this was to be so then a measure of protection might be said to exist. However protection of these trees could better be achieved through the addition of approximately another 30 ha to the crown (DOC) land further down the catchment. (See map and Google aerial)

The trees would require a level of ongoing active management and so, I believe, this would not lend in, an ideal sense, to protection via a covenant unless such a covenant was well monitored and maintained.

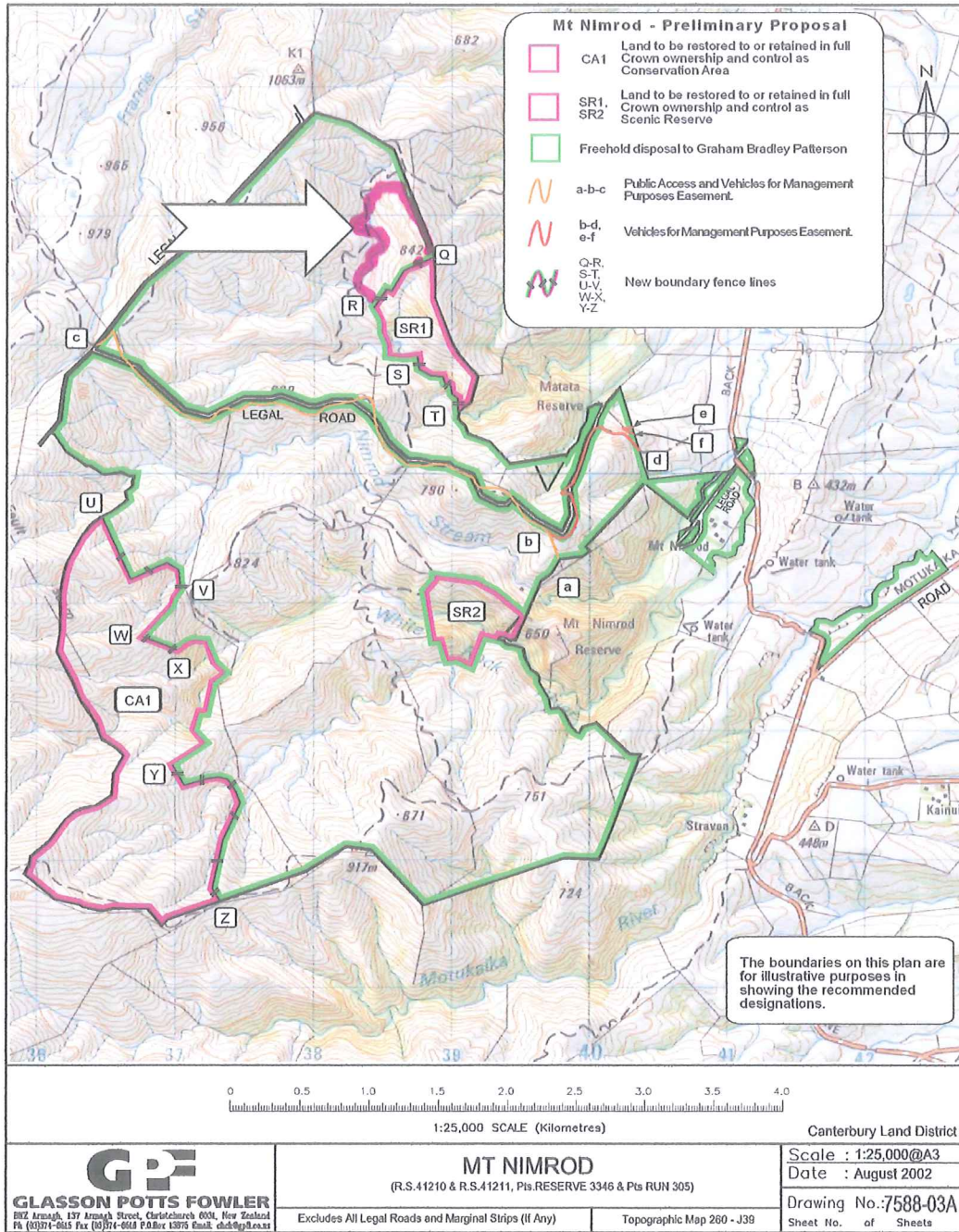
My experience of covenant management in South Canterbury tends to reinforce this position. Covenants even with the best will in the world are easily over looked when weighed against other competing demands of farm management and if the intention of the current government is to expand the use of covenants in the tenure review process then the potential for neglect will I suspect be further compounded.

Tying the trees to the proposed DOC area further down stream would mitigate against issues of fragmentation and would at the same time enhance and contribute to a wider degree of concordant landscape and natural character.

Access for farm management need not be compromised through any expansion of the protected area as an easement could be established allowing continued use of the farm track system. I doubt that farming practice will change in the short term as a result of the tenure review however it will facilitate change and this it is imperative to act now to achieve protection for the inherent values

The above submission is in line with goal 3 of the **NZ Biodiversity Strategy** more particularly with Objective 1.1 “Protecting Indigenous Habitats and Ecosystems”
Action (b)

RESULTS SOUGHT: Protection of the Silver Beech by (a) further addition of land held by the Crown for conservation purposes or reluctantly (b) the formation of a suitably sized covenant subject to robust monitoring and maintenance conditions

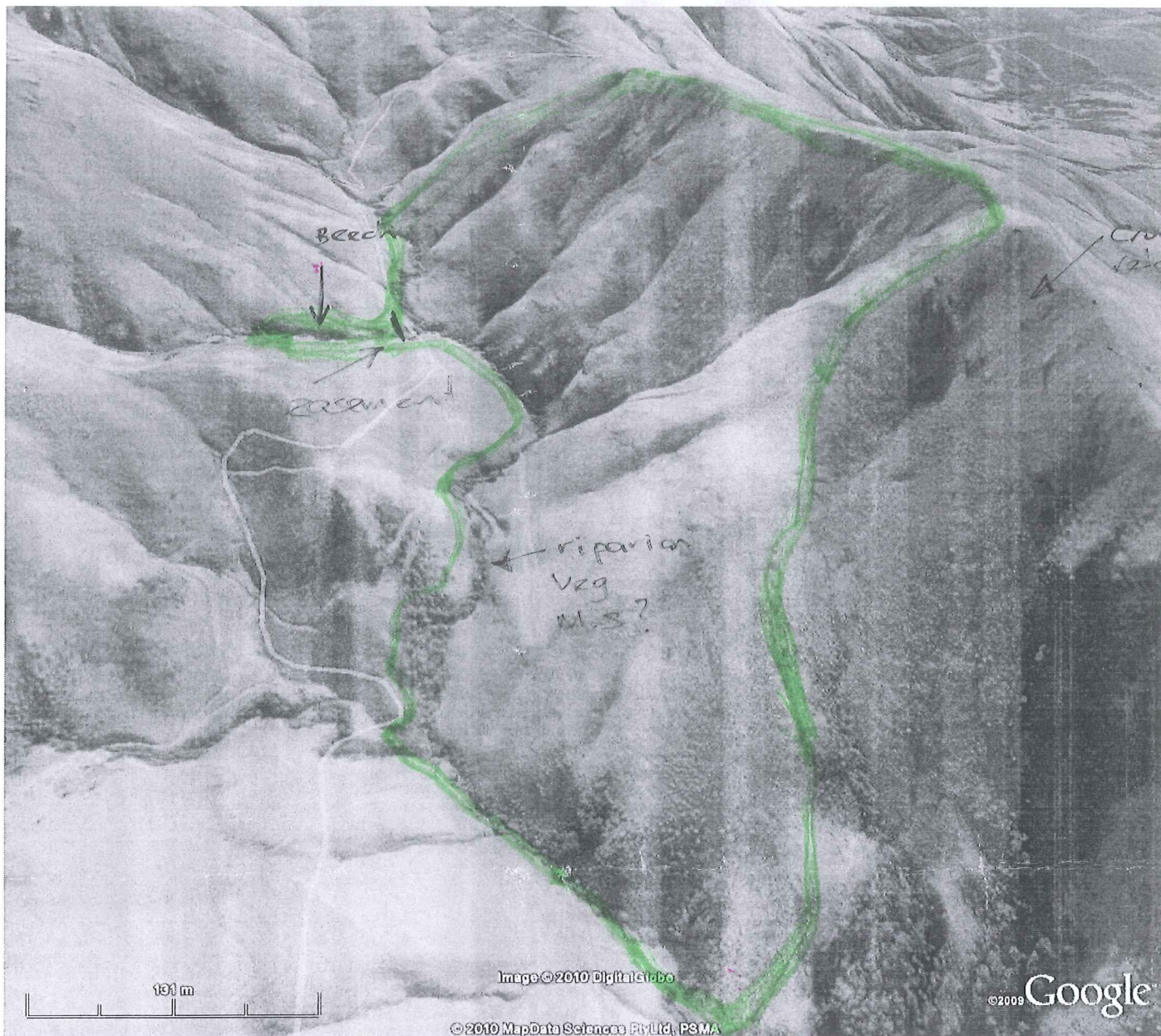


TR 80 Mt Nimrod Designations Plan_12082009

Arrow denotes approx position of *Nothofagus menziesii*

Area to add for protection of Silver Beech (approx 30 ha)





(additional)

- Suggestive protected area. approx 30⁺ ha.
- (1) avoids fragmentation
 - (2) Blends protection of beech's landscape (natural character)
 - (3) avoids areas of higher pastoral interest
 - (4) provides for farm easement

Submission 8

612 Moravale Rd
14 R.D. Cave 7984
10-3-10

Tenure Review Manager

Dear Mr Mike Todd,

As a more mature horse rider I enjoy trekking the hills without the pressure of vehicles & motorcycles causing stress to both horse & rider.

I hope it will be possible to have access to the proposed Conservation Area on Mt Nimrod from the Mt Nimrod Reserve. The walking access track has steps, is quite narrow & has overhead branches all of these would be hazardous to riders.

I have ridden the Mt Nimrod area several times, it is a great place to ride, I hope it will be accessible for horse riding in the future.

Yours faithfully
Gillian Johns

Submission 9

Submission 9



NORTH OTAGO TRAMPING AND MOUNTAINEERING CLUB
PO Box 217
Oamaru 9444

The Commissioner of Crown Lands
C/o Mike Todd
Opus International Consultants Ltd
PO Box 1482
Christchurch 8140

15 March 2010

Dear Mike Todd

Mt Nimrod Tenure Review

The North Otago Tramping and Mountaineering Club supports the intent of the preliminary proposal for tenure review of the Mt Nimrod pastoral lease. In particular, we support the proposed extensions to the Matata and Mt Nimrod Reserves and the provision of an easement for public foot access through the proposed freehold area.

We do, however, question whether full Crown ownership and control is required for the area designated CA1. Given that the existing qualities which make it desirable to protect this area, including what is described as "high natural value", have persisted under pastoral lease with, presumably, extensive grazing management, it is difficult to see why continued protection cannot be provided by a covenant allowing for appropriate levels of grazing.

Yours sincerely

A handwritten signature in black ink, appearing to read "John Chetwin".

John Chetwin
Secretary