

Crown Pastoral Land Tenure Review

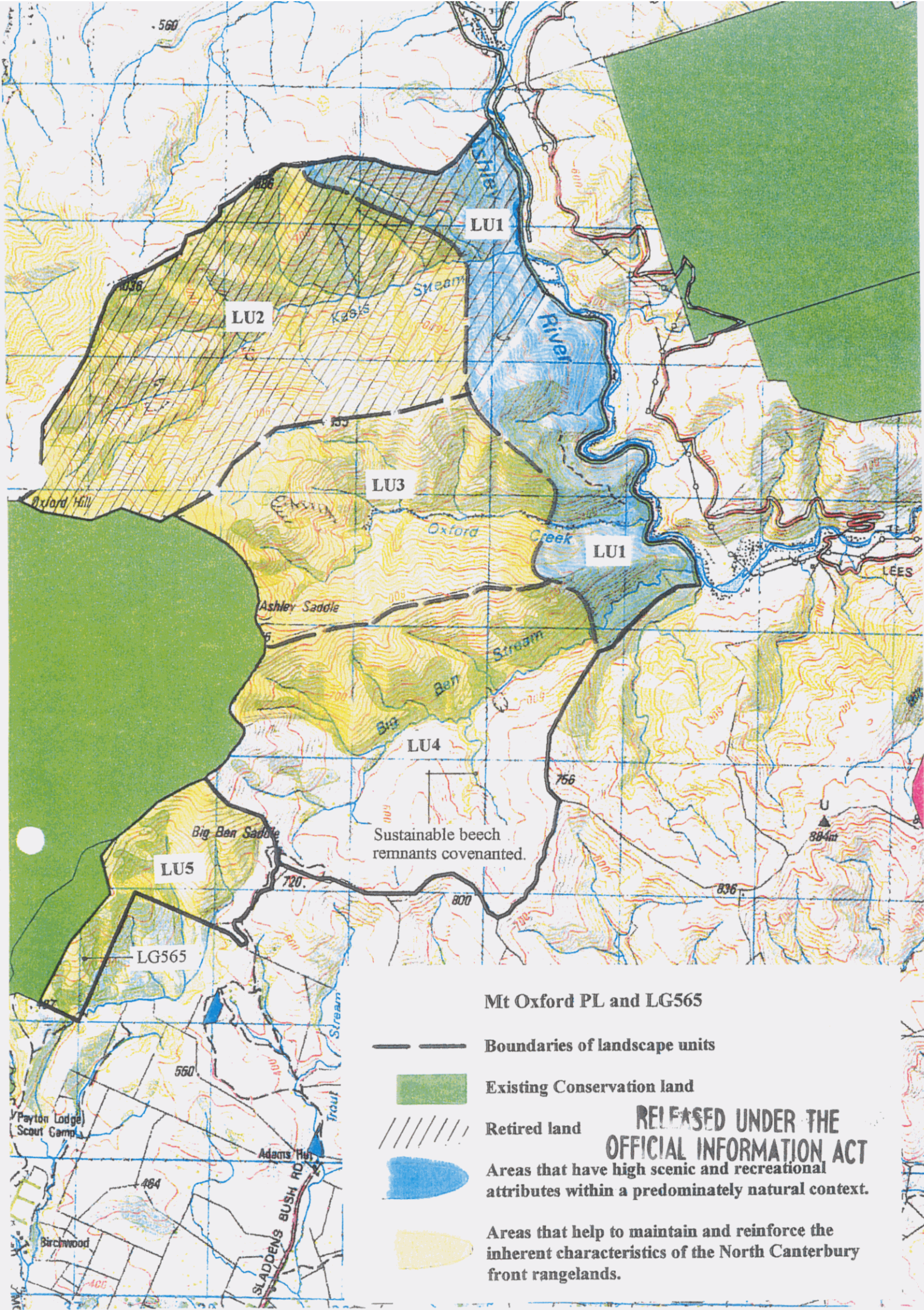
Property : Mt Oxford

Plans attaching to the conservation resources report






These plans attach to and support the conservation resources report provided by the Department of Conservation.

They are released under the Official information Act 1982.

Copied June 2003



Mt Oxford PL and LG565

-  Boundaries of landscape units
-  Existing Conservation land
-  Retired land
-  Areas that have high scenic and recreational attributes within a predominately natural context.
-  Areas that help to maintain and reinforce the inherent characteristics of the North Canterbury front rangelands.

**RELEASED UNDER THE
OFFICIAL INFORMATION ACT**

Sustainable beech remnants covenanted.

Payton Lodge Scout Camp

Birchwood

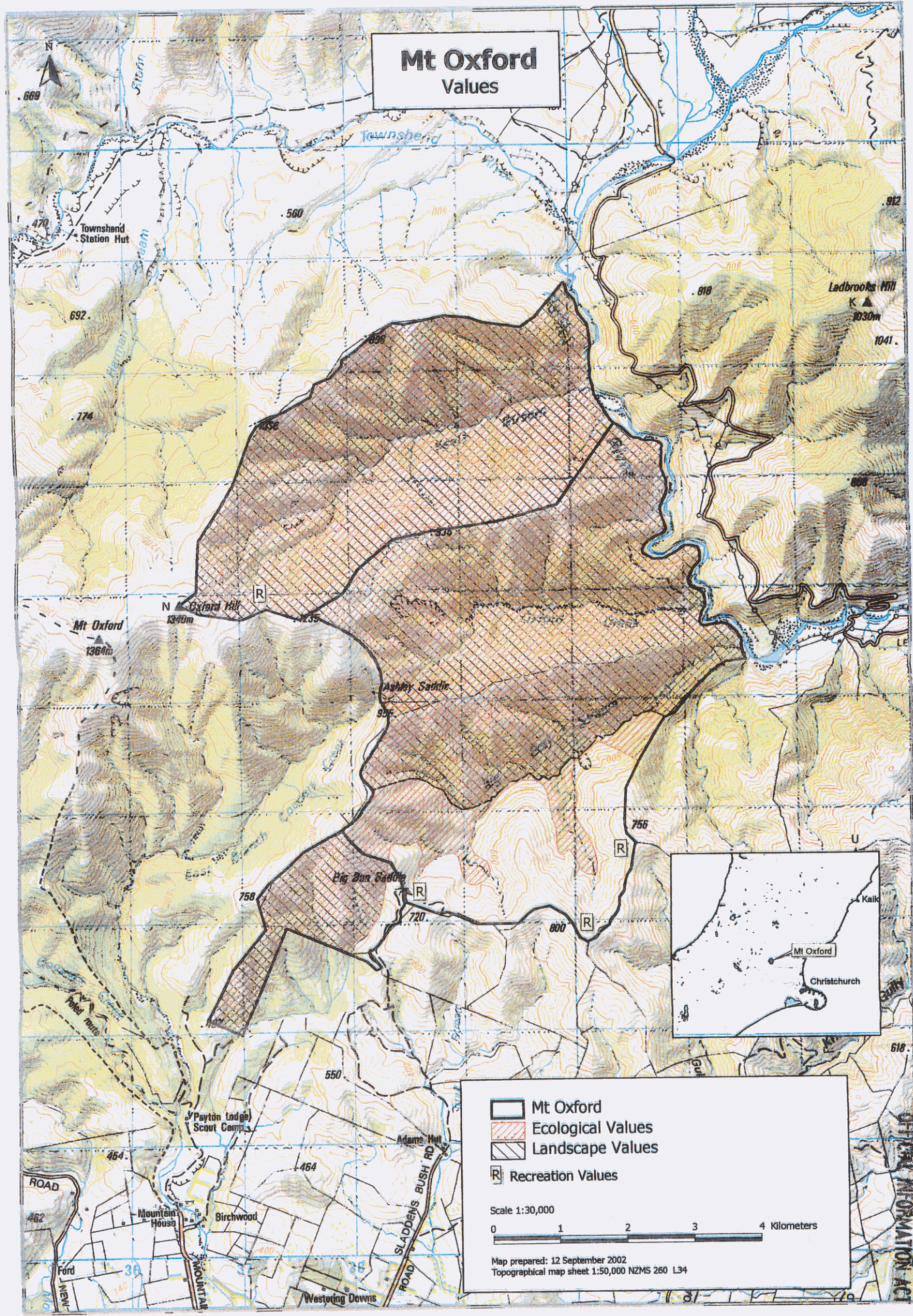
Adams Hut

SLADDENS BUSH RD

LEES

U
884m

Mt Oxford Values



- Mt Oxford
- Ecological Values
- Landscape Values
- Recreation Values

Scale 1:30,000

0 1 2 3 4 Kilometers

Map prepared: 12 September 2002
 Topographical map sheet 1:50,000 NZMS 260 L34



RELEASED UNDER THE
 OFFICIAL INFORMATION ACT

