

## **Crown Pastoral Land Tenure Review**

**Lease name : MT PEMBER**

**Lease number : PC 027**

### **Fish & Game report**

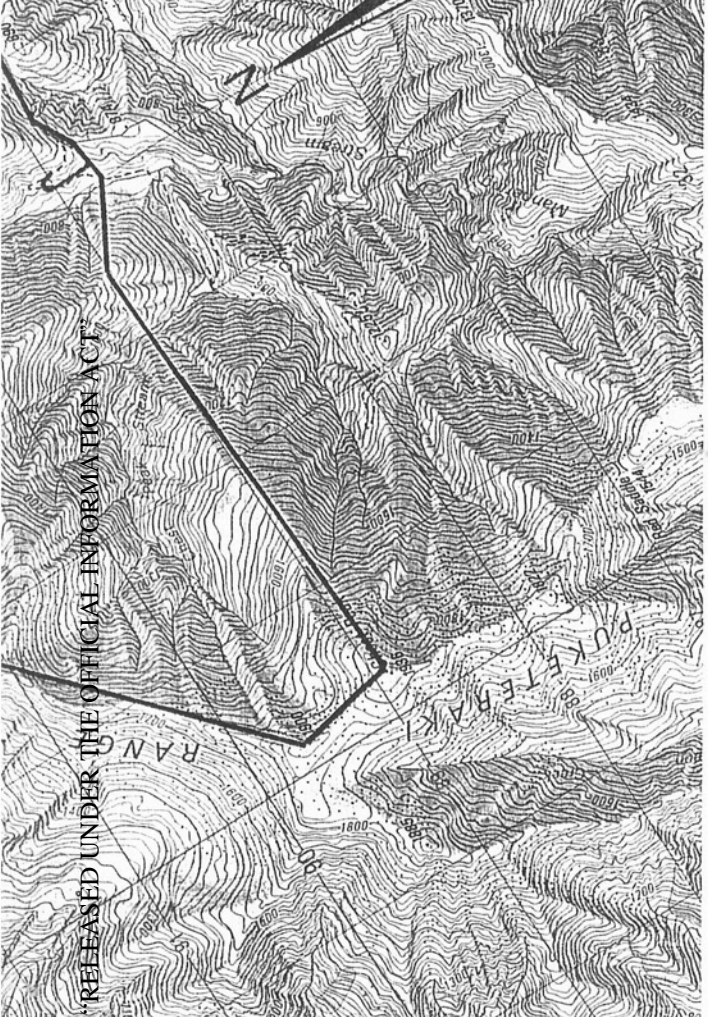
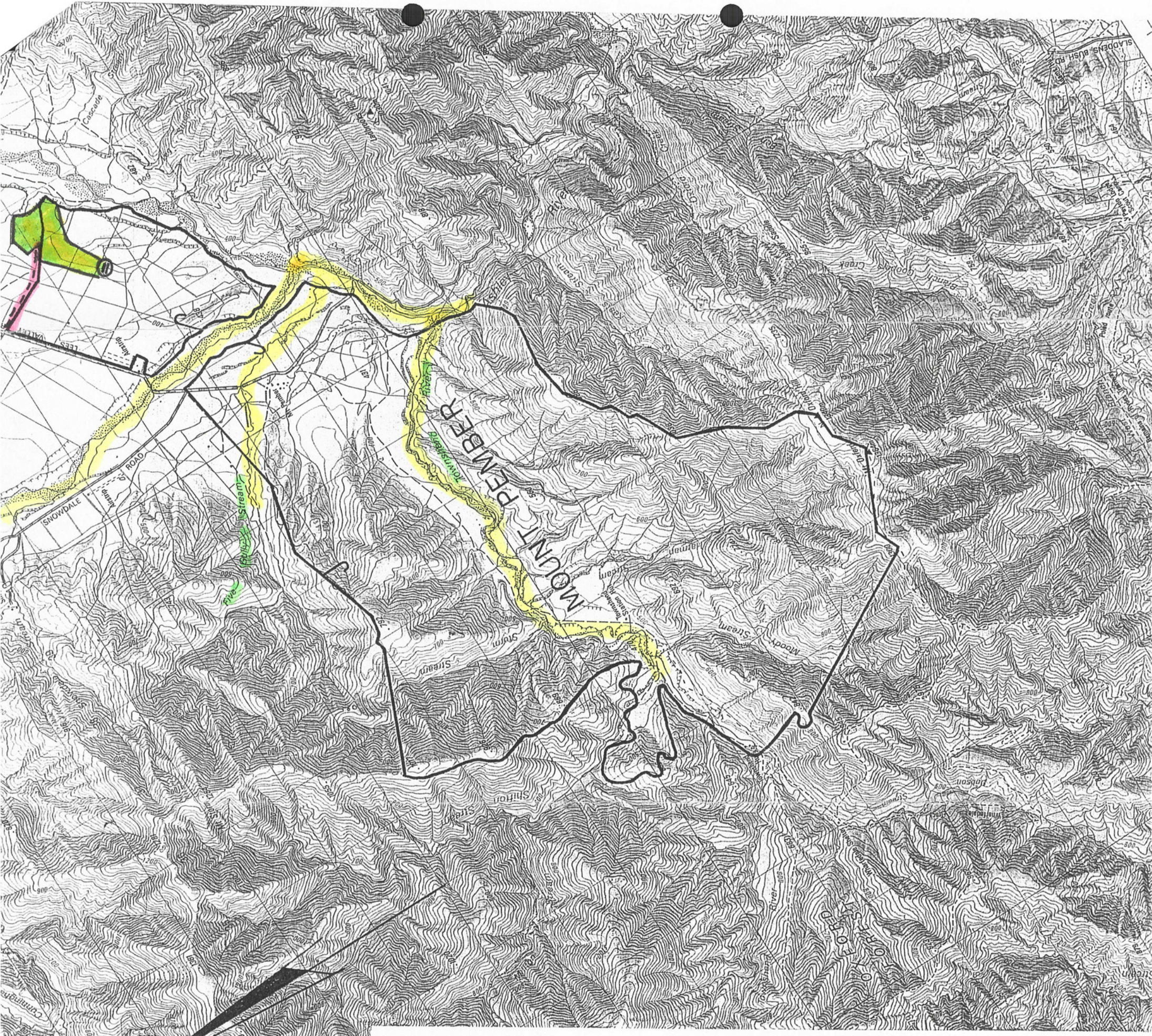
These plans attach to and support the fish and game report provided by Fish & Game NZ.

They are released under the Official Information Act 1982.

**July 04**







RELEASED UNDER THE OFFICIAL INFORMATION ACT




### Pastoral Lease Boundaries

## Mt. Pember (South)

-  Access Route
-  Wetland Area (Protected & Access for hunters/management).
-  Dam Site. L34
-  20m riparian protection & access strips (both sides of water course).

**Key**

 Run Boundary

