

Crown Pastoral Land Tenure Review

Lease name : OBELISK STATION

Lease number : PO 264

Conservation Resources Report - Part 2

As part of the process of Tenure Review, advice on significant inherent values within the pastoral lease is provided by Department of Conservation officials in the form of a Conservation Resources Report. This report is the result of outdoor survey and inspection. It is a key piece of information for the development of a preliminary consultation document.

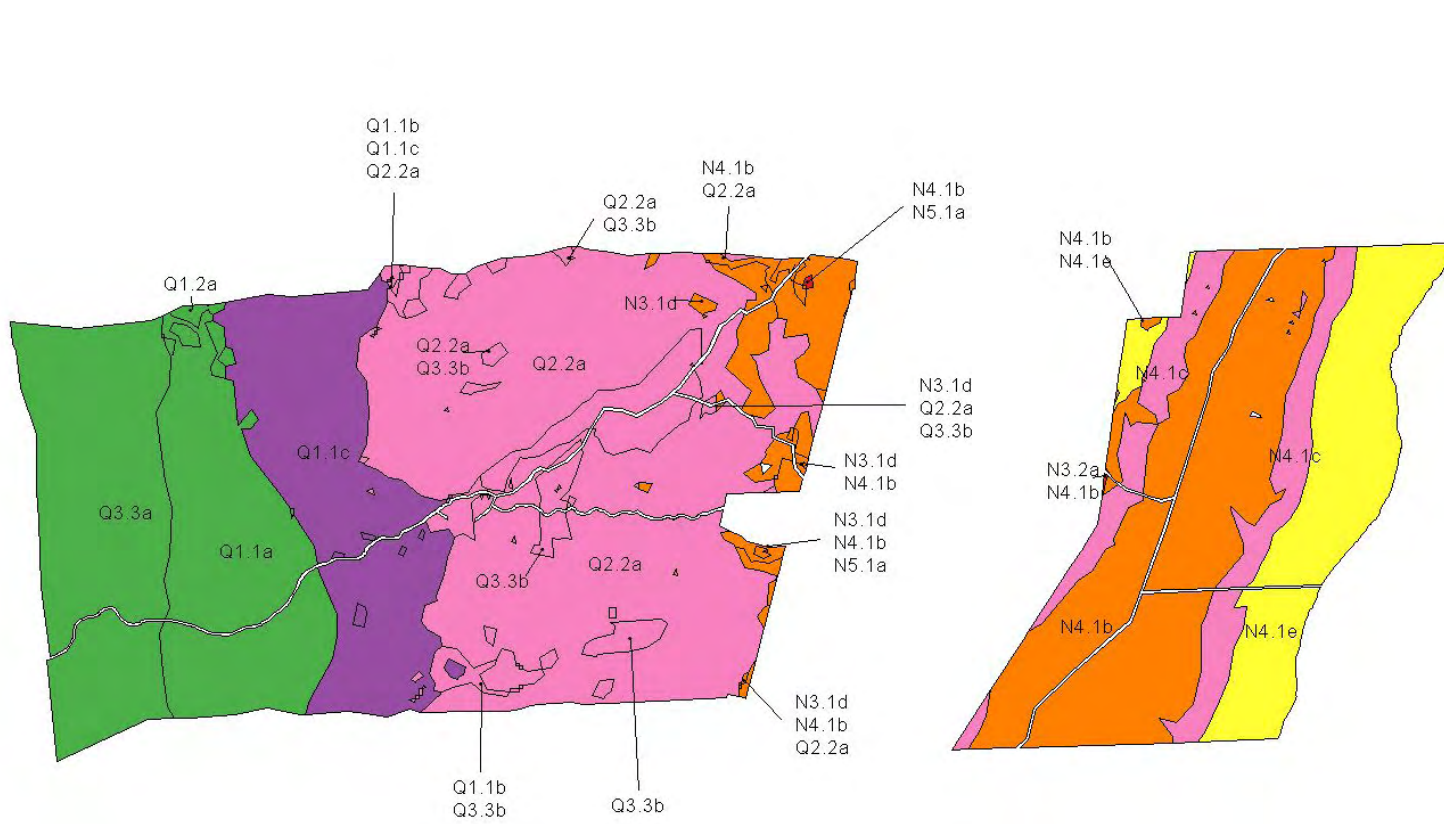
Note: Plans which form part of the Conservation Resources Report are published separately.

These documents are all released under the Official information Act 1982.

December

10

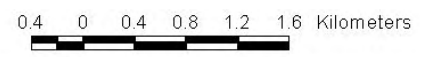
4.2.6



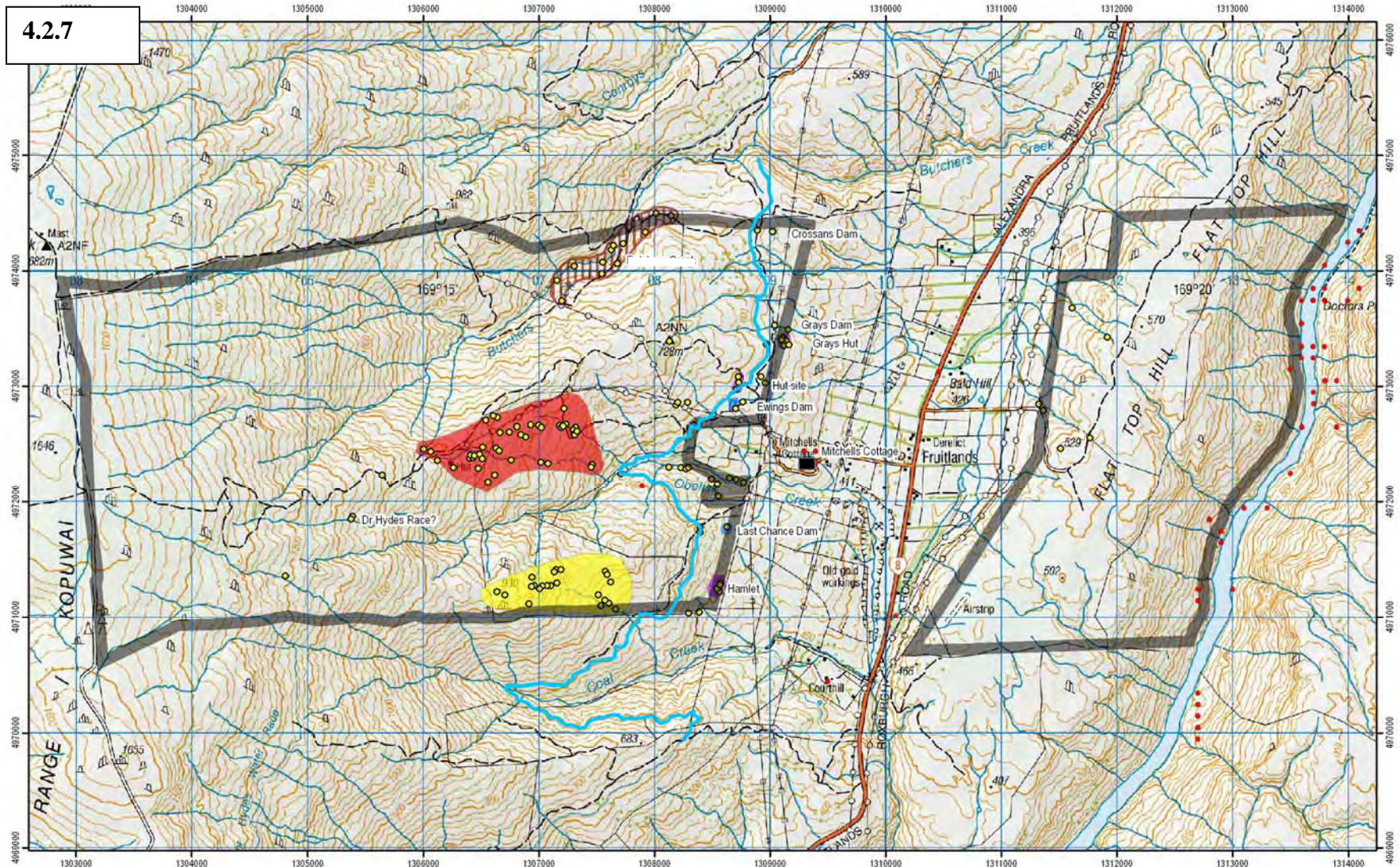
Obelisk lenz sum

- Acutely Threatened
- At Risk
- Chronically Threatened
- Critically Underprotected
- No Threat Category
- Underprotected

**Obelisk
LENZ**

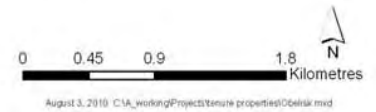


4.2.7

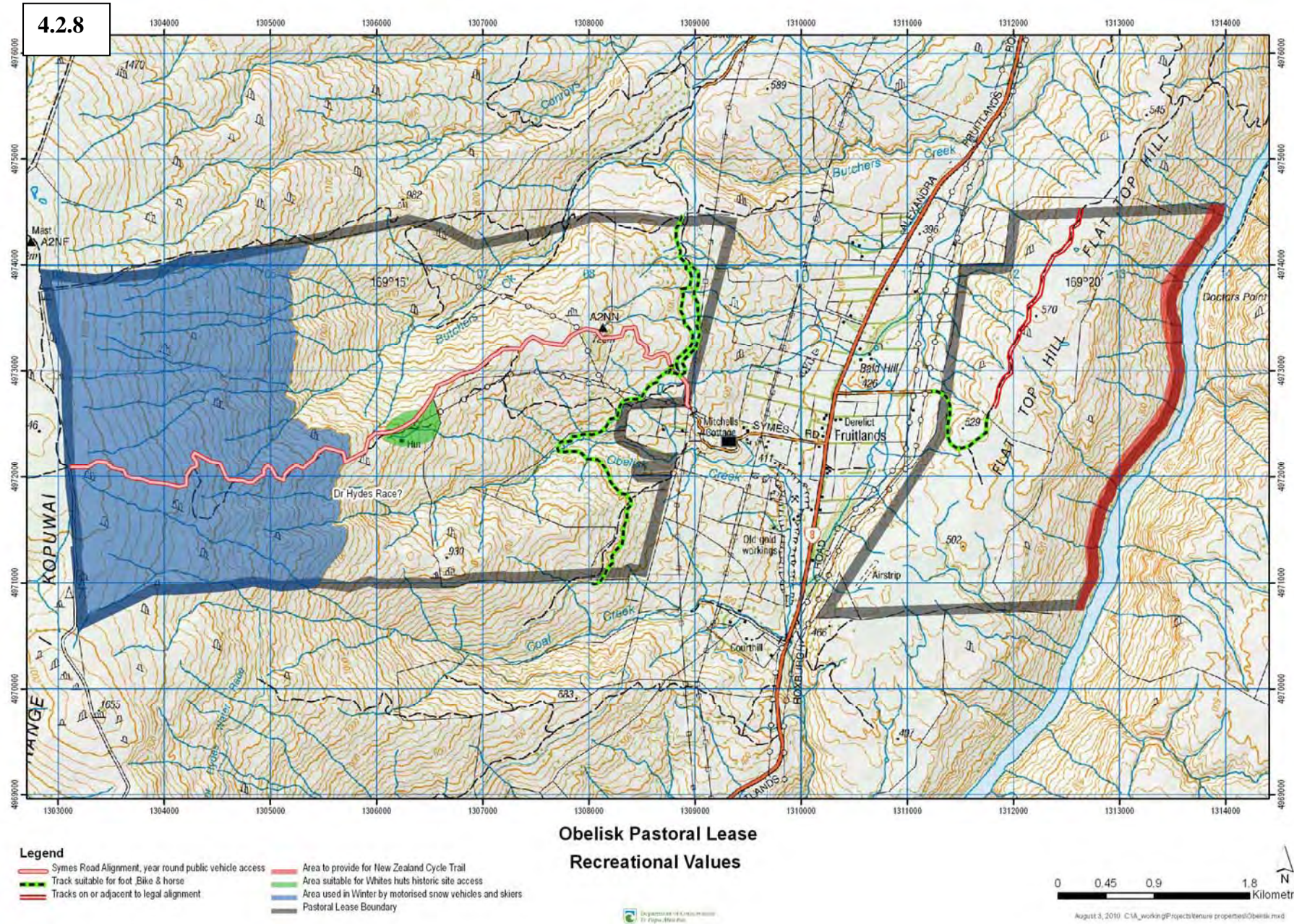


- Legend**
- Areas of Historic Significance
 - Butchers Creek
 - Dams
 - Huts
 - Whites reef
 - Grays Reef
 - Last Chance Water Race
 - Pastoral Lease Boundary
 - Historic Points
 - Historic NZAA Records

**Obelisk Pastoral Lease
Historic Areas of Significant Value**



August 3, 2010 C:\A_working\Projects\tenure properties\Obelisk.mxd



4.3.1 Landscape Unit Photos

Obelisk/Old Man Crest and Upper Faces (LU1)



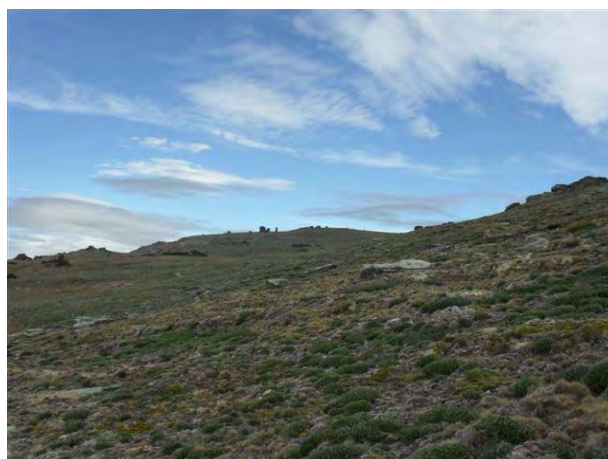
Deer fence on north west boundary (Old Man Range)



Summit ridge Old Man Range. Barren, tundra like appearance and rock tors are key characteristics



Peri-glacial features and herbfield/cushionfield and rock outcrops are the dominant features below the crest



Low herbfield/cushionfield below the summit ridge

Obelisk Mid Faces (LU2)



Mid Altitude slopes of the Old Man Range



Whites hut adjacent to White Reef



Whites Reef



Tussock fragmented at lower part of LU2 (approx. 800m)

Fruitlands Faces (LU3)



Sluicing site in foreground. Tussock setting significant for the appreciation of the historic site



Disused reservoir part of mining landscape



Remains of settlement close to east boundary of the main block enclosed within old macrocarpa trees



Typical vegetation on ridge north of Symes Road. Recent patch burning of shrubland in foreground



Typical mixed short tussock/pasture/grey shrubland (near Trig 728m)



Obelisk Creek with upgraded Last Chance water race

Flat Top Hill (LU4)



Iconic Central Otago landscape



Crest of Flat Top Hill. Small ephemeral wetlands occur on poorly drained sites surrounded by predominantly short tussock and pasture



Cottonwood shrubland on Flat Top Hill near the edge of the Roxburgh Scarp



Western face (Fruitlands side) of Flat Top Hill

Roxburgh Gorge Scarp (LU5)



Rocky rampart on upper edge of scarp face with extensive shrubland (Cottonwood dominant) below



Roxburgh Gorge scarp with dam below

4.3.2 Obelisk PL Historic Photos



Plate 1. Hamlet site (G42/276)



Plate 2. White's Hut (G42/294)



Plate 3. Two roomed hut below White's Reef



Plate 4. Single roomed hut below White's Reef.



Plate 5. View east overlooking hut site and workings below Gray's Reef (G42/333).



Plate 6. Gray's Reef (G42/333)



Plate 7. Last Chance Dam



Plate 8. Hut site (G42/326) located above Ewing's Dam



Plate 9. Front wall of Gray's Dam above Gray's Hut site



Plate 10. Alluvial ground sluicing on Flat Top Hill below an earthen raised dam wall

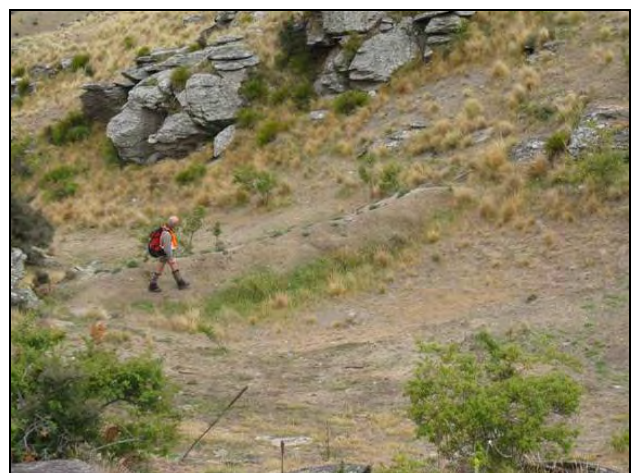


Plate 11. Earthen raised dam wall located on Flat Top Hill.



Plate 12. Schist upright and alluvial ground sluicing on Flat Top Hill (G42/327)



Plate 13. Movie set stables on Flat Top Hill



Plate 14. Trig C (G42/329) on Flat Top Hill



Plate 15. Trig D (G42/331)



Plate 16. Gray's Hut site (G42/330)



Plate 17. Stacked schist structure (2) at Gray's Hut site (G42/330)



Plate 18. Stacked schist structure (3) at Gray's Hut site (G42/330)



Plate 19. Dry stacked schist structure (2) above hut site (G42/326)



Plate 20. Stacked schist structure (3) beside hut site (G42/326)



Plate 21. Stacked schist structure against an outcrop