

## **Crown Pastoral Land Tenure Review**

**Lease name : OMARAMA STATION**

**Lease number : PO 369**

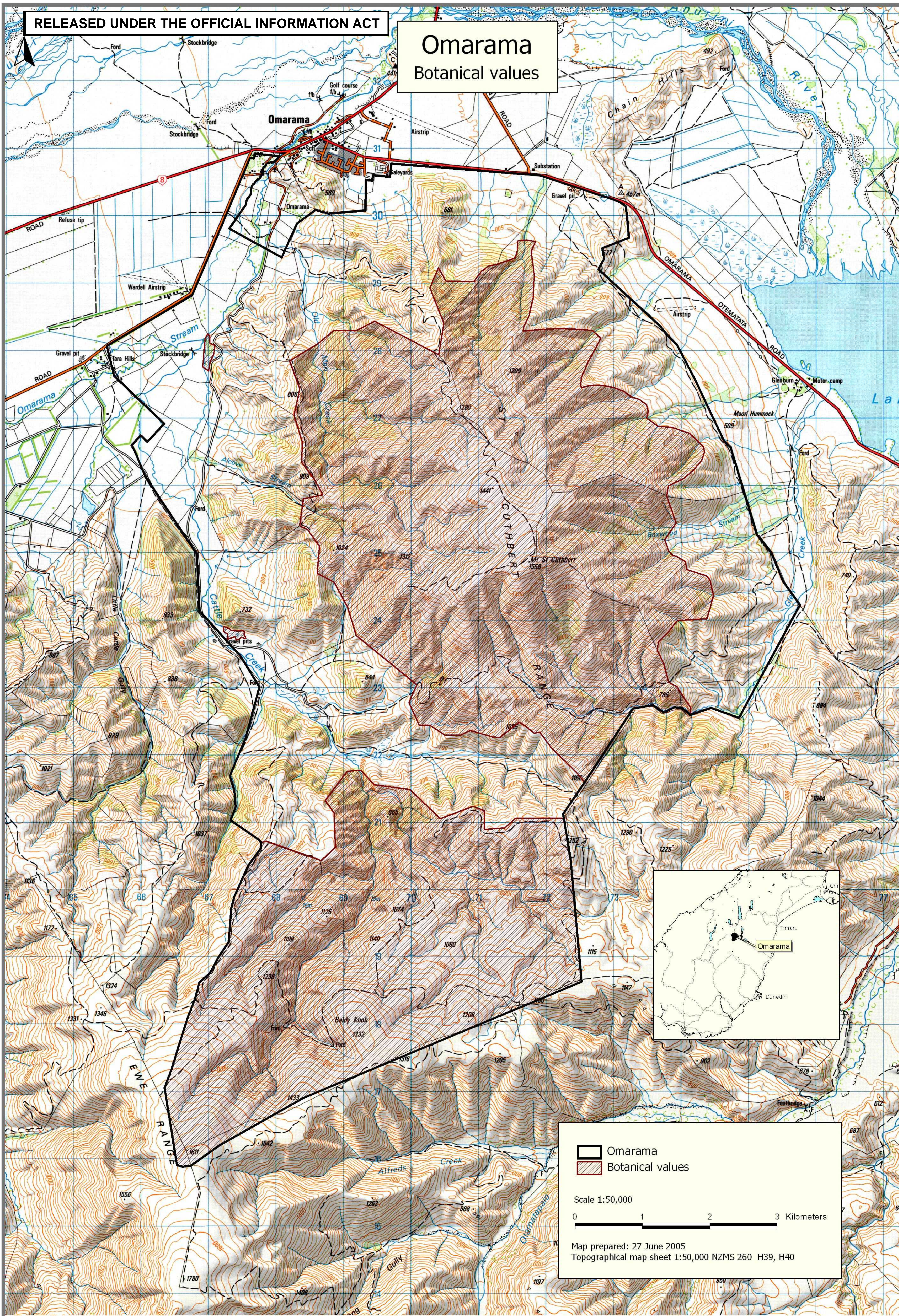
### **Plan attaching to the Conservation Resources Report - Botanical Values Map**

The following plan forms page 13 of the Conservation Resources Report provided by the Department of Conservation.

It is released under the Official information Act 1982.

**August 05**

# Omarama Botanical values



**Legend**

- Omarama
- Botanical values

Scale 1:50,000

0 1 2 3 Kilometers

Map prepared: 27 June 2005  
Topographical map sheet 1:50,000 NZMS 260 H39, H40