

Crown Pastoral Land Tenure Review

Lease name : OMARAMA STATION

Lease number : PO 369

Plan attaching to the Conservation Resources Report - Invertebrate Values Map

The following plan forms page 31 of the Conservation Resources Report provided by the Department of Conservation.

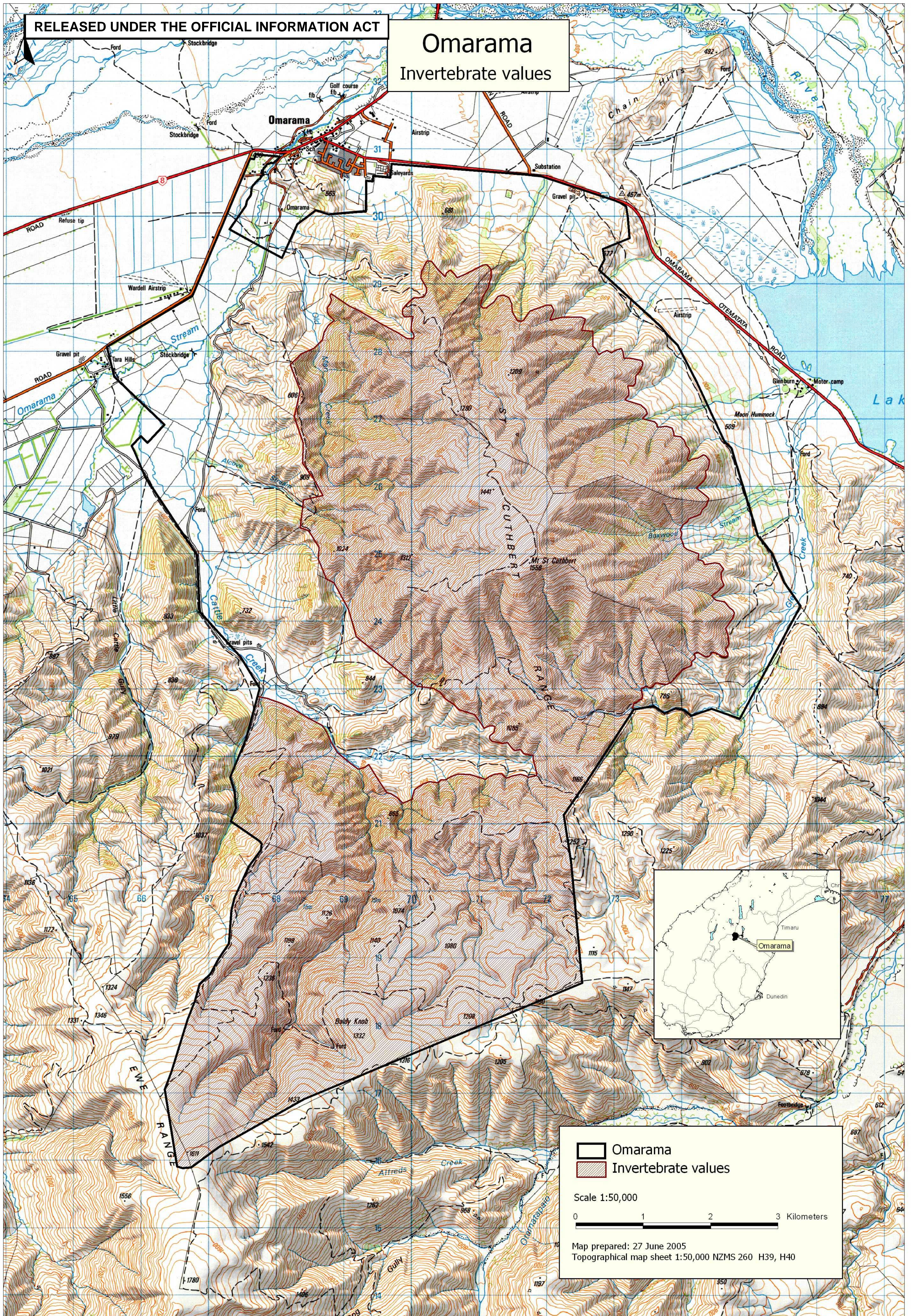
It is released under the Official information Act 1982.



August 05

RELEASED UNDER THE OFFICIAL INFORMATION ACT

Omarama

Invertebrate values



 Omarama
 Invertebrate values

Scale 1:50,000

0 1 2 3 Kilometers

Map prepared: 27 June 2005
Topographical map sheet 1:50,000 NZMS 260 H39, H40