

Crown Pastoral Land Tenure Review

Lease name : PISGAH DOWNS

Lease number : PO 248

Conservation Resources Report - Part 2

As part of the process of Tenure Review, advice on significant inherent values within the pastoral lease is provided by Department of Conservation officials in the form of a Conservation Resources Report. This report is the result of outdoor survey and inspection. It is a key piece of information for the development of a preliminary consultation document.

Note: Plans which form part of the Conservation Resources Report are published separately.

These documents are all released under the Official information Act 1982.

March 05

Appendix 8: New Zealand Deer Stalkers Association Submission

“RELEASED UNDER THE OFFICIAL INFORMATION ACT”
DEPT OF CONSERVATION
OTAGO CONSERVANCY

18 MAY 2004

RECEIVED

30 Eamscleugh rd
Alexandra
13-05-04

Department of Conservation
Tony Perrett
Box 5244
Dunedin

Re: Tenure review

On behalf of the Central Otago Deersalkers club.

Dear sir,

Having attended the tenure review meetings relating to .-

- M! Dasher
- Pisgah Downs
- Carrick
- Shag Valley
- Balmoral
- Herron
- Cluden
- Morven Hills
- Walter Peak
- Rees Valley

CONS

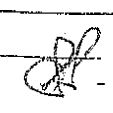
A.M.

C.R.M.

B.S.M.

TS M.

H.R.A

H.C.T.R.M. 

K.A.M

OTHER

stations, I was impressed when asked to forward input to the review.

1. On behalf of hunters I would like to point out the benefits to the Conservation Estate should they (DOC) hold the right to give access to any of the above properties, for the right to hunt. When farmers hold on to this right, there is a grave risk of game animal numbers increasing unless you (DOC) have a monitoring program.

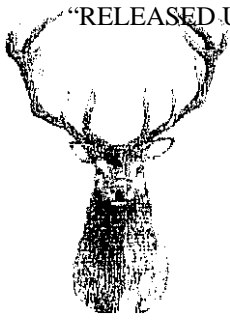
- would also like you to know that should farmers retain the right to govern the access, hunters as a large recreational group gains nothing through the review process.

2. Our club would like to see formed roads not only to, but also giving reasonable access to back portions of all the properties especially if paper roads or farm tracks are already there.

3. We would also like to thank you, for your efforts to bring some unique landscapes into the DOC estate.

Thank You
Yours Sincerely
Alan Mackie

PAID 14-04-04



RELEASED UNDER THE OFFICIAL INFORMATION ACT

New Zealand Deerstalkers' Association

Incorporated

North Otago Branch, 67 Wansbeck St,
OAMARU

16 May, 2004

DEPT OF CONSERVATION
OTAGO CONSERVANCY

Department of Conservation
Attn: Tony Perrett
P.O.Box 5244
Dunedin

20 MAY 2004

RECEIVED

RE: Tenure review of Otago property

Dear Mr. Perrett,

On behalf of the North Otago Deerstalkers Association we would like to make a submission on the following properties under land tenure review. The properties of interest are: Mt Dasher, Pisgah Downs, Carrick, Shag valley, Balmoral, Herron, Cluden, Morven hills, Walter peak and Rees valley.

We would like access to the above properties for recreational hunting when the land reverts to conservation estate. As well as providing important recreational opportunities for hunters to enjoy the mountains and wild game animals, we will be keeping the population under control without the use of poisons.

We would also need vehicle access where formed tracks exist due to the distances needed to be covered to hunt effectively. Foot access is not adequate due to the extra time required to travel to a hunting area, particularly for the weekend hunter.

Our club members have hunted some of the properties under review for many years. We have had an excellent relationship with the farmers and have provided wild animal control.

All Deerstalkers Association members have the added benefits of a \$5 million public liability insurance cover which includes fire suppression cover in the unlikely event of disaster.

We would like to wish you well for the land tenure process and would like to continue contact.

Yours Sincerely

Nick Sim
President
North Otago Deerstalkers Association

CONS
A.M.
C.R.M.
B.S.M.
T.S.M.
H.RA
H.CTR.M ✓
KAM.
OTHER



New Zealand Deerstalkers' Association

Incorporated

The Conservator
 Department of Conservation
 P O Box 5244
 DUNEDIN

Your fax 477 8626
 (For Tony Perrett)

14MAY04

Dear Sir,

TENURE REVIEWS: OTAGO LAND DISTRICT: COMMENTS

We are aware that the following runs are undergoing tenure review:

- Mt Dasher - N Otago
- Pisgah Downs - N Otago
- Carrick - C Otago
- Shag Valley - E Otago
- BalmoraJ - N Otago
- Herrons - C Otago.
- Cluden - Lindis
- Morven Hills - Lindis area
- Walter Peak - Eyre Mountains

and that there is some recreational hunting interest in all of them. (We trust that wild animals continue to remain subject to the provisions of 8.23 of the Wildlife Act (1953) which ensures Crown ownership of them unless or until they are lawfully killed.)

We would respectfully draw your attention to the relatively low-cost option which recreational hunting provides for wild animal control in these areas, and to this end would also remind you of the desire for recreational hunters to be able to use vehicle tracks (where they have been constructed) for vehicular use.

This is because most recreational hunters undertake much of their hunting in weekends and beyond normal working hours; their capacity for hunting is sharply reduced when they are required to walk, rather than drive appropriate vehicles on existing formed accesses to their hunting areas.

We would also remind you that NZOA members carry a \$5 million insurance cover against damage claims from hunting activities in the field.

Yours faithfully,

Chaz Forsyth
 South Island Vice President

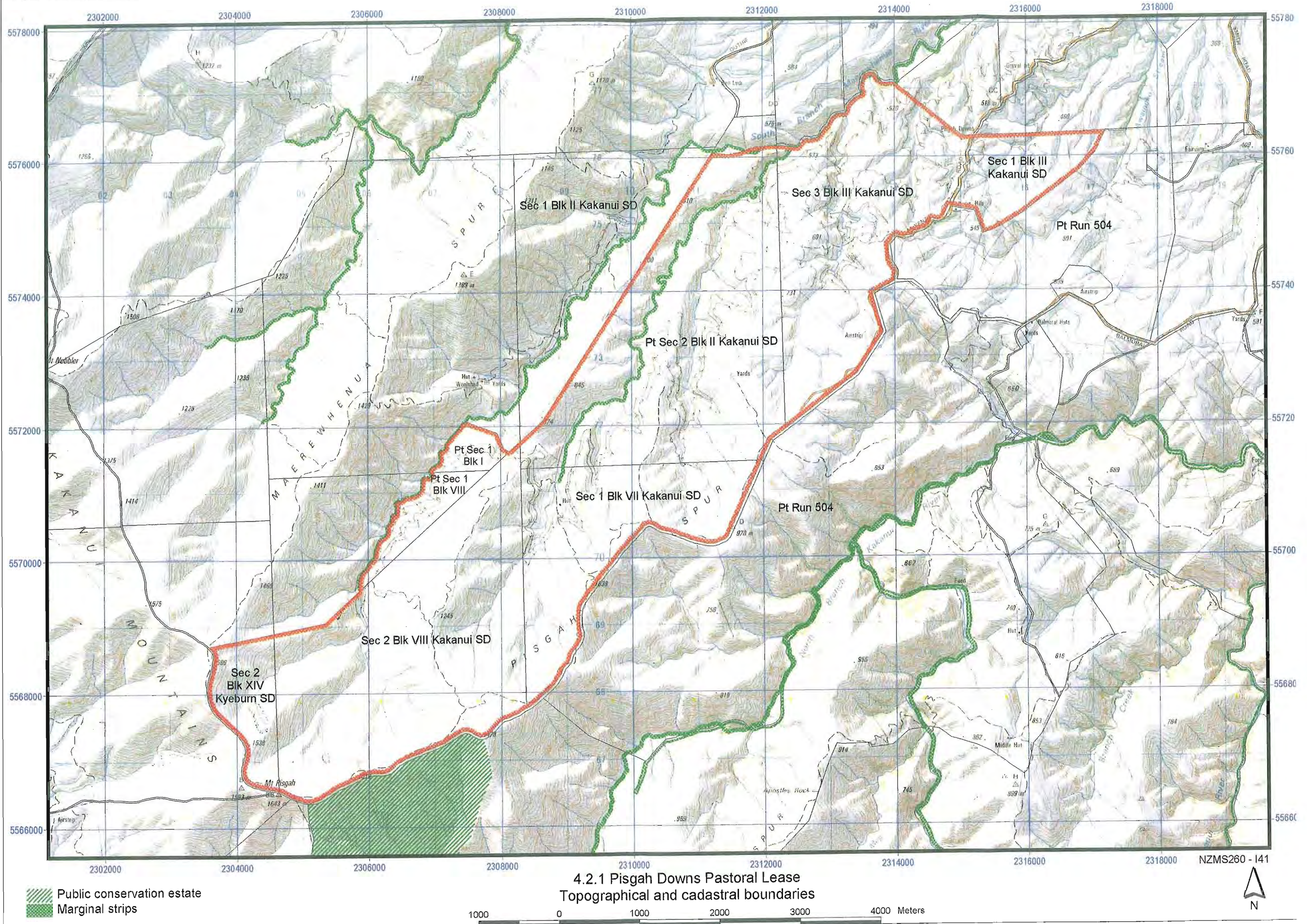
4.2 *Illustrative Maps*

4.2.1: Topographic and cadastral boundaries



4.2.2: Landscape units and significant landscape values

4.2.3: Significant ecological, historic and recreational resources

4.2.4: Pisgah Downs pastoral lease farm blocks

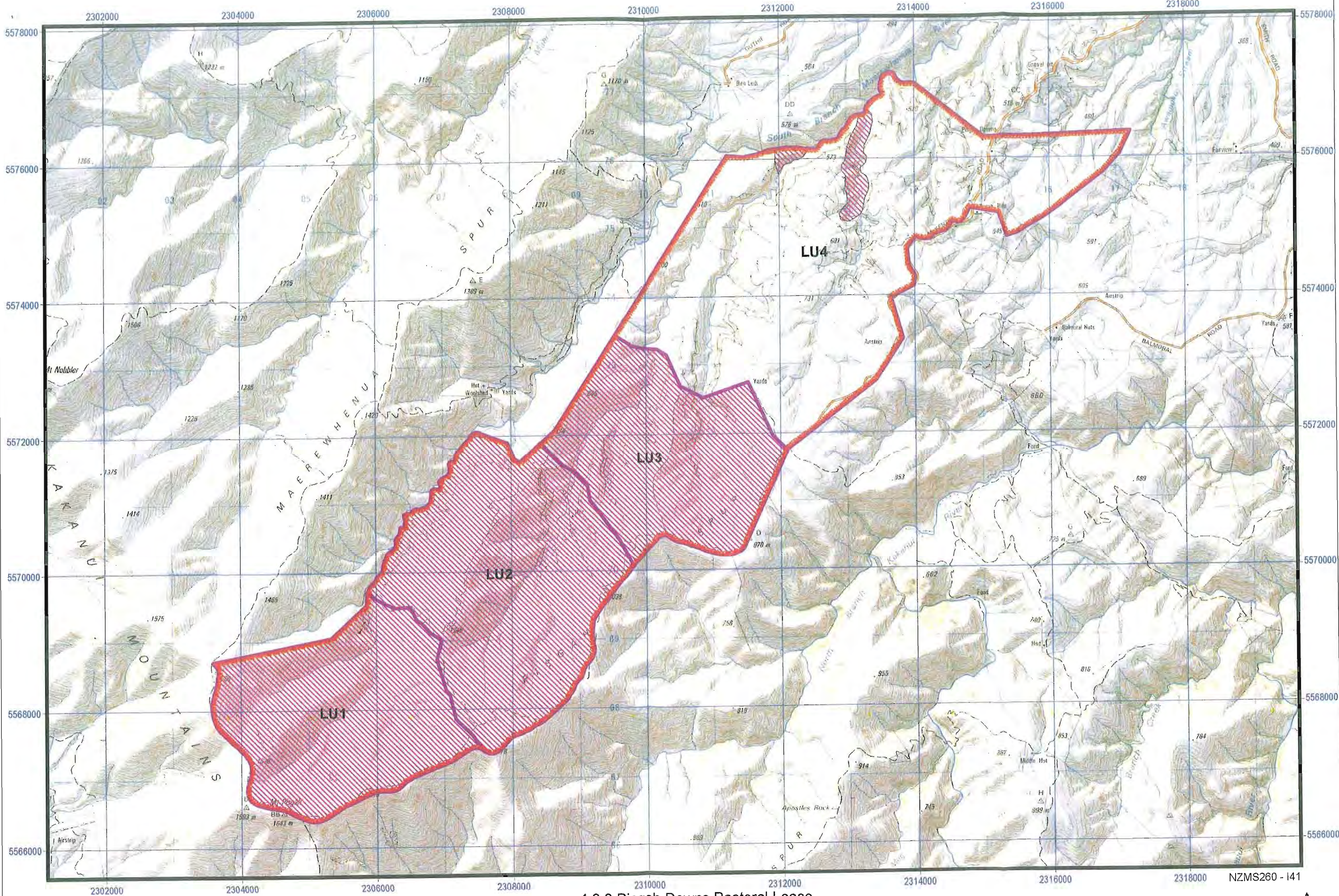


4.2.1 Pisgah Downs Pastoral Lease
Topographical and cadastral boundaries

 Public conservation estate
 Marginal strips

1000 0 1000 2000 3000 4000 Meters

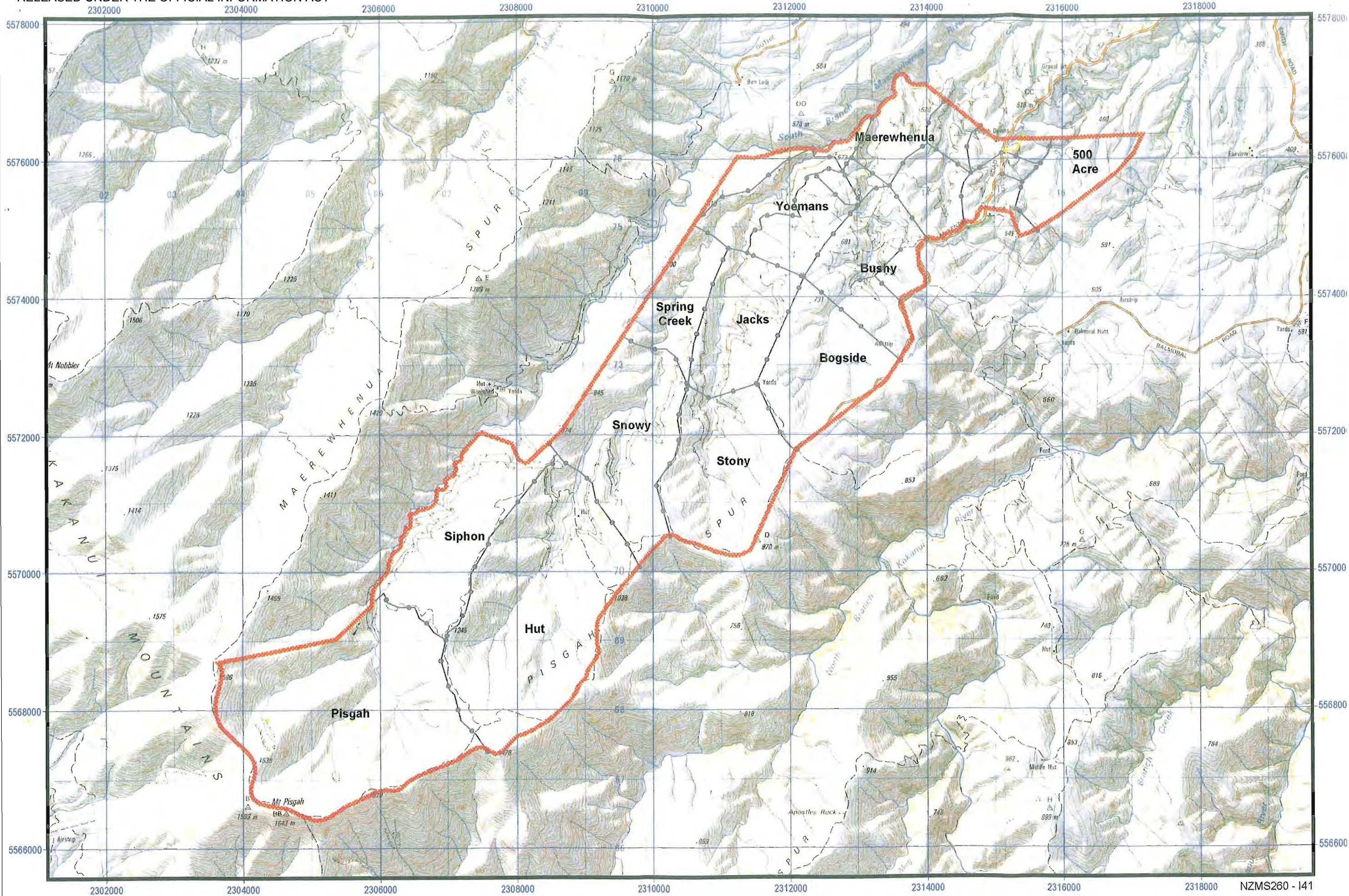




4.2.2 Pisgah Downs Pastoral Lease
Landscape units and significant areas

- Landscape units
- Significant areas





Farm Blocks

Fences

4.2.4 Pisgah Downs Pastoral Lease

Farm Blocks

1000 0 1000 2000 3000 4000 Meters

