

## **Crown Pastoral Land Tenure Review**

**Lease name: PISGAH DOWNS**

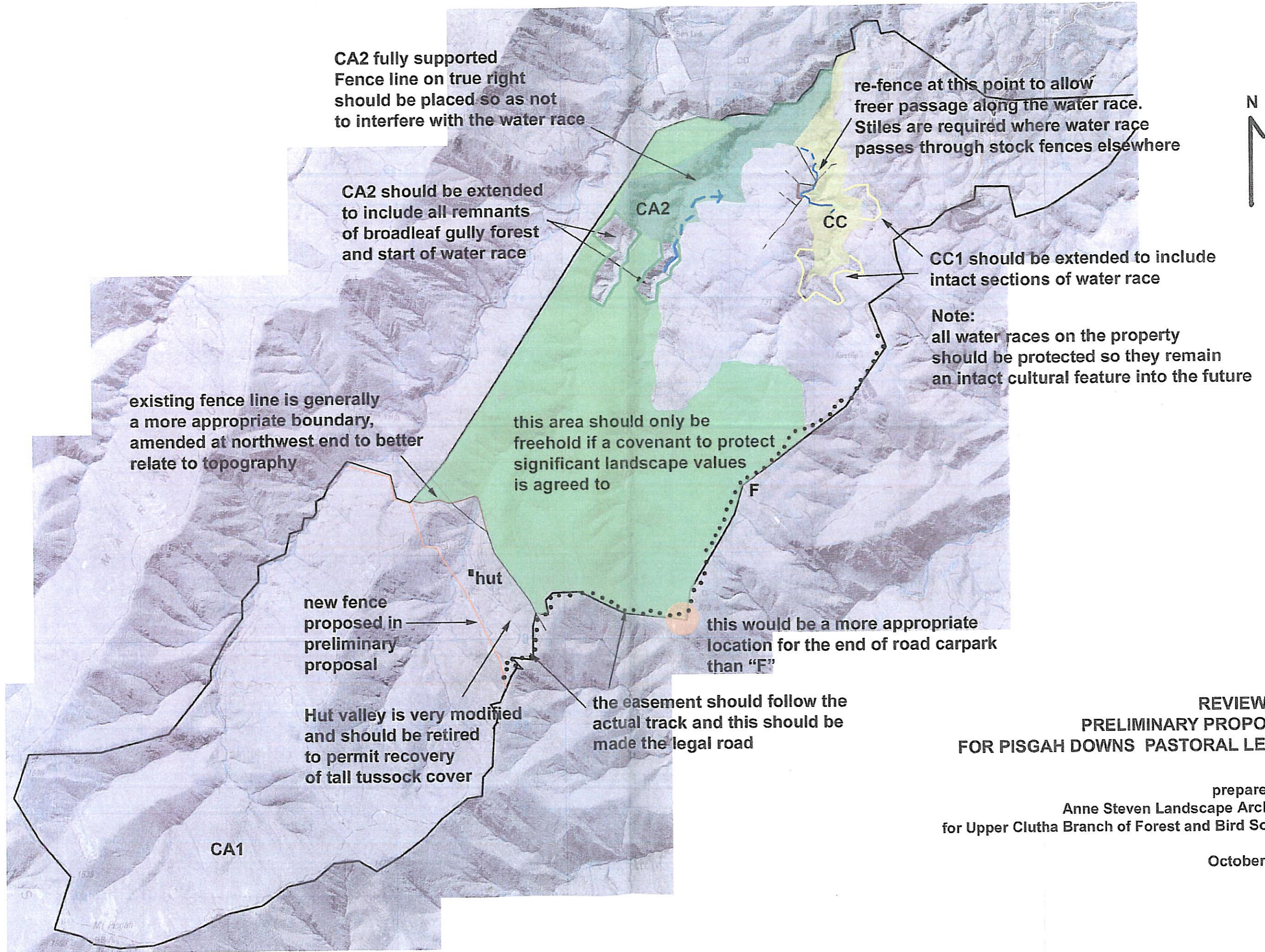
**Lease number: PO 248**

### **Public Submissions - Part 3**

These submissions were received as a result of the public advertising of the Preliminary Proposal for Tenure Review.

**May**

**06**



**REVIEW OF  
PRELIMINARY PROPOSAL  
FOR PISGAH DOWNS PASTORAL LEASE**

prepared by  
Anne Steven Landscape Architect  
for Upper Clutha Branch of Forest and Bird Society

October 2005