

Crown Pastoral Land Tenure Review

Lease name : REES VALLEY

Lease number : PO 311

Conservation Resources Report - Part 2

As part of the process of tenure review, advice on significant inherent values within the pastoral lease is provided by Department of Conservation officials in the form of a conservation resources report. This report is the result of outdoor survey and inspection. It is a key piece of information for the development of a preliminary consultation document.

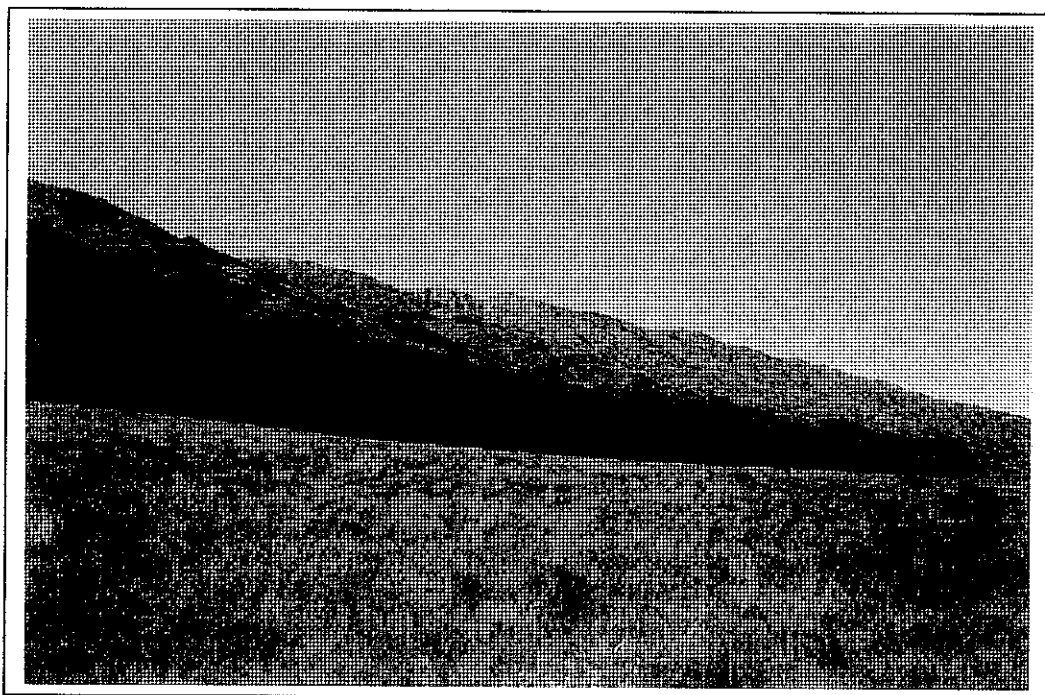
They are released under the Official information Act 1982.

March

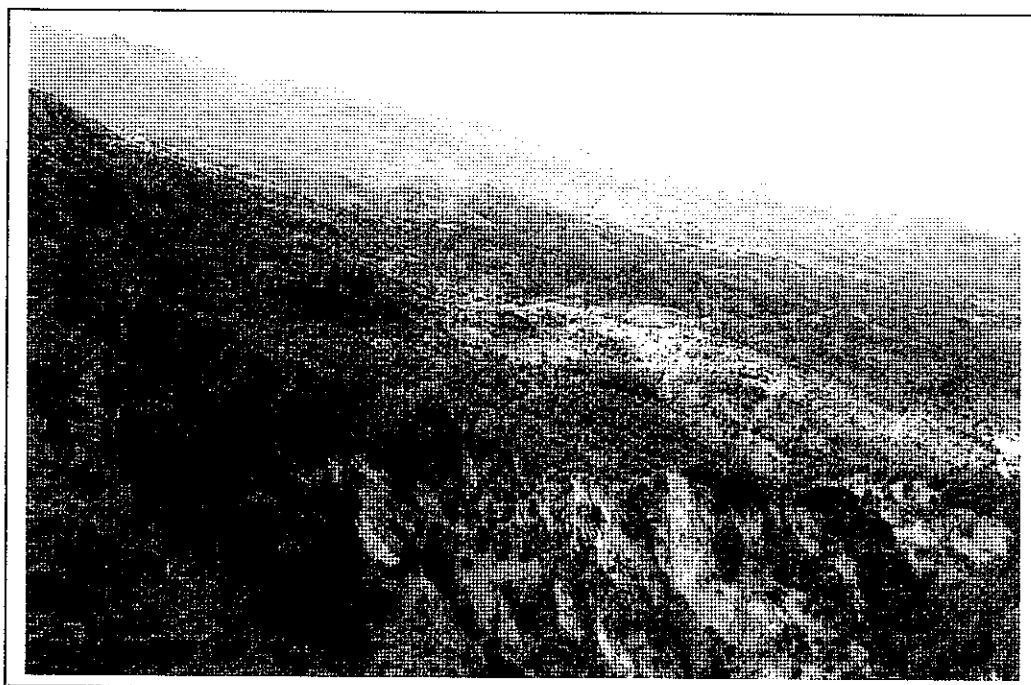
05

APPENDIX 4.3 - PHOTOGRAPHS

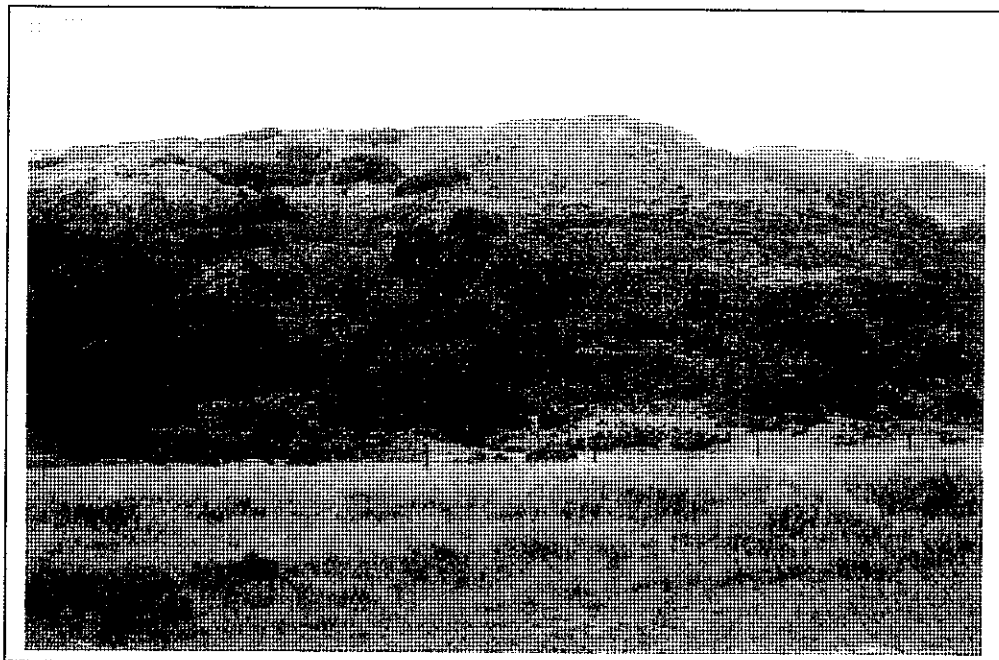
SECTION ONE – THE LOWER FRONT FACES – REES VALLEY



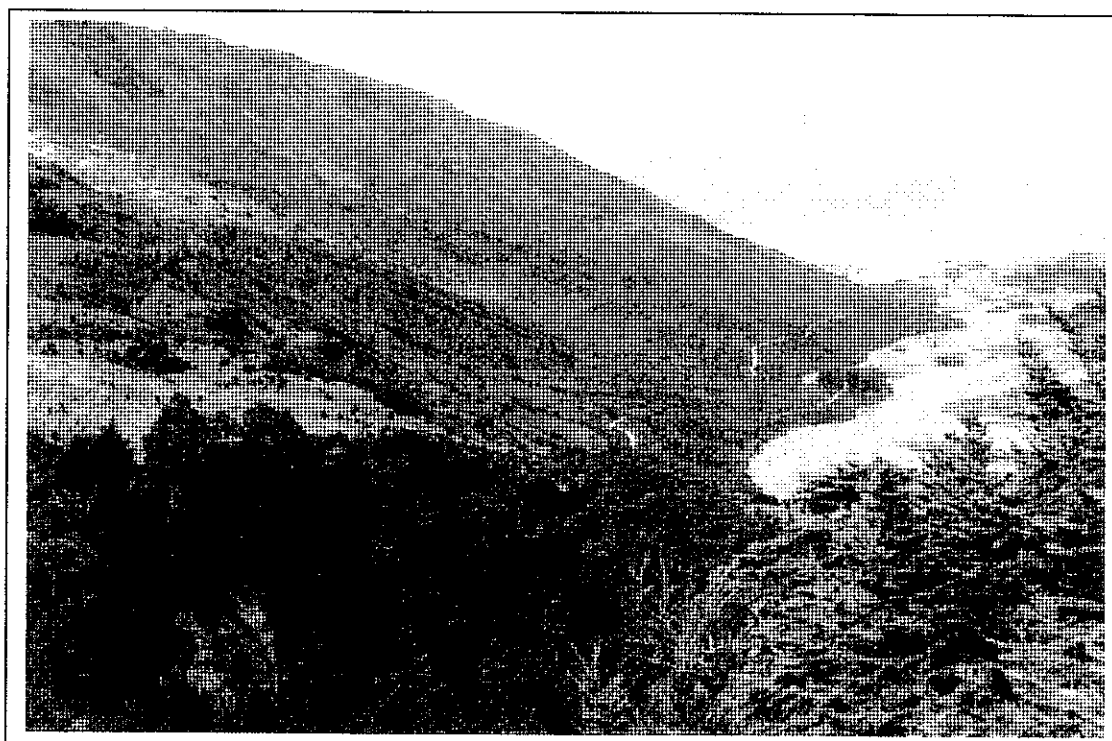
1. Front faces From Bridges from Bridges Creek Flat



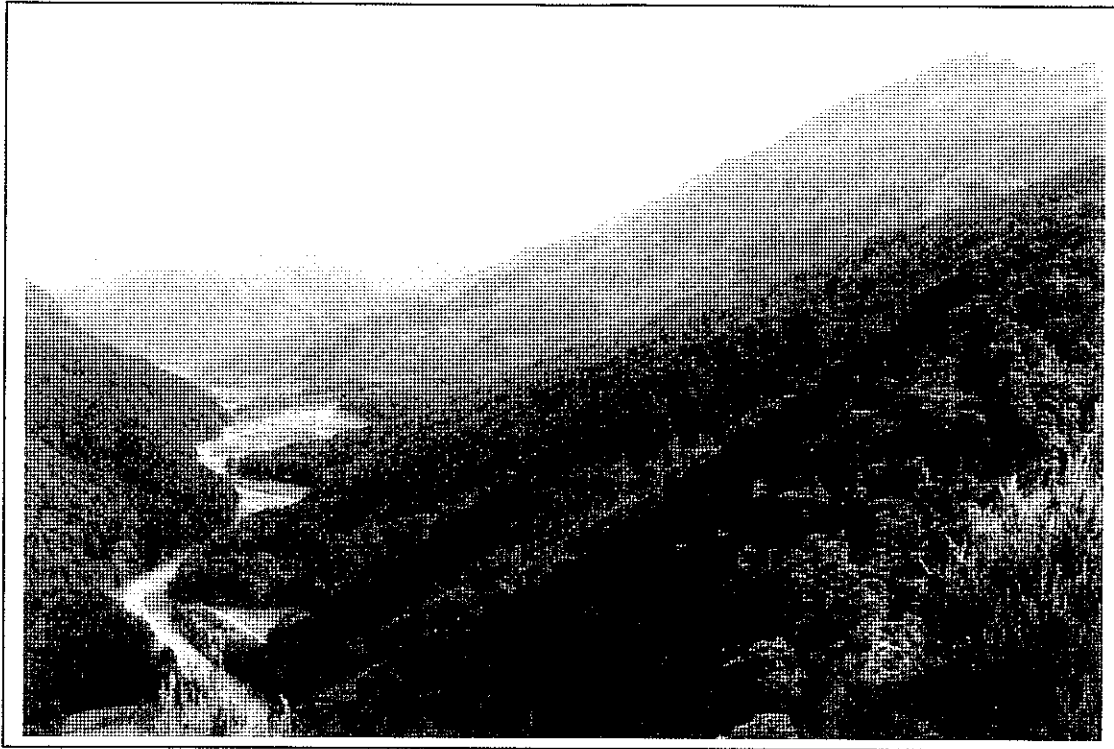
2. Invincible Creek – Reef Spur



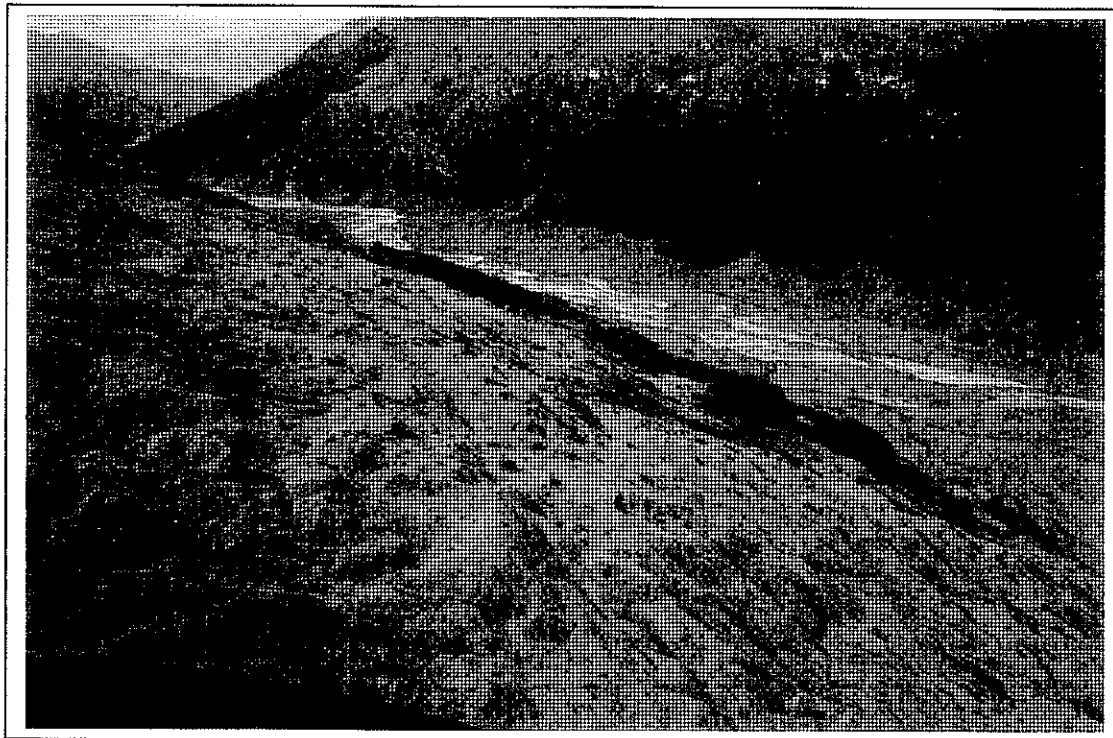
3. Lower Broad Spur



4. Lower Front Faces South of McDougalls Creek

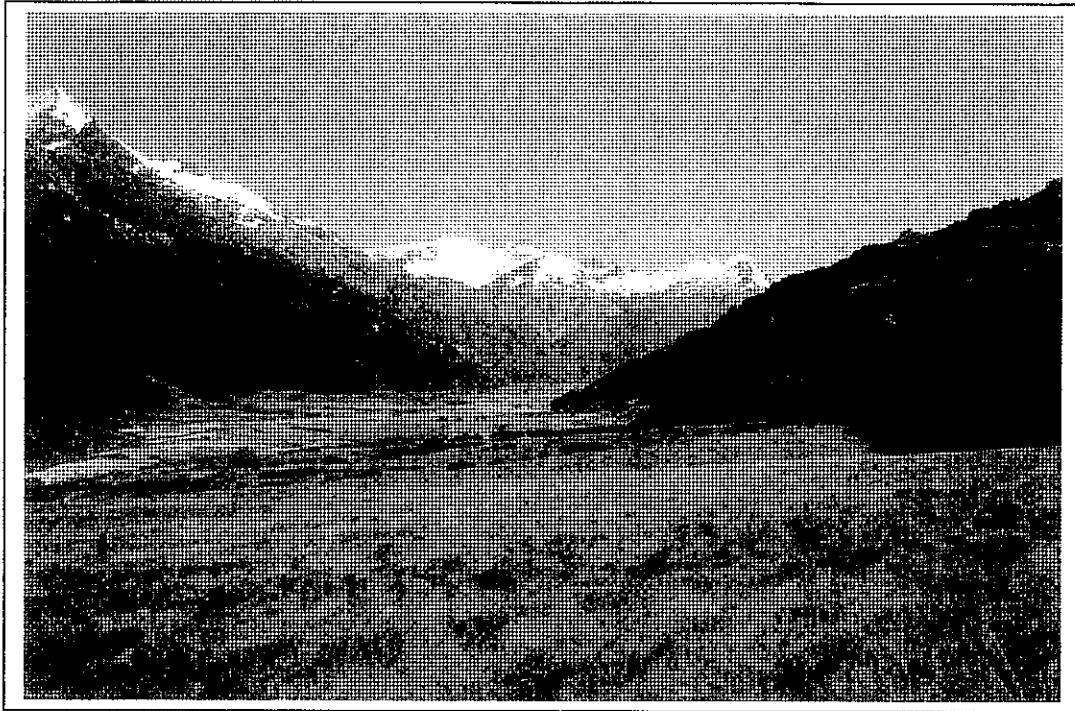


5. Lower Forested Faces South of Muddy Creek



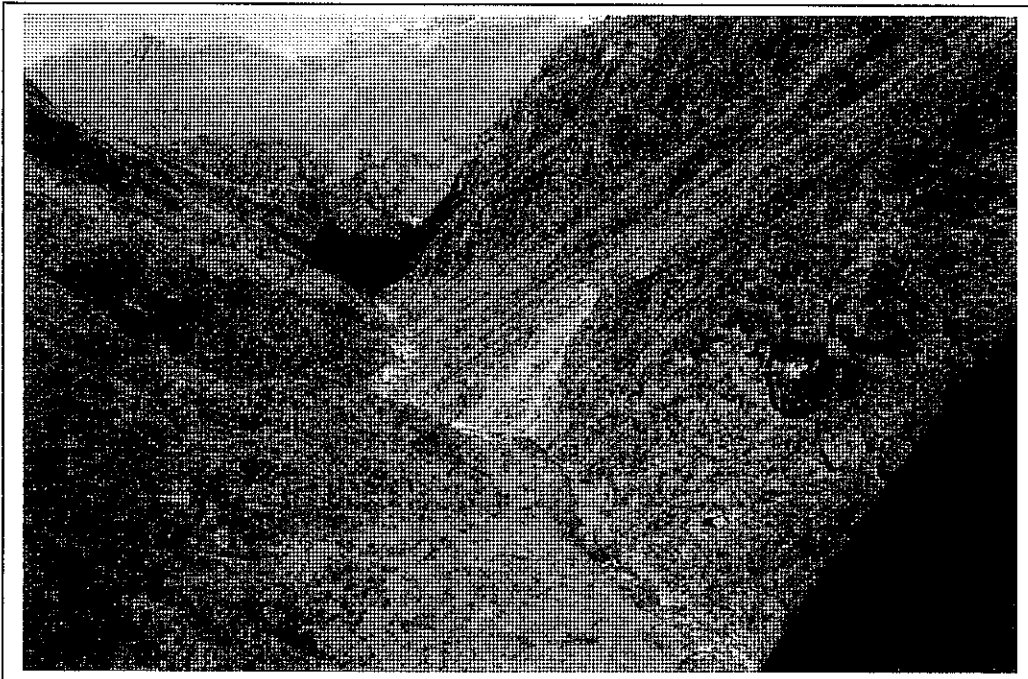
**6. Faces North of Arthurs Creek – Right Hand Side of Pastoral Lease is in
Earnslaw Pastoral Lease**

SECTION TWO – REES VALLEY FLOOR



7. Rees Valley Floor near Bridges Creek – Looking into Pastoral Lease from Freehold Block.

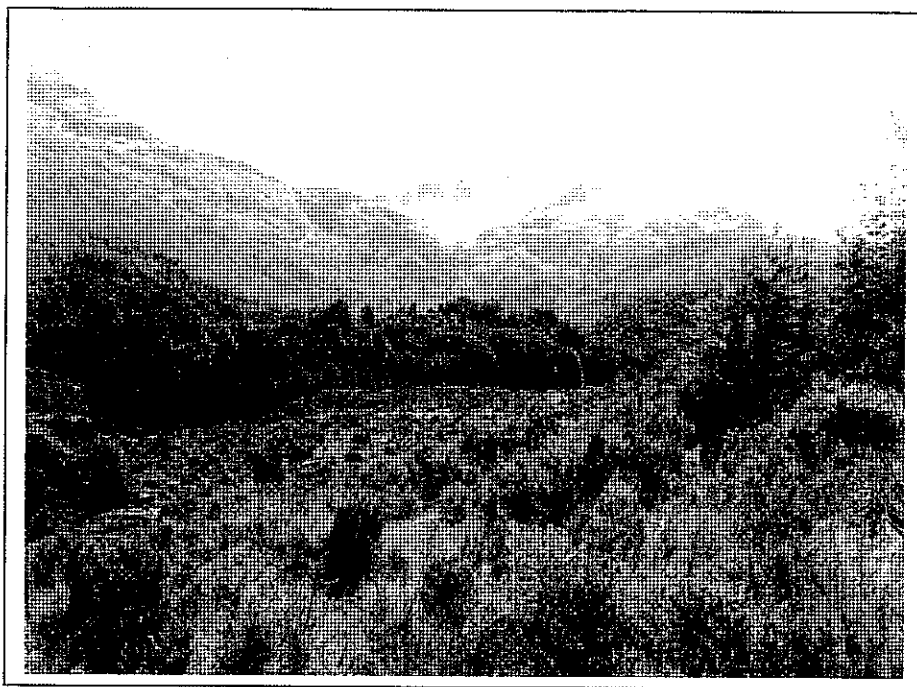
SECTION THREE REES RIVER TRIBUTARIES



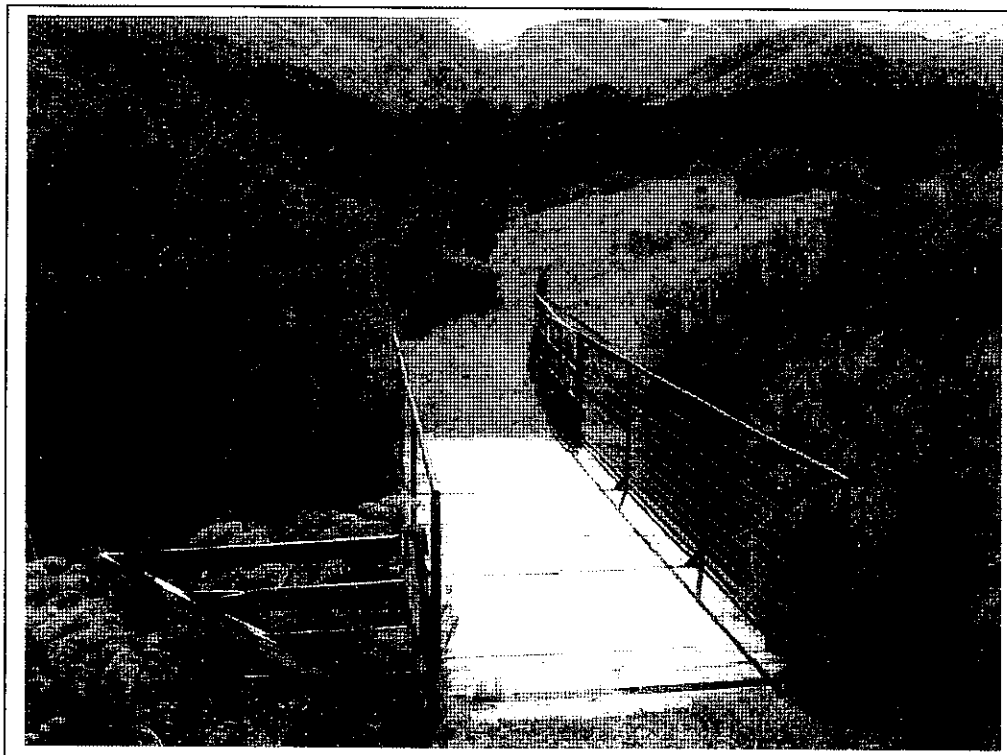
8 Twenty Five Mile Creek



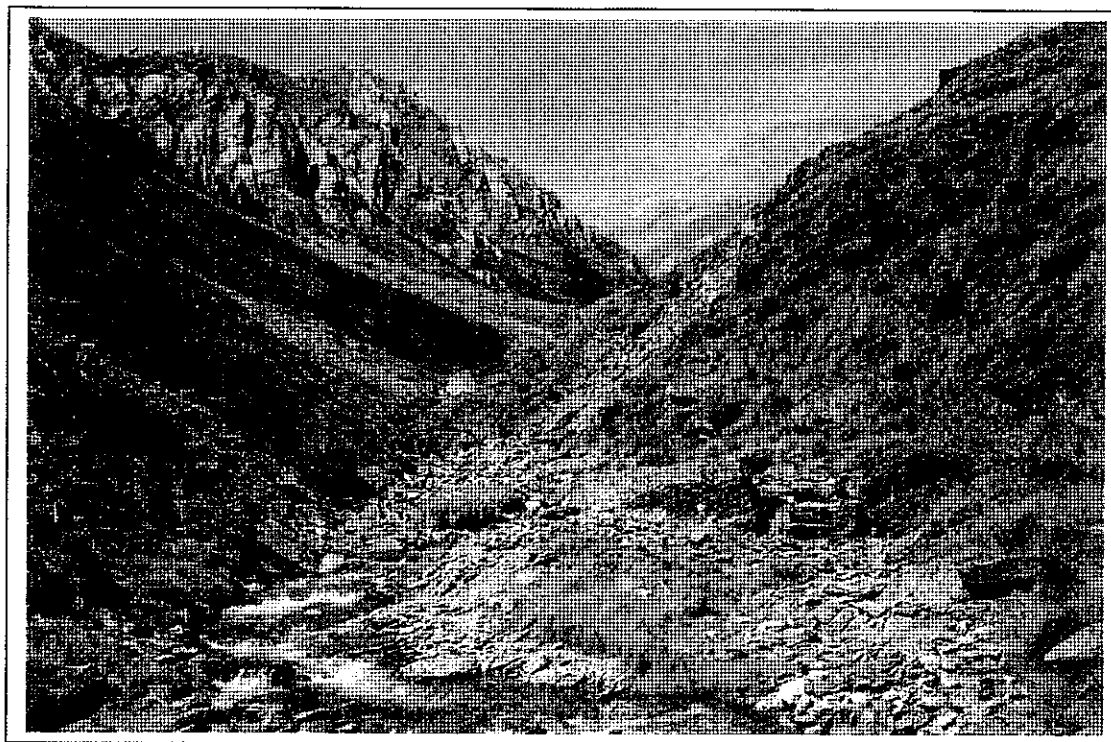
9. Big Devil Hut – Twenty Five Mile Creek – Mt Earnslaw in Background



10 . Lower Twenty Five Mile Creek – Regenerating Shrublands & Forest



11. Bridge Across Lower Devils Creek Deeply Slotted Gorge

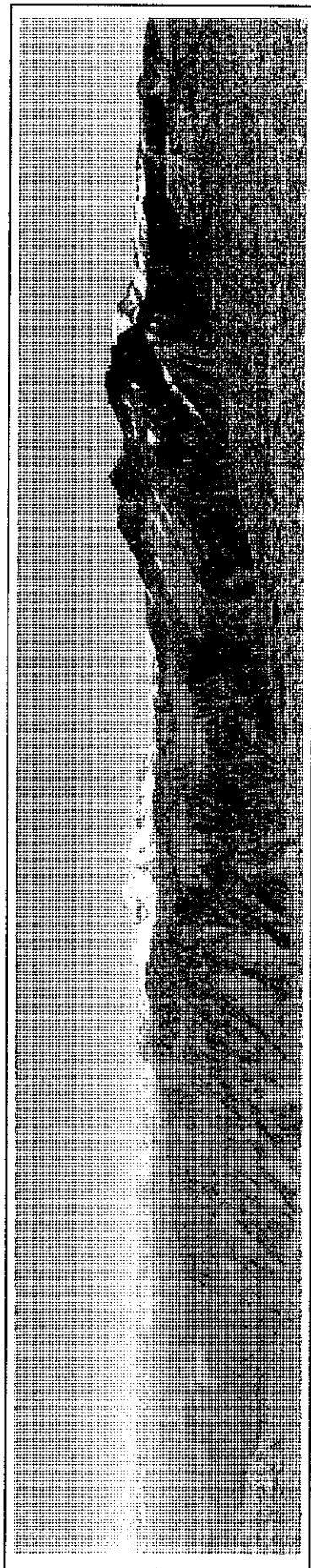


12. Arthurs Creek

"RELEASED UNDER THE OFFICIAL INFORMATION ACT"

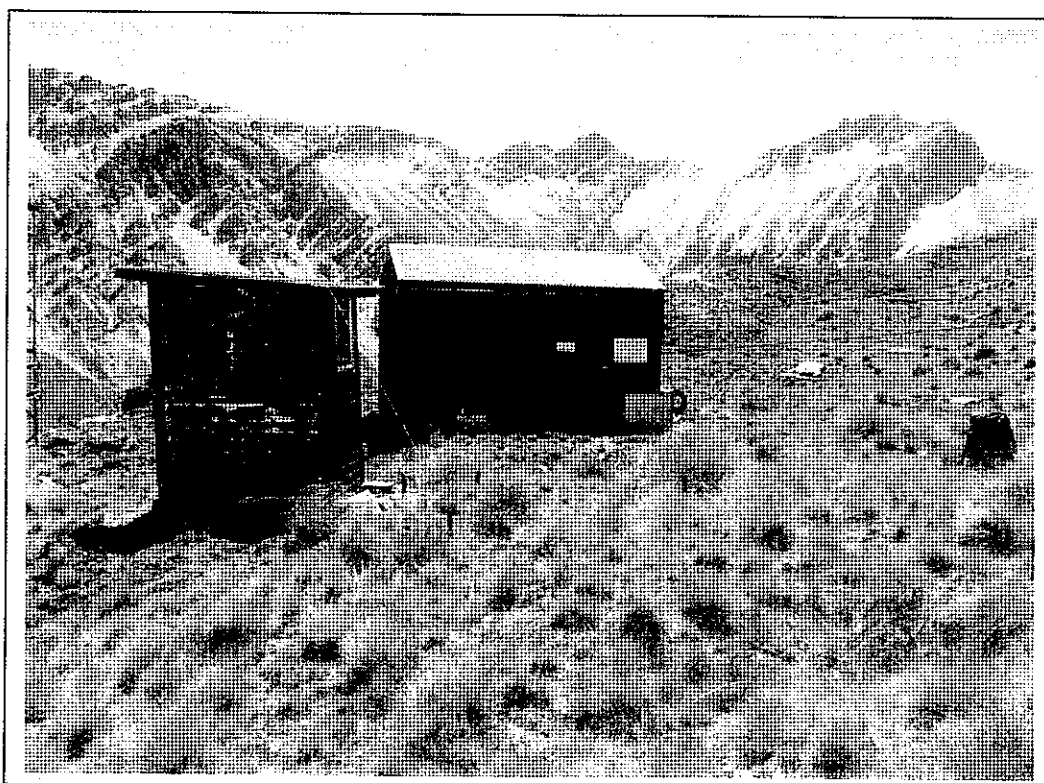
SECTION THREE . RICHARDSON MOUNTAINS – HIGH ALTITUDE

13. Alpine Panorama – Upper Invincible Creek

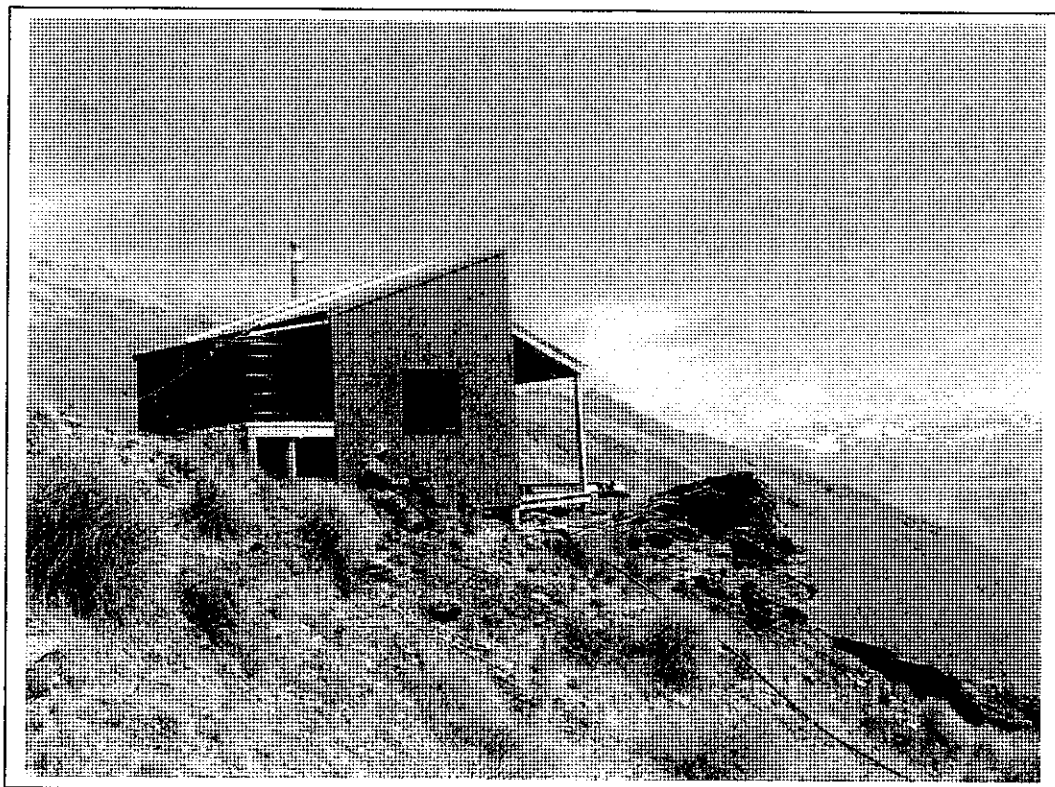




14. Lapith Peak 2280m.

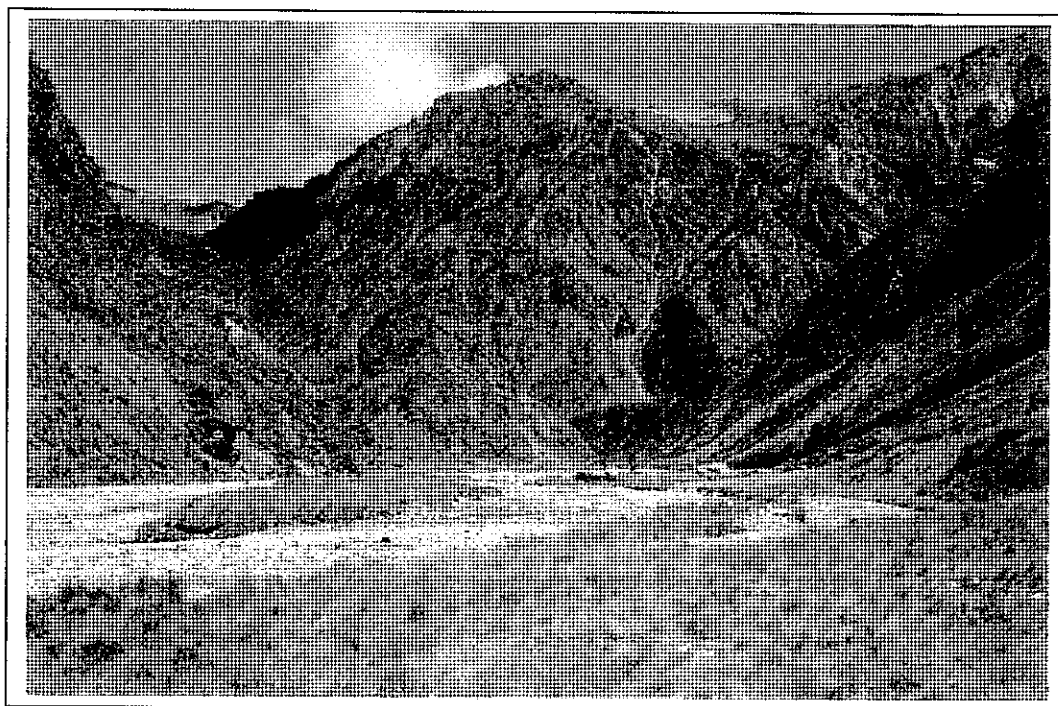


15. Invincible Ski Field Tow Shed/Toilet



16. Invincible Ski Field Accommodation Hut

SECTION FOUR "THE TRIANGLE" – SHOTOVER CATCHMENT



17. Flood Burn. Prince of Wales Flat



20. Moke Gecko at Twenty Five Mile Spur



21. Robin Lower Rees Valley Forest