

Crown Pastoral Land Tenure Review

Lease name : RUGGED RIDGES

Lease number : PO 145

Conservation Resources Report - Part 2

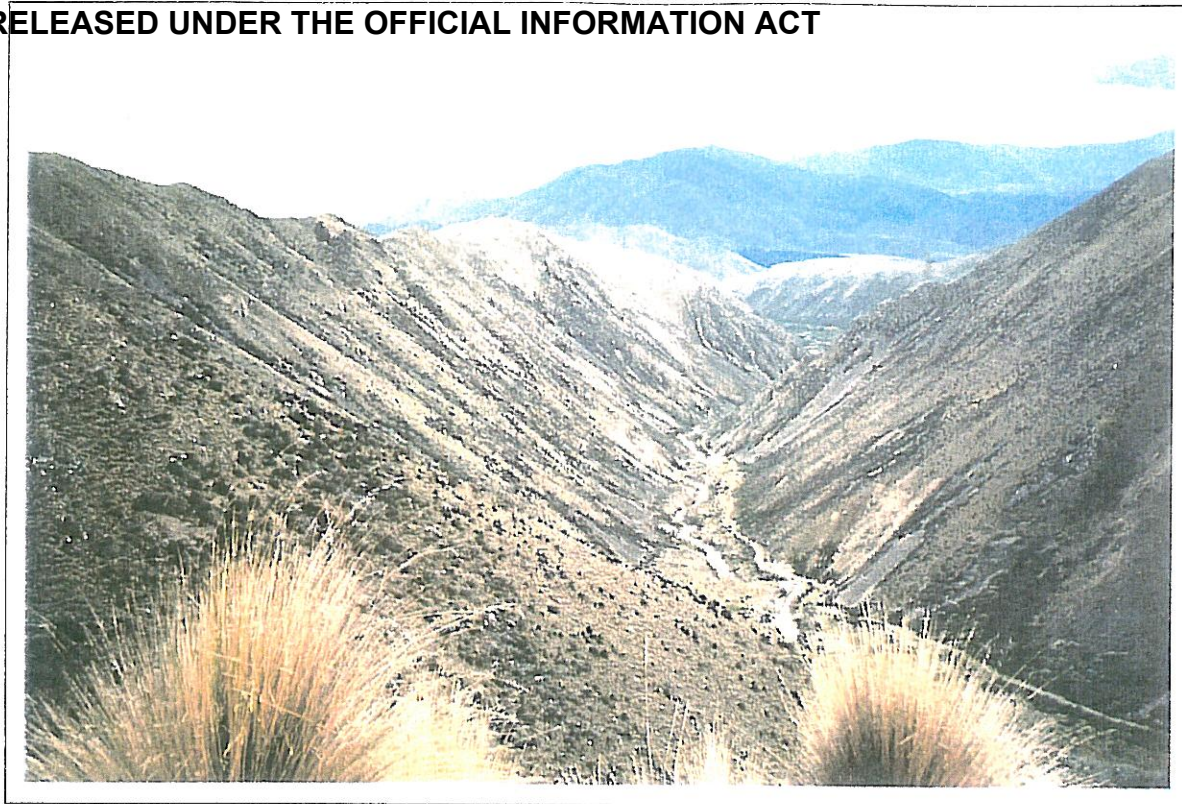
As part of the process of Tenure Review, advice on significant inherent values within the pastoral lease is provided by Department of Conservation officials in the form of a Conservation Resources Report. This report is the result of outdoor survey and inspection. It is a key piece of information for the development of a preliminary consultation document.

Note: Plans which form part of the Conservation Resources Report are published separately.

These documents are all released under the Official information Act 1982.

October

05

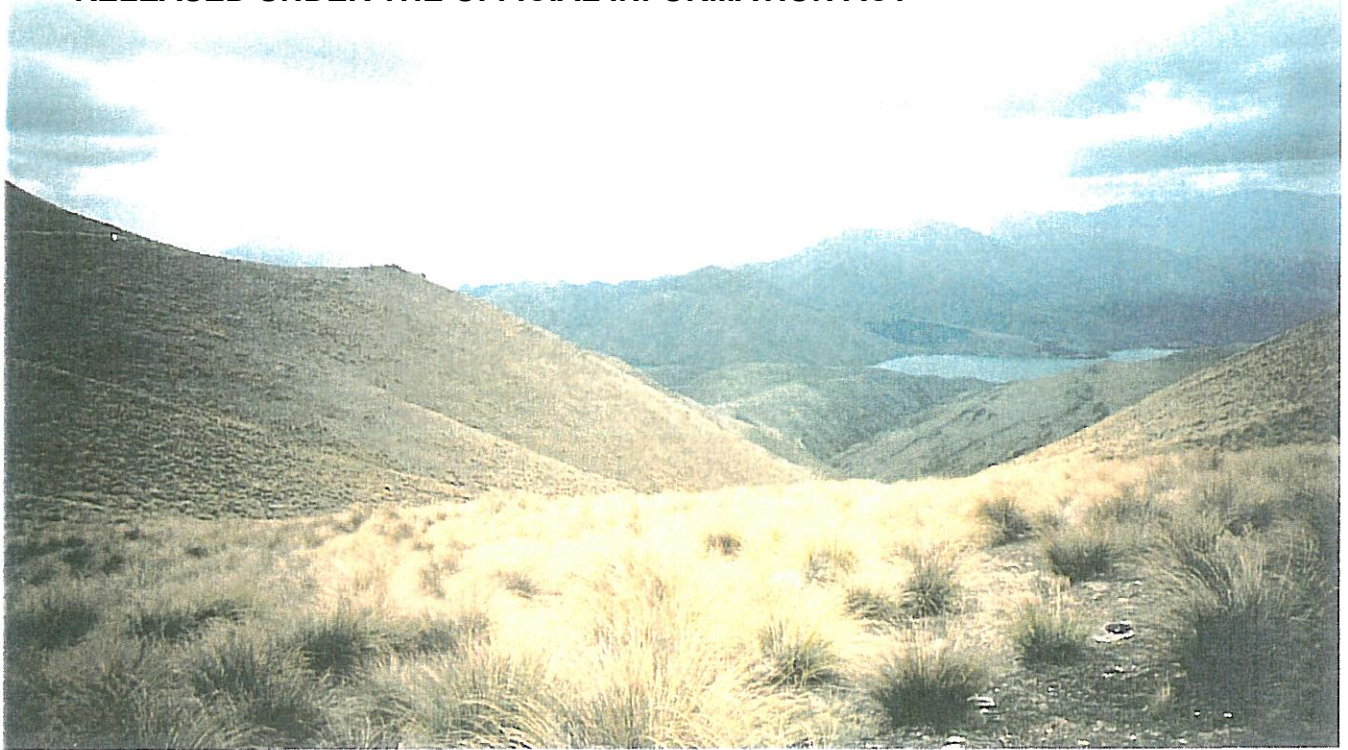


LU3 The mid section of Parsons Rock Creek with only the true right side of the creek being in the property. The vertical bands of the various ground covers are a distinctive feature.



LU3 The upper section of the Parsons Rock Creek gorge that conveys a strong sense of wilderness and remoteness mainly attributable to the lack of "built" elements and the intactness of the native vegetation. A large proportion of this catchment has high landscape values.

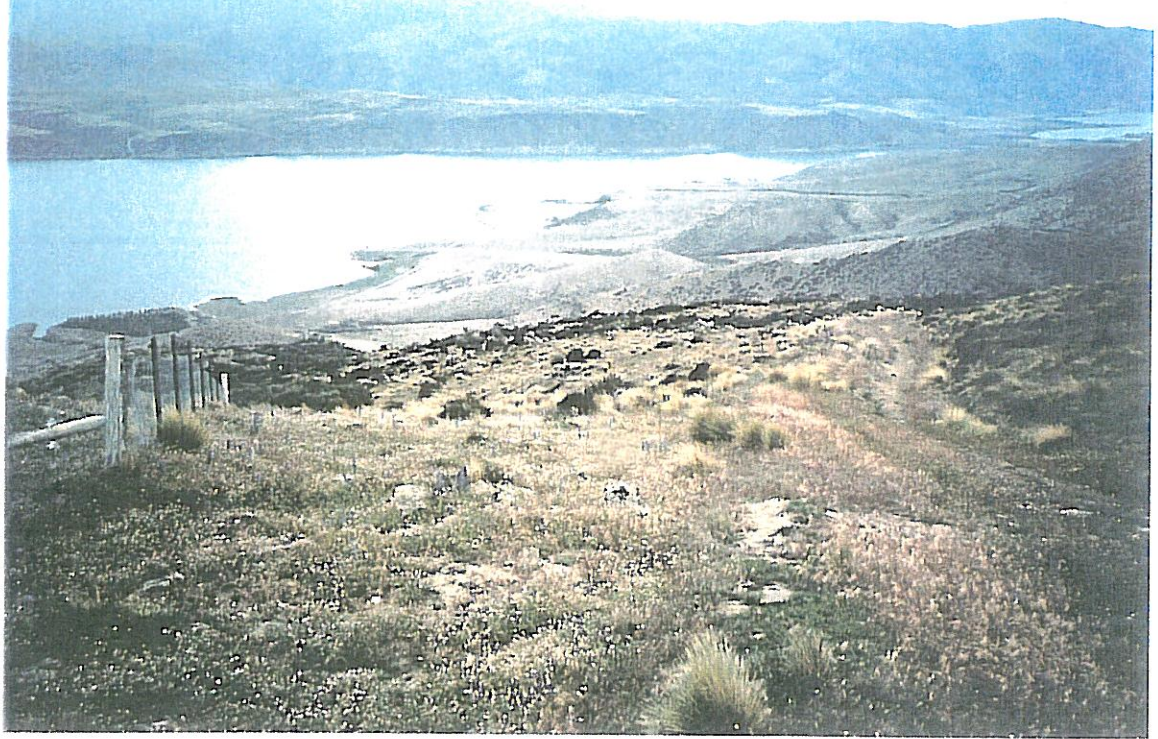
RELEASED UNDER THE OFFICIAL INFORMATION ACT



LU4 The head of Rugged Ridge Creek where the insidious changes from good condition tussock to more depleted ground cover is starkly apparent.



LU4 The mid and lower section of Rugged Ridge Creek where the ground cover is in a fairly degraded state, with the original grasslands now being replaced by either hawkweed and barren ground



LU5 Looking towards the southern end of Lake Aviemore; a large proportion of this unit has been transformed into semi-intensive farmland.



LU5 Looking into the front country of the pastoral lease; on the darker mid slopes there still exists mixed native shrublands and the occasional grove of kowhai. This unit has a high visual resource value.