

## **Crown Pastoral Land Tenure Review**

**Lease name: SHAG VALLEY STATION**

**Lease number : PO 331**

**Plans attaching to the  
Conservation Resources Report**

- Topo/Cadastral Map**
- Landscape Units & Significant Values**

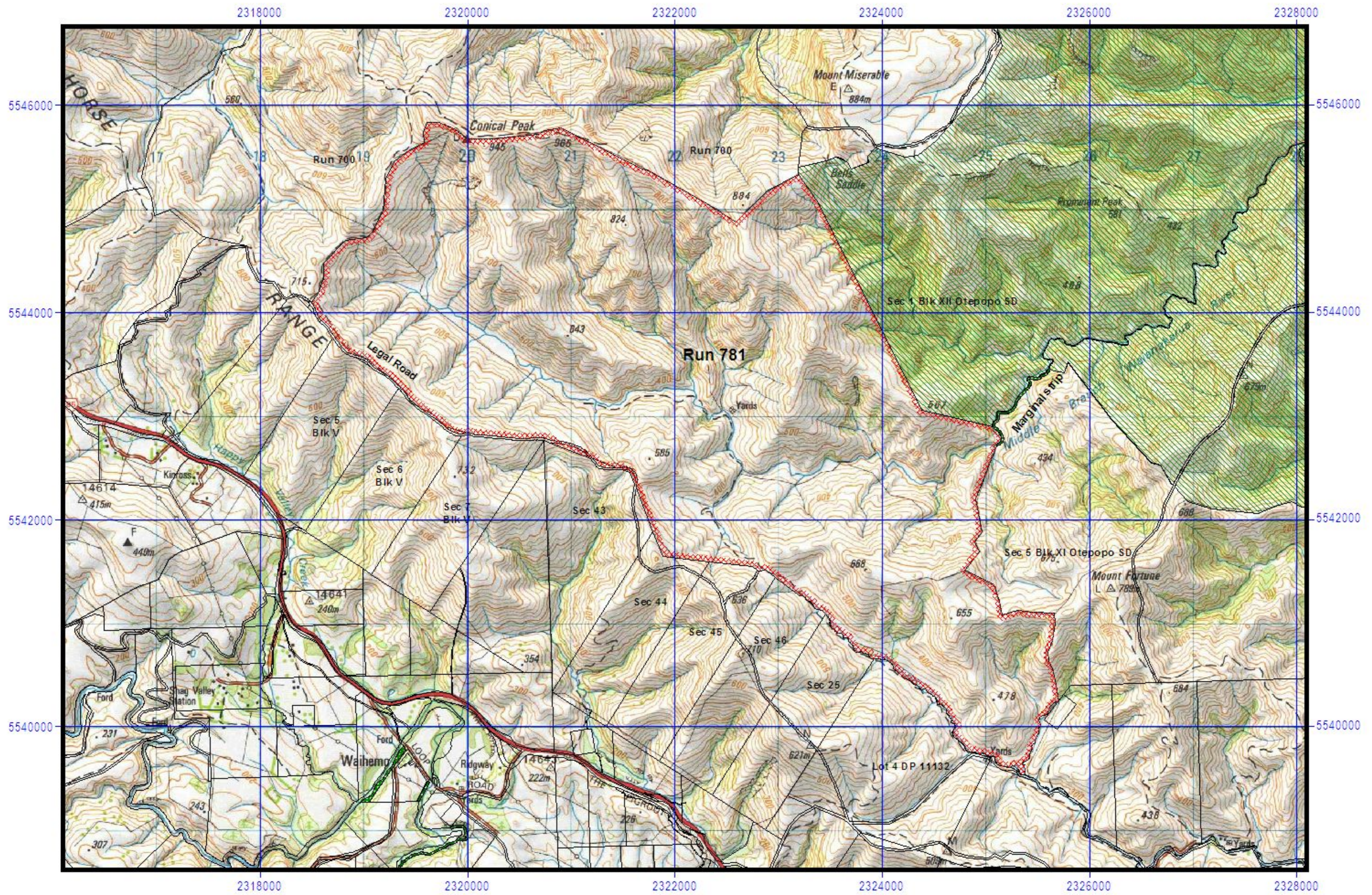
These plans attach to and support the Conservation Resources Report provided by the Department of Conservation.

They are released under the Official information Act 1982.

**March**

**05**





4.2.1 Topographical/ cadastral  
Shag Valley Station Pastoral Lease

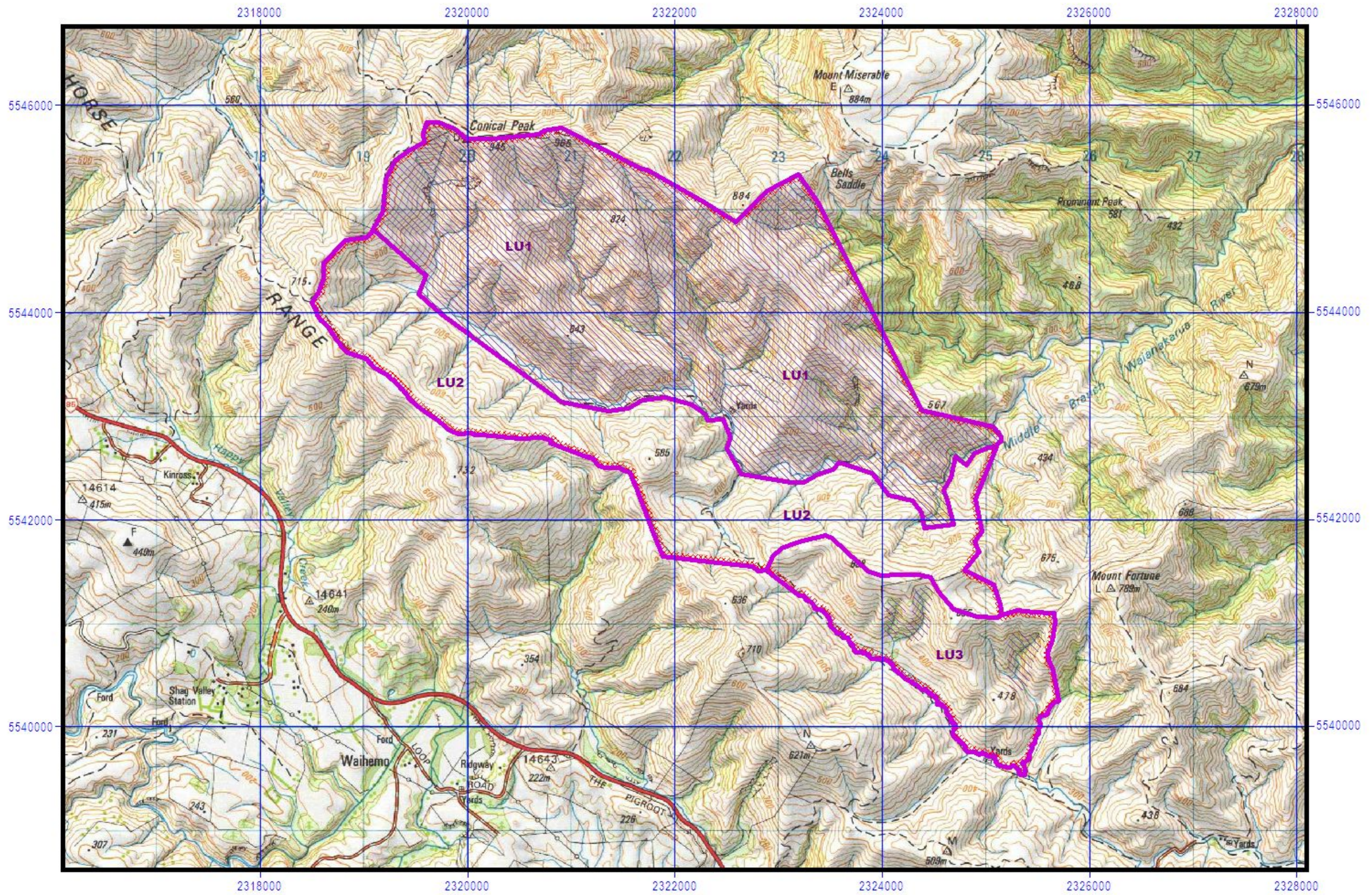
Marginal strips.shp  
Estate.shp





NZMS 260 - I 42








4.2.2 Landscape units and Significant values  
Shag Valley Station Pastoral Lease

 Significant landscape values  
 Landscape unit boundaries

2000 0 2000 Meters



NZMS 260 - I 42

