

Crown Pastoral Land Tenure Review

Lease name: SHAG VALLEY STATION

Lease number : PO 331

**Plans attaching to the Conservation
Resources Report**

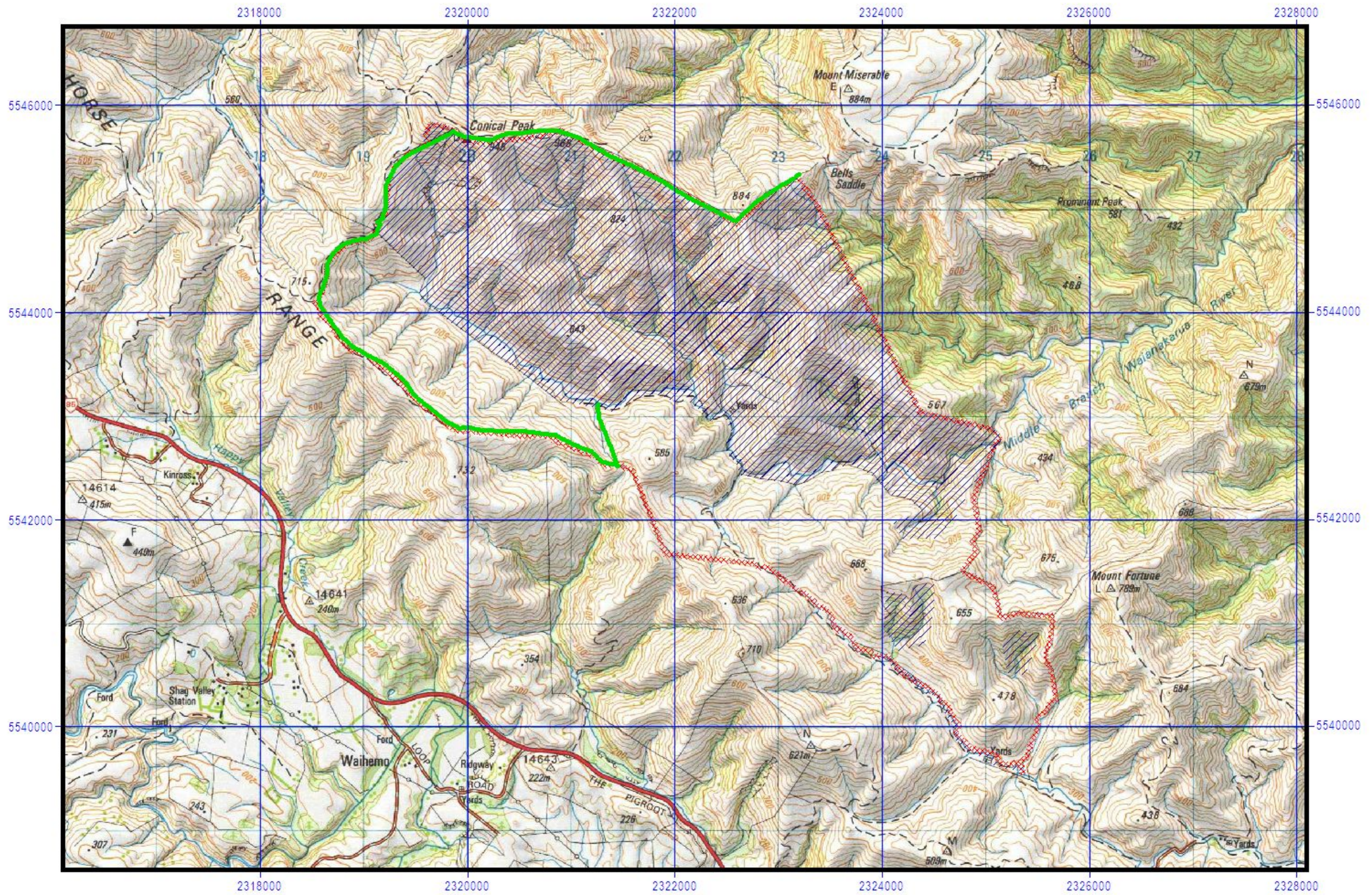
- Ecological/Recreational Values**
- Named Farm Blocks**

These plans attach to and support the Conservation Resources Report provided by the Department of Conservation.



They are released under the Official information Act 1982.

March

05



4.2.3 Values - Ecological/ Recreational
Shag Valley Station Pastoral Lease

 Recreational routes
 Significant ecological resources

2000 0 2000 Meters

NZMS 260 - I 42



