

## **Crown Pastoral Land Tenure Review**

**Lease name : SHENLEY**

**Lease number : PT 026**

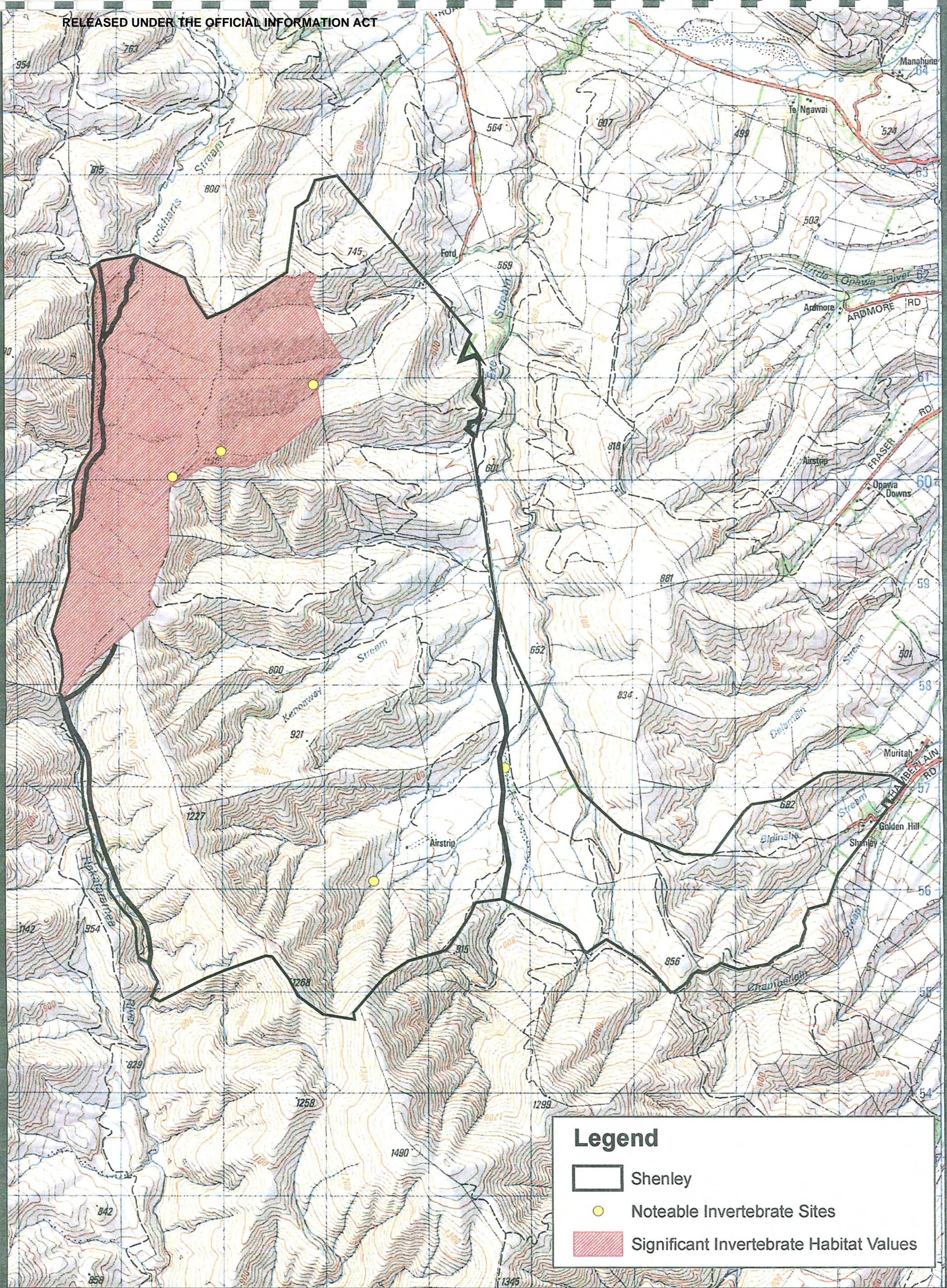
### **Plan attaching to the Conservation Resources Report - Invertebrate Values Map**

The following plan forms page 29 of the Conservation Resources Report provided by the Department of Conservation.



It is released under the Official information Act 1982.

**January**

**09**



**Legend**

-  Shenley
-  Notable Invertebrate Sites
-  Significant Invertebrate Habitat Values

