

Crown Pastoral Land Tenure Review

Lease name : SHINGLEY CREEK

Lease number : PO 034

Conservation Resources Report - Part 3

As part of the process of Tenure Review, advice on significant inherent values within the pastoral lease is provided by Department of Conservation officials in the form of a Conservation Resources Report. This report is the result of outdoor survey and inspection. It is a key piece of information for the development of a preliminary consultation document.

Note: Plans which form part of the Conservation Resources Report are published separately.

These documents are all released under the Official information Act 1982.

May

06

APPENDIX ONE: List of Vascular plants recorded on Shingley Creek PL.
Exotic species denoted with an asterisk (*).

Species	Common name	Plant type
<i>Acaena agnipila</i> *	Australian sheep's burr	Dicot herb
<i>Acaena anserinifolia</i>	Bidibidi	Dicot herb
<i>Acaena caesiiglauca</i>	Bidibidi	Dicot herb
<i>Acaena inermis</i>	Bidibidi	Dicot herb
<i>Achillea millefolium</i> *	Yarrow	Dicot herb
<i>Aciphylla aurea</i>	Golden Spaniard	Dicot herb
<i>Aciphylla scott-thomsonii</i>	Spaniard	Dicot herb
<i>Agrostis capillaris</i> *	Browntop	Grass
<i>Anaphalioides bellidioides</i>		Dicot herb
<i>Anisotome flexuosa</i>		Dicot herb
<i>Anthoxanthum odoratum</i> *	Sweet vernal	Grass
<i>Anthriscus caucalis</i> *	Beaked parsley	Dicot herb
<i>Asplenium richardii</i>		Fern
<i>Astelia nervosa</i>		Tussock herb
<i>Blechnum novae-zelandiae</i>	Kiokio	Fern
<i>Blechnum penna-marina</i>		Fern
<i>Bromus hordeaceus</i> *	Soft brome	Grass
<i>Bulbinella angustifolia</i>	Maori onion	Monocot herb
<i>Carduus nutans</i> *	Nodding thistle	Dicot herb
<i>Carex breviculmis</i>		Sedge
<i>Carex coriacea</i>	Rautahi	Sedge
<i>Carex secta</i>	Purei	Tussock sedge
<i>Carmichaelia crassicaule</i>	Coral broom	Shrub
<i>Carmichaelia petriei</i>	Native broom	Shrub
<i>Celmisia densiflora</i>		Dicot herb
<i>Celmisia gracilentia</i>		Dicot herb
<i>Celmisia lyallii</i>	False Spaniard	Dicot herb
<i>Cerastium fontanum</i> *	Mouse-eared chickweed	Dicot herb
<i>Cheilanthes sieberi</i>		Fern
<i>Chionochloa rigida</i>	Narrow-leaved snow tussock	Grass
<i>Cirsium arvense</i> *	Californian thistle	Dicot herb
<i>Cirsium vulgare</i> *	Scotch thistle	Dicot herb
<i>Clematis marata</i>		Vine
<i>Coprosma parviflora</i> var. <i>dumosa</i>		Shrub
<i>Coprosma propinqua</i>	Mikimiki	Shrub
<i>Coprosma rugosa</i>		Shrub

Species	Common name	Plant type
<i>Coriaria plumosa</i>	Tutu	Shrub
<i>Coriaria sarmentosa</i>	Tutu	Shrub
<i>Cortaderia richardii</i>	Toetoe	Tussock grass
<i>Crepis capillaris</i> *	Hawksbeard	Dicot herb
<i>Critesion murinum</i> *	Barley grass	Grass
<i>Cynosurus cristatus</i> *	Crested dogstail	Grass
<i>Cytisus scoparius</i> *	Broom	Shrub
<i>Dactylis glomerata</i> *	Cocksfoot	Grass
<i>Dichelachne crinita</i>		Grass
<i>Digitalis purpurea</i> *	Foxglove	Dicot herb
<i>Discaria toumatou</i>	Matagouri	Shrub
<i>Dracophyllum uniflorum</i>	Turpentine shrub	Shrub
<i>Epilobium brunnescens</i>		Dicot herb
<i>Festuca novae-zelandiae</i>	Hard tussock	Grass
<i>Galium aparine</i> *	Cleavers	Dicot herb
<i>Gaultheria crassa</i>		Shrub
<i>Gaultheria depressa</i>		Sub-shrub
<i>Geranium microphyllum</i>		Dicot herb
<i>Geranium molle</i> *	Dove's foot cranesbill	Dicot herb
<i>Haloragis depressa</i>		Dicot herb
<i>Hebe buchananii</i>		Shrub
<i>Hebe lycopodioides</i>		Shrub
<i>Hebe rakaiensis</i>		Shrub
<i>Hebe salicifolia</i>	Koromiko	Shrub
<i>Helichrysum filicaule</i>		Dicot herb
<i>Hieracium lepidulum</i> *	Tussock hawkweed	Dicot herb
<i>Hieracium pilosella</i> *	Mouse-eared hawkweed	Dicot herb
<i>Holcus lanatus</i> *	Yorkshire fog	Grass
<i>Hypochoeris radicata</i> *	Catsear	Dicot herb
<i>Hypolepis millefolium</i>		Fern
<i>Juncus articulatus</i> *	Jointed rush	Rush
<i>Juncus bufonius</i> *	Toad rush	Rush
<i>Juncus distegus</i>		Rush
<i>Juncus effusus</i> *	Soft rush	Rush
<i>Juncus gregiflorus</i>		Rush
<i>Kelleria dieffenbachii</i>		Dicot herb
<i>Leucopogon fraseri</i>	Patotara	Shrub
<i>Linum catharticum</i>		Dicot herb
<i>Luzula</i> sp.		Sedge
<i>Lycopodium fastigiatum</i>		Fern
<i>Meliccytus alpinus</i>	Porcupine shrub	Shrub
<i>Microtis unifolia</i>		Orchid

Species	Common name	Plant type
<i>Mimulus moschatus</i> *	Musk	Dicot herb
<i>Muehlenbeckia axillaris</i>		Vine
<i>Muehlenbeckia complexa</i>	Pohuehue	Vine
<i>Myosotis arvensis</i> *	Forget-me-not	Dicot herb
<i>Myrsine nummularia</i>		Shrub
<i>Navarretia squarrosa</i> *	Tarweed	Dicot herb
<i>Olearia bullata</i>		Shrub
<i>Oreomyrrhis colensoi</i>		Dicot herb
<i>Oxalis magellanica</i>		Dicot herb
<i>Ozothamnus leptophyllus</i>	Tauhinu	Shrub
<i>Pentachondra pumila</i>		Sub-shrub
<i>Pernettya macrostigma</i>		Subshrub
<i>Phormium cookianum</i>	Mountain flax	Tussock herb
<i>Pimelea pseudolyallii</i>		Shrub
<i>Pinus radiata</i>	Radiata pine	Tree
<i>Poa cita</i>	Silver tussock	Grass
<i>Poa colensoi</i>	Blue tussock	Grass
<i>Polystichum vestitum</i>	Prickly shield fern	Fern
<i>Ranunculus reflexus</i>		Dicot herb
<i>Ranunculus repens</i> *	Creeping buttercup	Dicot herb
<i>Raoulia subsericea</i>		Dicot herb
<i>Raoulia tenuicaulis</i>		Dicot herb
<i>Rosa rubiginosa</i> *	Briar	Shrub
<i>Rubus schmidelioides</i>	Lawyer	Vine
<i>Rumex acetosella</i> *	Sheep's sorrel	Dicot herb
<i>Rumex crispus</i> *	Curly dock	Dicot herb
<i>Rumex obtusifolius</i> *	Dock	Dicot herb
<i>Rytidosperma gracile</i>	Danthonia	Grass
<i>Rytidosperma pumila</i>		Grass
<i>Sagina procumbens</i> *	Pearlwort	Dicot herb
<i>Schoenus pauciflorus</i>		Sedge
<i>Sophora microphylla</i>	Kowhai	Tree
<i>Stellaria alsine</i> *	Bog stitchwort	Dicot herb
<i>Taraxacum officinale</i> *	Dandelion	Dicot herb
<i>Thelymitra</i> sp.	Sun orchid	Monocot herb
<i>Trifolium dubium</i> *	Suckling clover	Dicot herb
<i>Trifolium hybridum</i> *	Alsike clover	Dicot herb
<i>Trifolium pratense</i> *	Red clover	Dicot herb
<i>Trifolium repens</i> *	White clover	Dicot herb
<i>Verbascum thapsus</i> *	Woolly mullein	Dicot herb
<i>Wahlenbergia albomarginata</i>	Harebell	Dicot herb

**APPENDIX TWO: Royal Forest and Bird Protection Society of New
Zealand Incorporated – Submission**

26

ROYAL FOREST AND BIRD PROTECTION SOCIETY OF NEW ZEALAND INCORPORATED

Upper Clutha Branch
PO Box 38
LAKE HAWEA

28th June 2003

Mr Tony Perrett
Manager
Tenure Review Programme
Department of Conservation
77 Lower Stuart Street
DUNEDIN

INFORMATION
POLICY
- 1 JUL 2003
RECEIVED

CONS	
A.M.	
C.R.M.	
B.S.M.	
T.S.M.	
H.R.A.	
H.C.T.R.M.	Bruce
K.A.M.	
OTHER	

Dear Tony

SHINGLY CREEK – TENURE REVIEW REPORT

This property was discussed at the Non Government Organisation early warning meeting held in Alexandra on 19th September 2002. It was again discussed at the NGOs meeting in Alexandra on 22nd May 2003.

We carried out an inspection of the property in conjunction with the Federated Mountain Clubs of New Zealand Incorporated, and with the permission of the occupant: to whom we extend our thanks.

We would like to draw to your attention to some matters and issues regarding this tenure review. We would be pleased if you would give them due consideration when you make your department's report to the Commissioner of Crown Lands as required under **Section 26 Consultation (3) – Part 2 of the Crown Pastoral Lands Act 1998.**

We would also like to thank you for the opportunity to have this input at this stage of the process.

1. GENERAL;

This run lies just to the east of the Pig Root Road (SH 85) summit, and west of the Kakanui Mountains, its creeks and streams draining into the Shag river. It's northeast and eastern boundaries backing on to the watershed of the Kakanui and Waianakura river systems respectively.

The land above about 700/800masl. is still carrying tall tussock, subject to aspect.

The property is at the western end of a legal roading system which will play a major part with regard to access to a new conservation area yet to be created on the extensive uplands contained in Mt Dasher, (as yet not in the tenure review process: but we must assume it will be eventually) – and The Dasher, which is in the process

It will be a very important conservation area in that it is relatively close to the East Coast of the south island and enjoys a different climate to other parts of the Otago mountain system. Subsequently it supports a different and more varied type of vegetation. The climate around trig B and further north to Trig C, on the Mt Dasher/The Dasher boundary is wetter. There are many days when this country and the plateau in and around Mt Dasher itself, are under fog.

This southern end of the Kakanui Mountains with both with its climate and its geological formation give the area unusual and outstanding landscape values. These are yet to be made known and appreciated.

-2-

2. CONSERVATION VALUES:

These lie in the headwaters of Siberia Creek, between spot heights .1128 and .1314 on the plan. The darker lying country beneath .1128 on the Kakanui Mountain Range watershed still carries comparatively good snow tussock. On the sunnier land below spot heights .1314 and .1140 the tussock is somewhat sparser, but well worth preserving. The stream edges towards the head of Siberia Creek contain woody shrubs of value. The basin we describe could and should be fenced off, and returned to the Crown – this is shown green on the attached plan.

The land below this line is modified and could be freed from managerial restraints, if it is ecologically sustainable, and disposed of to the holder – see photo # (1)

There are high conservation values in the vegetation in the upper north eastern part of the Siberia Creek catchment, just below .1314 where the Shingley Creek boundaries Mt Dasher in the north east and The Dasher in the east – see photo # (2) This area contains a variety of alpine plants not seen at such a low altitude elsewhere in Otago.

3. ACCESS:

Taking into consideration the points mentioned above and due to it being on the Pig Root road access is an important issue on this property. There is already a legal road which in parts will be in line with the present track on the ridge going up to Trig B. This then goes north and out to the lower country of North Otago through Mt Dasher. Or to the east through The Dasher.

It would be doubtful if the road/track which has been formed is on the surveyed legal road at many points – see photo # (2) This can be remedied through the preliminary proposal, when the legal road can be re-aligned with the formed road.

There will be a need for a suitable car-park well off SH85, preferably at the foot of the hill. A site for this should not be too difficult to locate.

It will also be necessary to lay off a marginal strip up Siberia Creek as part of the tenure review process.

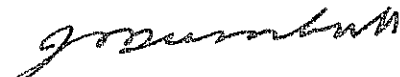
Attached is our plan of the property showing the salient points.

Attached photo # (1) View taken from Trig B – the road on the ridge in the middle foreground is on Mt Dasher. This ridge is the Kakanui watershed and the boundary between Mt Dasher and Shingley Creek. The creek running down the valley is the Siberia Creek. The slope under cloud on the right is below spot height .1128.

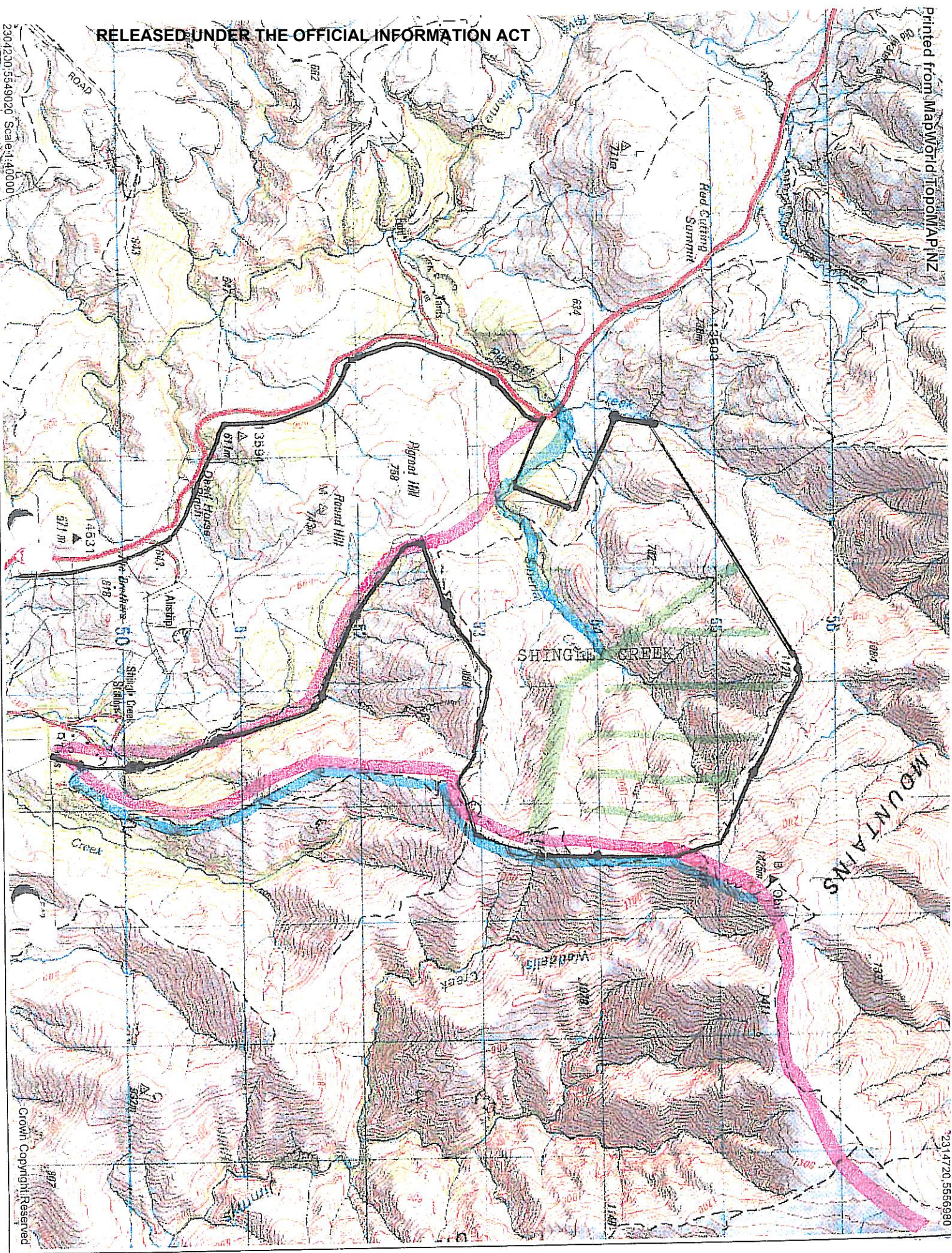
Attached photo # (2) View taken from just north of spot height .1314 The fence and road is on the Mt Dasher/The Dasher boundary. We would doubt if the road were on the legal alignment. The country in the vicinity of this point is rich in alpine plants.

We thank you

Yours faithfully



J.L. Turnbull
For Upper Clutha Branch Forest and Bird



Access required



Legal Road



Conservation Area

