



Land Information  
New Zealand  
*Toitū te whenua*

## Crown Pastoral Land Tenure Review

Lease name : MANUKA POINT

Lease number : PC 053

## Substantive Proposal Designations Plans

A Designations Plan forms part of the Tenure Review Substantive Proposal. The attached plan is a copy of the Designations Plan included in the Substantive Proposal for the above review. The Substantive Proposal has been accepted by the Leaseholder.

A summary of the Substantive Proposal is available as part of a notice of acceptance document lodged for registration against the Landonline computer register of the leasehold Certificate of Title being **OT386/130**. The Notice of Acceptance is a public document searchable by licensed remote access to Landonline.

The report attached is released under the Official Information Act 1982.

June

14



See Sheet 2

**Pc 053 MANUKA POINT TENURE REVIEW  
SUBSTANTIVE PROPOSAL DESIGNATIONS**

Pastoral lease land to be restored to or retained in Crown control under the Land Act 1948, "CL".

Pastoral lease land to be restored to or retained in Crown control as conservation area "CA1" and "CA2", subject to a grazing concession "GC1" & "GC2" and a tourism activities concession

**Easements**  
 Vehicles for public access and vehicles for Minister of Conservation management purposes easement in gross "a-a1-a2", "b2-b3", "b-b1", "f-g-h" & "h1-i-j". (See sheets 3 and 4 for detail)

**Fences**  
 New fences marked "P-P1-J", "Q-Q1", "R-M", "T-T2-T1", "Z-Z1" and "U-V".  
 Fences to be repaired marked "J-N", "K-Q1", "M1", "M2", "S-T" & "V-X".

Pastoral lease land to be restored to or retained in Crown control as conservation area "CA1" subject to a tourism activities concession, by way of exchange for conservation land to be disposed of to Manuka Point Station Co. Ltd as "EXCH 1".

Pastoral lease land to be restored to or retained in Crown control, as conservation area "CA5" and "CA6" subject to a tourism activities concession.

Conservation land to remain as conservation area "CA3", subject to a tourism activities concession.

Conservation land to remain as conservation area "CA4", subject to a tourism activities concession.

Pastoral lease land to be restored to or retained in full Crown ownership and control as conservation area "CA7".

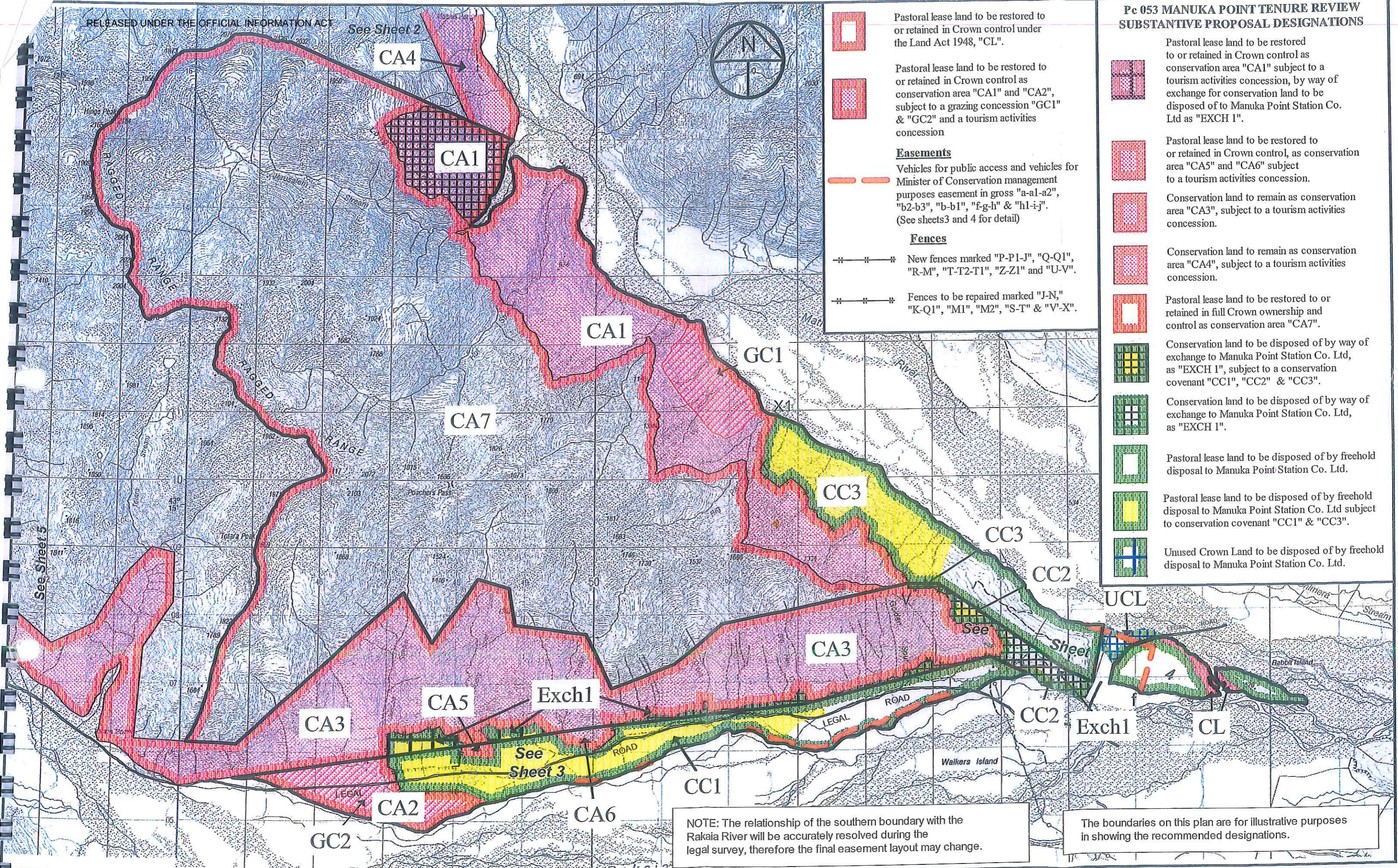
Conservation land to be disposed of by way of exchange to Manuka Point Station Co. Ltd, as "EXCH 1", subject to a conservation covenant "CC1", "CC2" & "CC3".

Conservation land to be disposed of by way of exchange to Manuka Point Station Co. Ltd, as "EXCH 1".

Pastoral lease land to be disposed of by freehold disposal to Manuka Point Station Co. Ltd.

Pastoral lease land to be disposed of by freehold disposal to Manuka Point Station Co. Ltd subject to conservation covenant "CC1" & "CC3".

Unused Crown Land to be disposed of by freehold disposal to Manuka Point Station Co. Ltd.



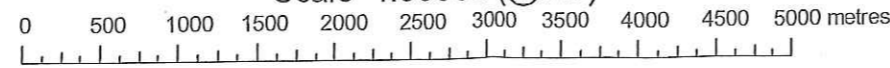
NOTE: The relationship of the southern boundary with the Rakaia River will be accurately resolved during the legal survey, therefore the final easement layout may change.

The boundaries on this plan are for illustrative purposes in showing the recommended designations.



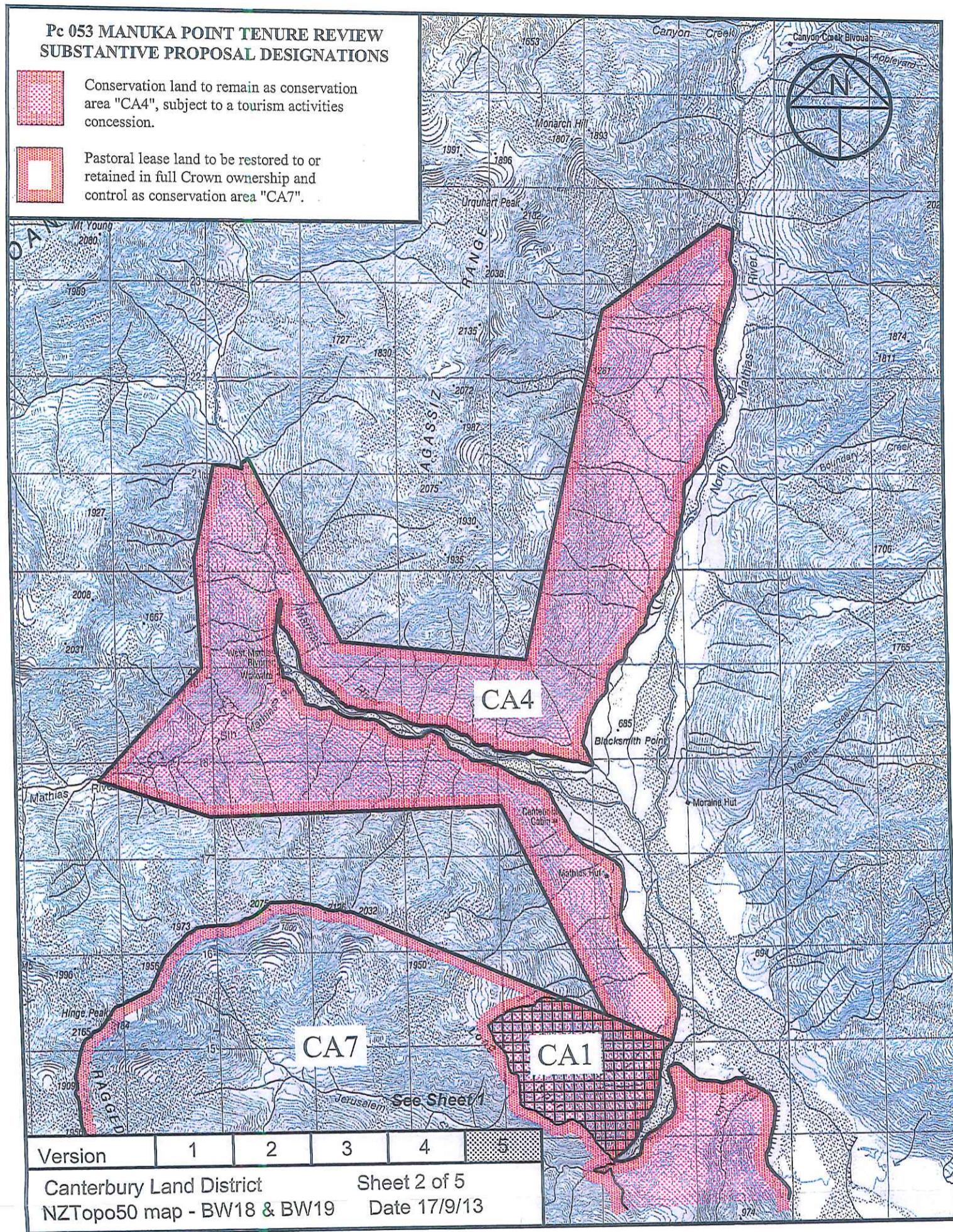
# Manuka Point

Scale 1:50000 (@ A3)



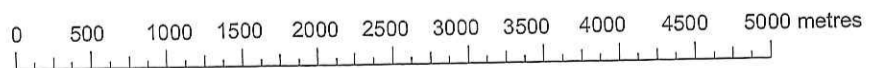
Version	1	2	3	4	5
Canterbury Land District	Sheet 1 of 5				
NZTopo50 map - BW18 & BW19	Date: 17/9/13				



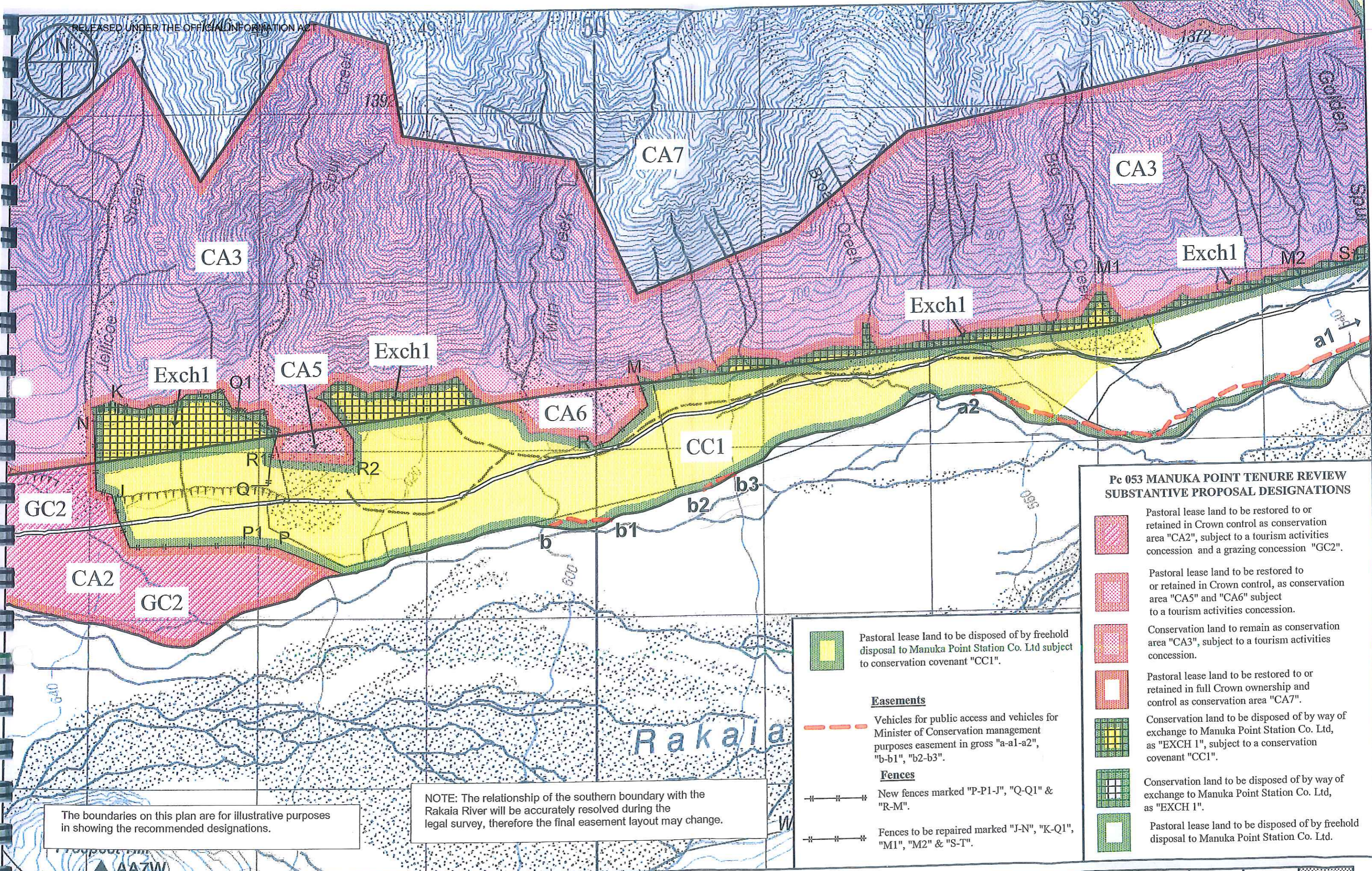


# Manuka Point








Scale 1:50000 (@ A4)











**Pc 053 MANUKA POINT TENURE REVIEW  
SUBSTANTIVE PROPOSAL DESIGNATIONS**

-  Pastoral lease land to be restored to or retained in Crown control as conservation area "CA2", subject to a tourism activities concession and a grazing concession "GC2".
-  Pastoral lease land to be restored to or retained in Crown control, as conservation area "CA5" and "CA6" subject to a tourism activities concession.
-  Conservation land to remain as conservation area "CA3", subject to a tourism activities concession.
-  Pastoral lease land to be restored to or retained in full Crown ownership and control as conservation area "CA7".
-  Conservation land to be disposed of by way of exchange to Manuka Point Station Co. Ltd, as "EXCH 1", subject to a conservation covenant "CC1".
-  Conservation land to be disposed of by way of exchange to Manuka Point Station Co. Ltd, as "EXCH 1".
-  Pastoral lease land to be disposed of by freehold disposal to Manuka Point Station Co. Ltd.

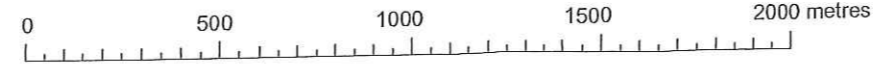
-  Pastoral lease land to be disposed of by freehold disposal to Manuka Point Station Co. Ltd subject to conservation covenant "CC1".
- Easements**
-  Vehicles for public access and vehicles for Minister of Conservation management purposes easement in gross "a-a1-a2", "b-b1", "b2-b3".
- Fences**
-  New fences marked "P-P1-J", "Q-Q1" & "R-M".
  -  Fences to be repaired marked "J-N", "K-Q1", "M1", "M2" & "S-T".


NOTE: The relationship of the southern boundary with the Rakaia River will be accurately resolved during the legal survey, therefore the final easement layout may change.

The boundaries on this plan are for illustrative purposes in showing the recommended designations.

# Manuka Point

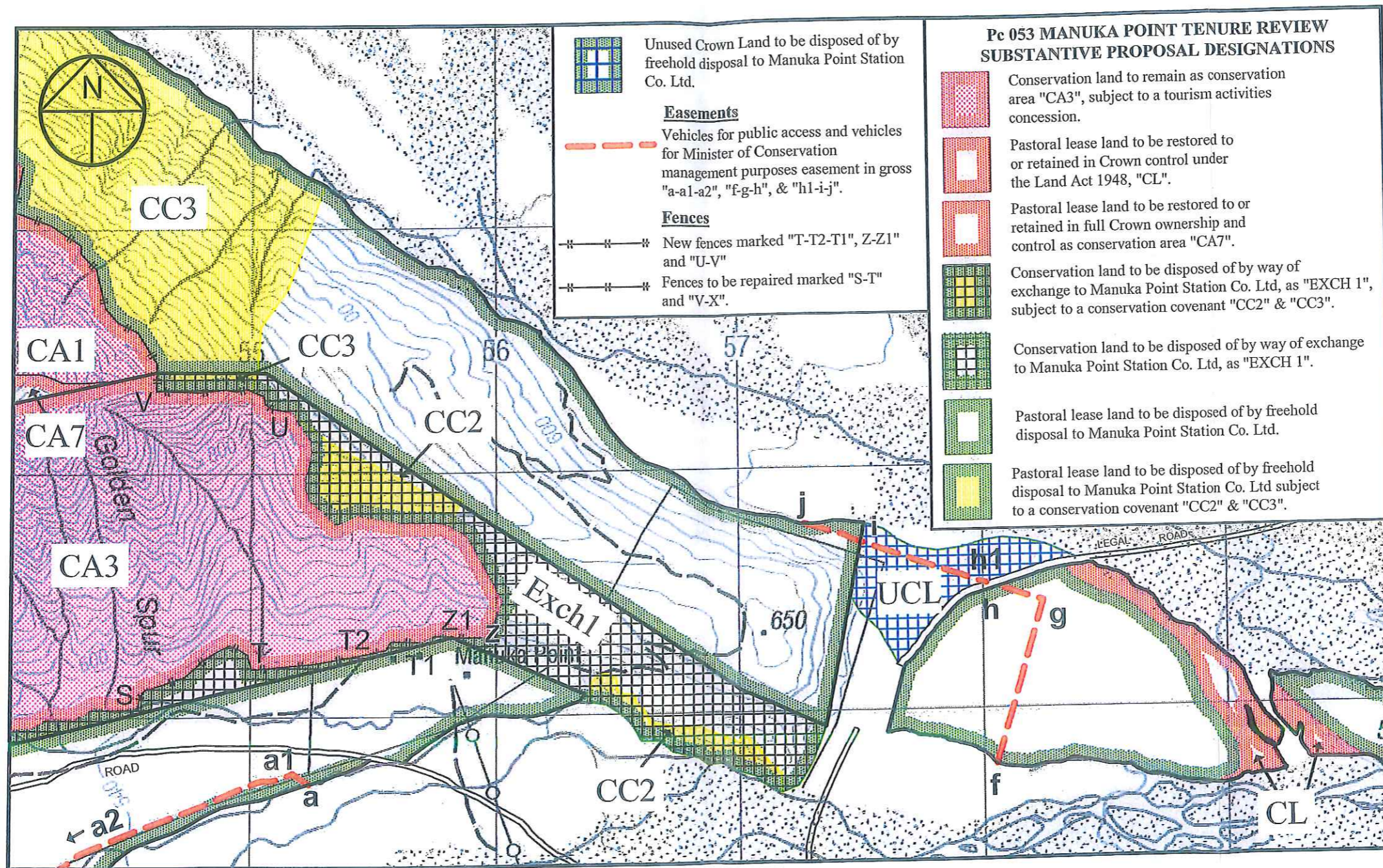
Scale 1:20000 (@ A3)



Version	1	2	3	4	
Canterbury Land District NZTopo50 map - BW18 & BW19	Sheet 3 of 5 Date: 17/9/13				



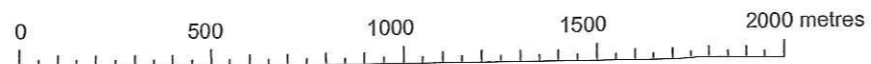




darroch

# Manuka Point

Scale 1:20000 (@ A4)



Version	1	2	3	4	5
Canterbury Land District					
NZTopo50 map - BW18 & BW19					
Sheet 4 of 5					
Date 17/9/13					



