

Crown Pastoral Land Tenure Review

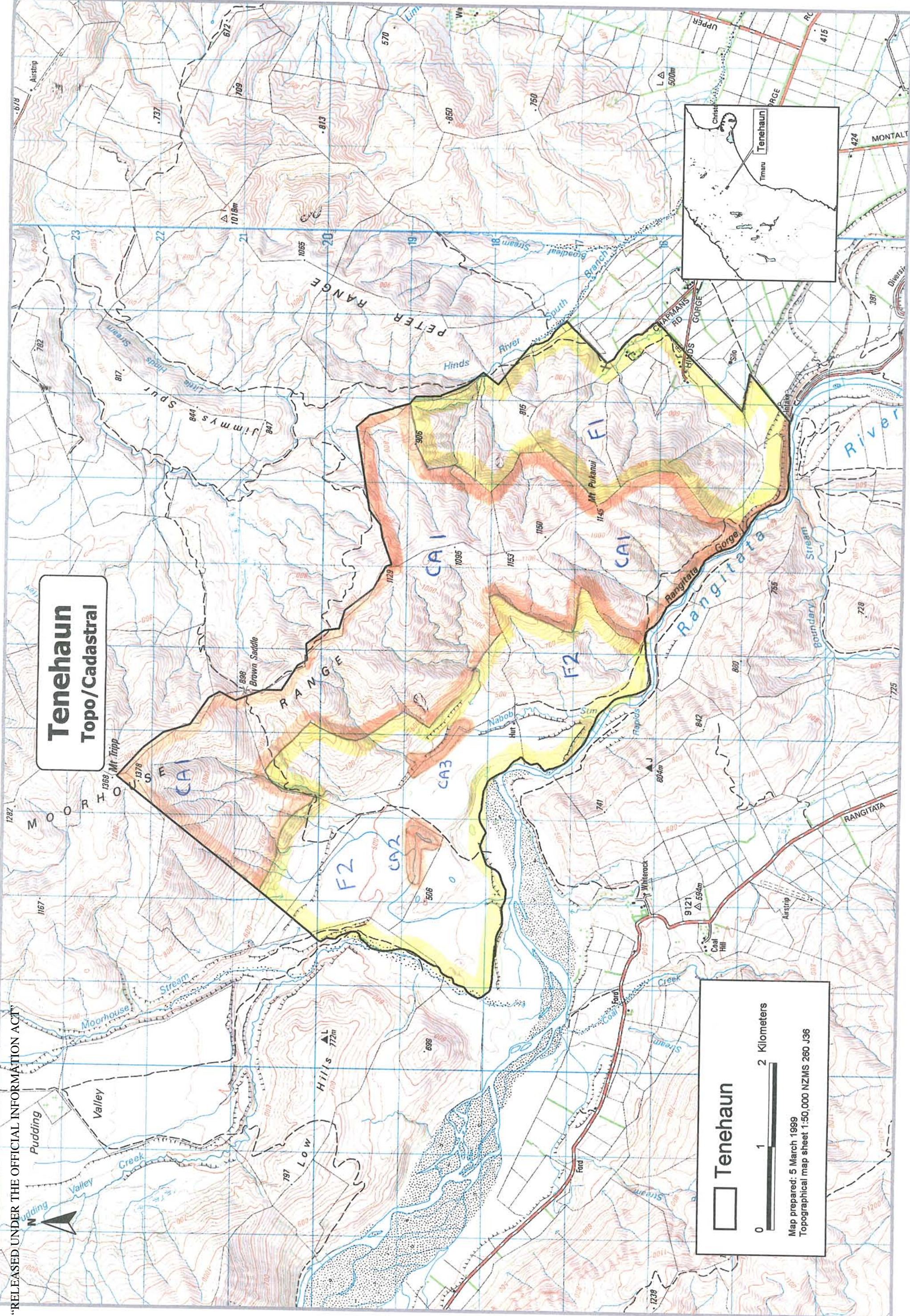
Lease name: TENAHAUN

Lease number: PC 020

Public submissions – Part 2

These submissions were received as a result of the public advertising of the preliminary proposal for tenure review.

October 04



Tenehaun

0 1 2 Kilometers

Map prepared: 5 March 1999
Topographical map sheet 1:50,000 NZMS 260 J36

Tenehaun

Land to be Freeholded

Land to be Freeholded for Conservation Purposes

Received 18/8/04.
JTD. 223

"RELEASED UNDER THE OFFICIAL INFORMATION ACT"

**THE GERALDINE TRAMPING CLUB,
76 PYE Road, RD, 21,
GERALDINE.
15th, August 2004.**

**The Southern Regional Manager,
Opus International Consultants Ltd,
PO Box 1482
Christchurch.
Attention Mike Todd.**

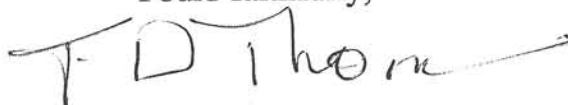
Dear Sir,

Tenure Review-Tenahaun Pastoral lease.

Thank you for the opportunity to comment on the preliminary proposal for tenure review of the above property.

We agree with the proposals as outlined in the summary of 26 June 2004, and have nothing constructive to add.

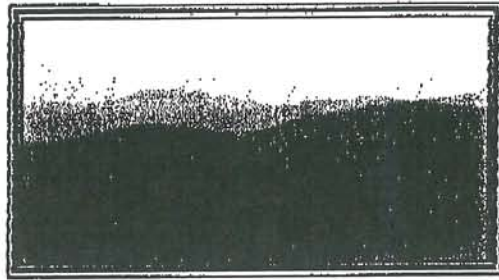
Yours faithfully,



F.D. Thomas,
The Geraldine Tramping Club.

"RELEASED UNDER THE OFFICIAL INFORMATION ACT"

A.L.J. Evans
 34 John Street
 Temuka 18/8/04
 South Canterbury
 Phone & Fax 03 61 57 420



TENURE REVIEW

Mike Todd
 for Southern Regional Manager

O PUS
 158 Hereford St
 CHRISTCHURCH
 FAX 03 365 7858

I agree with the preliminary
 proposal for Tenaclean Pastoral
 lease as submitted 21 Oct 03.

Thank you for the opportunity to
 comment

Yours sincerely

Allan Evans F.M.C.

copy to SAC F.M.C.
 David Rouna.



NGAI TAHU Development

Level 1, Te Waipounamu House
158 Hereford Street
PO Box 13-046, Christchurch
Phone 03-366 4344
Fax 03-366 4267

August 18, 2004

Mike Todd
Opus International Consultants
PO Box 1482
CHRISTCHURCH

Tēnā koe Mike

Preliminary Proposal for Tenehaun Pastoral Leases

Te Rūnanga o Ngāi Tahu and the relevant Papatipu Rūnanga; Te Rūnanga o Arowhenua and Te Rūnanga o Waihao have considered the information provided in the Tenehaun Preliminary Proposal, and have the following comments.

Protection for Rangitata River and Hinds River

Both the Rangitata and the Hinds River are of immense cultural, traditional and historical significance to Ngāi Tahu. Given the importance of both rivers to Ngāi Tahu they are both provided for as Statutory Acknowledgments under the Ngāi Tahu Claims Settlement Act 1998. The following extracts are from the NTCSA 1998.

Rangitata River

The Rangitata was a major mahinga kai for Canterbury Ngāi Tahu. Weka and other forest birds were the main foods taken from the inland reaches of the Rangitata. Tutu berries were also taken along the waterway.

The river was sometimes used by Ngāi Tahu parties from Canterbury as part of a trail to Te Tai Poutini (the West Coast). The tūpuna had an intimate knowledge of navigation, river routes, safe harbours and landing places, and the locations of food and other resources on the river. The river was an integral part of a network of trails which were used in order to ensure the safest journey and incorporated locations along the way that were identified for activities including camping overnight and gathering kai. Knowledge of these trails continues to be held by whānau and hapū and is regarded as taonga. The traditional mobile lifestyle of the people led to their dependence on the resources of the rivers.

Considering the significance of the Rangitata River to Ngāi Tahu the Rangitata River is a Statutory Acknowledgements under the Ngāi Tahu Claims Settlement Act 1998. Ngāi Tahu supports the proposed marginal strip that will be provided for the Rangitata River. Ngāi Tahu also supports the proposed Conservation Areas, CA 4 and CA 5, which will provide extra protection.

Hinds River

Hekeao and Tokara (the two branches of the Hinds River) traditionally supported a number of Nohoanga (settlements), including Hekeao, Kakaho, Koroki, Te Mihi, Pakutahi, Karipo, Pūrākaunui, Rukuhia and Tokara. As a result of this history of occupations, there are a number of urupā associated with the river. Urupā are the resting places of Ngāi Tahu tūpuna and as such are the focus for whānau traditions.

The river was an important mahinga ka, known particularly as a source of tuna (eel) and kanakana (lamprey). The tūpuna had considerable knowledge of whakapapa, traditional trails and tauranga waka, places for gathering kai and other taonga, ways in which to use the resources of the river, the relationship of people with

“RELEASED UNDER THE OFFICIAL INFORMATION ACT”

the river and their dependence on it and tikanga for the proper and sustainable utilization of resources. All of these values remain important to Ngāi Tahu.

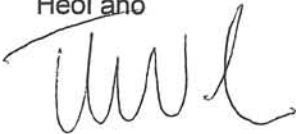
Ngāi Tahu supports the marginal strips that will be provided for both the Hinds River and Rangitata River once the Crown land is disposed off to the lessee. Ngāi Tahu also supports the proposed Conservation Areas, CA 3 and CA 4, which will provide extra protection for the Rangitata River.

Conservation Areas – CA 2 and CA 3

Ngāi Tahu supports CA 2 and CA 3 which will provide protection for the wetlands located on Tenehaun Pastoral Lease.

If you have any questions please do not hesitate to contact me.

Heoi anō



Takerei Norton
Kairuruku Pūrero Ngā Rawa Taiao
Natural Resources Unit Project Co-ordinator

cc Te Rūnanga o Waihao
 Te Rūnanga o Arowhenua
 Mandy Waaka-Homes
 John Wilkie

FAXED 20/8/04 227

"RELEASED UNDER THE OFFICIAL INFORMATION ACT"

Bill Ross

South Canterbury Branch
29a Nile St
Timaru

19.08.04

Southern Regional Manager
Opus International Consultants
P.O.Box 1482
Christchurch

RECEIVED
23 AUG 2004
OPUS
INTERNATIONAL
CONSULTANTS



FOREST & BIRD

ROYAL FOREST AND
BIRD PROTECTION
SOCIETY OF
NEW ZEALAND INC

Dear Sir/Madam

Re Tenure Review - Tenahaun Pastoral Lease

Thank you for sending the Branch an information pack containing a summary of the preliminary proposal for tenure review of Tenahaun Pastoral Lease.

Branch members have walked down through the Rangitata Gorge on the true right and viewed the areas bounding the Rangitata Gorge which were considered to be significant for conservation and landscape values.

The areas that are to be retained in Crown Control are generally acceptable, provided there is suitable access to all of these areas.

However, with regards to areas CA4 and CA5, while we fully support the retention of these two areas in crown ownership and control, we ask that **all the land** between the legal road and the margins along the Rangitata River, also be retained in full crown control and ownership. Because this strip of land forms a significant part of the landscape of the river environment, contains indigenous vegetation, and could provide more practical access along the edges of the river.

Yours sincerely

F. B. Ross

Fraser Ross,
Branch Field Officer
South Canterbury Branch.

Received 26/08/04
Ad. 228.

"RELEASED UNDER THE OFFICIAL INFORMATION ACT"

Paul & Helen Tarbotton
Temora Holdings Ltd
Montalto
R.D.8.,
Ashburton
(03)3036259

Attention:
Commissioner of Crown Lands
C/- Opus International Consultants Ltd

We wish to express two concerns regarding the tenure review proposals for Tenahaun Pastoral Lease.

1. FIRE RISK - We are concerned that public access to the proposed conservation areas could pose a serious fire risk during dry periods. In the event of a fire this land would be very difficult to access for fire fighting purposes. A fire could very quickly rage out of control causing major damage to the areas of Tenahaun being retained for farming and neighbouring farming operations.

2.ACCESS DURING LAMBING/CALVING - We are particularly concerned about public access along the easement up the Hinds River South Branch from Chapmans Road (marked i-j on the maps). The first half of this easement adjoins our property and it is critical that stock are disturbed as little as possible during this time (mid August through to mid October).

I believe that public access to the conservation areas should be denied during mid August to mid October and also any time that the district fire risk is high. This would still give people ample time to enjoy these areas of land but not at the possible expense to neighbouring farming enterprises.

Yours Sincerely

Paul Tarbotton

Tenure Review Tenahaun Pastoral Lease

Montalto Water Supply

The Montalto Water Supply supplies both domestic and stock water to 33 properties covering 5396 hectares. There are approximately 68 kilometres of mainly polyethylene supply pipe. The scheme was officially opened in May 1963.

There have been a number of supply points during the years. The present supply is from the Three Forks Stream in the South Hinds River and since it was installed it has proved reliable. An ultra violet sterilisation unit and backup chlorination plant was installed in the mid 90's to improve the quality of the water being supplied to users of the scheme.

The resource consents for the scheme expire in September 2005 and as part of the process the farmer's committee are seeking to secure and improve the quality of the water from the Three Forks Stream. This would involve the creation of a riparian area around the stream where the water is taken from.

The committee has talked with Peter Wright (water is supplied to his plains property from the scheme) and he is in agreement with the idea. A detailed proposal has not been developed yet. The preferred option for the riparian area could be the total catchment. The least preferred option would be just a few hectares around the dam and intake. The bigger the area protected the better the quality of the runoff water to be used by the scheme.

The farmers in the Montalto Water Supply scheme would like the tenure review process, if at all possible, to provide protection for the catchment area. If the Commissioner of Crown Lands could create a category that would stop grazing on the area it would mean that the runoff water would be of a higher quality than at present and that in turn would mean that the water would require less treatment.



Anthony R Taylor
for the Montalto Water Supply