

Crown Pastoral Land Tenure Review

Lease name : THE GRAMPIANS

Lease number : PT 022

**Plan attaching to the Conservation
Resources Report**

- Landscape Units &
Landscape Values Map**

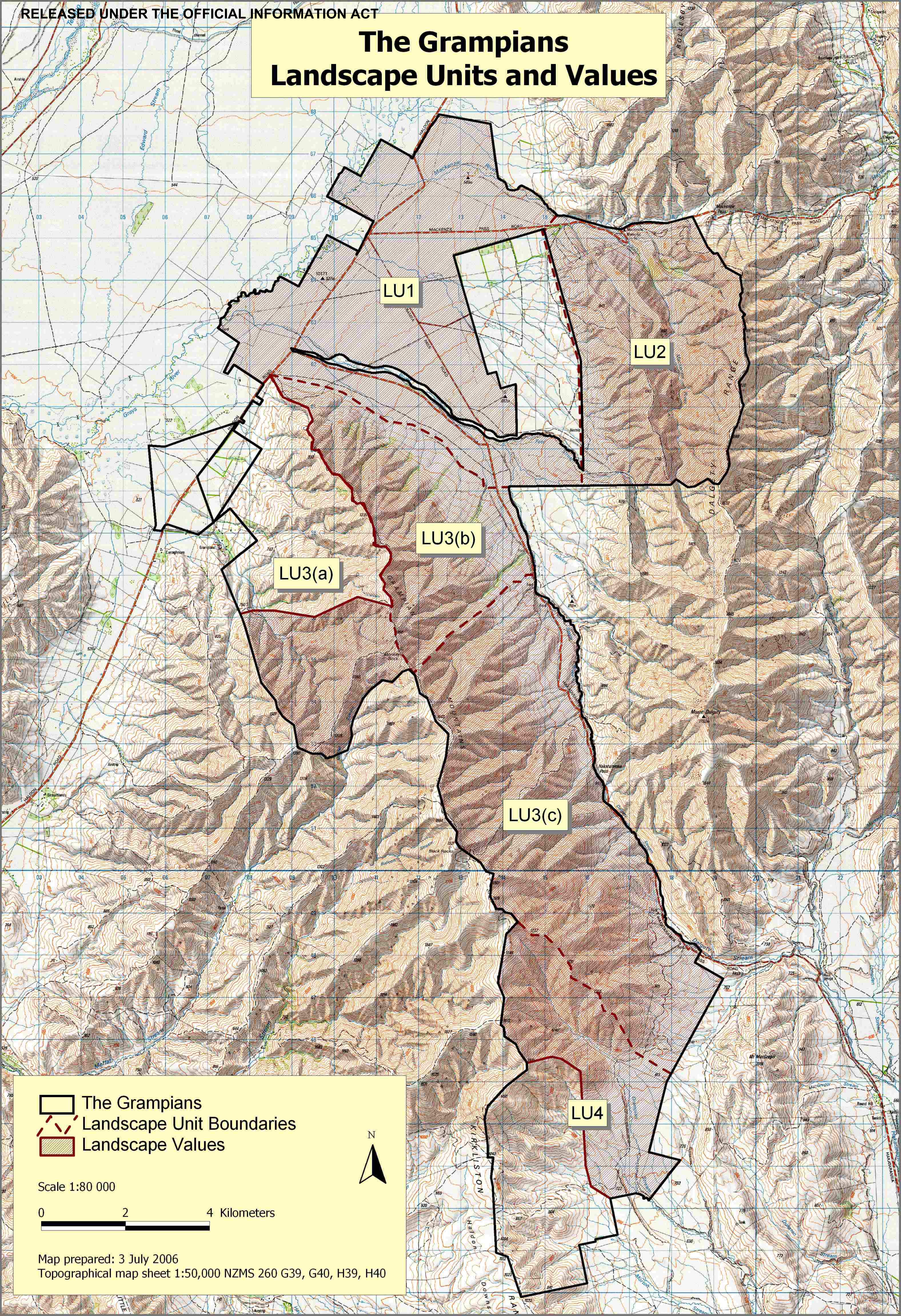
The following plan forms page 6 of the Conservation Resources Report provided by the Department of Conservation.

It is released under the Official information Act 1982.

July

06

The Grampians Landscape Units and Values



LU1

LU2

LU3(b)

LU3(a)

LU3(c)

LU4

- The Grampians
- Landscape Unit Boundaries
- Landscape Values



Scale 1:80 000

0 2 4 Kilometers

Map prepared: 3 July 2006
Topographical map sheet 1:50,000 NZMS 260 G39, G40, H39, H40