

Crown Pastoral Land Tenure Review

Lease name : THE GRAMPIANS

Lease number : PT 022

Plan attaching to the Conservation Resources Report - Botanical Values Map

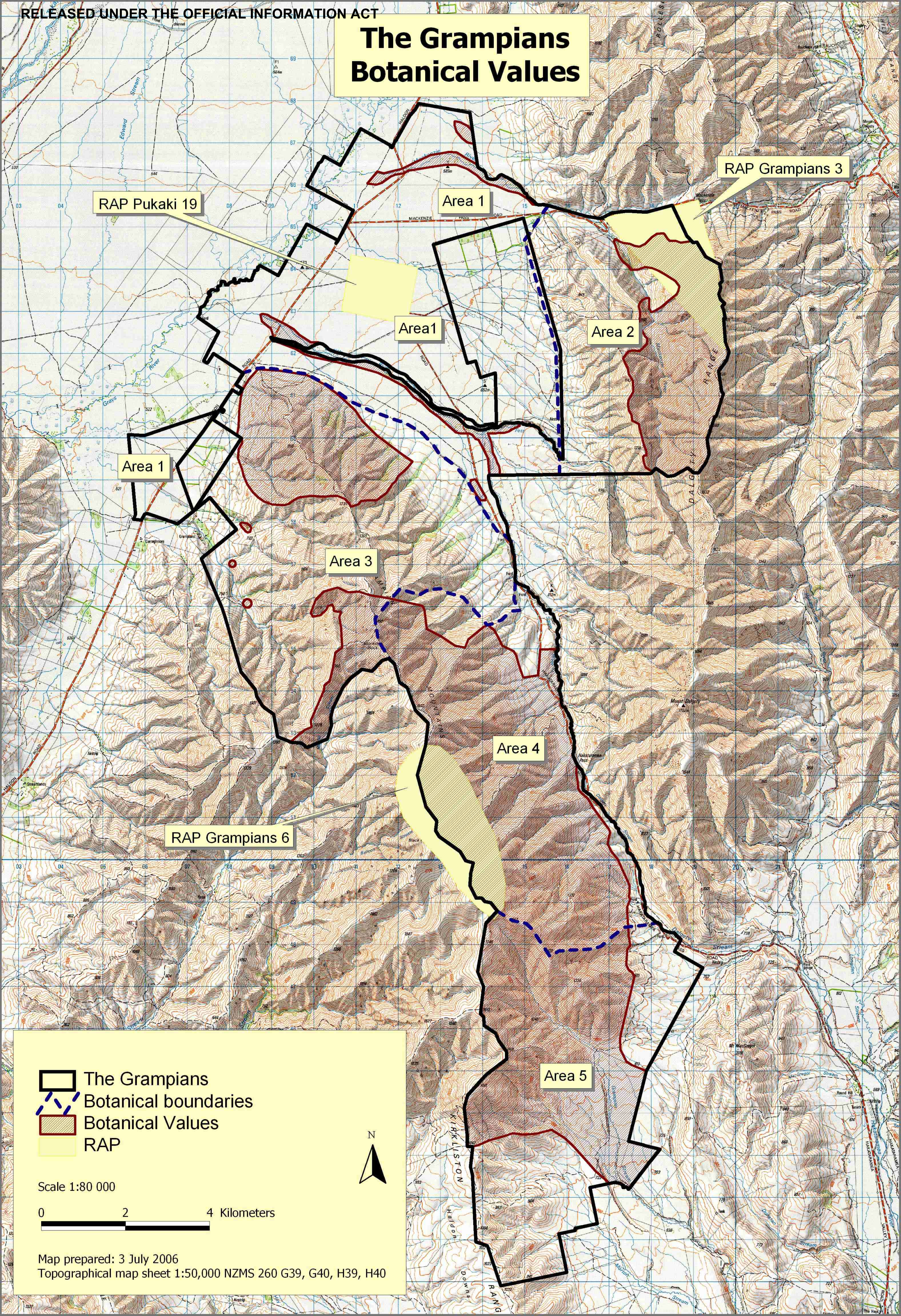
The following plan forms page 17 of the Conservation Resources Report provided by the Department of Conservation.

It is released under the Official information Act 1982.

July

06

The Grampians Botanical Values



RAP Pukaki 19

Area 1

RAP Grampians 3

Area1

Area 2

Area 1

Area 3

Area 4

RAP Grampians 6

Area 5

- The Grampians
- Botanical boundaries
- Botanical Values
- RAP



Scale 1:80 000

0 2 4 Kilometers

Map prepared: 3 July 2006
Topographical map sheet 1:50,000 NZMS 260 G39, G40, H39, H40