

Crown Pastoral Land Tenure Review

Lease name : WYUNA

Lease number : PO 299

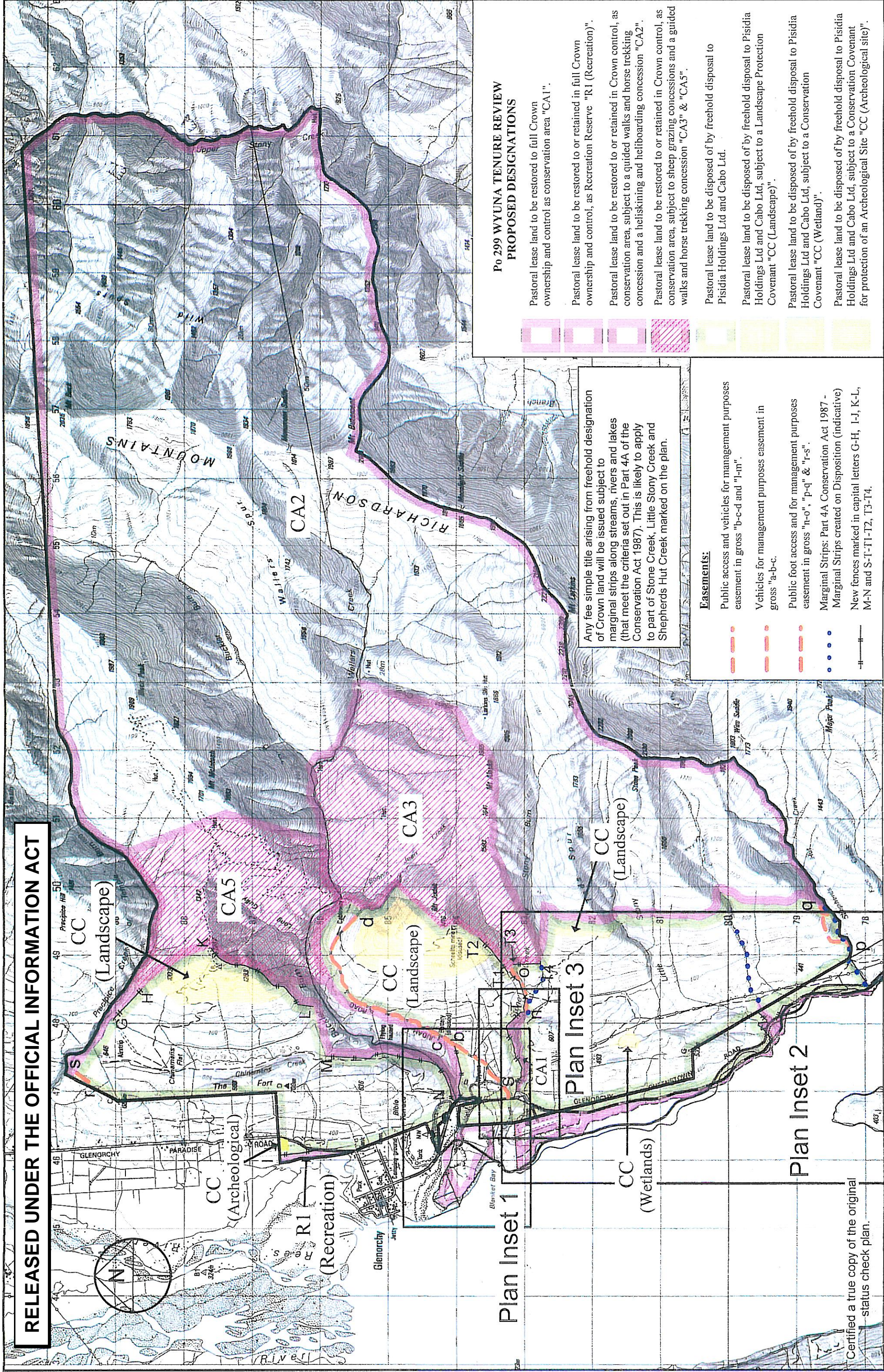
Designations Plan - Map 1

A Designations Plan forms part of the Tenure Review Substantive Proposal. The attached plan is a copy of the Designations Plan included in the Substantive Proposal for the above review. The Substantive Proposal has been accepted by the Leaseholder.

A summary of the Substantive Proposal is available as part of a notice of acceptance document lodged for registration against the Landonline computer register of the leasehold Certificate of Title being OT1C/1038. The Notice of Acceptance is a public document searchable at a LINZ processing centre or by licenced remote access to Landonline.

August

05



Po 299 WYUNA TENURE REVIEW
PROPOSED DESIGNATIONS

- Pastoral lease land to be restored to full Crown ownership and control as conservation area "CA1".
- Pastoral lease land to be restored to or retained in full Crown ownership and control, as Recreation Reserve "RI (Recreation)".
- Pastoral lease land to be restored to or retained in Crown control, as conservation area, subject to a guided walks and horse trekking concession and a helisking and heliboarding concession "CA2".
- Pastoral lease land to be restored to or retained in Crown control, as conservation area, subject to sheep grazing concessions and a guided walks and horse trekking concession "CA3" & "CA5".
- Pastoral lease land to be disposed of by freehold disposal to Pisidia Holdings Ltd and Cabo Ltd.
- Pastoral lease land to be disposed of by freehold disposal to Pisidia Holdings Ltd and Cabo Ltd, subject to a Landscape Protection Covenant "CC (Landscape)".
- Pastoral lease land to be disposed of by freehold disposal to Pisidia Holdings Ltd and Cabo Ltd, subject to a Conservation Covenant "CC (Wetland)".
- Pastoral lease land to be disposed of by freehold disposal to Pisidia Holdings Ltd and Cabo Ltd, subject to a Conservation Covenant for protection of an Archeological Site "CC (Archeological site)".

Any fee simple title arising from freehold designation of Crown land will be issued subject to marginal strips along streams, rivers and lakes (that meet the criteria set out in Part 4A of the Conservation Act 1987). This is likely to apply to part of Stone Creek, Little Stony Creek and Shepherds Hut Creek marked on the plan.

Easements:

- Public access and vehicles for management purposes easement in gross "b-c-d and "l-in".
- Vehicles for management purposes easement in gross "a-b-c".
- Public foot access and for management purposes easement in gross "n-o", "p-q" & "r-s".
- Marginal Strips: Part 4A Conservation Act 1987 - Marginal Strips created on Disposition (indicative)
- New fences marked in capital letters G-H, I-J, K-L, M-N and S-T-T1-T2, T3-T4.

Wyuna Station

Scale 1:50000

0 500 1000 1500 2000 2500 3000 3500 4000 4500 5000

The boundaries shown on this plan are indicative and are for illustrative and discussion purposes only.
No guarantee of accuracy can be given until the survey data supporting the boundary positions is researched thoroughly when the survey prescription is prepared.