

Crown Pastoral Land Tenure Review

Lease name : CABERFEIDH

Lease number : PT 134

Substantive Proposal Designations Plan


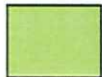
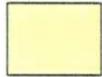





A Designations Plan forms part of the Tenure Review Substantive Proposal. The attached plan is a copy of the Designations Plan included in the Substantive Proposal for the above review. The Substantive Proposal has been accepted by the Leaseholder.

A summary of the Substantive Proposal is available as part of a notice of acceptance document lodged for registration against the Landonline computer register of the leasehold Certificate of Title being **CB31F/1199**. The Notice of Acceptance is a public document searchable by licensed remote access to Landonline.

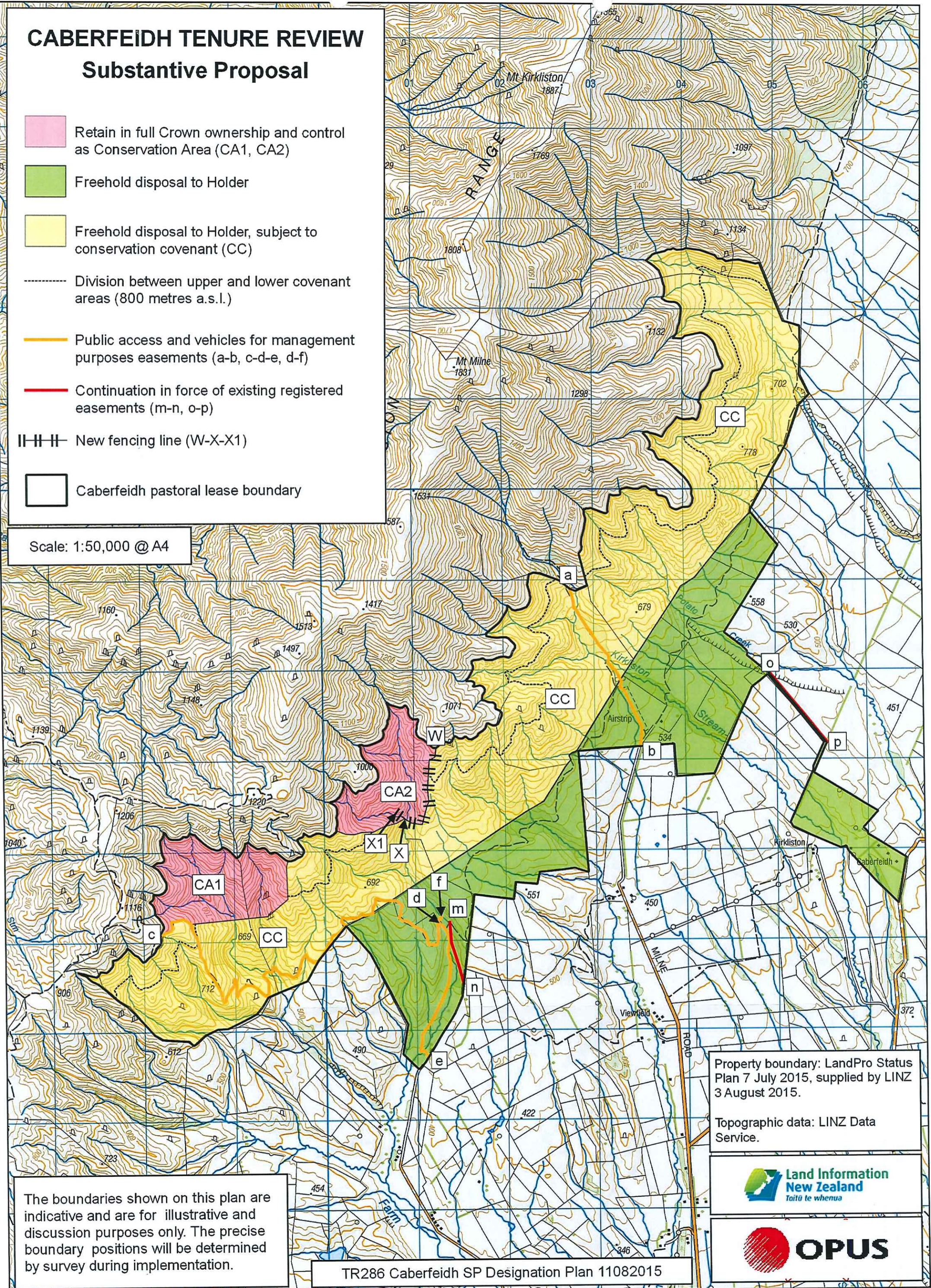
The report attached is released under the Official Information Act 1982.

CABERFEIDH TENURE REVIEW

Substantive Proposal

-  Retain in full Crown ownership and control as Conservation Area (CA1, CA2)
-  Freehold disposal to Holder
-  Freehold disposal to Holder, subject to conservation covenant (CC)
-  Division between upper and lower covenant areas (800 metres a.s.l.)
-  Public access and vehicles for management purposes easements (a-b, c-d-e, d-f)
-  Continuation in force of existing registered easements (m-n, o-p)
-  New fencing line (W-X-X1)
-  Caberfeidh pastoral lease boundary

Scale: 1:50,000 @ A4



The boundaries shown on this plan are indicative and are for illustrative and discussion purposes only. The precise boundary positions will be determined by survey during implementation.

TR286 Caberfeidh SP Designation Plan 11082015

Property boundary: LandPro Status Plan 7 July 2015, supplied by LINZ 3 August 2015.

Topographic data: LINZ Data Service.

