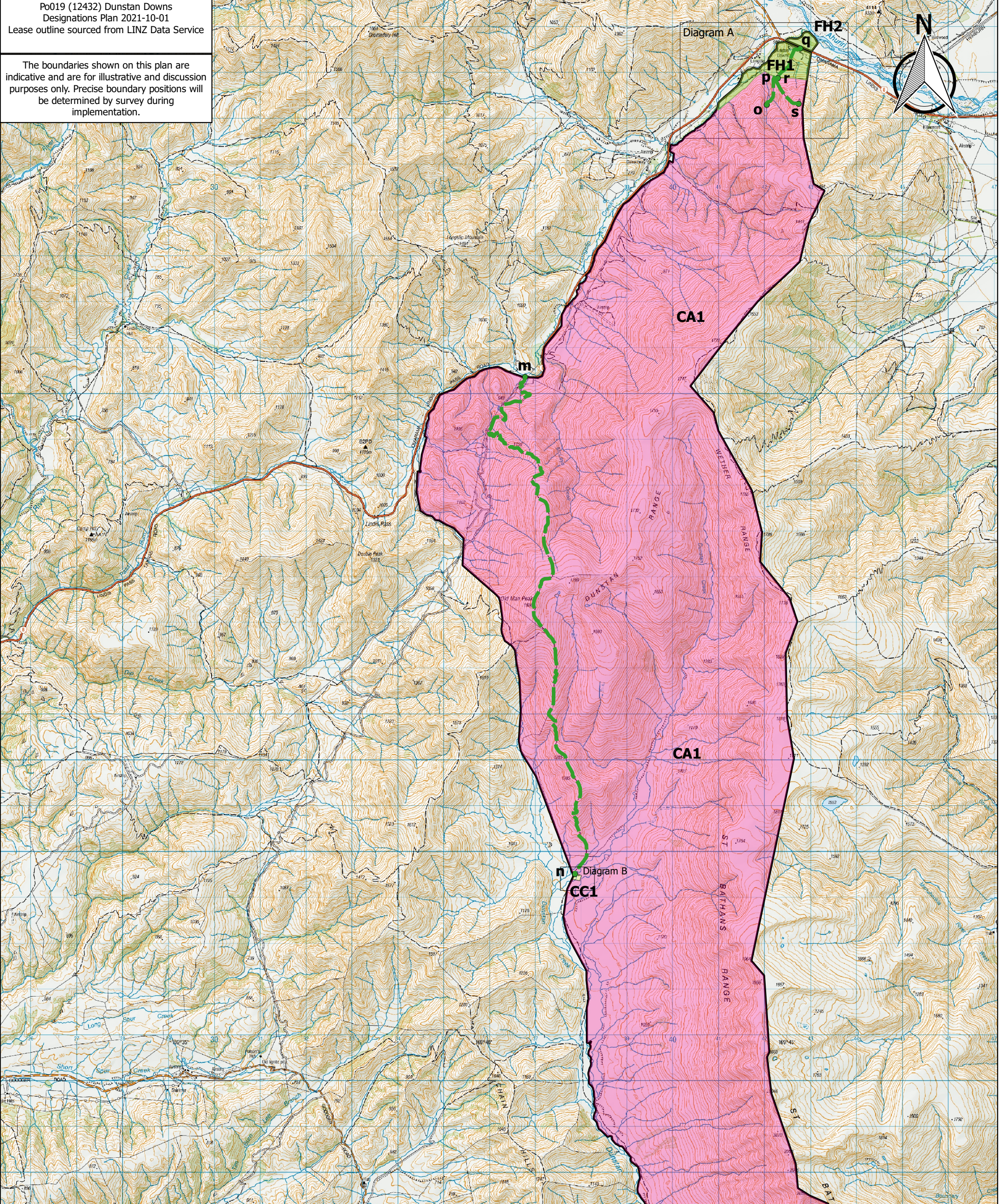


Dunstan Downs Tenure Review – Substantive Proposal Designations Plan



April 2022

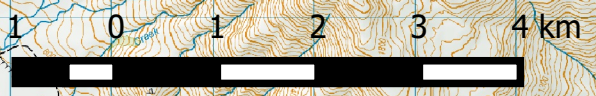
The boundaries shown on this plan are indicative and are for illustrative and discussion purposes only. Precise boundary positions will be determined by survey during implementation.



Po019 Dunstan Downs Tenure Review - Substantive Proposal

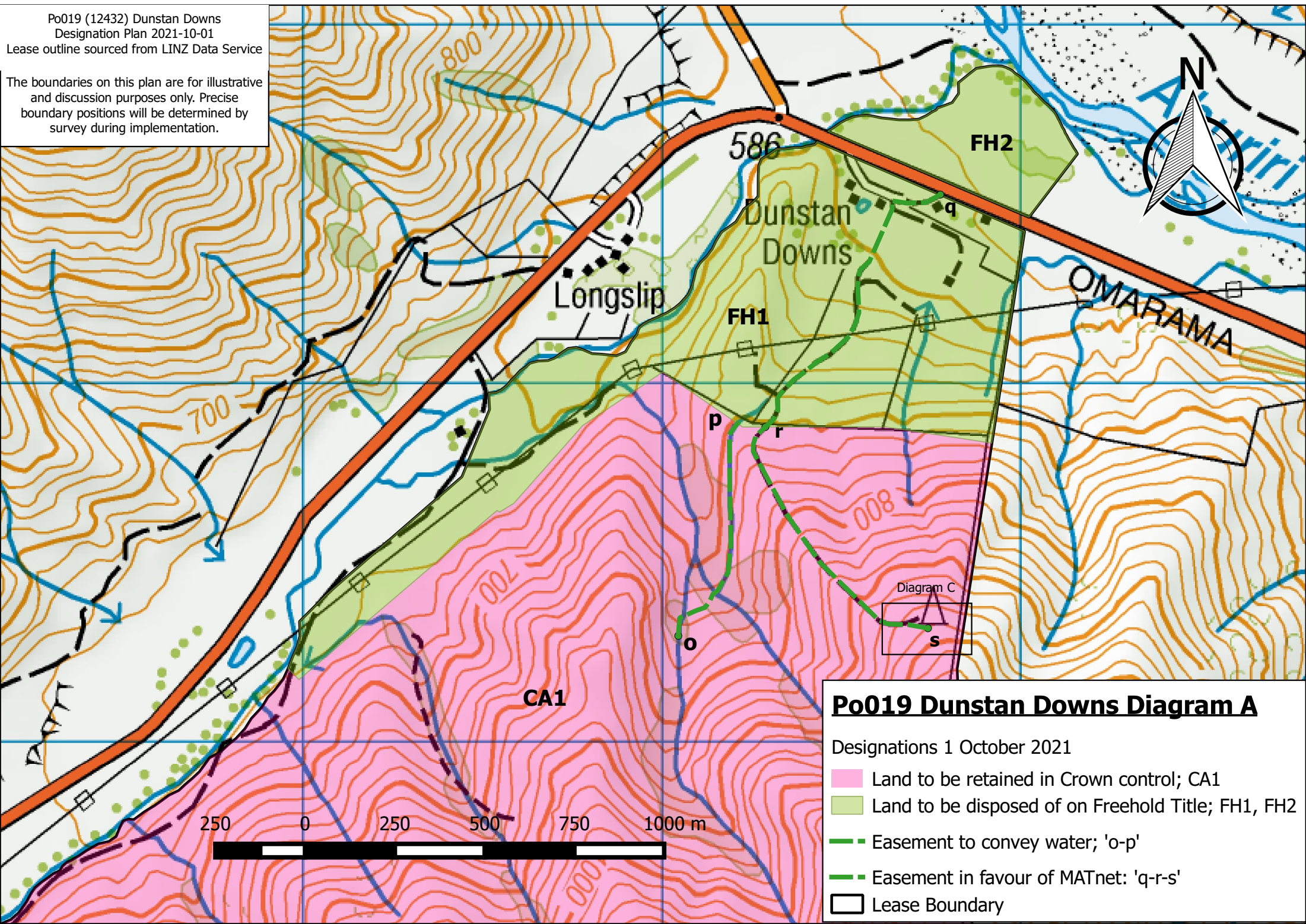
Designations 1 October 2021

- Land to be retained in Crown control as conservation area subject to easements: CA1
- Land to be disposed of as freehold to Dunstan Downs Limited: FH1, FH2
- Land to be disposed of as freehold to Dunstan Downs Limited subject to a conservation covenant: CC1
- Access Easement: 'm-n'
- Easement to Convey Water: 'o-p'
- Easement in favour of MATnet: 'q-r-s'



Po019 (12432) Dunstan Downs
 Designation Plan 2021-10-01
 Lease outline sourced from LINZ Data Service

The boundaries on this plan are for illustrative
 and discussion purposes only. Precise
 boundary positions will be determined by
 survey during implementation.



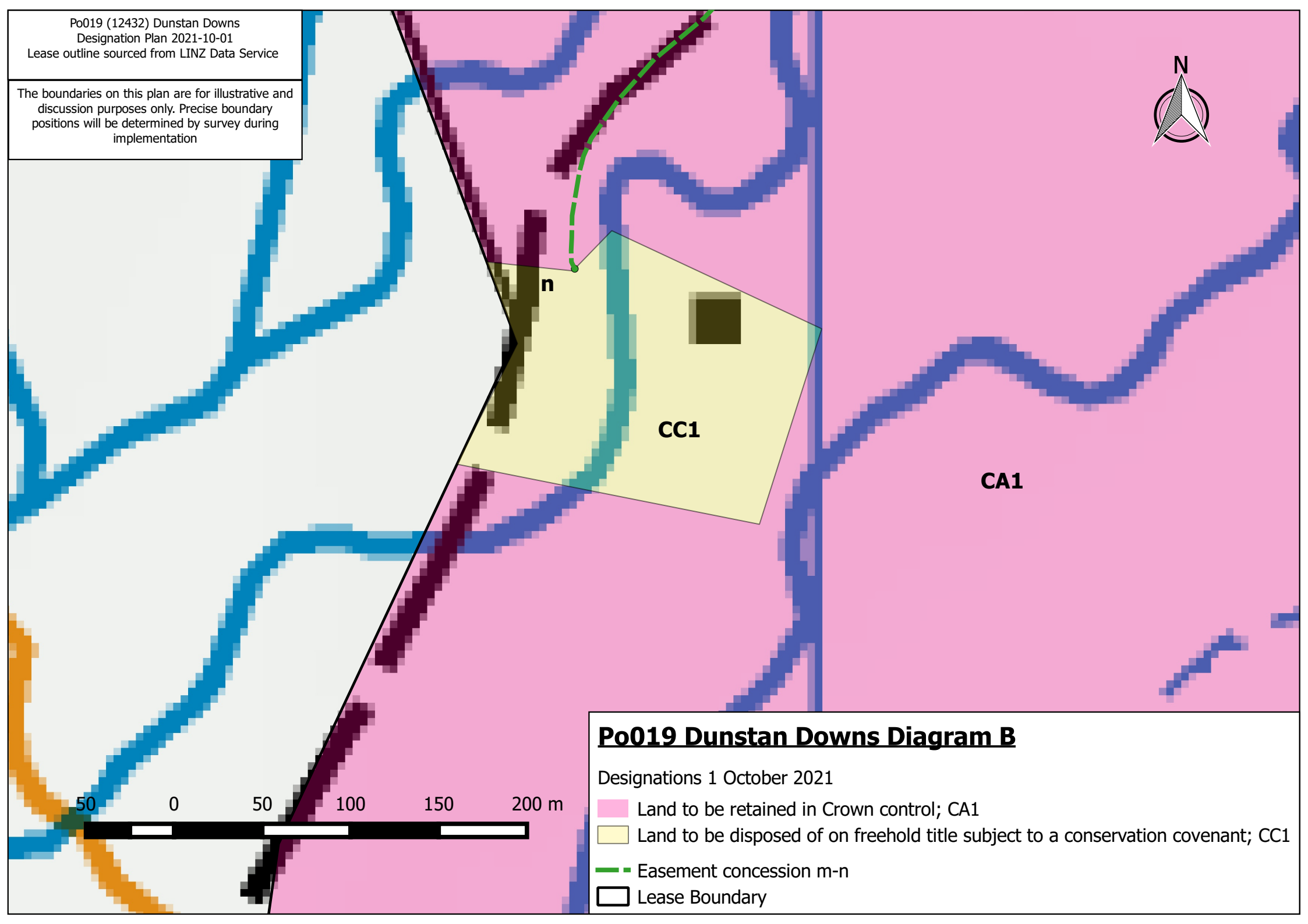
Po019 Dunstan Downs Diagram A

Designations 1 October 2021

- Land to be retained in Crown control; CA1
- Land to be disposed of on Freehold Title; FH1, FH2
- Easement to convey water; 'o-p'
- Easement in favour of MATnet: 'q-r-s'
- Lease Boundary





Po019 (12432) Dunstan Downs
Designation Plan 2021-10-01
Lease outline sourced from LINZ Data Service

The boundaries on this plan are for illustrative and discussion purposes only. Precise boundary positions will be determined by survey during implementation



Po019 Dunstan Downs Diagram B

Designations 1 October 2021

-  Land to be retained in Crown control; CA1
-  Land to be disposed of on freehold title subject to a conservation covenant; CC1
-  Easement concession m-n
-  Lease Boundary