

## MĀORI INTEREST IN SURPLUS CROWN-OWNED LAND

Notice is hereby given that the properties owned by the Crown and its agencies described in the Schedule below have been declared surplus by the Crown.

This schedule is published in order to operate the Protection Mechanism and the Sites of Significance process established by the Government to protect specific Māori interests in surplus Crown-owned land. Iwi/hapu representatives are invited to inform The Office for Māori Crown Relations – Te Arawhiti of specific interests they have in these properties, in accordance with the criteria set out on the forms for Landbanking and the Protection of Sites of Significance. Local Iwi representatives known to The Office for Māori Crown Relations – Te Arawhiti are being notified directly.

Submissions must be accompanied by the correct forms which can be obtained from the Settlement Advisor-Protection Mechanism at The Office for Māori Crown Relations – Te Arawhiti or at [www.linz.govt.nz](http://www.linz.govt.nz) (search protection mechanism or landbank). Forms for the Protection of Sites of Significance can also be obtained from the local office of Te Puni Kōkiri. Applications for both processes must be lodged with the Settlement Advisor-Protection Mechanism at The Office for Māori Crown Relations – Te Arawhiti by **4.00 pm on Friday, 3 September 2021**.

Properties for which no submission has been received by this date may be disposed of.

### Contact:

Denis McCord Ph (04) 494 9835 or [denis.mccord@tearawhiti.govt.nz](mailto:denis.mccord@tearawhiti.govt.nz)  
The Office for Māori Crown Relations – Te Arawhiti, Justice Centre,  
19 Aitken Street, Wellington 6011, (SX10111), Wellington.  
Reception: ph (04) 494 9800, Website: [www.tearawhiti.govt.nz](http://www.tearawhiti.govt.nz)

### SCHEDULE

#### SOUTH AUCKLAND LAND DISTRICT

**HN\*101608** 4047 m<sup>2</sup> Part Section 6 Blk VIII  
Maungakawa Survey District held  
in Record of Title SA176/299.  
Vacant land, zoned Rural;  
former Ngarua Hall site.  
State Highway 27 & Ngarua Lane,  
Ngarua (east of Morrinsville).

#### WELLINGTON LAND DISTRICT

**WN\*101609** 1219 m<sup>2</sup> Sections 33 & 34 SO 505437  
subject to a Reverse Sensitivity  
encumbrance.  
Vacant land, zoned Residential.  
The Expressway is nearby.  
Te Moana Road  
Waikanae.

**WN\*101610** 2170 m<sup>2</sup> Part Lot 8 DP 5786 shown  
K on SO 36533  
Vacant land, zoned General Residential  
Manor Park Road  
Manor Park, Upper Hutt.

For more information visit [www.linz.govt.nz](http://www.linz.govt.nz)



HN 101608

Pt Section 6  
Blk VIII Maungakawa SD  
0.4047

State Highway 27

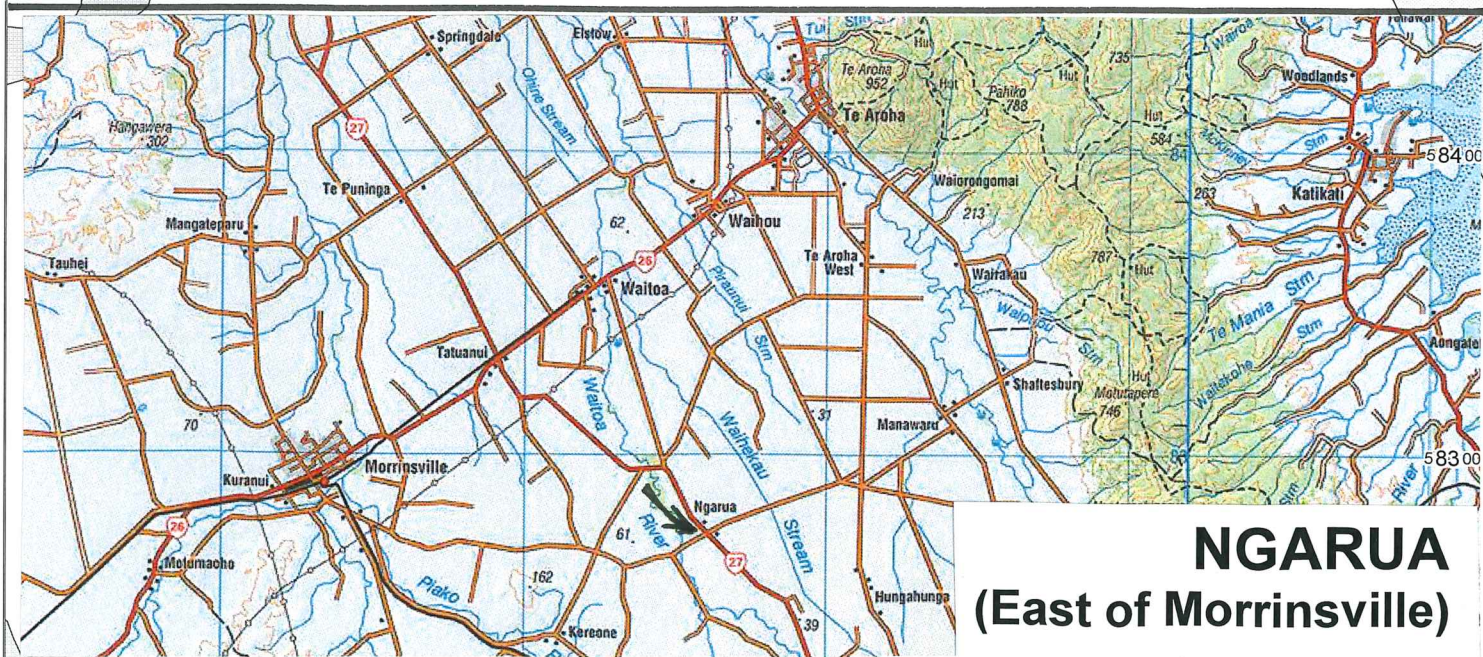
Ngarua Lane

Lot 1  
DPS 13910  
0.1535

Pt Section 6  
Blk VIII Maungakawa SD  
0.1879

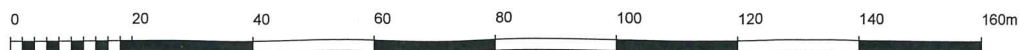
Lot 2  
DP 18422  
0.2855

Lot 1  
DP 18422  
0.1583



**NGARUA**  
(East of Morrinsville)

**QuickMap**  
Custom Software Ltd



Any person wishing to rely on the information shown on this map must independently verify the information

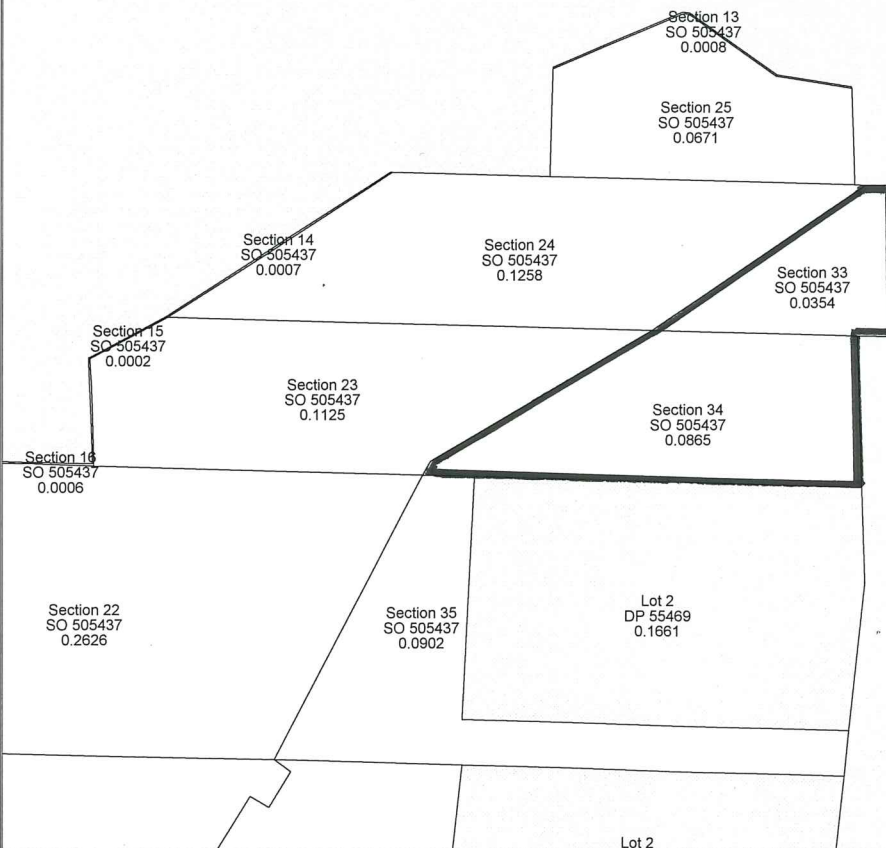
Scale 1:1250

Topographical and Cadastral map derived from LINZ data.



# WN 101609

State Highway 1  
(Expressway)



Te Moana Road

Lot 1  
DP 21044  
0.0809

Lot 4  
DP 21044  
0.0948

Lot 5  
DP 21044  
0.0948

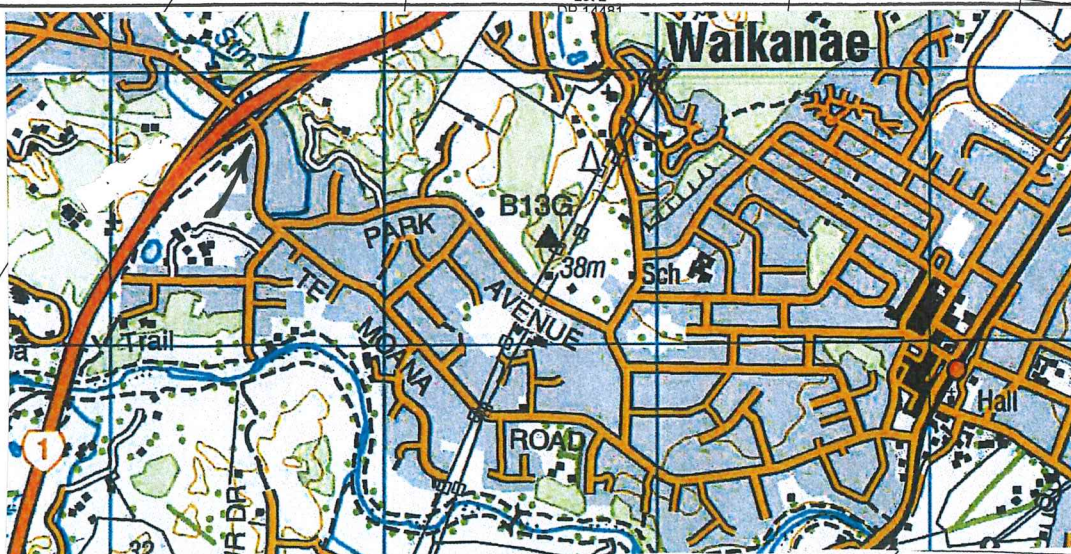
Lot 8  
DP 21044  
0.0948

Lot 9  
DP 21044  
0.0948

Lot 1  
DP 344791  
0.0540

Lot 2  
DP 344791  
0.0507

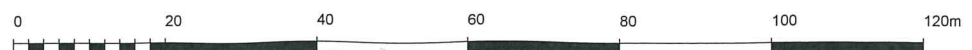
Lot 1  
DP 22770  
0.0847



1219 m<sup>2</sup> Sections 33 & 34 SO 505437 subject to a Reverse Sensitivity encumbrance. Vacant land, zoned Residential. The Expressway is nearby.

## WAIKANAE

**QuickMap**  
Custom Software Ltd

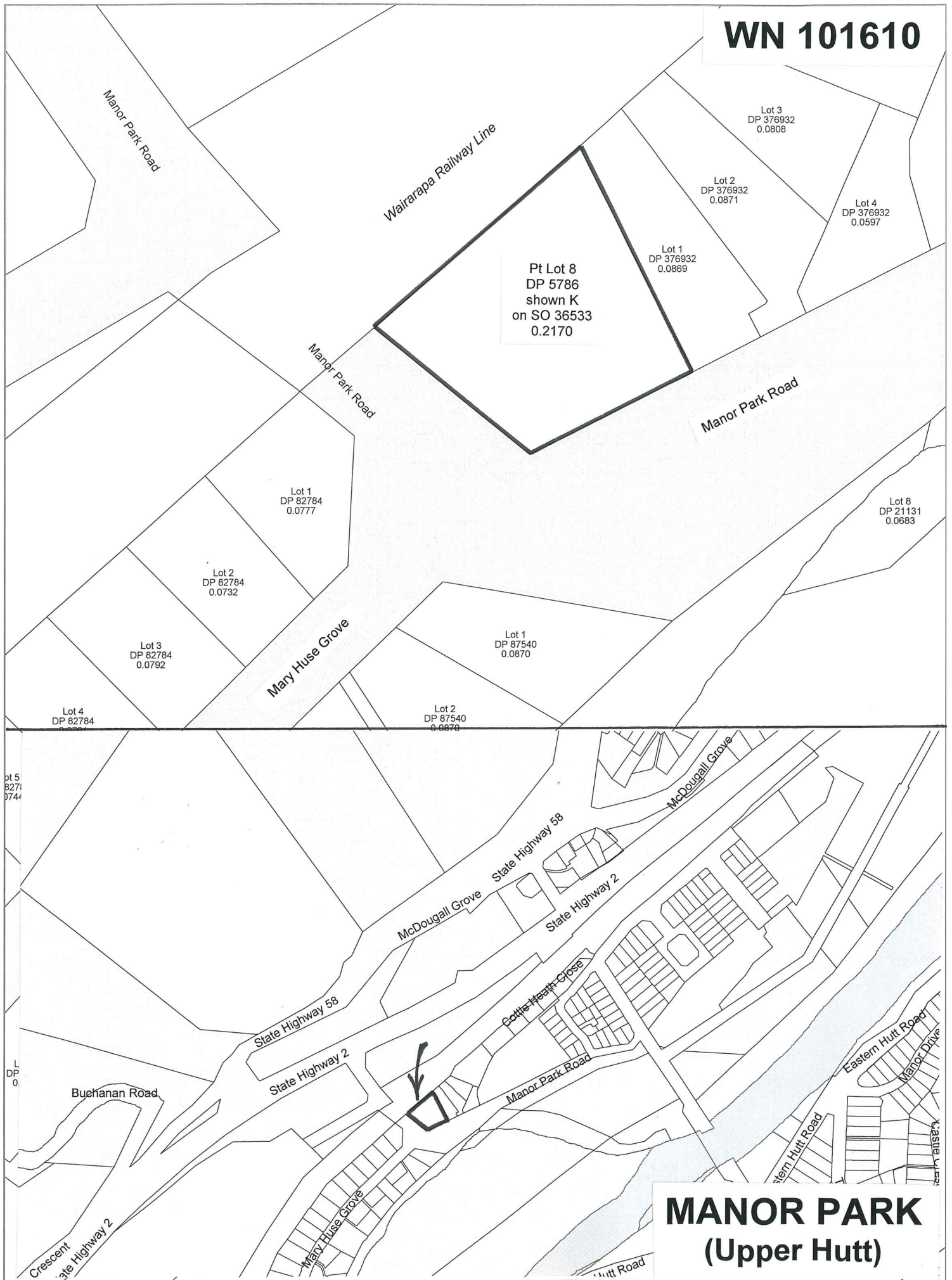


Any person wishing to rely on the information shown on this map must independently verify the information

Scale 1:1000

Topographical and Cadastral map derived from LINZ data.

**WN 101610**



**MANOR PARK**  
**(Upper Hutt)**

**QuickMap**  
Custom Software Ltd



Any person wishing to rely on the information shown on this map must independently verify the information

Scale 1:1000

Topographical and Cadastral map derived from LINZ data.