

# Tenure Review of The Grampians Pastoral Lease – Substantive Proposal Designations Plan

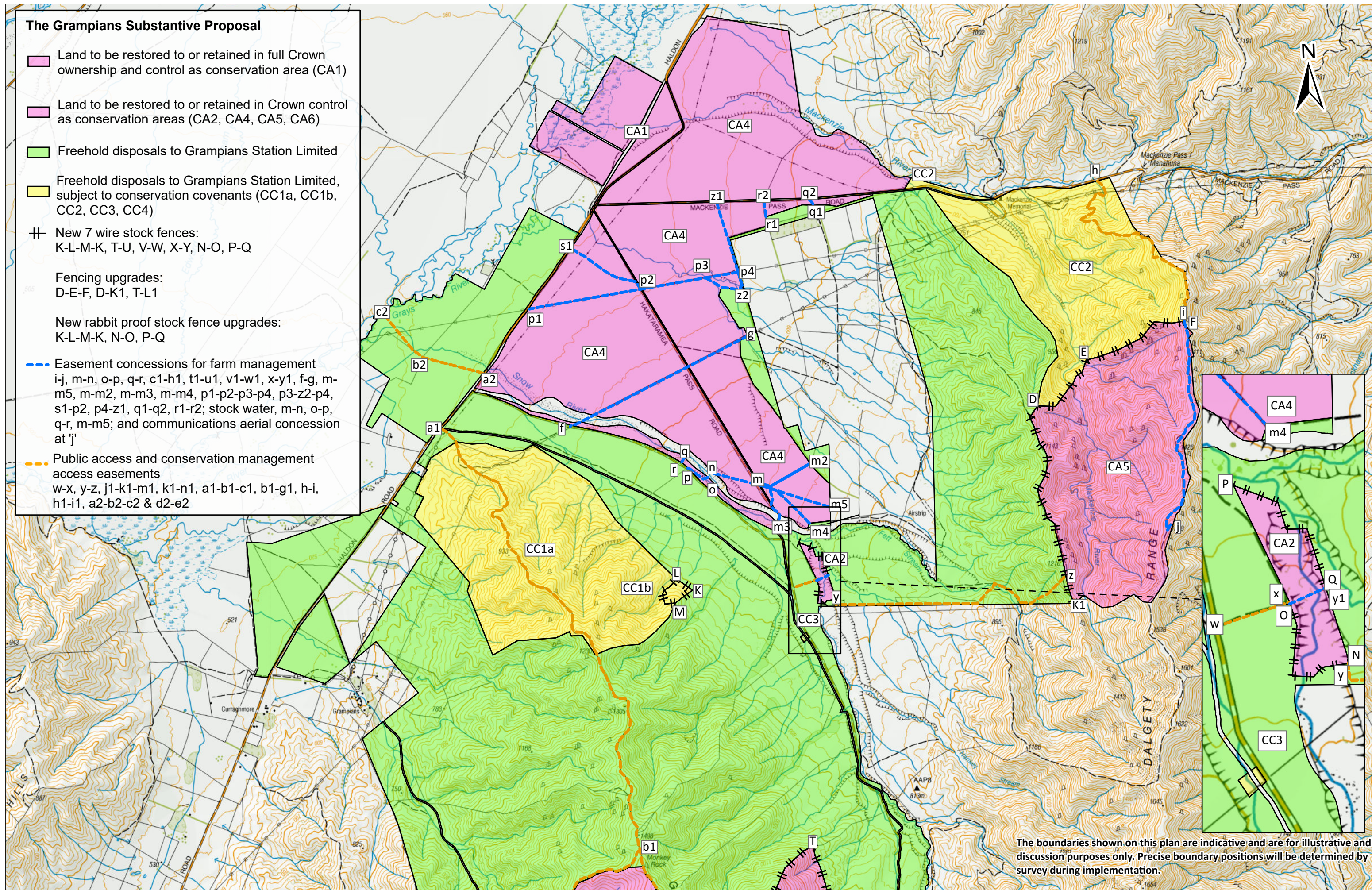


March 2021



# The Grampians Substantive Proposal

- Land to be restored to or retained in full Crown ownership and control as conservation area (CA1)
- Land to be restored to or retained in Crown control as conservation areas (CA2, CA4, CA5, CA6)
- Freehold disposals to Grampians Station Limited
- Freehold disposals to Grampians Station Limited, subject to conservation covenants (CC1a, CC1b, CC2, CC3, CC4)
- New 7 wire stock fences: K-L-M-K, T-U, V-W, X-Y, N-O, P-Q
- Fencing upgrades: D-E-F, D-K1, T-L1
- New rabbit proof stock fence upgrades: K-L-M-K, N-O, P-Q
- Easement concessions for farm management i-j, m-n, o-p, q-r, c1-h1, t1-u1, v1-w1, x-y1, f-g, m-m5, m-m2, m-m3, m-m4, p1-p2-p3-p4, p3-z2-p4, s1-p2, p4-z1, q1-q2, r1-r2; stock water, m-n, o-p, q-r, m-m5; and communications aerial concession at 'j'
- Public access and conservation management access easements w-x, y-z, j1-k1-m1, k1-n1, a1-b1-c1, b1-g1, h-i, h1-i1, a2-b2-c2 & d2-e2



The boundaries shown on this plan are indicative and are for illustrative and discussion purposes only. Precise boundary positions will be determined by survey during implementation.



