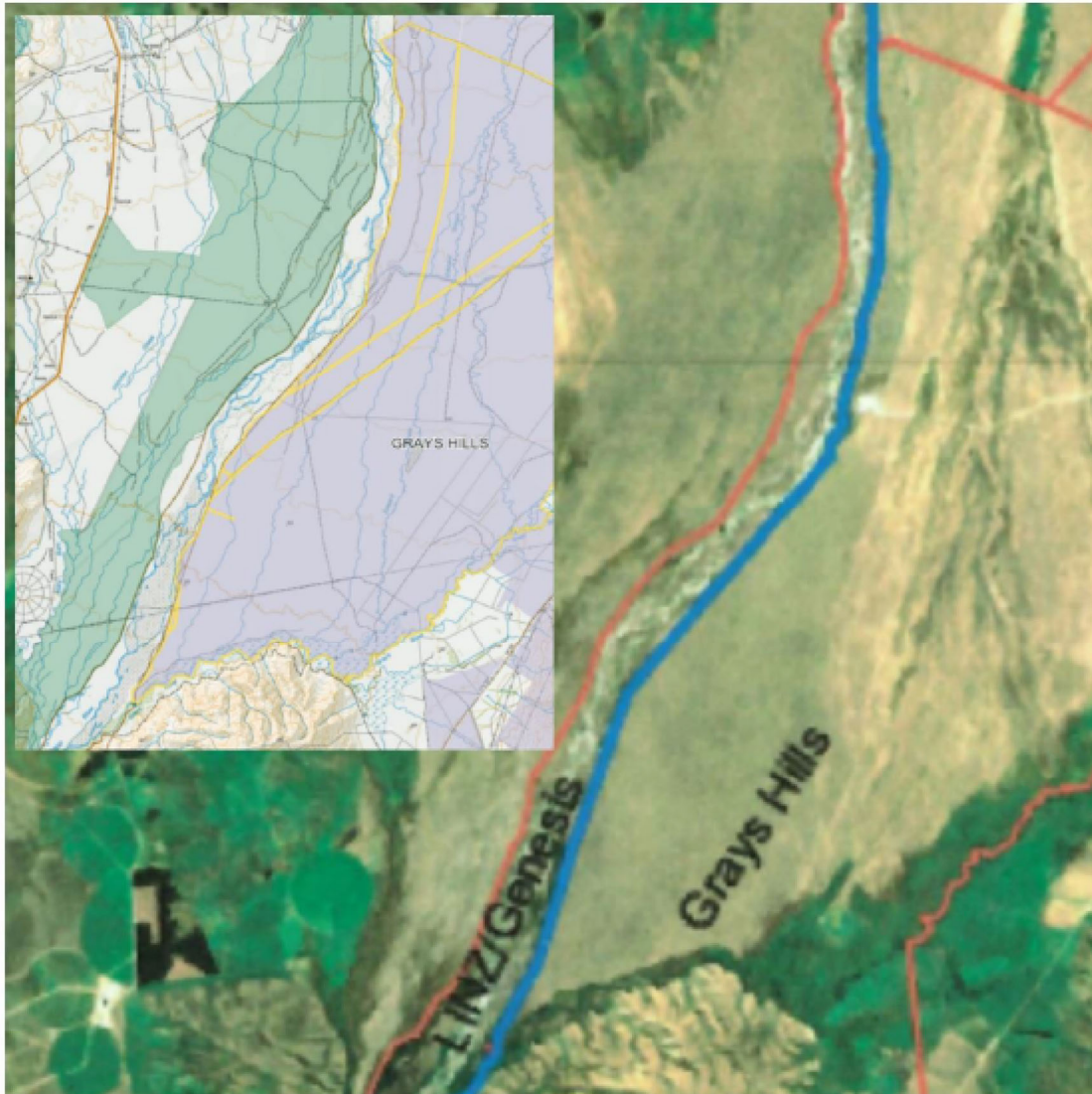


Operational Area



Note:

- Main image, indicative fence corridor over Grays Hills pastoral lease depicted in 'blue'
- Secondary image, TOPO of Gray Hills pastoral lease 'edged yellow and shaded grey'
- Grays Hills pastoral lease: north point X 1394957 / Y 5114240, south point X 1388630 / Y 5097874