

MĀORI INTEREST IN SURPLUS CROWN-OWNED LAND

Notice is hereby given that the properties owned by the Crown and its agencies described in the schedule below have been declared surplus by the Crown.

This schedule is published in order to operate the Māori Protection Mechanism and the Sites of Significance process established by the Government to protect specific Māori interests in surplus Crown-owned land. Iwi/hapu representatives are invited to inform the Office of Treaty Settlements and Takutai Moana – Te Tari Whakatau of specific interests they have in these properties, in accordance with the criteria set out on the forms for Landbanking and the Protection of Sites of Significance. Local iwi representatives known to the Office of Treaty Settlements and Takutai Moana – Te Tari Whakatau are being notified directly.

Submissions must be accompanied by the correct forms which can be obtained from the Office of Treaty Settlements and Takutai Moana – Te Tari Whakatau or at www.linz.govt.nz. Forms for the protection of Sites of Significance can also be obtained from the local office of Te Puni Kōkiri. Applications for both processes must be lodged with the Office of Treaty Settlements and Takutai Moana – Te Tari Whakatau at ProtectionMechanism@whakatau.govt.nz by **4.00 pm on 8 May 2026**.

Properties for which no submissions have been received by this date may be disposed of.

Contact: ProtectionMechanism@whakatau.govt.nz

SCHEDULE

NORTH AUCKLAND LAND DISTRICT

AK*101734 1272 m² Lot 1 Deposited Plan 172235 Record of Title NA105C/120
Circa 1912 villa containing three bedrooms. 4-6 Cove Road, Waipu.

SOUTH AUCKLAND LAND DISTRICT

HN*101723 738 m² Lot 31 Deposited Plan South Auckland 22843
Single storey three-bedroom dwelling. 61 James Henry Crescent, Huntly.

HN*101724 1017 m² Lot 1 Deposited Plan South Auckland 3916
Single storey 3-bedroom dwelling. 59 Russell Road, Huntly.

HN*101725 809 m² Lot 19 Deposited Plan South Auckland 4245
Three-bedroom two storey dwelling. 105 Russell Road, Huntly.

HN*101726 1134 m² Lot 284 Deposited Plan South Auckland 24504
Single storey three-bedroom dwelling. 3 Brownlie Crescent, Huntly.

HN*101727 1012 m² Lot 2 Deposited Plan South Auckland 7150
Single storey three-bedroom dwelling. 3 Bailey Street, Huntly.

HN*101728 1012 m² Lot 78 Block IV Deposited Plan South Auckland 9386
Single storey three-bedroom dwelling. 62 Bailey Street, Huntly.

HN*101729 903 m² Lot 317 Deposited Plan South Auckland 25985
Single storey three-bedroom dwelling. 27 Rosser Street, Huntly.

HN*101730 1012 m² Lot 10 Deposited Plan South Auckland 4740
Two-bedroom single storey dwelling. 49 Russell Road, Huntly.

HN*101737 14.4613 hectares Sections 34, 35, 36 SO 572879 Part Record of Title 1202217 and
section 37 SO 572879 Record of Title 1202215.
Vacant lands. 221 Morrinsville Road, Hamilton.

WELLINGTON LAND DISTRICT

WN*101736 2.4281 hectares Lot 1 Deposited Plan 29303, Record
of Title WN5D/993.
Single storey 4-bedroom dwelling, self-contained flat and poultry shed. 312
Arapaepae Road, Levin.

4-6 Cove Road, Waipu

Lot 1 DP 172235
0.1272 ha



Google Earth

Image © 2026 Airbus
Image © 2026 CNES / Airbus

100 m



61 James Henry Crescent, Huntly

Lot 31 Deposited Plan South Auckland 22843

Legend



59 Russell Road, Huntly.

1017 m² Lot 1 Deposited Plan South Auckland 3916

Legend



Google Earth

Image © 2026 Airbus

80 m

105 Russell Road, Huntly

809 m² Lot 19 Deposited Plan South Auckland 4245

Legend



Google Earth

Image © 2026 Airbus

60 m



3 Brownlie Crescent, Huntly

1134 m² Lot 284 Deposited Plan South Auckland 24504

Legend

287
24504
0.860

6

Lot 263
DPS 24504
0.0759

Lot 262
DPS 24504
0.0690

4

2

Brownlie Crescent

Rosser Street

Brownlie Cres

Brownlie Cres

1

Lot 262
DPS 24504
0.0964

5

Lot 283
DPS 24504
0.1098

3

Lot 284
DPS 24504
0.1134

1

Lot 285
DPS 24504
0.1005

9

Lot 281
DPS 24504
0.1569

Lot 10
DPS 22841
0.0668

Google Earth

Image © 2026 Airbus

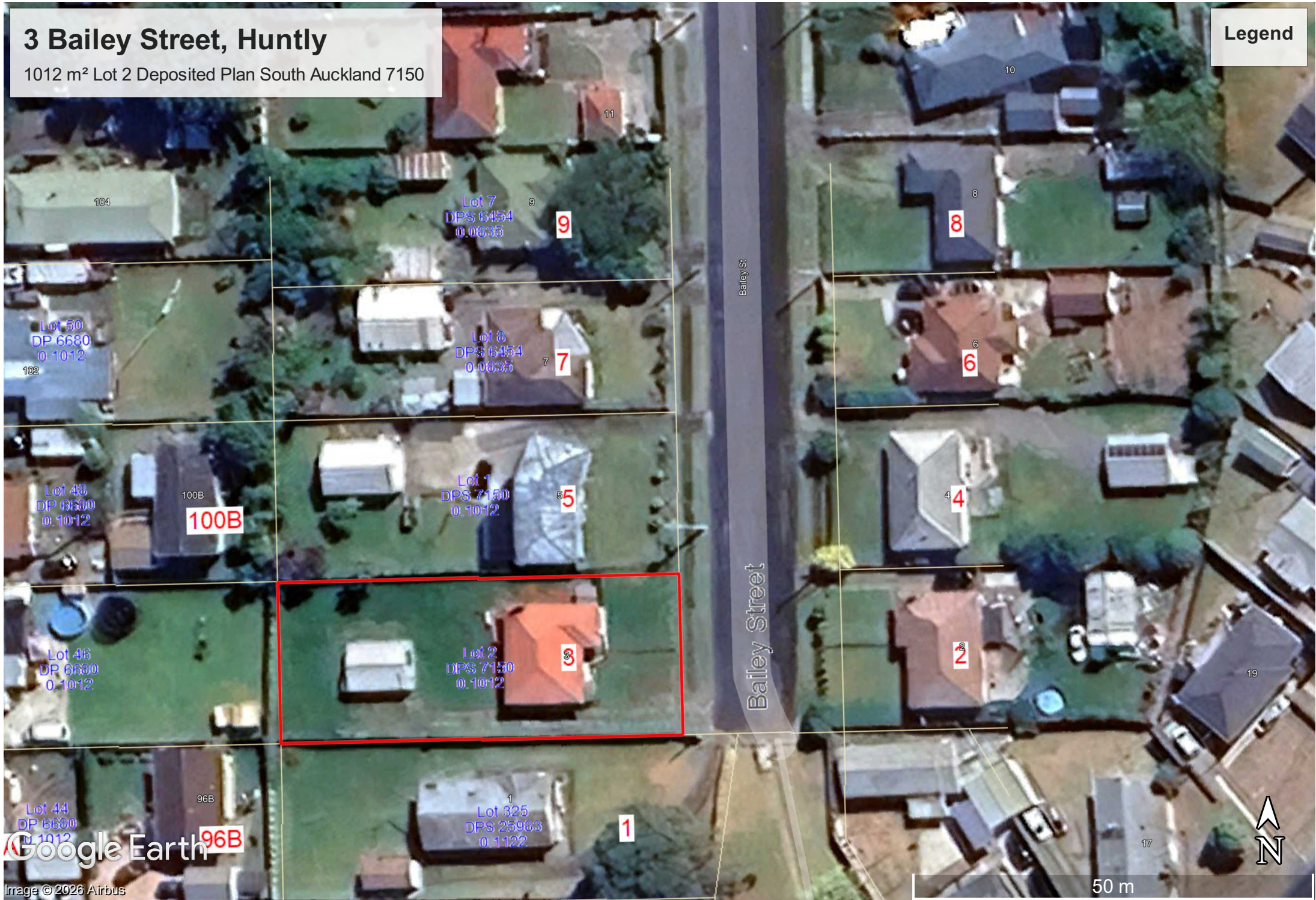


60 m

3 Bailey Street, Huntly

1012 m² Lot 2 Deposited Plan South Auckland 7150

Legend



Google Earth

Image © 2026 Airbus

50 m

62 Bailey Street, Huntly

1012 m² Lot 78 Block IV DP 9386

Legend



27 Rosser Street, Huntly

903 m² Lot 317 Deposited Plan South Auckland 25985

Legend



Google Earth

Image © 2026 Airbus

50 m



49 Russell Road, Huntly

1012 m² Lot 10 Deposited Plan South Auckland 4740

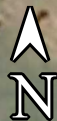
Legend



Google Earth

Image © 2026 Airbus

50 m



221 Morrinsville Road, Hamilton

Sections 34, 35, 36 SO 572879 7.9893 hectares, Part Record of Title 1202217 and section 37 SO 572879 6.4720 hectares Record of Title 1202215

Legend



Google Earth



400 m

312 Arapaepae Road, Levin

2.4281 hectares Lot 1 Deposited Plan 29303 Record of Title WN5D/993

Legend



Google Earth

Image © 2026 Airbus

100 m