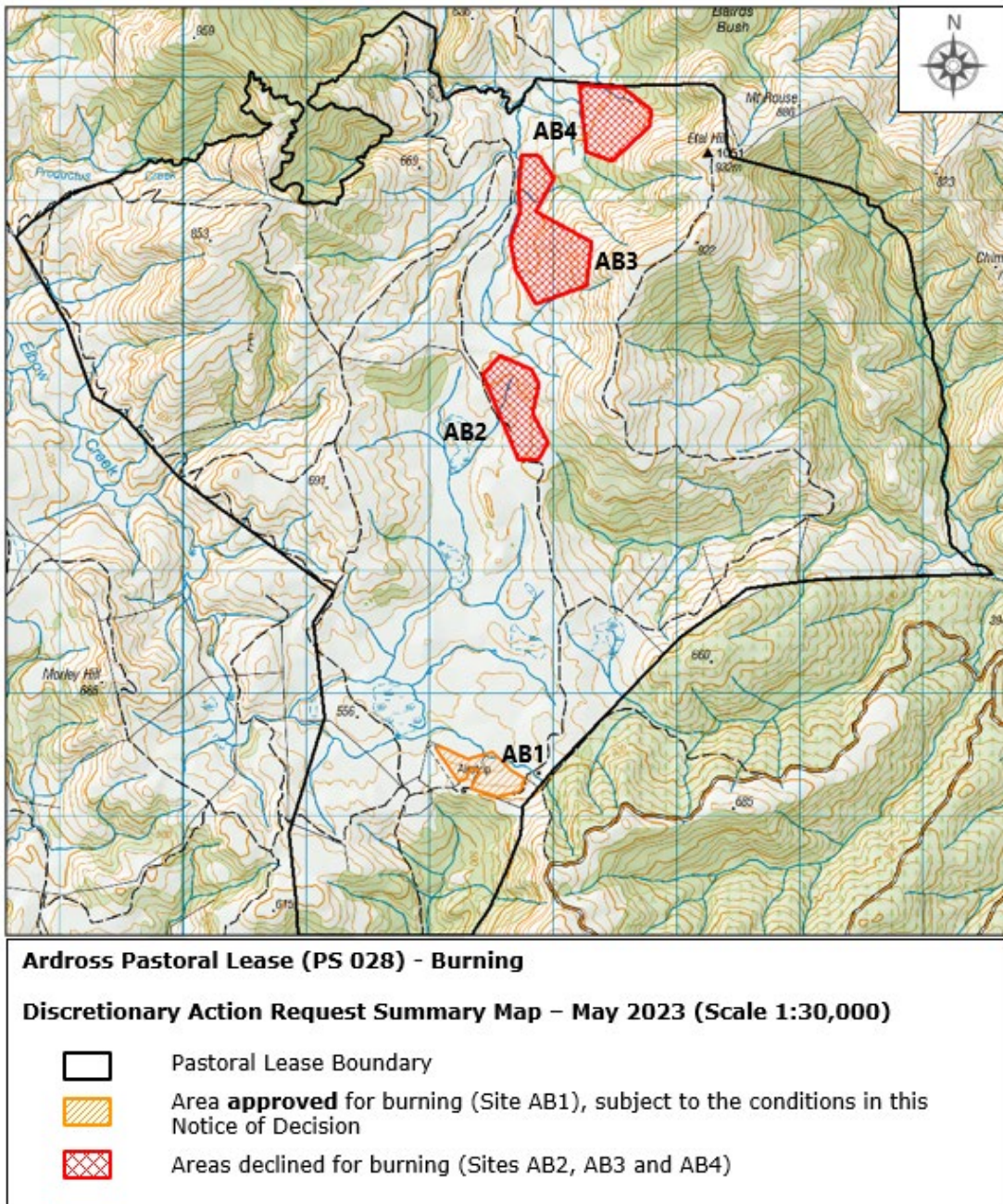


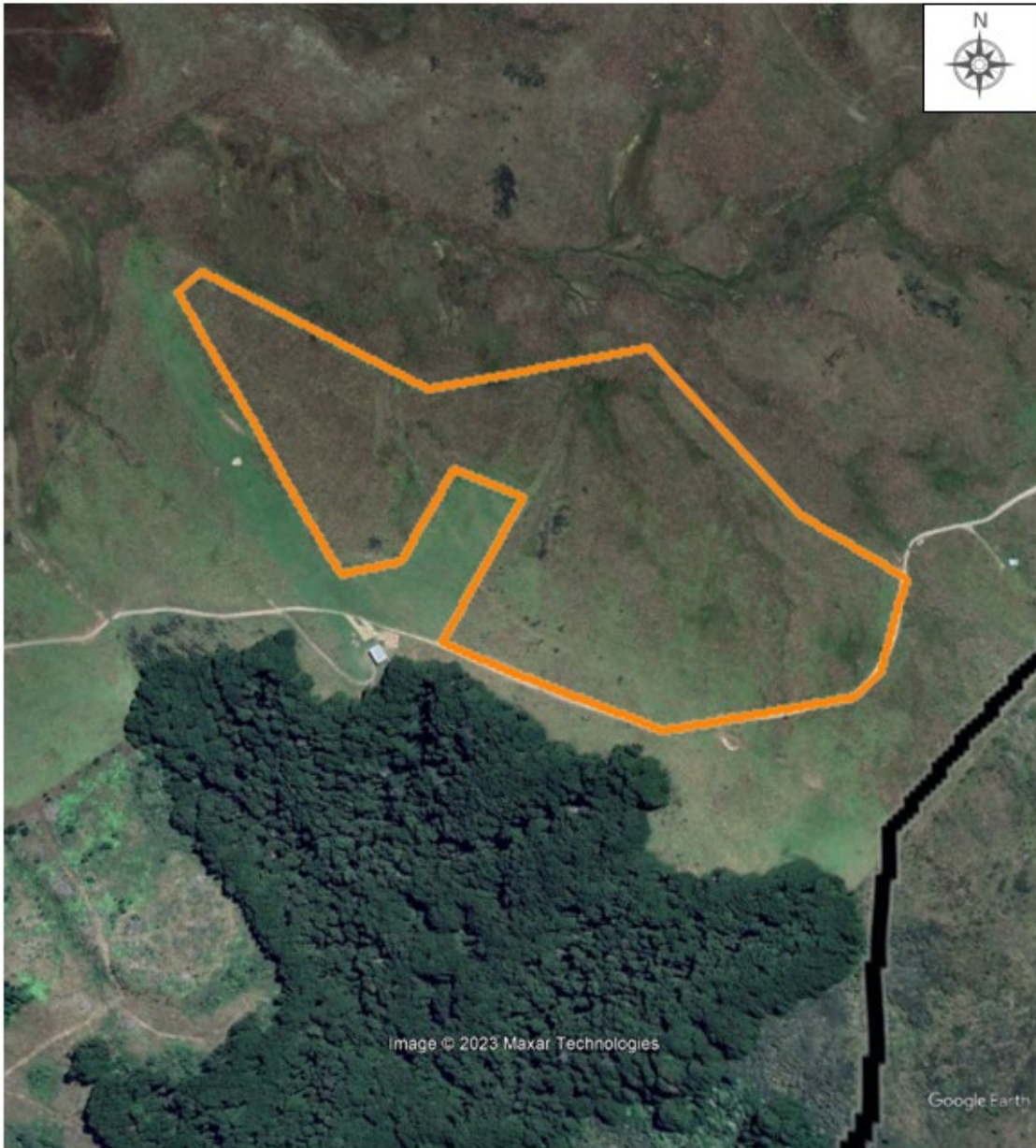
Operational Area – Burn

1. Topographical map showing the areas approved for burning on Ardross Station.



2. Google Earth image showing the area approved for burning on Ardross Station.

Site AB1



Ardross Pastoral Lease (PS 028) - Burning

Discretionary Action Request Summary Map – May 2023

-  Pastoral Lease Boundary
-  Area **approved** for burning (Site AB1), subject to the conditions in this Notice of Decision

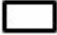

3. Google Earth image showing the areas declined for burning on Ardross Station.

Sites AB2, AB3 and AB4



Ardross Pastoral Lease (PS 028) - Burning

Discretionary Action Request Summary Map – May 2023

-  Pastoral Lease Boundary
-  Area **declined** for burning (Sites AB2, AB3 and AB4)