

## Install Landonline Client Components

**Purpose** Install the Landonline Client Components. These are required for running Landonline.

### 1) – Download Client Components

- CLICK to download [Landonline Client Components](#) (zip 227KB)

### 2) Download Screen

- A File Download screen will appear.
- Choose an appropriate file location where the download can be saved (note the location and filename)

#### Note

We recommend saving to an appropriate file location, so you will not need to download the installation file a second time.

### 3) Open File

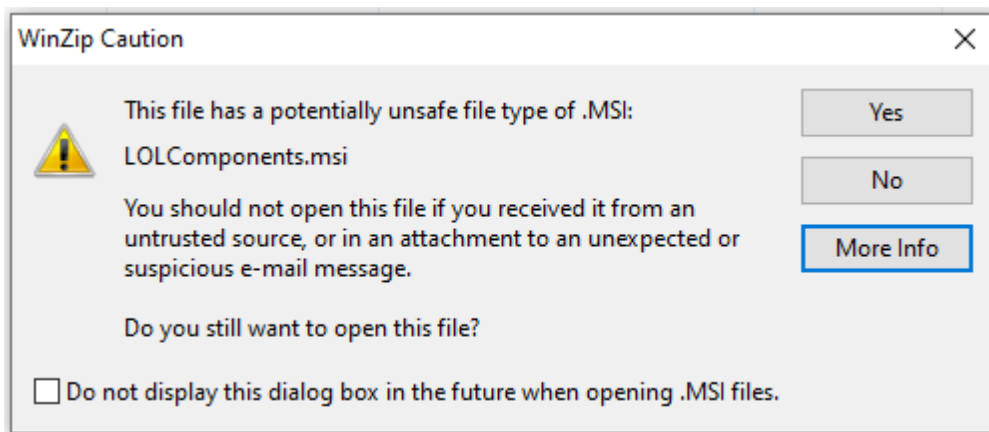
- Open the file from the new file location.

#### ALERT

You must log in with Administrator rights for this installation.

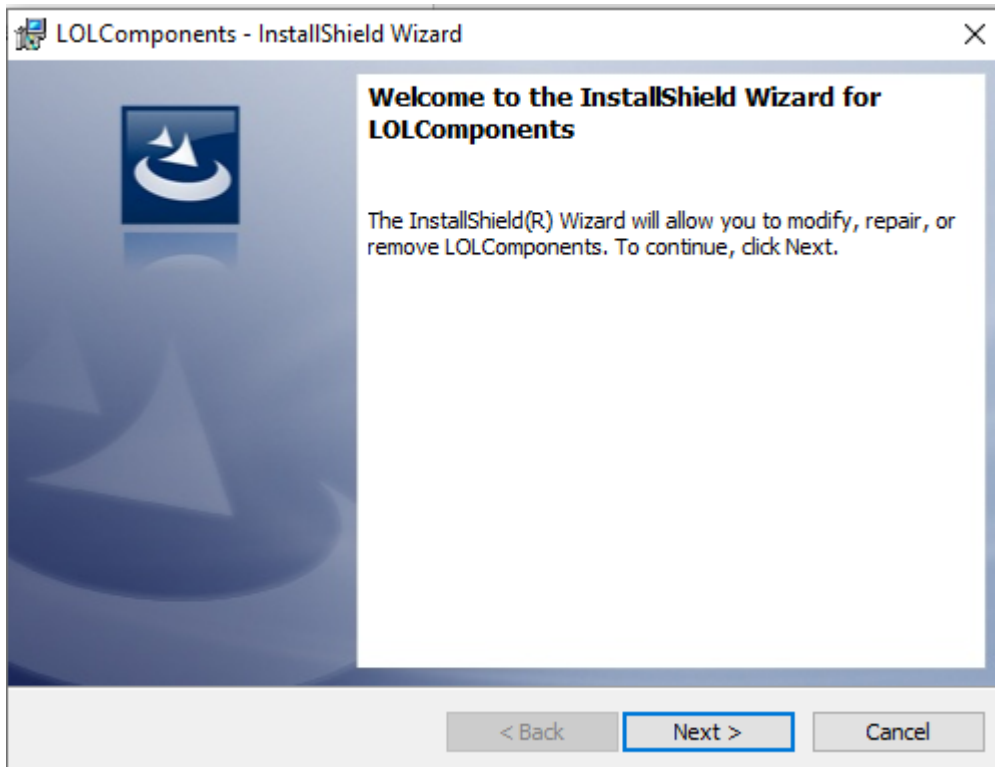
### 4) WinZip Caution

- If prompted with the Caution screen, click Yes to install, and run Landonline client components.

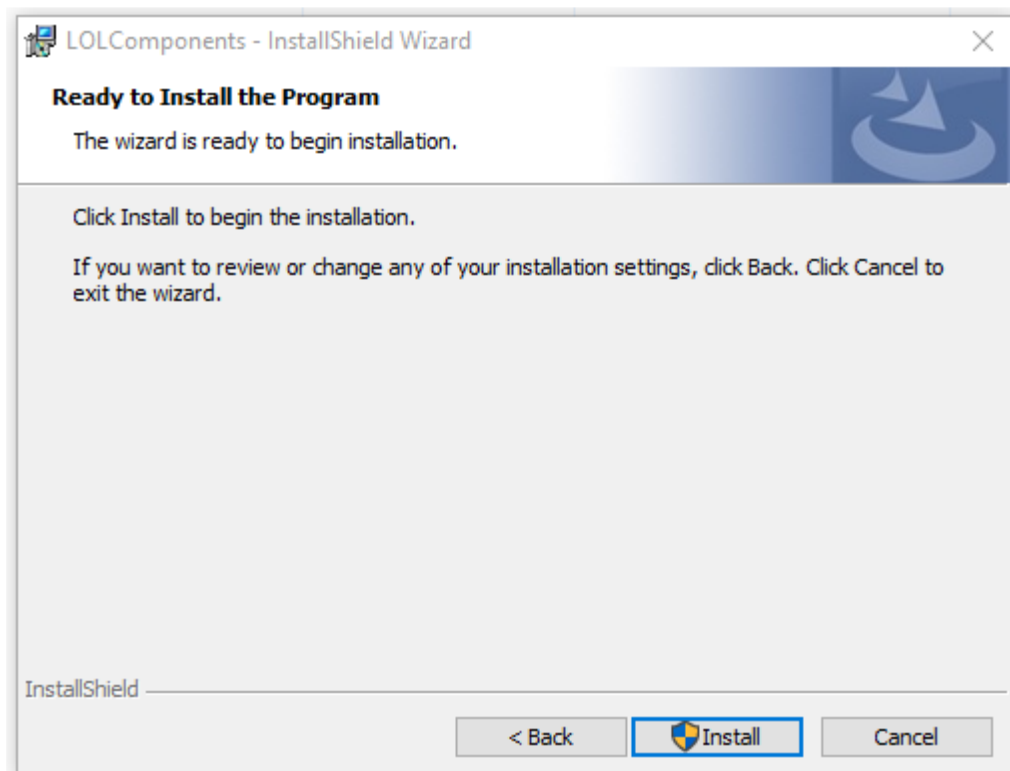


## 5) InstallShield Wizard

- Click Next on the Welcome InstallShield Wizard screen.

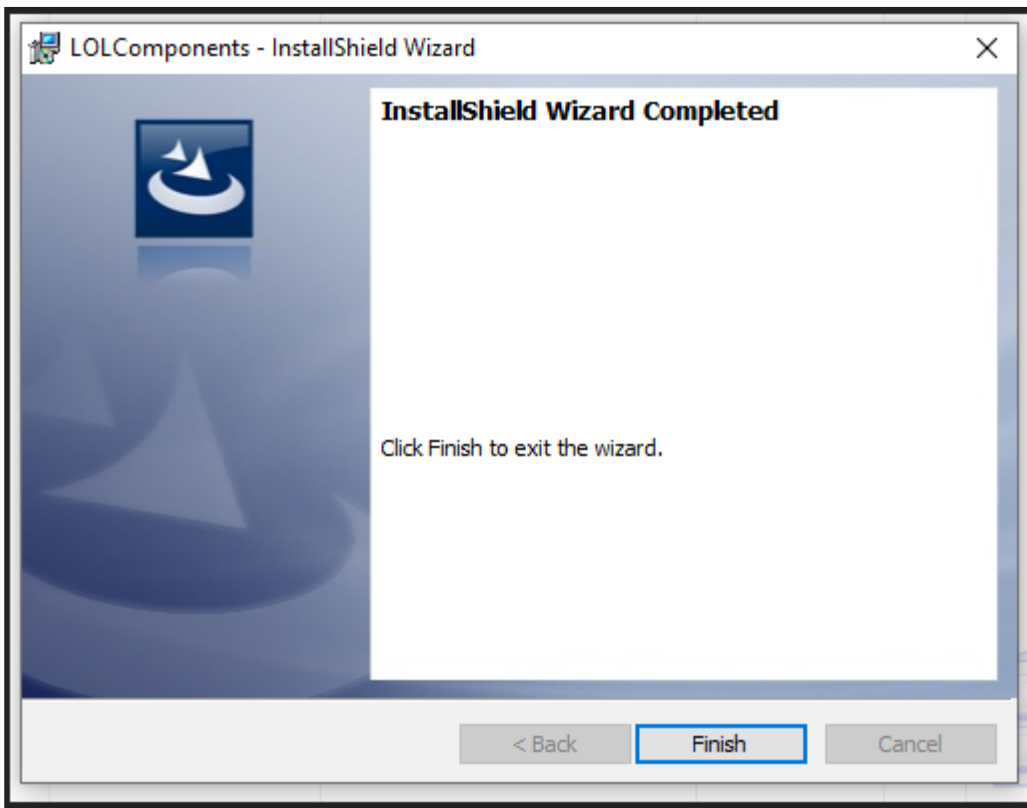


- Click **Install** and **log in with Administrator rights** for the installation.



## 6) Wizard Completion

- Click **Finish** to exit the installation of Landonline client components.



Continue to Next Step: [Software Downloads](#)