

Aotearoa Property Data Network

5th Quarterly Webinar- Meeting minutes

Meeting date	18/07/2023
Time	10-12pm
Venue	Teams meeting

Discussion items

Description

Welcome and opening karakia – Ben Reilly

Ran through the agenda.

Agenda

10am-10:05	Welcome and opening karakia
10:05-10:20	Toitū Te Whenua LINZ news and updates <i>various Toitū Te Whenua stakeholders</i>
10:20-10:40	Toitū Te Whenua LINZ - 'Joined-up Land Development' innovation initiative <i>Ben Reilly, Customer Relationship Manager – Property & Spatial Data</i>
10:40-11am	Te Kooti Whenua Māori Māori Land Court - Live demo of the newly launched Pātaka Whenua Māori Landonline <i>Zeniff Haika, Puna Kōrero Matua</i>
11am-11:55	Emergency management lightning talks Auckland Council – red/yellow stickering of properties after flood events GNS – assessing landslip risks to property Manaaki Whenua Landcare Research – Māori frameworks for recovery Toitū Te Whenua LINZ – emergency management data portal
11:55-12pm	Closing comments and karakia

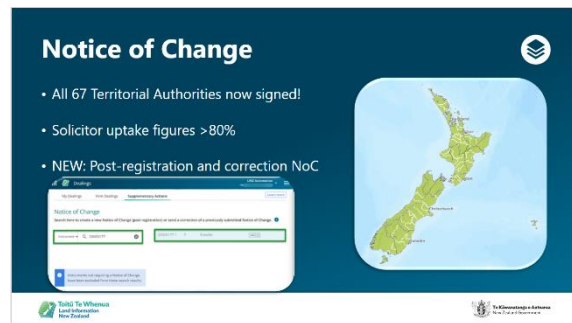
Toitū Te Whenua | LINZ news and updates

1. NoC update and post-registration NoC

(Recording start time – 2.33)

Notice of Change

- Big milestone, we have all 67 Territorial Authorities now signed up – National coverage.
- Uptake of NoC - solicitor uptake >80%.
- New enhancements come through the Modernising Landonline programme – post-registration and correction NoC. Solicitors can now make amendments to information after the initial NoC registration has gone through.



2. Connected Property Data - Michael Judd

(Recording start time – 4.05)

Couple of updates:

- **Hybrid layer*** gives you the best possible information on the property boundary that we can give you. Development work on this has now finished, should be available soon on the LDS –central and local government access restriction on it. Looking at making this boundary data sets wider available in the future.
- *(This is effectively what we are calling the best view of a property that we can deliver at the moment. It is effectively a unit of property layer, in-filled where there are gaps with titles from the property titles layer, and where there are *still* gaps in-filled with parcel data.)
- **NZ properties Data** we have added a **parent/child** table – links together properties where they are related to each other. For instance, where you have unit titled apartments that are all part of the same development.
- Have changed the Unique Identifier for our unit of property table. Introduced a UUID Universally Unique Identifier for NZ Properties.
- [Release 1.2 of PDMF published in May](#). Lessons learned from dwellings pilot with Stats NZ



3. Suburbs and Localities – Susan Shaw

(Recording start time – 8.00)

- **NZ Suburbs and Localities** has now been formally published on the LINZ data service – Published June 2023
- Have had great support from StatsNZ and we have been able to launch with a population estimate. Still working on the decimal places to make it work for a population count. Really appreciate that StatsNZ is going to maintain the population estimate going forward. It is using relatively old data at the moment (2018), basically a placeholder – can put the new census data in once it becomes available.
- Customers told us two things when we took responsibility for the data.
 1. Wanted a simplified data structure, and
 2. wanted to make it easier to request a change.



Key Dates

Wednesday 16 August 2023

- ✗ NZ Suburbs and Localities (Pilot)
- ✔ NZ Suburbs and Localities
- ✗ NZ Street Address
- ✔ NZ Addresses

November 2023

- ✗ NZ Localities

- **Key Dates** - We are looking to take down a few data sets – replace with data sets. Communications about this will be going out shortly. Normally try give people around 6 months to transition.

We have a page on the LINZ website (link below) that shows:

- NZ Suburbs and Localities - Data Dictionary,
- NZ Suburbs and Localities – Change Request,
- NZ Suburbs and Localities – Principles, Requirements and Rules.

Went through the Change Request Process. Showed the process for both minor and major changes that come through.

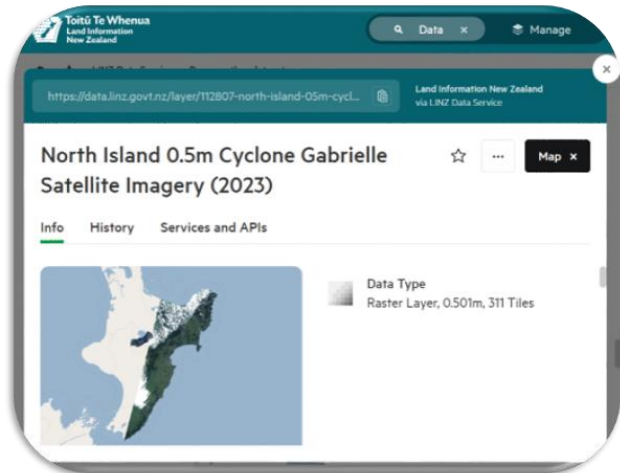
[LINZ website – Suburbs and localities data](#)

4. LINZ Data Service – Victoria Lindsay

(Recording start time – 13.02)

Late last month the LINZ Data Service rolled over to the new UI (User Interface). Happy to be on this new UI, been a long time coming. Some of the key new things:

- Ability to favourite (star) data sets.
- Ability to create multiple map views, which are like snapshots of different layers you have added over time.
- Export process is slightly different. More integrated now and there are a couple of ways to export data. Provides flexibility. APIs are integrated.



We have had lots of feedback, last few weeks. If you have any feedback, please send it in.

The new UI can support Point Cloud data. This is in the final testing stages (coming to LDS).

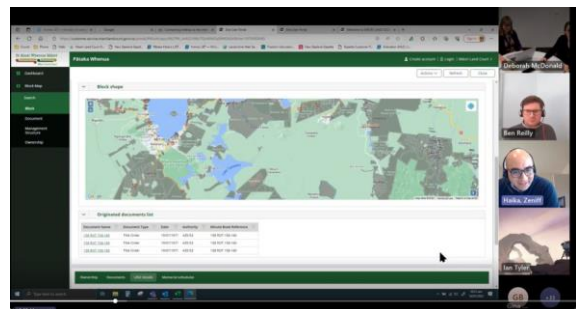
Pātaka Whenua

Te Kooti Whenua Māori | Māori Land Court - Zeniff Haika, Puna Kōrero Matua

(Recording start time – 17.50)

The Māori Land Court have recently rolled out Pātaka Whenua – online information system for the Māori Land Court. Pātaka Whenua replaces Māori Land Online.

Gave a live demonstration of the newly launched Pātaka Whenua and what you can do in Pātaka Whenua.



(Live demo of Pātaka Whenua recording start time 19.00)

Took us to the website homepage of Te Kooti Whenua Māori | Māori Land Court www.maorilandcourt.govt.nz .

Showed us how to get to Pātaka Whenua.

Showed the features that you can search by: Block, Document, Management Structure, Ownership.

Mentioned that they haven't released the documents. If you would like to see a specific document in the meantime, please send us an enquiry.

Block Map – this is similar to how it was on Māori Land Online can zoom into areas and find information about a particular block.

Contact **Zeniff Haika** with any questions: zeniff.haika@justice.govt.nz

'Joined-up Land Development' innovation initiative

Toitū Te Whenua | LINZ - Ben Reilly

(Recording start time – 39.00)

The Problem

Resource consenting is too hard and takes too long because it is disjointed, labour-intensive, and lacks transparency.

This leads to project congestion, additional costs, and prevents evidence-based decision-making.

No visibility of development pipeline for LINZ Property Rights teams, so cannot anticipate resourcing needs.



Joined-up Land Development is an innovation initiative that we are exploring here at LINZ.

Joined-up Land Development



Integrated land development process



Increase transparency



Promote efficiency



The goals of Joined up Land Development.

We are currently looking at overseas examples SPEAR and CORENET (Australia and Singapore)

Why LINZ?

- We are the stewards of the property system
 - We have strong stakeholder networks, across local councils, surveyors and property lawyers and professional networks.
-

- We play regulatory roles.
- IT build capability – LINZ has built inhouse capability through the Modernising Landonline programme so we can carry out IT development.

Problem definition and benefits-casing

We want to hear from:

- Central government agencies
- Te Ao Māori
- Local councils and associated authorities
- End-customers in land development
- Technology experts



Tools To Whomua
Land Information
New Zealand

Te Kaitiaki Take Kōwhiri
New Zealand Government

We are exploring the benefits of a more joined-up approach to land development, and we are wanting to engage various stakeholders/ partners /customers (see slide below).

Indicative Roadmap for 2026 and beyond

Looking ahead

Our timeline going forward

2024-25	2025-26	2026-27	2027-28	2028-29	2029-30
Foundation <ul style="list-style-type: none"> Web Search Land Record Search Notice to Mortgage 	Building the foundation <ul style="list-style-type: none"> Desktop pilot central High volume instruments Land Transfer survey pilot 3D Cadastral Survey Data Model Survey creation tools 	Transition <ul style="list-style-type: none"> New self service experience New application available New application available Capture tools redeveloped 	Migration <ul style="list-style-type: none"> Investigate integrating some image only submittal types Enabling an increased amount of data entered from survey software Submit and approve a survey Council certifications Survey registration 	Enhancement <ul style="list-style-type: none"> All customers only using New Landonline (2025) Improve Māori Land Court digital Generate fully digital plans Improve submittal process 	Possible enhancements <ul style="list-style-type: none"> Increased digital data capture and automation Integration with third party software and council's consenting processes

Tools To Whomua
Land Information
New Zealand

Te Kaitiaki Take Kōwhiri
New Zealand Government

Requirements gathering > Design > Prorotype > Business case

Went over the Modernising Landonline project timeline.

Contact **Ben Reilly** with any questions:
breilly@linz.govt.nz

Emergency management lightning talks

Auckland Council – red/yellow stickering of properties after flood events

Jade Rutledge

GNS – assessing landslip risks to property

Chris Massey & Gerry Blair

Manaaki Whenua | Landcare Research – Māori frameworks for recovery

Dr Shaun Awatere

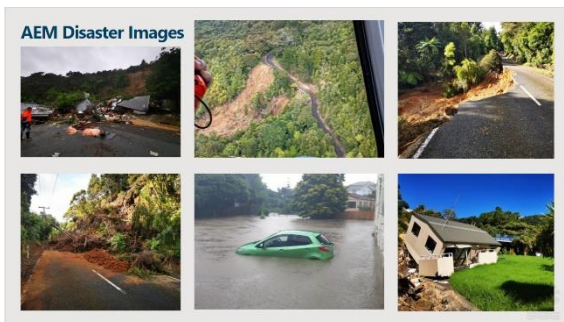
Toitū Te Whenua | LINZ – emergency management data portal

Rob Deakin

Auckland Council AEM – Rapid Building Assessment Placards red/yellow stickering of properties after flood events – Jade Ruthledge

(Recording start time – 39.00)

Ran through a ppt to show what Auckland Council AEM response was to the Rapid Building Assessment Placards for the emergencies we face



Auckland was hit with its first regional natural disaster (recent times) January 2023. Resulted in Mayor activating a State of Emergency – first time in Auckland’s history.

February we were hit by Cyclone Gabrielle, April localised tornado, May another flooding event.

During a State of Emergency, councils have access to MBIEs Survey 123 application for inspectors to do Rapid Building Assessments.

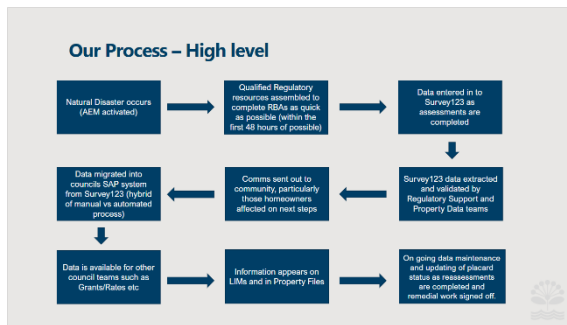
Talked through Placards: red/yellow/white stickering of properties after flood events –

Red placards, - Heavy damage – High Risk

Yellow placards – Moderate damage – Moderate Risk

White placard – Light to no damage – Low Risk





Showed the High-level Process of how data is collected by Auckland council to a Natural Disaster (Placard information data). Talked through the challenges they faced during the process.

Went over council's legal obligations for Property Files and LIMS and showed what a Rapid Building Assessment Document (used

the council naming standard for naming the Rapid Building Assessment Document for tracking purposes). Also had an example of wording to appear on a LIM would like in this situation.

Went over lessons learnt during these natural disaster events. *(See recording ppt slide Recording time 1:07:06)*

If have any questions contact Jade Rutledge: jade.rutledge@aucklandcouncil.govt.nz

Ben mentioned the SouthPan project LINZ is working on – help with GPS accuracy.

GNS Science Cyclone Gabrielle: Landslide response and recovery – Chris Massey & Gerry Blair

(not included in recording)

Gave an overview of some of the work that they have been doing – mapping the landslide distribution from Cyclone Gabrielle and Auckland January flood funded by MB under the extreme weather research platform. Huge team effort – agencies/organisations involved: University of Canterbury, University of Auckland, Landcare Research and GNS Science.

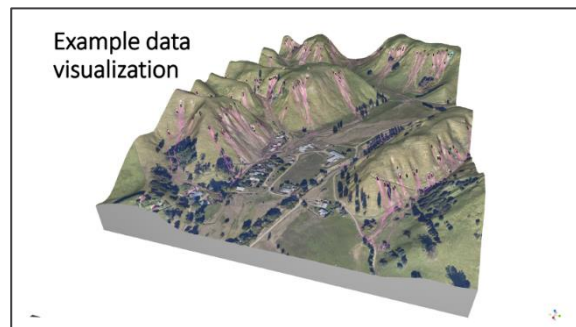
Why map landslide.

- Many landslides occurred – destroying infrastructure and lives. Currently mapped 91,000 land slides
- End users need to know where these landslides are and where landslides could occur in the future (further rain/earthquake events)
- Use data for developing rainfall induced landslide (RIL) forecast tool, hazard, risk models.

Took us through the Projects five phases:

1. Response - landslide modelling/forecasting before event occurred.

2. Remote sensing – pre and post imagery
3. Landslide mapping and modelling
4. Site specific analyses
5. Landslide hazard forecasting



Once event occurred, we went to five areas to document landslide. Intelligence gathering. Used landslide photo and media.

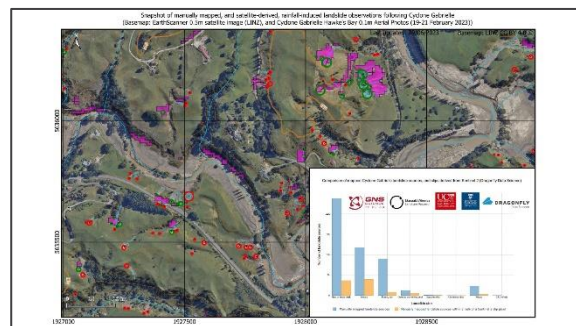
Currently in the process of mapping of landslides –this gets updated every 24hrs.

If would like access to the landslide distributions get in touch with Chris Massey.

Post event imagery – tried various process to map landslides. Trained automated landslide mapping but not accurate.

Needed to prioritise where to map landslides first (talked to end users).

Population density and lifeline infrastructure top priority.



Forecasting: landslide hazards – carrying out model training to help with forecasting.

Contact details Chris Massey. – c.massey@gns.cri.nz

What is the place of Māori land and property data within disaster recovery?

Dr Shaun Awatere - Manaaki Whenua | Landcare Research

(Recording start time – 1:13:36)

Understanding the context is useful for understanding how the data can be used for decision making processes.

Questions to ask:

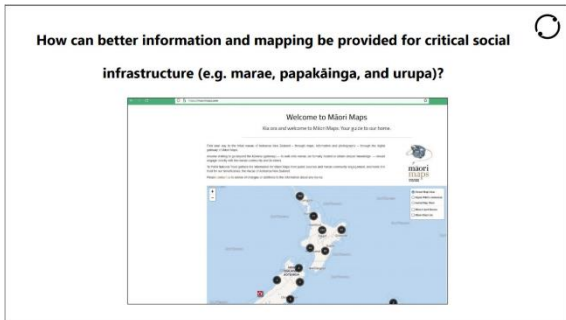
Are we acknowledging the rights and interests of Māori in the decision making?

- Are we critically analysing our policy solutions? Is it a one size fit all approach, or does it have flexibility/adaptability? Is it based on assumptions like individual property rights?

- Does the policy approach consider the collective wellbeing, not only tangible aspects but also the intangible and spiritual as well.

If it is solely focus on primary production, population density, areas that are more vulnerable will be missed.

How can better information and mapping be provided for critical social infrastructure (e.g. marae, papakāinga, and urupa)?



Support can be provided in a number of ways, access to data sets. Basic analysis of property data and overlay with flood mapping tools, making data portals more accessible for communities.

Currently it is set up primarily for individual property owners. But how can we set this up for solutions or approaches for communities

that are having to deal with thinking about relocating their marae, papakāinga, and urupa.

How do we define and map local communities, the people, land and properties within their boundaries?

As a starting point Te Puni Kōkiri has great map of Iwi boundaries. Good place to start conversations with Hapu and Iwi. Also the Māori Data Governance Model.



Summary

National data sets have a place and a role in resource management and disaster recovery, especially when information is up to date and complete. However, when dealing with local knowledge particular in Māori data, often it is locally specific, context specific, incomplete, and asymmetric in form. This means that you need to come up with bespoke solution for the decision-making processes. Good to support approaches that will empower Hapū and Iwi in those decision-making processes.

Toitū Te Whenua | LINZ – Common Operational Dataset for Emergency Management – Improved data sharing for emergency – Rob Deakin

(Recording start time – 1:28:18)

This work was born out of the back of the covid response. Wanted to improve our ability for data sharing to support decision making, during response and recovery but also other phases of emergency management.



Challenges are:

- Not knowing who has what information and how to get hold of it.
- Reinvent the wheel every time we get an emergency.

A shared goal

"Quality geospatial information and services are available and accessible in a timely and coordinated way to support decision-making and operations within and across all sectors and phases of the emergency cycle"

Strategic Framework on Geospatial Information and Services for Disasters, UN-GGIM, 2017



Goal:

To identify how we make geospatial information more accessible before, during and after emergencies for those who need it.

Set up a project team to work on the goal. Carried out a Research and Design phase.

Our Solution:

- Find data easily
- Trust data is valid
- Before they need it
- Share Data easily
- Promote use of data.

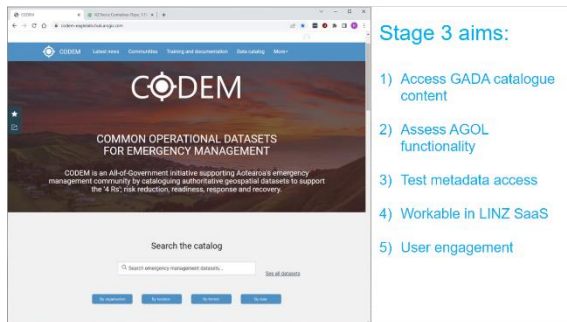
Our solution

Find data easily	Trust data is valid	Before they need it	Share data easily	Promote use of data
------------------	---------------------	---------------------	-------------------	---------------------

A solution in five parts:

- Web based catalogue

- Curated data collections
- Data sharing agreements
- Data Standards (important for more wide spread use)
- Communities of Practice



CODEM – Common Operational Datasets for Emergency Management.

Can set up a separate session to demo the prototype.

Currently testing prototype solutions (next 12 months continue prototyping)

Any questions?

Do you want to help test the prototype?
Do you have datasets you'd like to share?

Please contact me:
rdeakin@linz.govt.nz

Closing comments
