



Record of Survey - DP 581515

Survey Number DP 581515
Surveyor Reference 2317656 Atiamuri Substation
Surveyor Vicki Leigh Webster
Survey Firm Beca Limited
Surveyor Declaration I Vicki Leigh Webster, being a licensed cadastral surveyor, certify that--
(a) this dataset provided by me and its related survey are accurate, correct and in accordance with the Cadastral Survey Act 2002 and Cadastral Survey Rules 2021; and
(b) the survey was undertaken by me or under my personal direction.
Declared on 12 Aug 2024 03:10 PM

Survey Details

Dataset Description AREA 1 ON SECTION 22 SO 514338
Purpose Lease
Status Deposited **Type** Survey
Land District South Auckland **Survey Class** Class B
Meridional Circuit Mount Eden 2000 **Vertical Datum** None

Survey Dates

Surveyed Date 27/02/2024 **Certified Date** 12/08/2024
Submitted Date 12/08/2024 15:10:13 **Survey Approval Date** 13/08/2024
Deposit Date 14/04/2025

Referenced Surveys

Survey Number	Land District	Bearing Correction
SO 51471	South Auckland	0°00'00"
DPS 61119	South Auckland	0°00'00"
SO 59579	South Auckland	0°00'00"
SO 514338	South Auckland	0°00'00"
DP 324603	South Auckland	0°00'00"

Territorial Authorities

South Waikato District
Taupo District

Comprised In

RT 949685

Created Parcels

Parcels	Parcel Intent	Area	RT Reference
Area 1 Deposited Plan 581515	Lease	0.1740 Ha	1198467
Area A Deposited Plan 581515	Easement		
Area B Deposited Plan 581515	Easement		
Area C Deposited Plan 581515	Easement		
Total Area		0.1740 Ha	

Mark and Vector

Survey Number DP 581515
Meridional Circuit Mount Eden 2000

From	To	Code	Bearing	Adpt Surv	Bearing Correction	Distance	Adpt Surv	Class
BLOCK 2	VILLAGE 2 SO 51471	ob87	113°52'40"	M		286.53 M		
VILLAGE 2 SO 51471	IT I SO 56210	ob82	16°31'00"	M		54.80 M		
IT I SO 56210	BLOCK 2	ob85	282°52'20"	M		284.76 M		
BLOCK 2	IS 100 DP 581515	ob88	148°10'00"	M		38.66 M		
IS 100 DP 581515	IS 200 DP 581515	ob7	176°22'00"	M		103.90 M		
IS 200 DP 581515	MWD BLOCK 3 SO 59579	ob11	33°16'00"	M		77.19 M		
MWD BLOCK 3 SO 59579	BLOCK 2	ob89	316°05'00"	M		99.93 M		
IS 100 DP 581515	MWD BLOCK 3 SO 59579	ob8	128°40'00"	M		62.65 M		
VILLAGE 2 SO 51471	IS IV SO 51471	ob83	279°18'39"	A SO 51471	0°00'00"	1,270.83 A	SO 51471	
IS IV SO 51471	AN 01	ob1	161°29'30"	A SO 51471	0°00'00"	45.64 A	SO 51471	
AN 01	BLOCK 2	ob0	92°42'50"	A SO 514338	0°00'00"	978.67 A	SO 514338	
MWD BLOCK 3 SO 59579	IS I SO 59579	ob90	104°56'40"	A SO 59579	0°00'00"	197.34 A	SO 59579	
IS I SO 59579	VILLAGE 2 SO 51471	ob6	16°31'00"	A SO 59579	0°00'00"	7.20 A	SO 59579	
VILLAGE 2 SO 51471	IS II SO 59579	ob84	277°33'40"	A SO 59579	0°00'00"	347.08 A	SO 59579	
IS II SO 59579	Pillar SO 59579	ob2	316°00'30"	A SO 59579	0°00'00"	92.19 A	SO 59579	
Pillar SO 59579	HOLE III SO 59579	ob4	50°57'30"	A SO 59579	0°00'00"	110.50 A	SO 59579	
HOLE III SO 59579	MWD BLOCK 3 SO 59579	ob5	136°43'00"	A SO 59579	0°00'00"	189.00 A	SO 59579	
IS 100 DP 581515	PEG 1 DP 581515	ob9	212°35'00"	M		34.98 M		
PEG 1 DP 581515	PEG 2 DP 581515	ob12	130°32'20"	C		51.18 C		Class B
PEG 2 DP 581515	MWD BLOCK 3 SO 59579	ob13	50°44'00"	M		37.28 M		
PEG 2 DP 581515	UNMK 25 DP 581515	ob14	220°51'00"	C		0.99 C		Class B
UNMK 25 DP 581515	UNMK 26 DP 581515	ob47	220°51'00"	C		7.82 C		Class B
UNMK 26 DP 581515	PEG 3 DP 581515	ob49	220°51'00"	C		25.25 C		Class B
PEG 3 DP 581515	IS 200 DP 581515	ob15	149°53'00"	M		17.55 M		
PEG 3 DP 581515	PEG 4 DP 581515	ob16	310°28'00"	C		50.95 C		Class B

Mark and Vector

Survey Number DP 581515
Meridional Circuit Mount Eden 2000

From	To	Code	Bearing	Adpt Surv	Bearing Correction	Distance	Adpt Surv	Class
PEG 4 DP 581515	IS 200 DP 581515	ob17	135°25'00"	M		67.75 M		
PEG 4 DP 581515	UNMK 5 DP 581515	ob18	40°27'00"	C		14.51 C		Class B
UNMK 5 DP 581515	UNMK 6 DP 581515	ob19	40°27'00"	C		3.51 C		Class B
UNMK 6 DP 581515	UNMK 7 DP 581515	ob21	40°27'00"	C		10.67 C		Class B
UNMK 7 DP 581515	UNMK 8 DP 581515	ob23	40°27'00"	C		3.54 C		Class B
UNMK 8 DP 581515	PEG 1 DP 581515	ob25	40°27'00"	C		1.89 C		Class B
IS II SO 59579	PEG (4) SO 59579	ob3	18°47'00"	A SO 59579	0°00'00"	3.26 A SO 59579		
PEG (4) SO 59579	UNMK 9 DP 581515	ob27	46°16'00"	A SO 59579	0°00'00"	41.49 C		
UNMK 9 DP 581515	UNMK 10 DP 581515	ob29	46°16'00"	A SO 59579	0°00'00"	3.50 C		Class B
UNMK 10 DP 581515	UNMK 11 DP 581515	ob30	46°16'00"	A SO 59579	0°00'00"	28.49 C		
UNMK 11 DP 581515	UNMK 12 DP 581515	ob31	46°16'00"	A SO 59579	0°00'00"	3.61 C		Class B
UNMK 12 DP 581515	PEG (3) SO 59579	ob32	46°16'00"	A SO 59579	0°00'00"	2.17 C		
PEG (3) SO 59579	IS II SO 59579	ob28	225°13'00"	A SO 59579	0°00'00"	82.17 A SO 59579		
IT I SO 56210	PEG (4) DPS 61119	ob86	145°20'00"	A DPS 61119	0°00'00"	39.55 A DPS 61119		
PEG (4) DPS 61119	UNMK 23 DP 581515	ob43	35°04'00"	A DPS 61119	0°00'00"	3.16 C		
UNMK 23 DP 581515	UNMK 24 DP 581515	ob45	35°04'00"	A DPS 61119	0°00'00"	7.03 C		Class B
UNMK 24 DP 581515	PEG (25) DPS 61119	ob46	35°04'00"	A DPS 61119	0°00'00"	4.96 C		
PEG (25) DPS 61119	IT I SO 56210	ob44	302°50'00"	A DPS 61119	0°00'00"	37.13 A DPS 61119		
UNMK 5 DP 581515	UNMK 9 DP 581515	ob20	314°08'40"	C		55.54 C		Class B
UNMK 6 DP 581515	UNMK 10 DP 581515	ob22	314°08'40"	C		55.19 C		Class B
UNMK 7 DP 581515	UNMK 13 DP 581515	ob24	318°36'00"	C		28.31 C		Class B
UNMK 13 DP 581515	UNMK 14 DP 581515	ob33	353°41'00"	C		9.68 C		Class B
UNMK 14 DP 581515	UNMK 15 DP 581515	ob34	341°42'00"	C		11.35 C		Class B
UNMK 15 DP 581515	UNMK 16 DP 581515	ob35	331°25'00"	C		2.40 C		Class B

Mark and Vector

Survey Number DP 581515
Meridional Circuit Mount Eden 2000

From	To	Code	Bearing	Adpt Surv	Bearing Correction	Distance	Adpt Surv	Class
UNMK 16 DP 581515	UNMK 17 DP 581515	ob36	359°11'00"	C		3.85 C		Class B
UNMK 17 DP 581515	UNMK 11 DP 581515	ob37	330°12'00"	C		2.79 C		Class B
UNMK 8 DP 581515	UNMK 18 DP 581515	ob26	318°36'00"	C		26.70 C		Class B
UNMK 18 DP 581515	UNMK 19 DP 581515	ob38	353°41'00"	C		8.94 C		Class B
UNMK 19 DP 581515	UNMK 20 DP 581515	ob39	341°42'00"	C		12.03 C		Class B
UNMK 20 DP 581515	UNMK 21 DP 581515	ob40	331°25'00"	C		1.85 C		Class B
UNMK 21 DP 581515	UNMK 22 DP 581515	ob41	359°11'00"	C		3.89 C		Class B
UNMK 22 DP 581515	UNMK 12 DP 581515	ob42	330°12'00"	C		4.57 C		Class B
UNMK 25 DP 581515	UNMK 27 DP 581515	ob48	147°18'00"	C		6.29 C		Class B
UNMK 27 DP 581515	UNMK 28 DP 581515	ob51	180°45'00"	C		6.03 C		Class B
UNMK 28 DP 581515	UNMK 29 DP 581515	ob52	214°46'00"	C		13.14 C		Class B
UNMK 29 DP 581515	UNMK 30 DP 581515	ob53	216°27'00"	C		13.97 C		Class B
UNMK 30 DP 581515	UNMK 31 DP 581515	ob54	214°59'00"	C		3.98 C		Class B
UNMK 31 DP 581515	UNMK 32 DP 581515	ob55	208°10'00"	C		3.94 C		Class B
UNMK 32 DP 581515	UNMK 33 DP 581515	ob56	153°51'00"	C		0.98 C		Class B
UNMK 33 DP 581515	UNMK 34 DP 581515	ob57	89°21'40"	C		93.10 C		Class B
UNMK 34 DP 581515	UNMK 35 DP 581515	ob58	84°32'00"	C		7.96 C		Class B
UNMK 35 DP 581515	UNMK 36 DP 581515	ob59	64°49'00"	C		12.01 C		Class B
UNMK 36 DP 581515	UNMK 37 DP 581515	ob60	49°40'00"	C		27.16 C		Class B
UNMK 37 DP 581515	UNMK 38 DP 581515	ob61	71°26'00"	C		12.18 C		Class B
UNMK 38 DP 581515	UNMK 39 DP 581515	ob62	78°31'00"	C		21.43 C		Class B
UNMK 39 DP 581515	UNMK 40 DP 581515	ob63	78°43'20"	C		75.68 C		Class B
UNMK 40 DP 581515	UNMK 41 DP 581515	ob64	74°04'00"	C		8.98 C		Class B
UNMK 41 DP 581515	UNMK 42 DP 581515	ob65	48°09'00"	C		22.06 C		Class B

Mark and Vector

Survey Number DP 581515
Meridional Circuit Mount Eden 2000

From	To	Code	Bearing	Adpt Surv	Bearing Correction	Distance	Adpt Surv	Class
UNMK 42 DP 581515	UNMK 24 DP 581515	ob66	129°52'00"	C		23.31 C		Class B
UNMK 26 DP 581515	UNMK 43 DP 581515	ob50	147°17'00"	C		1.82 C		Class B
UNMK 43 DP 581515	UNMK 44 DP 581515	ob67	187°10'00"	C		2.48 C		Class B
UNMK 44 DP 581515	UNMK 45 DP 581515	ob68	216°40'00"	C		9.77 C		Class B
UNMK 45 DP 581515	UNMK 46 DP 581515	ob69	216°27'00"	C		12.59 C		Class B
UNMK 46 DP 581515	UNMK 47 DP 581515	ob70	222°10'00"	C		5.43 C		Class B
UNMK 47 DP 581515	UNMK 48 DP 581515	ob71	238°03'00"	C		14.44 C		Class B
UNMK 48 DP 581515	UNMK 49 DP 581515	ob72	244°21'00"	C		3.83 C		Class B
UNMK 49 DP 581515	UNMK 50 DP 581515	ob73	179°55'00"	C		7.00 C		Class B
UNMK 50 DP 581515	UNMK 51 DP 581515	ob74	89°21'40"	C		145.40 C		Class B
UNMK 51 DP 581515	UNMK 52 DP 581515	ob75	39°10'00"	C		26.09 C		Class B
UNMK 52 DP 581515	UNMK 53 DP 581515	ob76	63°51'00"	C		18.11 C		Class B
UNMK 53 DP 581515	UNMK 54 DP 581515	ob77	79°00'40"	C		68.29 C		Class B
UNMK 54 DP 581515	UNMK 55 DP 581515	ob78	79°43'00"	C		22.10 C		Class B
UNMK 55 DP 581515	UNMK 56 DP 581515	ob91	57°59'00"	C		9.20 C		Class B
UNMK 56 DP 581515	UNMK 57 DP 581515	ob79	47°58'00"	C		12.16 C		Class B
UNMK 57 DP 581515	UNMK 58 DP 581515	ob80	89°48'00"	C		5.07 C		Class B
UNMK 58 DP 581515	UNMK 23 DP 581515	ob81	129°53'00"	C		13.53 C		Class B
IS 100 DP 581515	PEG 2 DP 581515	ob10	162°16'00"	M		65.87 M		

Mark Name	Mark Condition	Description
BLOCK 2		Stainless steel pin in conc block
IS 100 DP 581515		Iron spike down 0.1m in ground
IS 200 DP 581515		Iron spike down 0.1m in ground
IT I SO 56210		Iron tube down 0.1m in ground
MWD BLOCK 3 SO 59		Stainless steel pin in conc block



Mark and Vector

Survey Number DP 581515
Meridional Circuit Mount Eden 2000

Mark Name	Mark Condition	Description
VILLAGE 2 SO 51471		Pin in concrete pillar

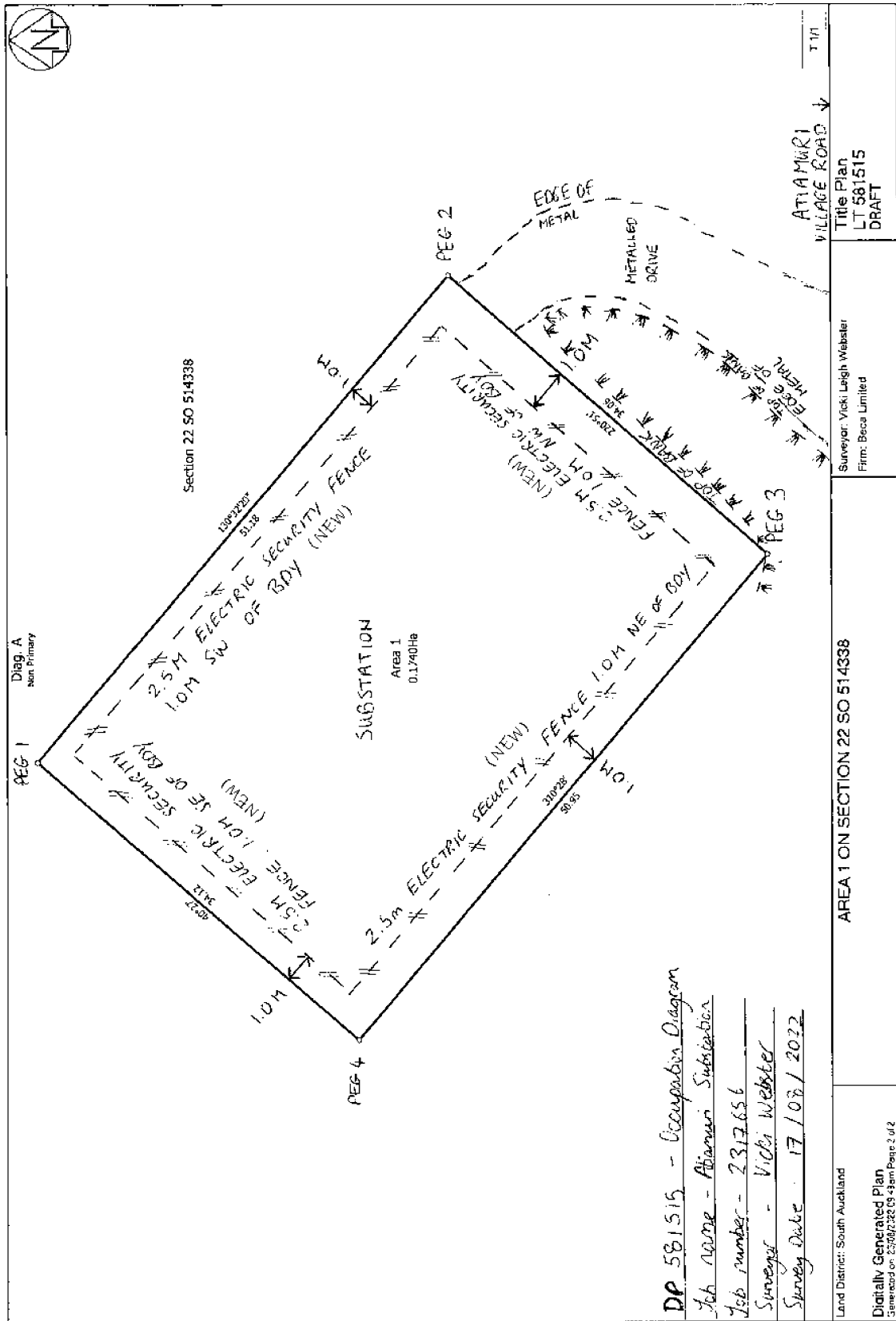
*** End of Report ***

DP 581515 Schedule of Easements

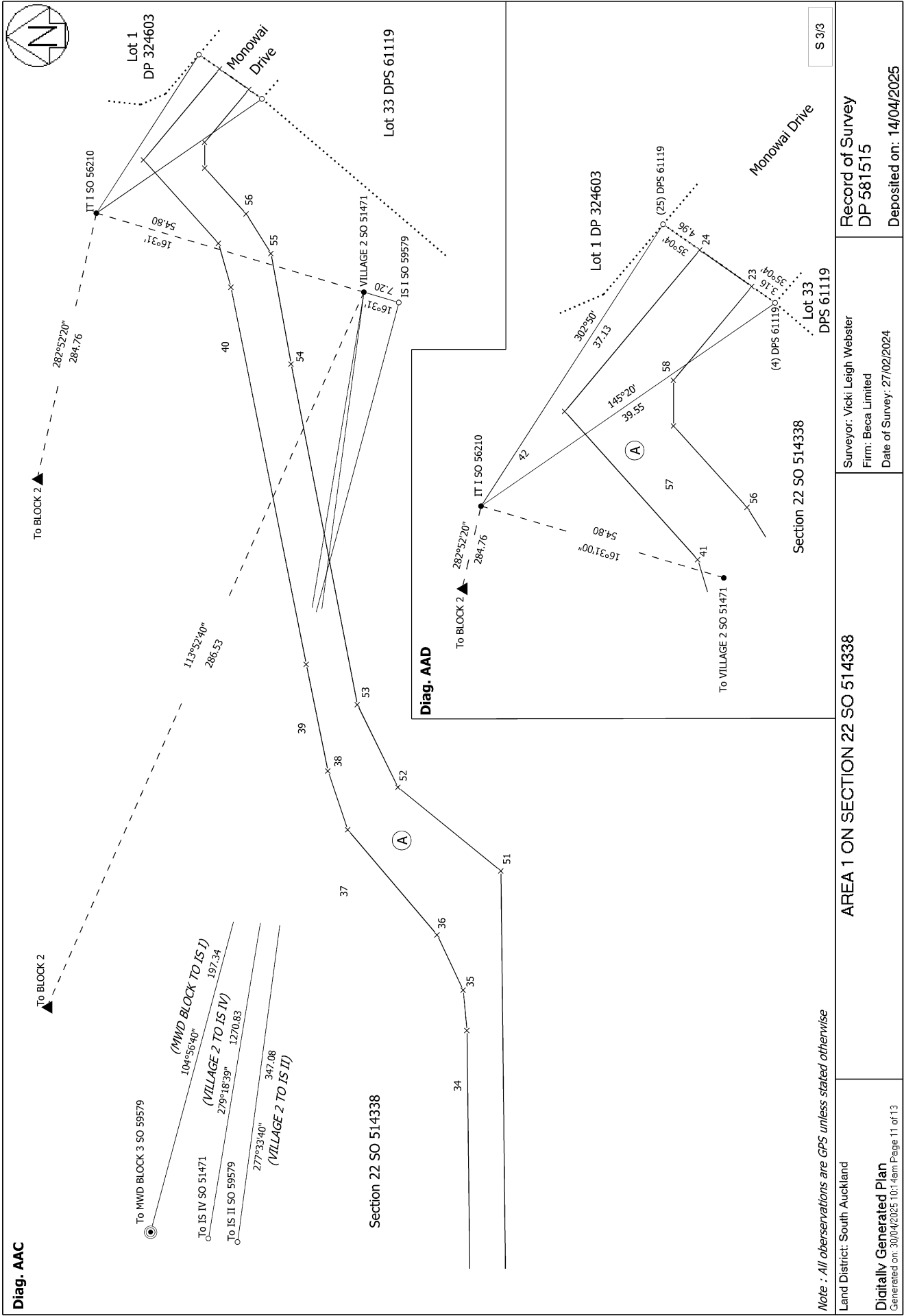
Memorandum of Easements (Pursuant to s243 Resource Management Act 1991)			
Purpose	Shown	Burdened Land (Servient Tenement)	Benefited Land (Dominant Tenement)
Right of Way	A	Section 22 SO 514338	Area 1

Schedule of Easements			
Purpose	Shown	Burdened Land (Servient Tenement)	Benefited Land (Dominant Tenement)
Right to Convey Electricity And Telecommunications	B & C	Section 22 SO 514338	Area 1

Occupation Diagram



DP 581515 - Occupation Diagram
 Job name - Atiamuri Substation
 Job number - 2317656
 Surveyor - Vicki Webster
 Survey Date - 17/08/2022



Diag. AAC

To BLOCK 2

To MWID BLOCK 3 SO 59579

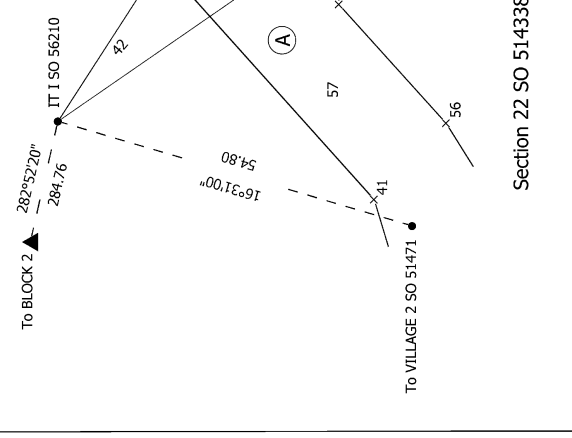
To IS IV SO 51471
(MWID BLOCK TO IS I)
 104°56'40" 197.34

To IS II SO 59579
(VILLAGE 2 TO IS IV)
 279°18'39" 1270.83

(VILLAGE 2 TO IS II)
 277°33'40" 347.08

Section 22 SO 514338

Diag. AAD



S 3/3

Note : All observations are GPS unless stated otherwise

Land District: South Auckland

AREA 1 ON SECTION 22 SO 514338

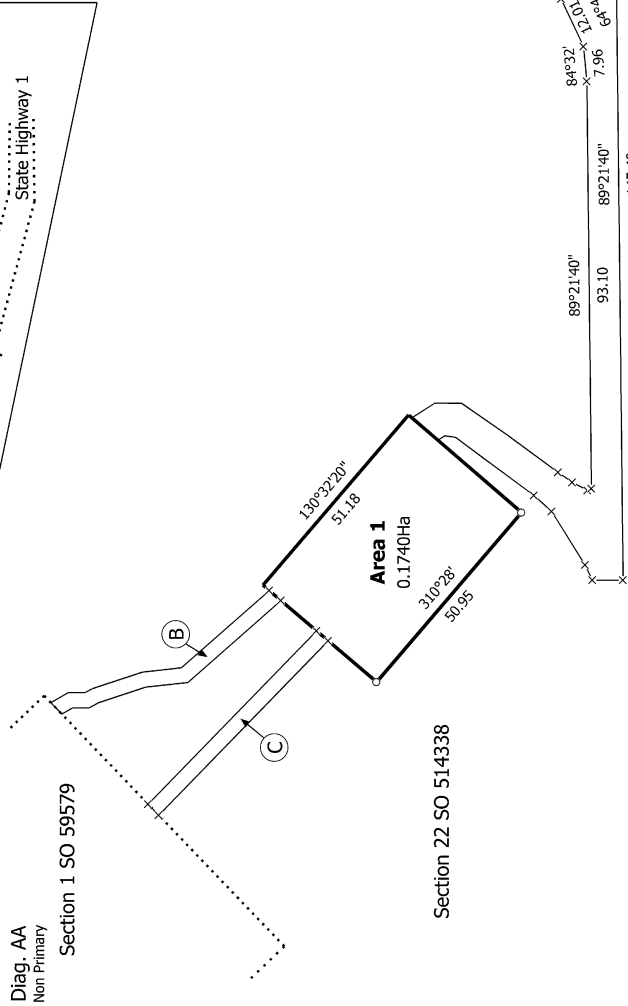
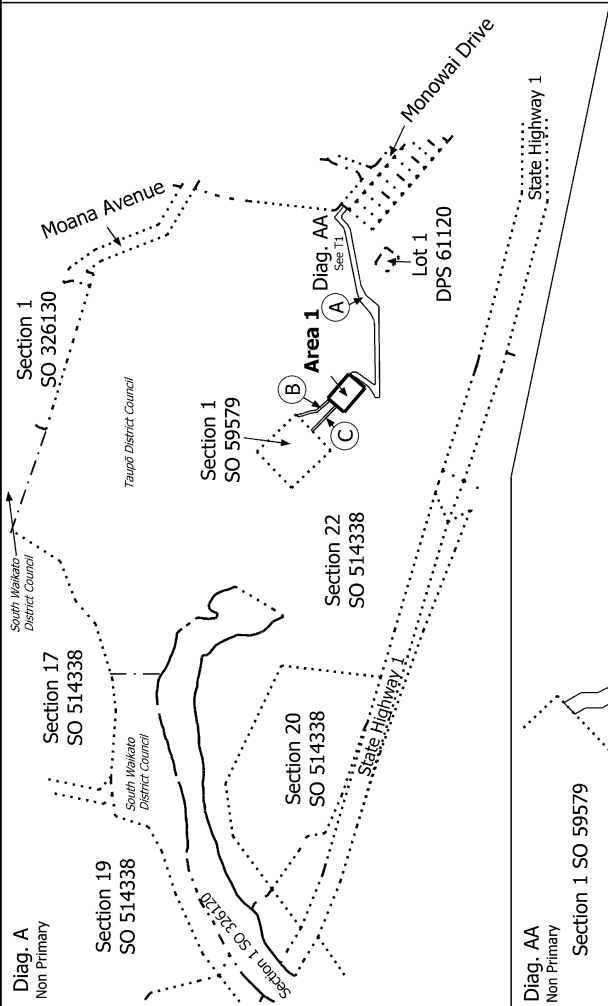
Surveyor: Vicki Leigh Webster
 Firm: Beca Limited

Record of Survey
 DP 581515

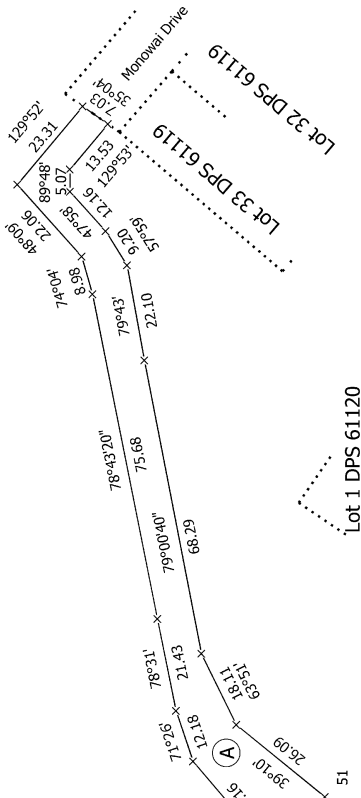
Digitally Generated Plan
 Generated on: 30/04/2025 10:14am Page 11 of 13

Date of Survey: 27/02/2024

Deposited on: 14/04/2025



Lot 1 DP 324603



T 1/2

<p>Land District: South Auckland</p> <p>Digitally Generated Plan Generated on: 30/04/2025 10:14am Page 12 of 13</p>	<p>AREA 1 ON SECTION 22 SO 514338</p>	<p>Surveyor: Vicki Leigh Webster Firm: Beca Limited Date of Survey: 27/02/2024</p>	<p>Record of Survey DP 581515 Deposited on: 14/04/2025</p>
--	--	--	--

