

Record of Survey - DP 592271

Survey Number	DP 592271
Surveyor Reference	J002011 1731 Waingake Road
Surveyor	Patrick Brian Pierard
Survey Firm	Civil Project Solutions Ltd
Surveyor Declaration	I Patrick Brian Pierard, being a licensed cadastral surveyor, certify that-- (a) this dataset provided by me and its related survey are accurate, correct and in accordance with the Cadastral Survey Act 2002 and Cadastral Survey Rules 2021; and (b) the survey was undertaken by me or under my personal direction. Declared on 25 Nov 2023 11:12 AM

Survey Details

Dataset Description	Lots 1 & 2 being a subdivision of Lot 1 DP 403979		
Purpose	LT Subdivision		
Status	Deposited	Type	Survey
Land District	Gisborne	Survey Class	Class B
Meridional Circuit	Poverty Bay 2000	Vertical Datum	None

Survey Dates

Surveyed Date	30/05/2023	Certified Date	25/11/2023
Submitted Date	25/11/2023 11:12:10	Survey Approval Date	01/12/2023
Deposit Date	07/03/2024		

Referenced Surveys

Survey Number	Land District	Bearing Correction
DP 8558	Gisborne	0°00'00"
DP 6720	Gisborne	-0°00'20"
SO 5158	Gisborne	-0°00'20"
DP 403979	Gisborne	0°00'00"
DP 1419	Gisborne	0°00'50"

Territorial Authorities

Gisborne District

Comprised In

RT 413494

Created Parcels

Parcels	Parcel Intent	Area	RT Reference
Lot 1 Deposited Plan 592271	Fee Simple Title	6.1975 Ha	1139949
Lot 2 Deposited Plan 592271	Fee Simple Title	1.0750 Ha	1139950
Area A Deposited Plan 592271	Easement		
Esplanade Strip B Deposited Plan 592271	Esplanade Strip		
Total Area		<u>7.2725 Ha</u>	

Mark and Vector

Survey Number DP 592271

Meridional Circuit Poverty Bay 2000

From	To	Code	Bearing	Adpt Surv	Bearing Correction	Distance	Adpt Surv	Class
IT LXII DP 8558	IT X SO 5158	ob1	207°46'50"	M		432.16 M		
IT X SO 5158	IS XI SO 5158	ob3	184°36'10"	M		64.05 M		
IS XI SO 5158	IS III DP 6720	ob6	87°08'00"	M		42.68 M		
IS III DP 6720	IT 4 DP 403979	ob8	121°52'50"	M		120.56 M		
IT 4 DP 403979	IT LXII DP 8558	ob12	6°54'46"	M		511.45 M		
IS III DP 6720	IT 5 DP 403979	ob9	61°52'40"	M		228.71 M		
IT 5 DP 403979	IT LXII DP 8558	ob17	353°35'20"	M		338.36 M		
IT 4 DP 403979	IT 5 DP 403979	ob13	30°05'35"	M		198.17 M		
IT 5 DP 403979	IT 6 DP 403979	ob18	71°55'00"	A DP 403979	0°00'00"	220.75 A DP 403979		
IT 6 DP 403979	IT 7 DP 403979	ob19	320°55'10"	A DP 403979	0°00'00"	145.89 A DP 403979		
IT 7 DP 403979	IT 8 DP 403979	ob20	280°22'40"	A DP 403979	0°00'00"	119.47 A DP 403979		
IT 8 DP 403979	IT 9 DP 403979	ob21	262°55'40"	A DP 403979	0°00'00"	179.88 A DP 403979		
IT 9 DP 403979	IT 2 DP 403979	ob22	203°23'40"	A DP 403979	0°00'00"	197.17 A DP 403979		
IT 2 DP 403979	IS III DP 6720	ob23	153°06'10"	A DP 403979	0°00'00"	121.06 A DP 403979		
IT X SO 5158	PEG XB SO 5158	ob4	1°58'40"	M		8.11 M		
PEG XB SO 5158	PEG 1 DP 592271	ob25	181°06'40"	C		21.72 C		Class B
UNMK 2 LT 592271	PEG XIA SO 5158	ob74	181°06'40"	C		18.24 C		Class B
PEG XIA SO 5158	IS XI SO 5158	ob26	272°51'40"	M		4.02 M		
IT 4 DP 403979	DISK 17 DP 403979	ob14	50°20'00"	M		30.23 M		
DISK 17 DP 403979	DISK 3 DP 592271	ob29	22°58'30"	C		39.85 C		Class B
DISK 3 DP 592271	DISK 18 DP 403979	ob33	22°58'30"	C		26.89 M		Class B
DISK 18 DP 403979	IT 5 DP 403979	ob31	28°52'40"	M		103.60 M		
IT LXII DP 8558	IS II SO 5158	ob2	187°24'00"	A DP 8558	0°00'00"	18.92 A DP 8558		
IS II SO 5158	PEG III SO 5158	ob34	230°59'40"	A SO 5158	-0°00'20"	31.84 A SO 5158		
PEG III SO 5158	PEG IV SO 5158	ob35	230°59'40"	A SO 5158	-0°00'20"	26.84 A SO 5158		
PEG IV SO 5158	IS V SO 5158	ob36	225°44'40"	A SO 5158	-0°00'20"	82.14 A SO 5158		
IS V SO 5158	IT VI SO 5158	ob37	212°49'40"	A SO 5158	-0°00'20"	37.32 A SO 5158		
IT VI SO 5158	IT IX SO 5158	ob38	216°04'30"	A SO 5158	-0°00'20"	144.60 A SO 5158		
IT IX SO 5158	IT X SO 5158	ob39	174°53'10"	A SO 5158	-0°00'20"	121.61 A SO 5158		
UNMK 1 DP 403979	UNMK 1 SO 5158	ob81	354°53'10"	A SO 5158	-0°00'20"	10.12 A SO 5158		Class BD
UNMK 1 SO 5158	UNMK 2 SO 5158	ob40	354°53'10"	A SO 5158	-0°00'20"	23.66 A SO 5158		
UNMK 2 SO 5158	PEG IXA SO 5158	ob41	354°53'10"	A SO 5158	-0°00'20"	16.09 A SO 5158		
PEG IXA SO 5158	IT IX SO 5158	ob42	285°28'40"	A SO 5158	-0°00'20"	1.08 A SO 5158		

Mark and Vector

Survey Number DP 592271

Meridional Circuit Poverty Bay 2000

From	To	Code	Bearing	Adpt Surv	Bearing Correction	Distance	Adpt Surv	Class
DISK 18 DP 403979	DISK 19 DP 403979	ob32	42°23'00"	A DP 403979	0°00'00"	23.13 A	DP 403979	Class B
DISK 19 DP 403979	DISK 20 DP 403979	ob43	41°38'30"	A DP 403979	0°00'00"	59.35 A	DP 403979	Class B
DISK 20 DP 403979	DISK 21 DP 403979	ob44	53°31'00"	A DP 403979	0°00'00"	12.67 A	DP 403979	Class B
DISK 21 DP 403979	DISK 22 DP 403979	ob45	29°49'00"	A DP 403979	0°00'00"	22.88 A	DP 403979	Class B
DISK 22 DP 403979	DISK 23 DP 403979	ob46	58°45'00"	A DP 403979	0°00'00"	15.60 A	DP 403979	Class B
DISK 23 DP 403979	DISK 24 DP 403979	ob47	82°28'00"	A DP 403979	0°00'00"	42.21 A	DP 403979	Class B
DISK 24 DP 403979	UNMK 2 DP 403979	ob48	65°26'20"	A DP 403979	0°00'00"	79.28 A	DP 403979	Class BD
DISK 25 DP 403979	IT 6 DP 403979	ob49	67°07'30"	A DP 403979	0°00'00"	54.22 A	DP 403979	
UNMK 4 LT 592271	DISK 2 DP 592271	ob77	106°05'10"	C		22.46 C		Class B
DISK 2 DP 592271	DISK 3 DP 592271	ob51	114°30'00"	C		27.68 C		Class B
IS III DP 6720	PEG 1 DP 592271	ob10	321°58'00"	M		61.07 M		
IS III DP 6720	DISK 2 DP 592271	ob11	88°07'30"	M		116.05 M		
IT 4 DP 403979	DISK 2 DP 592271	ob15	11°25'00"	M		68.83 M		
IT 4 DP 403979	DISK 3 DP 592271	ob16	34°44'00"	M		68.13 M		
DISK 25 DP 403979	UNMK 26 DP 403979	ob50	65°26'20"	A DP 403979	0°00'00"	5.20 A	DP 403979	Class BD
IT LXII DP 8558	IS III DP 6720	ob0	200°15'45"	M		473.35 M		
IS XI SO 5158	IS XII SO 5158	ob5	184°36'10"	A SO 5158	-0°00'20"	46.39 A	SO 5158	
IT XIII SO 5158	POST 5 DP 6720	ob69	35°42'40"	A DP 6720	-0°00'20"	20.35 A	DP 6720	
IT 1 DP 403979	POST 5 DP 6720	ob70	275°15'00"	A DP 403979	0°00'00"	75.74 A	DP 403979	
IT 1 DP 403979	IT 4 DP 403979	ob71	87°08'30"	A DP 403979	0°00'00"	63.76 A	DP 403979	
IS III DP 6720	IT 1 DP 403979	ob7	149°56'10"	A DP 403979	0°00'00"	77.25 A	DP 403979	
PEG 1 DP 592271	UNMK 1 LT 592271	ob27	181°06'40"	C		29.19 C		Class B
UNMK 1 LT 592271	UNMK 2 LT 592271	ob72	181°06'40"	C		3.03 C		Class B
PEG 1 DP 592271	UNMK 3 LT 592271	ob28	106°05'10"	C		134.39 C		Class B
UNMK 3 LT 592271	UNMK 4 LT 592271	ob76	106°05'10"	C		3.03 C		Class B
UNMK 1 LT 592271	UNMK 5 LT 592271	ob73	99°26'00"	C		129.52 C		Class B

Mark and Vector

Survey Number DP 592271

Meridional Circuit Poverty Bay 2000

From	To	Code	Bearing	Adpt Surv	Bearing Correction	Distance	Adpt Surv	Class
UNMK 5 LT 592271	UNMK 3 LT 592271	ob78	8°22'00"	C		13.30 C		Class B
UNMK 2 LT 592271	UNMK 6 LT 592271	ob75	99°26'00"	C		132.14 C		Class B
UNMK 6 LT 592271	UNMK 4 LT 592271	ob79	8°22'00"	C		15.96 C		Class B
DISK 17 DP 403979	DISK 16 DP 403979	ob30	244°24'00"	A DP 403979	0°00'00"	10.64 A DP 403979		Class B
DISK 16 DP 403979	DISK 15 DP 403979	ob53	275°57'00"	A DP 403979	0°00'00"	21.07 A DP 403979		Class B
DISK 15 DP 403979	POST 14 DP 403979	ob52	229°19'00"	A DP 403979	0°00'00"	5.99 A DP 403979		Class B
POST 14 DP 403979	POST 13 DP 403979	ob54	251°01'00"	A DP 403979	0°00'00"	2.09 A DP 403979		Class B
POST 13 DP 403979	POST 12 DP 403979	ob55	296°42'00"	A DP 403979	0°00'00"	2.07 A DP 403979		Class B
POST 12 DP 403979	DISK 11 DP 403979	ob56	305°53'00"	A DP 403979	0°00'00"	9.67 A DP 403979		Class B
DISK 11 DP 403979	DISK 10 DP 403979	ob57	275°26'00"	A DP 403979	0°00'00"	32.06 A DP 403979		Class B
DISK 10 DP 403979	PEG 9 DP 403979	ob58	301°43'00"	A DP 403979	0°00'00"	4.00 A DP 403979		Class B
PEG 9 DP 403979	PEG 8 DP 403979	ob59	276°52'00"	A DP 403979	0°00'00"	6.13 A DP 403979		Class B
PEG 8 DP 403979	DISK 7 DP 403979	ob60	249°27'00"	A DP 403979	0°00'00"	3.28 A DP 403979		Class B
DISK 7 DP 403979	DISK 6 DP 403979	ob61	277°21'00"	A DP 403979	0°00'00"	24.31 A DP 403979		Class B
DISK 6 DP 403979	POST 1 DP 6720	ob62	358°46'00"	A DP 403979	0°00'00"	31.84 A DP 403979		Class B
POST 1 DP 6720	POST 2 DP 6720	ob63	273°25'40"	A DP 6720	-0°00'20"	19.35 A DP 6720		Class B
POST 2 DP 6720	POST 3 DP 6720	ob64	178°59'40"	A DP 6720	-0°00'20"	19.10 A DP 6720		Class B
POST 3 DP 6720	POST 4 DP 6720	ob65	248°01'40"	A DP 6720	-0°00'20"	8.59 A DP 6720		Class B
POST 4 DP 6720	POST 5 DP 6720	ob66	209°56'40"	A DP 6720	-0°00'20"	38.82 A DP 6720		Class B
POST 5 DP 6720	PEG XIA SO 5158	ob67	335°39'40"	A DP 6720	-0°00'20"	13.44 A DP 6720		Class B
PEG XIA SO 5158	PEG XIA SO 5158	ob68	4°36'10"	A SO 5158	-0°00'20"	45.48 A SO 5158		Class B
IS XII SO 5158	IT XIII SO 5158	ob80	184°36'10"	A SO 5158	-0°00'20"	28.16 A SO 5158		
PEG XB SO 5158	UNMK 1 DP 403979	ob24	354°53'10"	A SO 5158	-0°00'20"	63.31 A SO 5158		Class BD
UNMK 2 DP 403979	DISK 25 DP 403979	ob82	65°26'20"	A DP 403979	0°00'00"	6.64 A DP 403979		Class BD

Mark Name	Mark Condition	Description
DISK 10 DP 403979		Bdy disk in post
DISK 11 DP 403979		Bdy disk in post

Mark and Vector

Survey Number DP 592271
Meridional Circuit Poverty Bay 2000

Mark Name	Mark Condition	Description
DISK 15 DP 403979		Bdy disk in post
DISK 16 DP 403979		Bdy disk in post
DISK 6 DP 403979		Bdy disk in post
DISK 7 DP 403979		Bdy disk in post
IS III DP 6720		Iron Spike buried 0.10m deep in grass paddock
IT 4 DP 403979		Iron Tube buried 0.15m deep in grass paddock
IT LXII DP 8558		IT buried in grass berm behind agapanthus

***** End of Report *****

Schedule / Memorandum

Land Registration District

Gisborne

Survey Number

LT 592271

Territorial Authority (the Council)

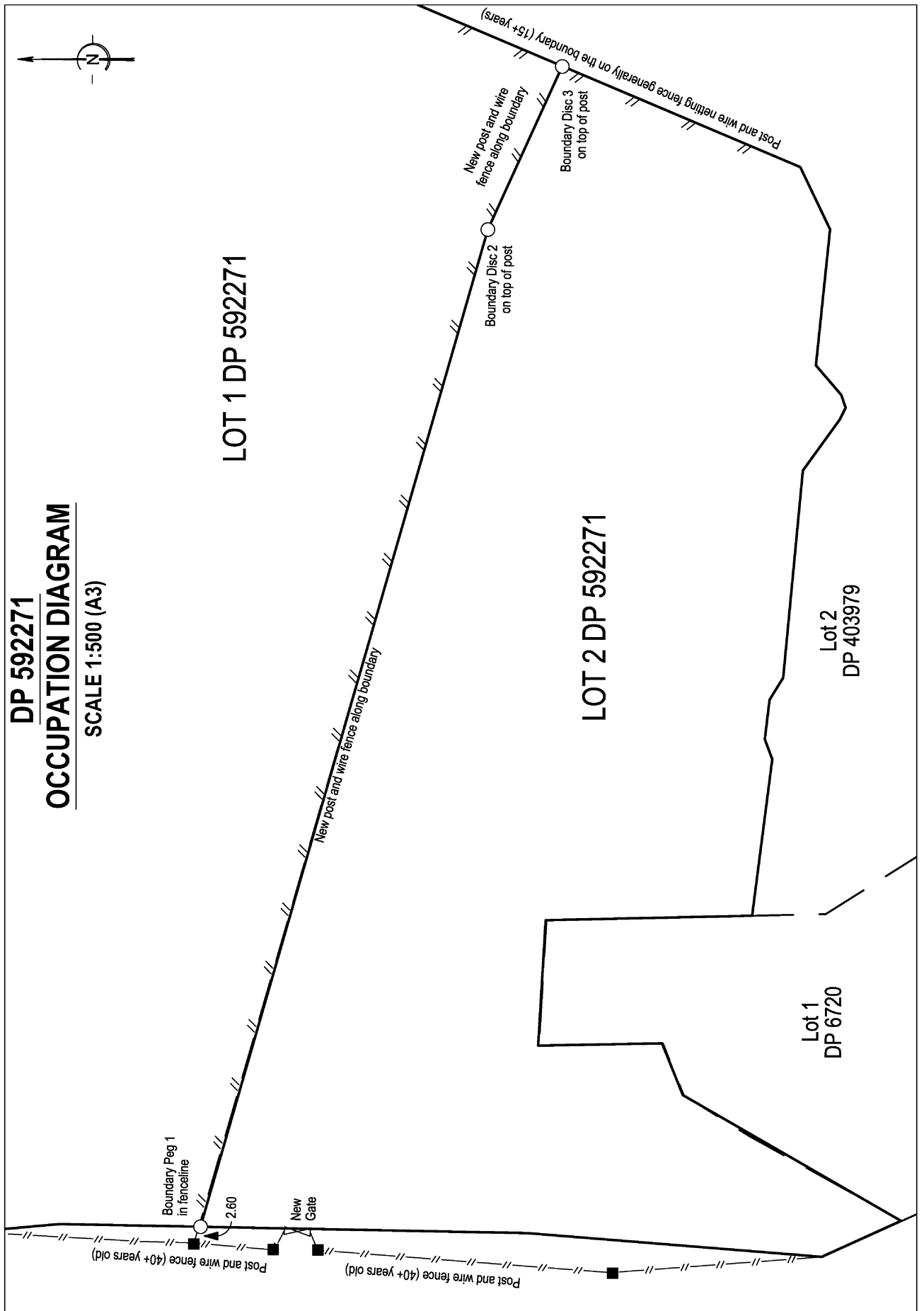
Gisborne District

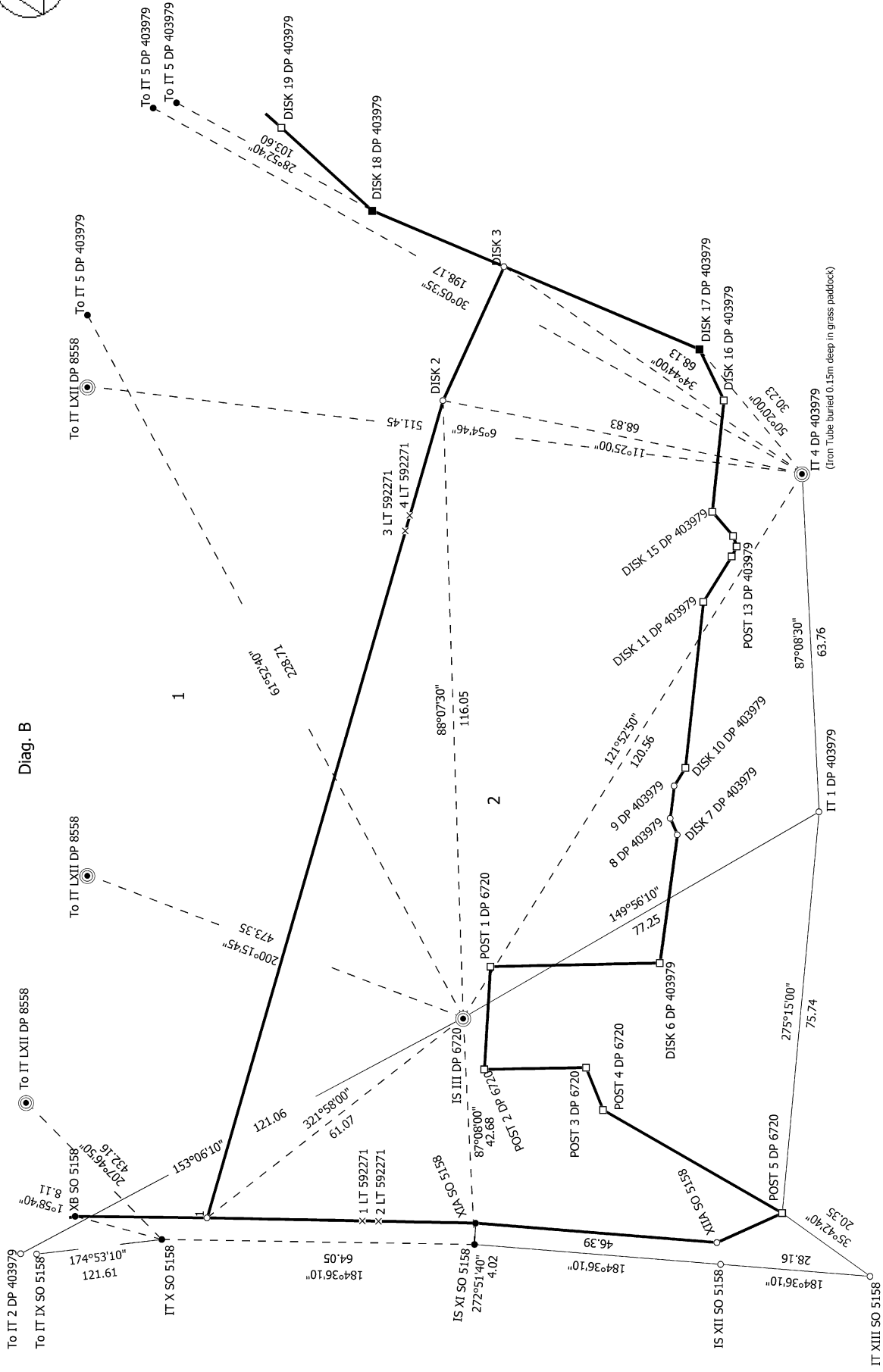
Memorandum of Easements

Last Edited: 15 Jun 2023 10:05:53

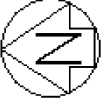
<u>Purpose</u>	<u>Shown</u>	<u>Burdened Land</u> (<u>Servient Tenement</u>)	<u>Benefited Land</u> (<u>Dominant Tenement</u>)
Right to convey electricity	A	Lot 2	Lot 1

Occupation Diagram

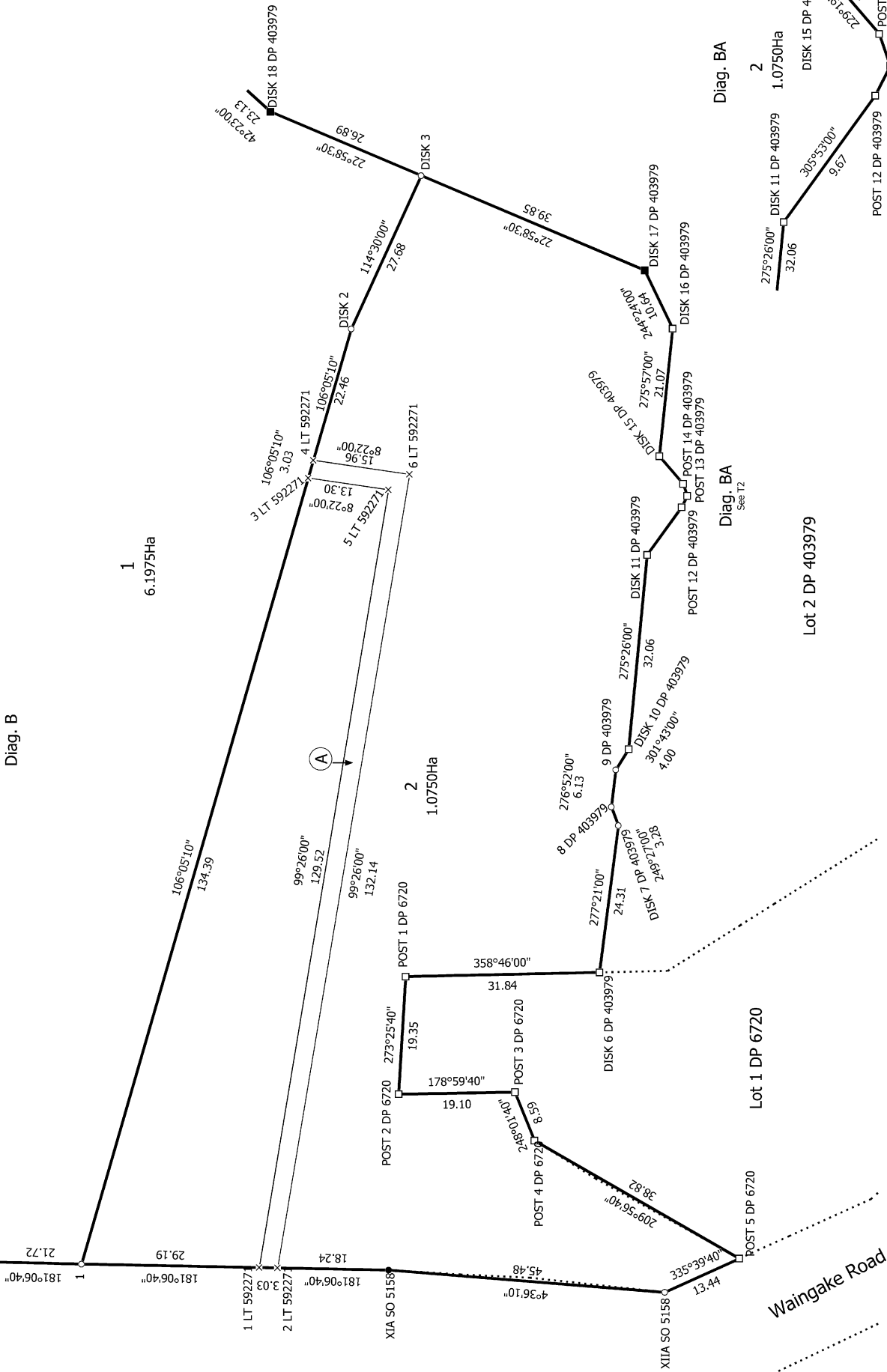




Diag. B



Diag. B



1
6.1975Ha

2
1.0750Ha

Diag. BA

Diag. BA
See T2

Lot 2 DP 403979

Lot 1 DP 6720

Waingake Road

T 2/2

Land District: Gisborne

Digitally Generated Plan
Generated on: 19/03/2024 10:33am | Page 12 of 12

Lots 1 & 2 being a subdivision of Lot 1 DP 403979

Surveyor: Patrick Brian Pierard
Firm: Civil Project Solutions Ltd
Date of Survey: 30/05/2023

**Record of Survey
DP 592271**

Deposited on: 7/03/2024