



Record of Survey - DP 594659

Survey Number DP 594659
Surveyor Reference 4313 - Drinnan Bdy Adj 3
Surveyor Graeme David Smith
Survey Firm Warkworth Surveyors Limited
Surveyor Declaration I Graeme David Smith, being a licensed cadastral surveyor, certify that--
(a) this dataset provided by me and its related survey are accurate, correct and in accordance with the Cadastral Survey Act 2002 and Cadastral Survey Rules 2021; and
(b) the survey was undertaken by me or under my personal direction.
Declared on 21 Nov 2023 05:22 PM

Survey Details

Dataset Description Lots 12 & 13 being a Subdivision of Lot 7 DP 196179 and Lots 14 & 15 being a subdivision of Lots 6 & 8 DP 86065.

Purpose LT Subdivision

Status Deposited **Type** Survey

Land District North Auckland **Survey Class** Class B

Meridional Circuit Mount Eden 2000 **Vertical Datum** None

Survey Dates

Surveyed Date 08/08/2023 **Certified Date** 21/11/2023
Submitted Date 21/11/2023 17:22:59 **Survey Approval Date** 23/11/2023
Deposit Date 07/11/2023

Referenced Surveys

Survey Number	Land District	Bearing Correction
DP 128192	North Auckland	0°00'00"
DP 555261	North Auckland	0°00'00"
DP 157236	North Auckland	0°00'00"
DP 21835	North Auckland	0°00'00"
DP 127725	North Auckland	0°01'00"
DP 86065	North Auckland	0°00'00"
DP 196179	North Auckland	0°00'00"
DP 539432	North Auckland	0°00'00"
DP 35012	North Auckland	0°00'00"

Territorial Authorities

Auckland Council

Comprised In

RT 966908
RT NA136B/15
RT NA43D/656
RT NA43D/659



Record of Survey - DP 594659

Created Parcels

Parcels	Parcel Intent	Area	RT Reference
Lot 12 Deposited Plan 594659	Fee Simple Title	0.4636 Ha	1146510
Lot 13 Deposited Plan 594659	Fee Simple Title	59.2177 Ha	1146511
Lot 14 Deposited Plan 594659	Fee Simple Title	7.4660 Ha	1146512
Area A Deposited Plan 594659	Covenant - Land		
Area B Deposited Plan 594659	Covenant - Land		
Lot 15 Deposited Plan 594659	Fee Simple Title	21.5823 Ha	1146513
Total Area		<u>88.7296 Ha</u>	

Mark and Vector

Survey Number DP 594659

Meridional Circuit Mount Eden 2000

From	To	Code	Bearing	Adpt Surv	Bearing Correction	Distance	Adpt Surv	Class
IT IV DP 157236	IT I DP 594659	ob0	326°48'04" M			742.40 M		
IT I DP 594659	IT II DP 127725	ob8	114°25'00" M			125.79 M		
IT II DP 127725	IT IV DP 157236	ob27	152°50'50" M			639.74 M		
IT I DP 594659	IT XVII DP 86065	ob9	13°58'00" M			877.42 M		
IT XVII DP 86065	IT XXI DP 35012	ob31	185°34'40" M			1,068.32 M		
IT XXI DP 35012	IT I DP 594659	ob43	332°59'40" M			237.68 M		
IT XVII DP 86065	IT I DP 86065	ob32	47°52'00" M			310.53 M		
IT I DP 86065	IT I DP 594659	ob46	202°38'29" M			1,148.31 M		
IT XVII DP 86065	IT VI DP 86065	ob33	356°23'15" M			357.44 M		
IT VI DP 86065	IT I DP 594659	ob47	188°54'08" M			1,222.93 M		
IT XVII DP 86065	IT IIIC DP 86065	ob34	324°06'40" M			455.84 M		
IT IIIC DP 86065	IT I DP 594659	ob52	177°23'58" M			1,222.02 M		
IT I DP 594659	IS I DP 127725	ob10	153°01'20" M			117.38 M		
IS I DP 127725	IT IV DP 157236	ob55	145°38'10" M			625.85 M		
IT IIIC DP 86065	PEG (3) DP 86065	ob53	20°25'00" A	DP 86065	0°00'00"	14.60 A	DP 86065	
IT XVII DP 86065	PEG (3) DP 86065	ob35	325°36'40" M			464.07 M		
IT I DP 594659	PEG (3) DP 86065	ob11	357°39'52" M			1,235.47 M		
IT VI DP 86065	PEG 6 DP 539432	ob48	212°10'00" A	DP 539432	0°00'00"	2.22 A	DP 539432	
IT XVII DP 86065	PEG 6 DP 539432	ob36	356°10'40" M			355.67 M		
IT I DP 594659	PEG 6 DP 539432	ob12	8°51'40" M			1,220.91 M		
IT VI DP 86065	IT IIIC DP 86065	ob49	272°56'20" A	DP 539432	0°00'00"	245.04 A	DP 539432	
IT VI DP 86065	IT I DP 86065	ob50	120°24'30" A	DP 86065	0°00'00"	293.13 A	DP 86065	
IT II DP 127725	IS I DP 127725	ob28	229°21'00" M			80.82 M		
IT XXI DP 35012	IS LXXXVII DP 35012	ob44	46°08'00" A	DP 127725	0°01'00"	46.28 A	DP 127725	
IS LXXXVII DP 35012	IT I DP 98699	ob60	44°45'30" A	DP 127725	0°01'00"	68.22 A	DP 127725	
IT I DP 98699	IT II DP 127725	ob61	316°40'00" A	DP 127725	0°01'00"	108.96 A	DP 127725	
IS I DP 127725	PEG (1) DP 127725	ob56	4°04'00" A	DP 127725	0°01'00"	7.61 A	DP 127725	
IT II DP 127725	PEG (2) DP 127725	ob29	248°59'00" A	DP 127725	0°01'00"	5.25 A	DP 127725	
IT II DP 127725	POST (3) DP 127725	ob30	231°10'00" A	DP 127725	0°01'00"	45.68 A	DP 127725	

Mark and Vector

Survey Number DP 594659

Meridional Circuit Mount Eden 2000

From	To	Code	Bearing	Adpt Surv	Bearing Correction	Distance	Adpt Surv	Class
IT XXI DP 35012	IS II DP 196179	ob45	309°25'00"	A DP 196179	0°00'00"	285.99 A	DP 196179	
IS II DP 196179	IT XXXX DP 156602	ob64	338°35'30"	A DP 196179	0°00'00"	264.54 A	DP 196179	
IT XXXX DP 156602	PEG (35) DP 196179	ob66	38°02'00"	A DP 196179	0°00'00"	43.62 A	DP 196179	
PEG (35) DP 196179	PEG 106 DP 594659	ob67	145°46'50"	A DP 196179	0°00'00"	322.95 C		Class B
PEG 106 DP 594659	PEG (1) DP 127725	ob188	145°46'50"	A DP 196179	0°00'00"	97.37 C		Class B
IT 1 DP 594659	PEG (35) DP 196179	ob13	323°54'05"	M		310.07 M		
IT IV DP 157236	PEG (35) DP 196179	ob1	325°56'50"	M		1,052.16 M		
IT 1 DP 594659	PEG 100 DP 594659	ob14	78°40'30"	M		26.44 M		
PEG 100 DP 594659	IT XVII DP 86065	ob68	12°23'09"	M		866.43 M		
IT 1 DP 594659	PEG 101 DP 594659	ob15	81°14'00"	M		33.14 M		
PEG 101 DP 594659	IT XVII DP 86065	ob70	11°56'34"	M		865.14 M		
IT 1 DP 594659	PEG 102 DP 594659	ob16	79°00'30"	M		36.15 M		
PEG 102 DP 594659	IT XVII DP 86065	ob73	11°47'22"	M		862.78 M		
IT 1 DP 594659	PEG 103 DP 594659	ob17	104°07'30"	M		45.54 M		
PEG 103 DP 594659	IT XVII DP 86065	ob75	10°59'46"	M		878.70 M		
IT 1 DP 594659	POST 104 DP 594659	ob18	132°03'40"	M		65.03 M		
POST 104 DP 594659	IT XVII DP 86065	ob77	10°21'06"	M		909.85 M		
IT XVII DP 86065	PEG 108 DP 594659	ob37	348°52'25"	M		210.05 M		
PEG 108 DP 594659	IT 1 DP 594659	ob79	189°11'50"	M		1,071.35 M		
IT XVII DP 86065	PEG 109 DP 594659	ob38	318°54'55"	M		313.46 M		
PEG 109 DP 594659	IT 1 DP 594659	ob81	180°18'16"	M		1,087.74 M		
PEG 6 DP 539432	PEG 110 DP 594659	ob59	276°43'30"	A DP 539432	0°00'00"	168.13 C		Class B
PEG 110 DP 594659	PEG (3) DP 86065	ob89	276°43'30"	A DP 539432	0°00'00"	71.97 C		Class B
IT XVII DP 86065	IS XVIIA DP 86065	ob39	295°22'20"	M		45.19 M		

Mark and Vector

Survey Number DP 594659

Meridional Circuit Mount Eden 2000

From	To	Code	Bearing	Adpt Surv	Bearing Correction	Distance	Adpt Surv	Class
IS XVIIA DP 86065	IS IIIA DP 86065	ob84	295°22'20"	A DP 86065	0°00'00"	53.78 A	DP 86065	
IS IIIA DP 86065	IS IIIB DP 86065	ob86	331°27'20"	A DP 86065	0°00'00"	309.38 A	DP 86065	
IS IIIB DP 86065	IT IIIC DP 86065	ob87	331°27'20"	A DP 86065	0°00'00"	62.74 A	DP 86065	
IS XVIIA DP 86065	PEG (7) DP 86065	ob85	14°41'00"	A DP 86065	0°00'00"	10.41 A	DP 86065	
IT XVII DP 86065	PEG (7) DP 86065	ob40	307°37'40"	M		48.22 M		
IT 1 DP 594659	PEG (7) DP 86065	ob19	11°08'53"	M		897.89 M		
IS I DP 127725	POST (3) DP 127725	ob57	47°00'00"	A DP 127725	0°01'00"	35.18 A	DP 127725	
PEG (1) DP 127725	POST 105 DP 594659	ob62	56°56'00"	A DP 127725	0°01'00"	22.55 C		Class B
POST 105 DP 594659	POST (3) DP 127725	ob90	56°56'00"	A DP 127725	0°01'00"	7.51 C		Class B
POST (3) DP 127725	PEG 107 DP 594659	ob65	48°54'00"	A DP 127725	0°01'00"	24.39 C		Class B
PEG 107 DP 594659	UNMK 3 DP 594659	ob187	48°54'00"	A DP 127725	0°01'00"	3.03 C		Class BD
UNMK 3 DP 594659	PEG (2) DP 127725	ob174	48°54'00"	A DP 127725	0°01'00"	13.30 C		Class BD
PEG (2) DP 127725	PEG (14) DP 127725	ob63	128°52'00"	A DP 127725	0°01'00"	110.47 A	DP 127725	Class B
PEG (14) DP 127725	UNMK (14) DP 196179	ob95	44°05'00"	A DP 196179	0°00'00"	54.18 A	DP 196179	Class BD
IT 1 DP 594659	PEG (1) DP 127725	ob20	150°59'50"	M		110.95 M		
IT 1 DP 594659	POST 105 DP 594659	ob21	139°22'40"	M		111.61 M		
IT XVII DP 86065	POST 105 DP 594659	ob41	188°27'05"	M		946.49 M		
IT IV DP 157236	PEG (1) DP 127725	ob2	326°03'50"	M		631.79 M		
IT 1 DP 594659	PEG (2) DP 127725	ob22	116°10'10"	M		122.19 M		
IT IV DP 157236	PEG (2) DP 127725	ob3	332°22'50"	M		640.30 M		
IT 1 DP 594659	PEG 107 DP 594659	ob23	123°34'10"	M		116.84 M		
IT IV DP 157236	PEG 107 DP 594659	ob4	330°57'05"	M		636.70 M		
IT IV DP 157236	POST (3) DP 127725	ob5	328°47'30"	M		632.12 M		
IT 1 DP 594659	POST (3) DP 127725	ob24	135°35'10"	M		112.80 M		
IT 1 DP 594659	PEG 110 DP 594659	ob25	0°59'10"	M		1,226.21 M		

Mark and Vector

Survey Number DP 594659

Meridional Circuit Mount Eden 2000

From	To	Code	Bearing	Adpt Surv	Bearing Correction	Distance	Adpt Surv	Class
IT IV DP 157236	PEG 110 DP 594659	ob6	348°12'55"	M		1,887.02 M		
IT 1 DP 594659	PEG 106 DP 594659	ob26	183°24'00"	M		16.54 M		
IT IV DP 157236	PEG 106 DP 594659	ob7	326°01'35"	M		729.19 M		
UNMK (12) DP 196179	PEG (11) DP 196179	ob93	33°05'00"	A DP 196179	0°00'00"	3.56 A DP 196179		Class BD
PEG (11) DP 196179	PEG (10) DP 128192	ob96	33°05'00"	A DP 196179	0°00'00"	88.98 A DP 196179		Class B
PEG (10) DP 128192	PEG (25) DP 196179	ob97	49°00'00"	A DP 196179	0°00'00"	236.92 A DP 196179		Class B
PEG (25) DP 196179	PEG (1) DP 196179	ob99	49°00'00"	A DP 196179	0°00'00"	93.40 A DP 196179		Class B
PEG (1) DP 196179	PEG (1) DP 128192	ob100	49°41'00"	A DP 196179	0°00'00"	112.27 A DP 196179		Class B
PEG (1) DP 128192	PEG (26) DP 196179	ob101	319°41'00"	A DP 196179	0°00'00"	0.75 A DP 196179		Class B
PEG (26) DP 196179	PEG (27) DP 196179	ob102	49°01'00"	A DP 196179	0°00'00"	55.10 A DP 196179		Class B
PEG (27) DP 196179	PEG (24) DP 196179	ob103	48°48'30"	A DP 196179	0°00'00"	37.29 A DP 196179		Class B
PEG (24) DP 196179	PEG (23) DP 196179	ob104	292°34'30"	A DP 196179	0°00'00"	38.71 A DP 196179		Class B
PEG (23) DP 196179	PEG (22) DP 196179	ob105	319°24'00"	A DP 196179	0°00'00"	10.00 A DP 196179		Class B
PEG (22) DP 196179	PEG (21) DP 196179	ob106	334°06'00"	A DP 196179	0°00'00"	37.17 A DP 196179		Class B
PEG (21) DP 196179	PEG (20) DP 196179	ob107	234°35'00"	A DP 196179	0°00'00"	12.03 A DP 196179		Class B
PEG (20) DP 196179	PEG (19) DP 196179	ob108	276°58'00"	A DP 196179	0°00'00"	21.03 A DP 196179		Class B
PEG (19) DP 196179	PEG (18) DP 196179	ob109	316°55'00"	A DP 196179	0°00'00"	11.77 A DP 196179		Class B
PEG (18) DP 196179	PEG (17) DP 196179	ob110	15°09'00"	A DP 196179	0°00'00"	34.39 A DP 196179		Class B
PEG (17) DP 196179	PEG (16) DP 196179	ob111	324°11'00"	A DP 196179	0°00'00"	39.10 A DP 196179		Class B
PEG (16) DP 196179	PEG (15) DP 196179	ob112	346°01'00"	A DP 196179	0°00'00"	21.77 A DP 196179		Class B
PEG (15) DP 196179	PEG (14) DP 196179	ob113	21°03'00"	A DP 196179	0°00'00"	8.28 A DP 196179		Class B
PEG (14) DP 196179	PEG (13) DP 196179	ob114	349°34'00"	A DP 196179	0°00'00"	36.85 A DP 196179		Class B
PEG (13) DP 196179	PEG (12) DP 196179	ob115	355°37'00"	A DP 196179	0°00'00"	42.07 A DP 196179		Class B
PEG (12) DP 196179	PEG (11) DP 196179	ob116	252°51'00"	A DP 196179	0°00'00"	18.48 A DP 196179		Class B

Mark and Vector

Survey Number DP 594659

Meridional Circuit Mount Eden 2000

From	To	Code	Bearing	Adpt Surv	Bearing Correction	Distance	Adpt Surv	Class
PEG (11) DP 196179	PEG (10) DP 196179	ob117	346°37'00"	A DP 196179	0°00'00"	8.89 A	DP 196179	Class B
PEG (10) DP 196179	PEG (9) DP 196179	ob118	12°10'30"	A DP 196179	0°00'00"	39.82 A	DP 196179	Class B
PEG (9) DP 196179	PEG (8) DP 196179	ob119	343°13'30"	A DP 196179	0°00'00"	58.50 A	DP 196179	Class B
PEG (8) DP 196179	PEG (7) DP 196179	ob120	357°52'30"	A DP 196179	0°00'00"	28.79 A	DP 196179	Class B
PEG (7) DP 196179	PEG (6) DP 196179	ob121	342°28'30"	A DP 196179	0°00'00"	70.88 A	DP 196179	Class B
PEG (6) DP 196179	PEG (5) DP 196179	ob122	309°48'00"	A DP 196179	0°00'00"	40.36 A	DP 196179	Class B
PEG (5) DP 196179	PEG (4) DP 196179	ob123	309°03'00"	A DP 196179	0°00'00"	167.16 A	DP 196179	Class B
PEG (4) DP 196179	PEG (3) DP 196179	ob124	305°09'00"	A DP 196179	0°00'00"	8.75 A	DP 196179	Class B
PEG (3) DP 196179	PEG (2) DP 196179	ob125	309°42'00"	A DP 196179	0°00'00"	103.84 A	DP 196179	Class B
PEG (2) DP 196179	PEG (31) DP 86065	ob126	235°01'00"	A DP 196179	0°00'00"	10.85 A	DP 196179	Class B
PEG (31) DP 86065	PEG (30) DP 86065	ob127	203°53'00"	A DP 86065	0°00'00"	242.13 A	DP 86065	Class B
PEG (30) DP 86065	PEG (28) DP 86065	ob128	229°59'00"	A DP 86065	0°00'00"	106.70 A	DP 86065	Class B
PEG (28) DP 86065	PEG (29) DP 86065	ob129	219°33'30"	A DP 86065	0°00'00"	67.84 A	DP 86065	Class B
PEG (29) DP 86065	PEG (32) DP 86065	ob130	226°54'00"	A DP 86065	0°00'00"	74.97 A	DP 86065	Class B
PEG (32) DP 86065	PEG (34) DP 35012	ob131	234°38'00"	A DP 35012	0°00'00"	13.18 A	DP 35012	Class B
PEG (34) DP 35012	PEG (33) DP 35012	ob132	234°37'40"	A DP 35012	0°00'00"	255.74 A	DP 35012	Class B
PEG (33) DP 35012	PEG (35) DP 196179	ob133	209°42'40"	A DP 196179	0°00'00"	188.72 A	DP 196179	Class B
PEG (7) DP 86065	PEG (15) DP 86065	ob88	47°52'00"	A DP 86065	0°00'00"	42.89 A	DP 86065	Class B
PEG (15) DP 86065	PEG (4) DP 86065	ob91	116°35'00"	A DP 86065	0°00'00"	47.91 A	DP 86065	Class B
PEG (4) DP 86065	PEG (5) DP 86065	ob92	77°16'00"	A DP 86065	0°00'00"	14.85 A	DP 86065	Class B
PEG (5) DP 86065	PEG (6) DP 86065	ob134	48°10'00"	A DP 86065	0°00'00"	73.57 A	DP 86065	Class B
PEG (6) DP 86065	PEG (8) DP 86065	ob135	70°43'00"	A DP 86065	0°00'00"	47.35 A	DP 86065	Class B
PEG (8) DP 86065	PEG (1) DP 86065	ob136	55°00'00"	A DP 86065	0°00'00"	36.01 A	DP 86065	Class B
PEG (1) DP 86065	PEG (2) DP 86065	ob137	23°53'00"	A DP 86065	0°00'00"	55.65 A	DP 86065	Class B

Mark and Vector

Survey Number DP 594659

Meridional Circuit Mount Eden 2000

From	To	Code	Bearing	Adpt Surv	Bearing Correction	Distance	Adpt Surv	Class
PEG (2) DP 86065	PEG (9) DP 86065	ob138	330°38'00"	A DP 86065	0°00'00"	38.96 A	DP 86065	Class B
PEG (9) DP 86065	PEG (14) DP 86065	ob139	15°30'00"	A DP 86065	0°00'00"	20.23 A	DP 86065	Class B
PEG (14) DP 86065	PEG 6 DP 539432	ob140	300°28'30"	A DP 86065	0°00'00"	246.58 A	DP 86065	Class B
PEG (3) DP 86065	PEG (20) DP 21835	ob58	276°43'30"	A DP 539432	0°00'00"	165.68 A	DP 86065	Class B
PEG (20) DP 21835	IS XIV DP 21835	ob149	35°00'00"	A DP 21835	0°00'00"	2.51 A	DP 21835	
IS XIV DP 21835	IS XIII DP 21835	ob141	191°50'00"	A DP 21835	0°00'00"	75.56 A	DP 21835	
IS XIII DP 21835	IS XII DP 21835	ob142	127°24'00"	A DP 21835	0°00'00"	77.59 A	DP 21835	
IS XII DP 21835	IS IX DP 21835	ob143	204°48'00"	A DP 21835	0°00'00"	76.80 A	DP 21835	
IS IX DP 21835	IS VIII DP 21835	ob144	170°41'00"	A DP 21835	0°00'00"	137.06 A	DP 21835	
IS VIII DP 21835	IS VII DP 21835	ob145	228°12'00"	A DP 21835	0°00'00"	147.11 A	DP 21835	
IS VII DP 21835	IS VI DP 21835	ob146	121°45'00"	A DP 21835	0°00'00"	103.48 A	DP 21835	
IS VI DP 21835	IS V DP 21835	ob147	227°56'00"	A DP 21835	0°00'00"	115.43 A	DP 21835	
IS V DP 21835	IS IV DP 21835	ob148	135°30'00"	A DP 21835	0°00'00"	108.01 A	DP 21835	
IS IV DP 21835	IS III DP 21835	ob151	193°21'00"	A DP 21835	0°00'00"	126.19 A	DP 21835	
IS III DP 21835	IS II DP 21835	ob153	60°08'00"	A DP 21835	0°00'00"	60.75 A	DP 21835	
IS II DP 21835	IS I DP 21835	ob154	139°35'00"	A DP 21835	0°00'00"	90.12 A	DP 21835	
IS I DP 21835	IS (101) DP 21835	ob155	115°28'00"	A DP 21835	0°00'00"	46.47 A	DP 21835	
IS (101) DP 21835	IS XXVIII DP 21835	ob156	23°28'00"	A DP 21835	0°00'00"	54.05 A	DP 21835	
IS XXVIII DP 21835	IS XXIX DP 21835	ob158	9°35'00"	A DP 21835	0°00'00"	193.89 A	DP 21835	
IS XXIX DP 21835	IS XXX DP 21835	ob159	58°17'00"	A DP 21835	0°00'00"	74.59 A	DP 21835	
IS XXX DP 21835	IS XXXI DP 21835	ob160	74°20'00"	A DP 21835	0°00'00"	44.36 A	DP 21835	
IS XXXI DP 21835	IS XXXII DP 21835	ob161	5°32'30"	A DP 21835	0°00'00"	121.06 A	DP 21835	
IS XXXII DP 21835	IS XXXIII DP 21835	ob162	39°19'00"	A DP 21835	0°00'00"	49.25 A	DP 21835	
IS XXXIII DP 21835	IS IIIA DP 86065	ob163	72°50'00"	A DP 86065	0°00'00"	4.80 A	DP 86065	
PEG (20) DP 21835	UNMK (21) DP 21835	ob150	215°00'00"	A DP 21835	0°00'00"	4.02 A	DP 21835	Class BD
IS (101) DP 21835	PEG (3) DP 21835	ob157	248°50'00"	A DP 21835	0°00'00"	20.50 A	DP 21835	
PEG (3) DP 21835	UNMK (210) DP 21835	ob165	198°45'30"	A DP 21835	0°00'00"	5.03 A	DP 21835	Class BD
PEG (3) DP 21835	PEG (5) DP 21835	ob166	18°45'30"	A DP 21835	0°00'00"	65.42 A	DP 21835	Class B

Mark and Vector

Survey Number DP 594659

Meridional Circuit Mount Eden 2000

From	To	Code	Bearing	Adpt Surv	Bearing Correction	Distance	Adpt Surv	Class
PEG (5) DP 21835	PEG (8) DP 21835	ob167	9°35'00"	A DP 21835	0°00'00"	201.37	A DP 21835	Class B
PEG (8) DP 21835	PEG (7) DP 21835	ob168	58°17'00"	A DP 21835	0°00'00"	86.52	A DP 21835	Class B
PEG (7) DP 21835	PEG (6) DP 21835	ob169	74°20'00"	A DP 21835	0°00'00"	33.41	A DP 21835	Class B
PEG (6) DP 21835	PEG (4) DP 21835	ob170	5°32'30"	A DP 21835	0°00'00"	113.40	A DP 21835	Class B
PEG (4) DP 21835	PEG (2) DP 21835	ob171	39°19'00"	A DP 21835	0°00'00"	68.32	A DP 21835	Class B
PEG (2) DP 21835	PEG (1) DP 21835	ob172	123°07'00"	A DP 21835	0°00'00"	70.13	A DP 21835	Class B
PEG (1) DP 21835	PEG (7) DP 86065	ob173	47°52'00"	A DP 86065	0°00'00"	5.98	A DP 86065	Class B
PEG 100 DP 594659	PEG 101 DP 594659	ob69	91°11'00"	C		6.83	C	Class B
PEG 101 DP 594659	PEG 103 DP 594659	ob71	144°47'00"	C		19.79	C	Class B
PEG 103 DP 594659	POST 104 DP 594659	ob76	172°46'00"	C		32.71	C	Class B
POST 104 DP 594659	POST 105 DP 594659	ob78	149°21'00"	C		47.85	C	Class B
PEG 101 DP 594659	PEG 102 DP 594659	ob72	56°03'00"	C		3.30	C	Class B
PEG 102 DP 594659	UNMK 2 DP 594659	ob74	56°03'00"	C		0.91	C	Class BD
PEG 109 DP 594659	PEG 108 DP 594659	ob82	100°19'40"	C		168.19	C	Class B
PEG 108 DP 594659	PEG (7) DP 86065	ob80	179°14'20"	C		176.68	C	Class B
PEG (10) DP 128192	POST (10) DP 196179	ob98	331°28'40"	A DP 196179	0°00'00"	242.96	A DP 196179	Class B
POST (10) DP 196179	POST (6) DP 196179	ob176	330°53'00"	A DP 196179	0°00'00"	57.41	A DP 196179	Class B
POST (6) DP 196179	POST (9) DP 196179	ob177	11°41'00"	A DP 196179	0°00'00"	37.87	A DP 196179	Class B
POST (9) DP 196179	POST (11) DP 196179	ob178	21°27'00"	A DP 196179	0°00'00"	53.90	A DP 196179	Class B
POST (11) DP 196179	POST (2) DP 196179	ob179	23°21'00"	A DP 196179	0°00'00"	16.74	A DP 196179	Class B
POST (2) DP 196179	POST (5) DP 196179	ob180	92°58'00"	A DP 196179	0°00'00"	36.90	A DP 196179	Class B
POST (5) DP 196179	POST (4) DP 196179	ob181	121°01'00"	A DP 196179	0°00'00"	17.24	A DP 196179	Class B
POST (4) DP 196179	POST (1) DP 196179	ob182	143°20'00"	A DP 196179	0°00'00"	46.35	A DP 196179	Class B
POST (1) DP 196179	POST (3) DP 196179	ob183	111°22'00"	A DP 196179	0°00'00"	89.73	A DP 196179	Class B

Mark and Vector

Survey Number DP 594659

Meridional Circuit Mount Eden 2000

From	To	Code	Bearing	Adpt Surv	Bearing Correction	Distance	Adpt Surv	Class
POST (3) DP 196179	POST (8) DP 196179	ob184	115°50'00"	A DP 196179	0°00'00"	60.55 A	DP 196179	Class B
POST (8) DP 196179	POST (7) DP 196179	ob185	132°44'00"	A DP 196179	0°00'00"	71.86 A	DP 196179	Class B
POST (7) DP 196179	PEG (25) DP 196179	ob186	161°21'00"	A DP 196179	0°00'00"	58.07 A	DP 196179	Class B
PEG 109 DP 594659	PEG 110 DP 594659	ob83	6°19'40"	C		139.13 C		Class B
PEG 106 DP 594659	PEG 100 DP 594659	ob189	51°07'00"	C		34.57 C		Class B
UNMK (14) DP 196179	UNMK (12) DP 196179	ob94	91°09'00"	C		150.69 C		
UNMK 2 DP 594659	UNMK 3 DP 594659	ob175	137°51'00"	C		94.44 C		
UNMK (21) DP 21835	UNMK (211) DP 21835	ob164	181°07'30"	C		760.95 C		
IT XXI DP 35012	IT IV DP 157236	ob42	143°53'55"	A DP 555261	0°00'00"	506.73 A	DP 555261	
IS I DP 127725	IT XXI DP 35012	ob54	152°57'30"	A DP 196179	0°00'00"	120.29 A	DP 196179	
IS III DP 21835	UNMK (211) DP 21835	ob152	150°08'00"	A DP 555261	0°00'00"	12.07 A	DP 555261	
UNMK (211) DP 21835	UNMK (210) DP 21835	ob190	115°25'20"	C		139.86 C		
IT IIIC DP 86065	PEG 110 DP 594659	ob51	86°04'20"	C		76.74 C		

Mark Name	Mark Condition	Description
IT 1 DP 594659		20mmØ iron tube 500mm long. Buried 0.3m in pasture. See PRM diagram DP 594659.
IT IIIC DP 86065		In paddock
IT IV DP 157236		20mm Iron Tube down 0.20m
IT XVII DP 86065		20mmØ iron tube presumed 500mm long. Buried 0.3m in pasture. See PRM diagram DP 594659.
IT XXXX DP 156602		Position in vehicle crossing. No metal detector noise.
PEG (11) DP 196179		Reinstated PEG DP 35012

*** End of Report ***

LT 594659 Schedule/Memorandum

Land registration district
North Auckland

Territorial authority
Auckland Council

Amalgamation Conditions

Parcels shown with a prefix of *HL*- include height-limited boundaries

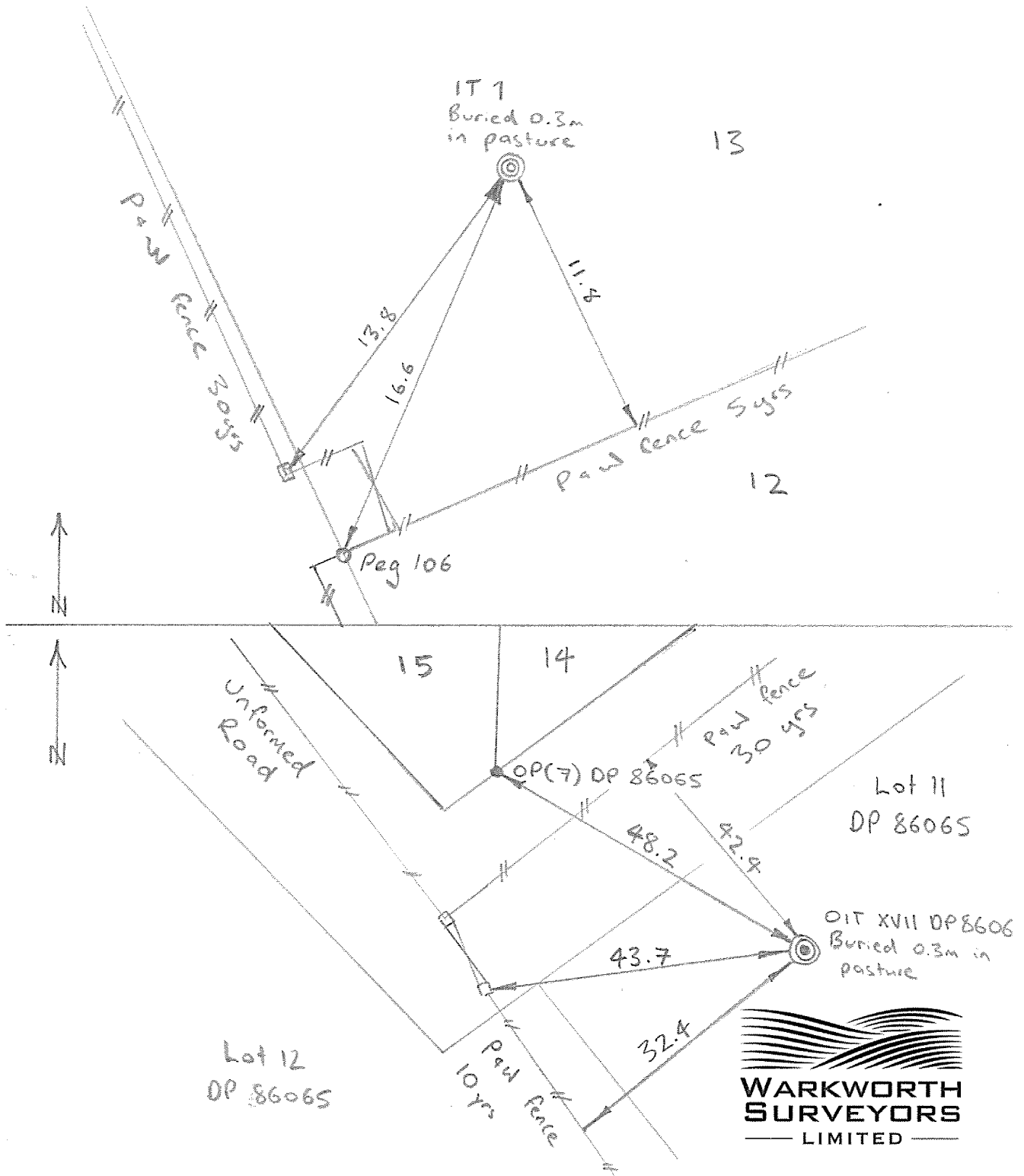
That Lot 15 hereon and Lot 2 DP 207701 (RT NA136B/15) be held in the same Record of Title (RT 1146513 pre-allocated).

That Lot 13 hereon, Lot 4 DP 555261 & Lot 5 DP 128192 (RT 966908) and Lot 10 DP 86065 (RT NA43D/659) be held in the same Record of Title (RT 1146511 pre-allocated).

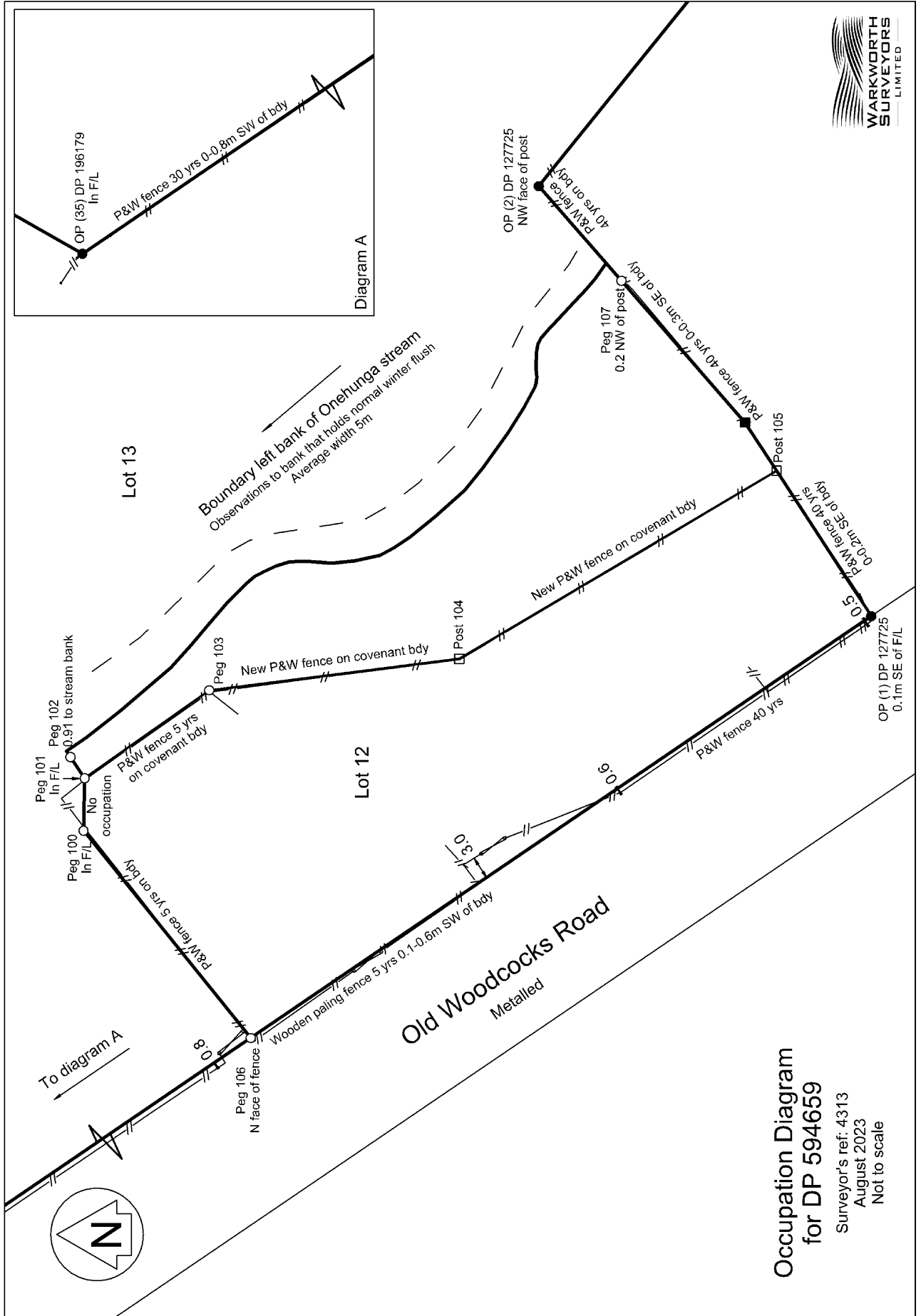
Occupation Diagram

PRM Diagrams

PAGE 1/1	SURVEYOR <u>AM</u>	INSTRUMENT RTK GNSS (blue)	JOB No. <u>4313</u>
	DATE <u>08/23</u>		PLAN No. <u>DP 594659</u>



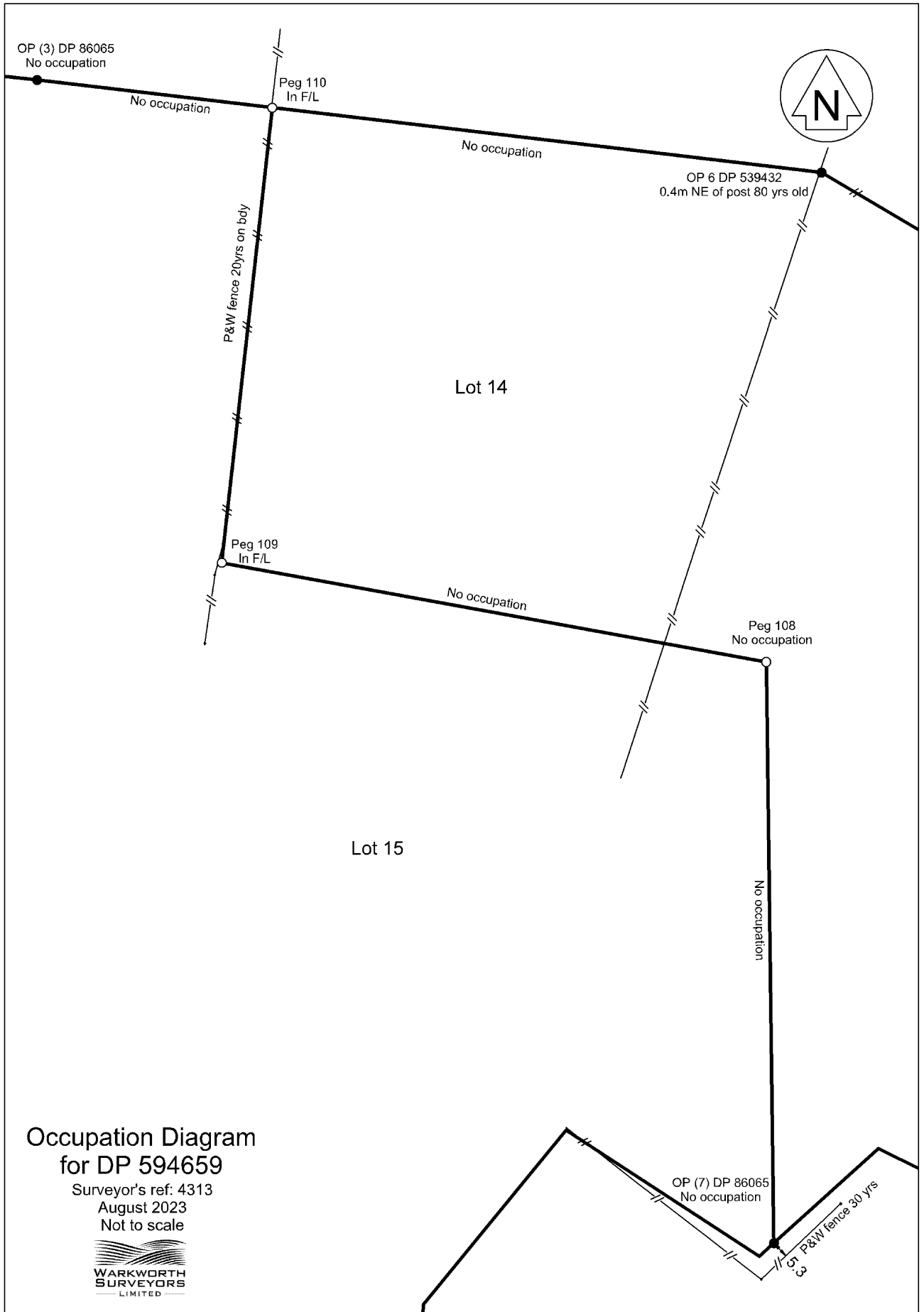
Occupation Diagram

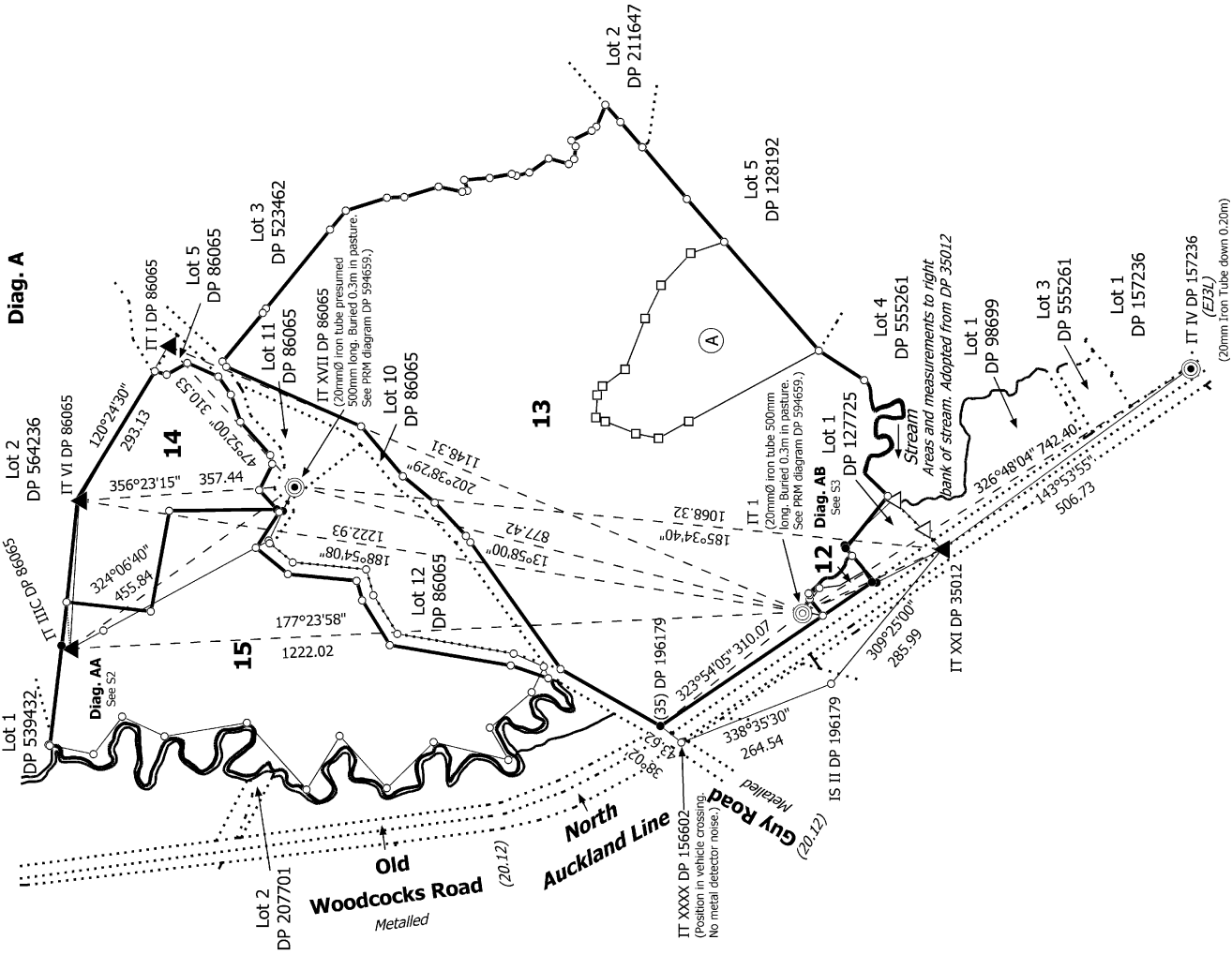
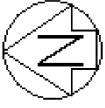


**Occupation Diagram
for DP 594659**

Surveyor's ref: 4313
August 2023
Not to scale

Occupation Diagram





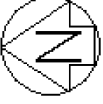
Note:
 All observations have been made using RTK GNSS survey equipment, unless shown otherwise.
 TS = Total station observation.

Auckland Council Reference: SUB 60407502
 Surveyor's Reference: 4313

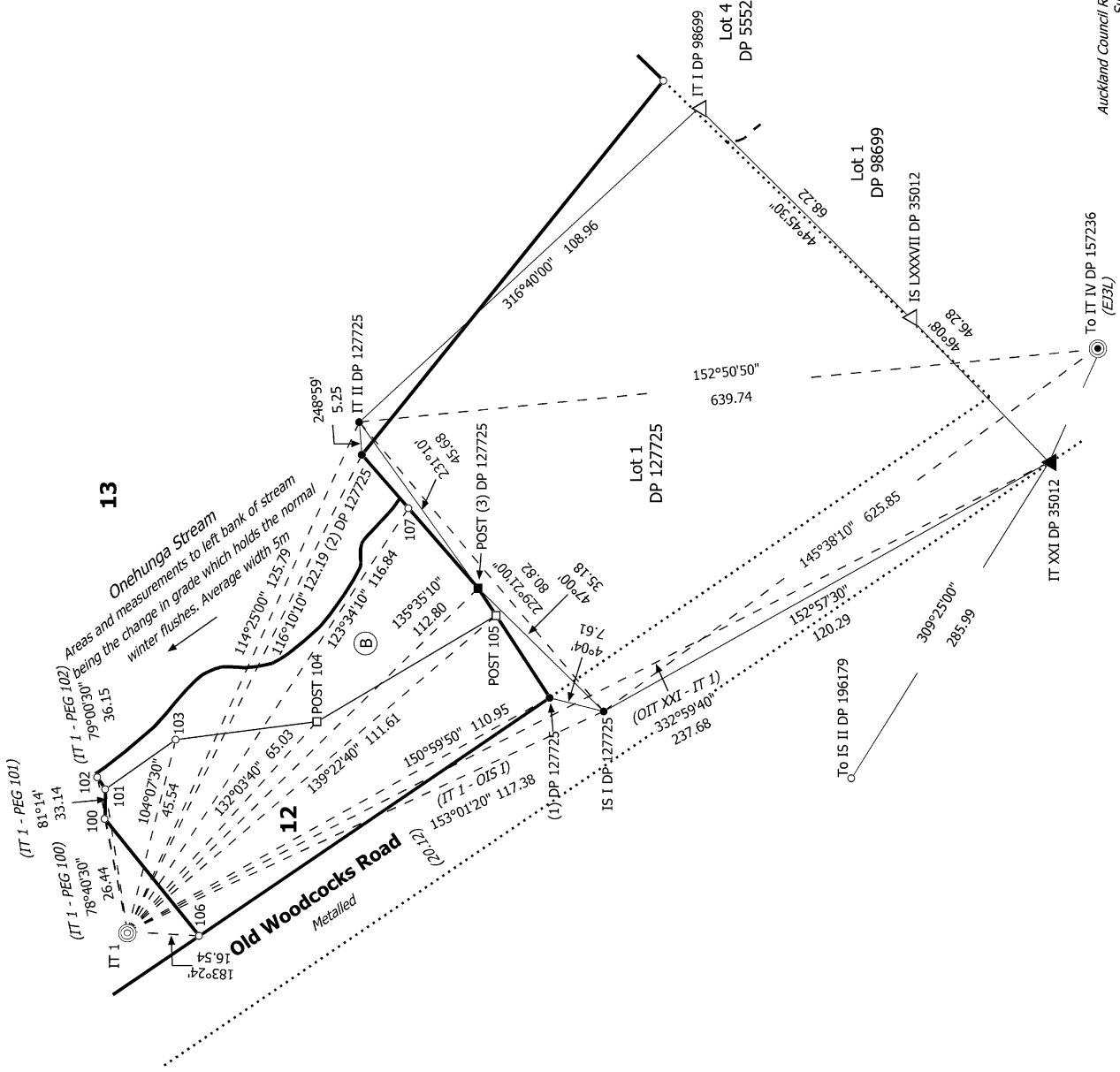
Surveyor: Graeme David Smith
 Firm: Warkworth Surveyors Limited
 Date of Survey: 8/08/2023

Do not scale
 Land District: North Auckland
 Digitally Generated Plan
 Generated on: 06/12/2023 06:51 am | Page 15 of 20

Lots 12 & 13 being a Subdivision of Lot 7 DP 196179 and Lots 14 & 15 being a subdivision of Lots 6 & 8 DP 86065.
 Record of Survey
 DP 594659
 Deposited on: 7/11/2023



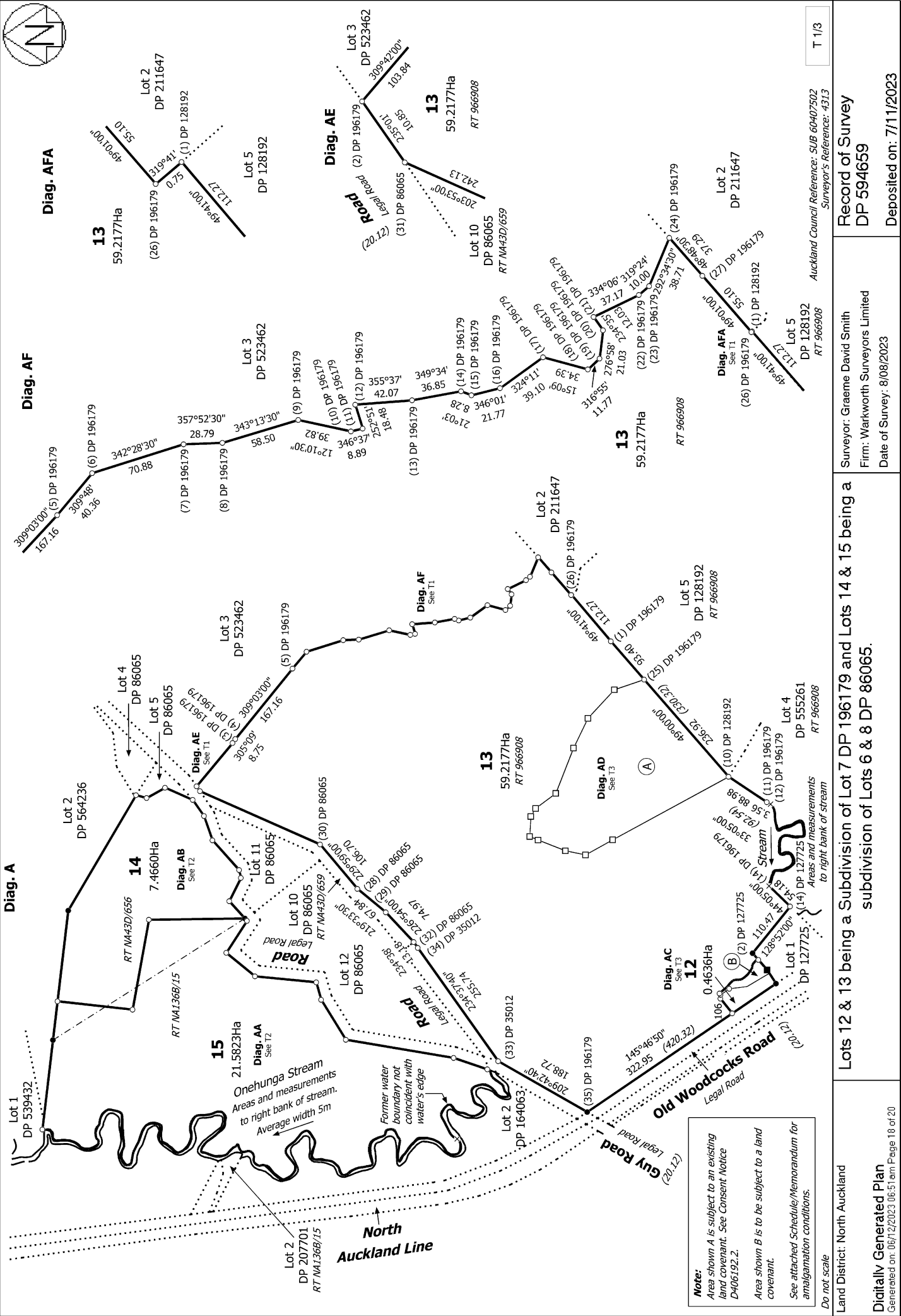
Diag. AB



Lots 12 & 13 being a Subdivision of Lot 7 DP 196179 and Lots 14 & 15 being a subdivision of Lots 6 & 8 DP 86065.

Surveyor: Graeme David Smith
Firm: Markworth Surveyors Limited
Date of Survey: 8/08/2023

Record of Survey
DP 594659
Deposited on: 7/11/2023



Note:
 Area shown A is subject to an existing land covenant. See Consent Notice D406192.2.
 Area shown B is to be subject to a land covenant.
 See attached Schedule/Memorandum for amalgamation conditions.

Do not scale

Land District: North Auckland

Digitally Generated Plan

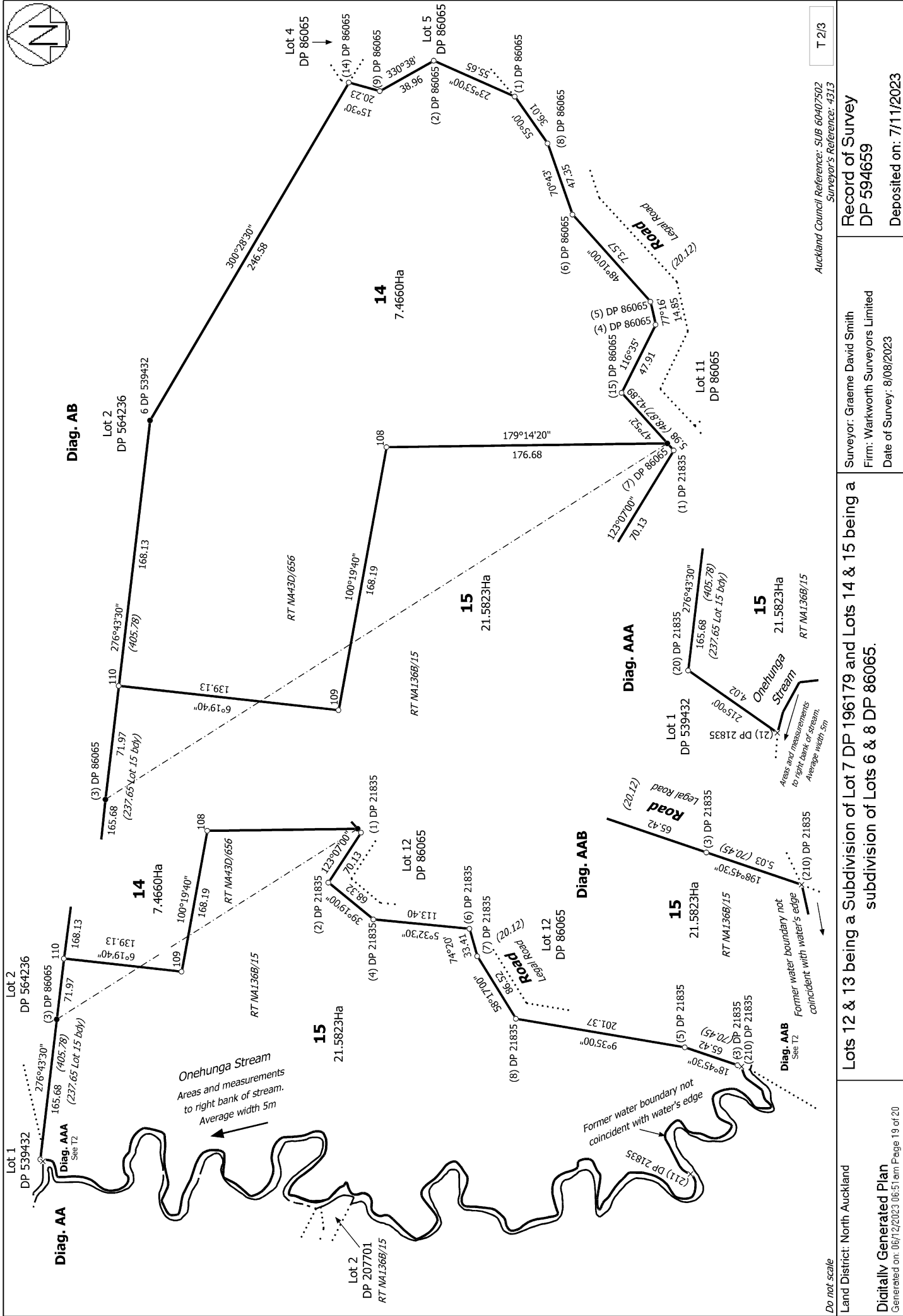
Generated on: 06/12/2023 06:51:41 Page 18 of 20

Lots 12 & 13 being a Subdivision of Lot 7 DP 196179 and Lots 14 & 15 being a subdivision of Lots 6 & 8 DP 86065.

Surveyor: Graeme David Smith
 Firm: Warkworth Surveyors Limited
 Date of Survey: 8/08/2023

Record of Survey
DP 594659
 Deposited on: 7/11/2023

Auckland Council Reference: SUB 60407502
 Surveyor's Reference: 4313
 T 1/3



Do not scale

Land District: North Auckland

Digitally Generated Plan

Generated on: 06/12/2023 06:51:01 AM Page 19 of 20

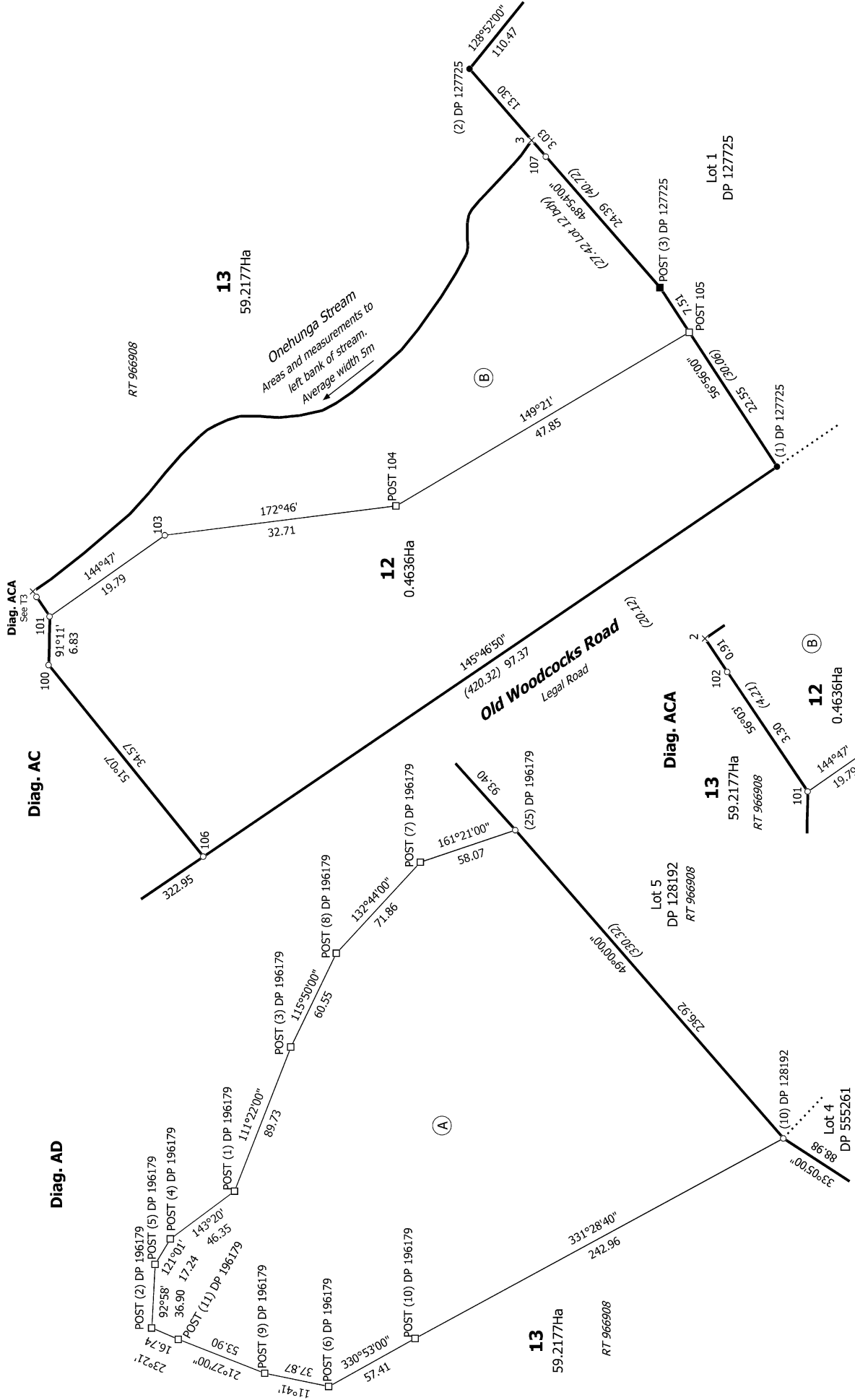
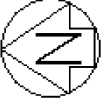
Lots 12 & 13 being a Subdivision of Lot 7 DP 196179 and Lots 14 & 15 being a subdivision of Lots 6 & 8 DP 86065.

Surveyor: Graeme David Smith
 Firm: Markworth Surveyors Limited
 Date of Survey: 8/08/2023

Record of Survey
 DP 594659
 Deposited on: 7/11/2023

Auckland Council Reference: SUB 60407502
 Surveyor's Reference: 4313

T 2/3



Auckland Council Reference: SUB 60407502 Surveyor's Reference: 4313		T 3/3
Do not scale		
Land District: North Auckland	Lots 12 & 13 being a Subdivision of Lot 7 DP 196179 and Lots 14 & 15 being a subdivision of Lots 6 & 8 DP 86065.	
Digitally Generated Plan	Record of Survey DP 594659	
Generated on: 06/12/2023 06:51:01 AM Page 20 of 20	Surveyor: Graeme David Smith Firm: Warkworth Surveyors Limited Date of Survey: 8/08/2023	
	Deposited on: 7/11/2023	