



Record of Survey - DP 605966

Survey Number DP 605966
Surveyor Reference 33 Haast Street
Surveyor James Matthew Gasson
Survey Firm Civix Limited
Surveyor Declaration I James Matthew Gasson, being a licensed cadastral surveyor, certify that--
(a) this dataset provided by me and its related survey are accurate, correct and in accordance with the Cadastral Survey Act 2002 and Cadastral Survey Rules 2021; and
(b) the survey was undertaken by me or under my personal direction.
Declared on 16 Sep 2024 09:58 AM

Survey Details

Dataset Description Areas 1 & B-J on Lot 1 DP 16202
Purpose Lease
Status Deposited **Type** Parcels without Survey Information
Land District North Auckland **Survey Class** Class A
Meridional Circuit Mount Eden OCD **Vertical Datum** None

Survey Dates

Surveyed Date 14/06/2024 **Certified Date** 16/09/2024
Submitted Date 16/09/2024 09:58:28 **Survey Approval Date** 27/09/2024
Deposit Date 19/11/2024

Referenced Surveys

Survey Number	Land District	Bearing Correction
DP 16202	North Auckland	0°00'00"
DP 19112	North Auckland	0°00'00"
DP 317528	North Auckland	0°00'00"
SO 319247	North Auckland	0°00'00"
DP 82746	North Auckland	0°00'00"
DP 57937	North Auckland	0°00'00"

Territorial Authorities

Auckland Council

Comprised In

RT NA410/119

Created Parcels

Parcels	Parcel Intent	Area	RT Reference
Area 1 Deposited Plan 605966	Lease	0.3049 Ha	1190794
Area D Deposited Plan 605966	Easement		
Area H Deposited Plan 605966	Easement		
Area G Deposited Plan 605966	Easement		
Area E Deposited Plan 605966	Easement		



Record of Survey - DP 605966

Created Parcels

Parcels	Parcel Intent	Area	RT Reference
Area B Deposited Plan 605966	Easement		
Total Area		<hr/> 0.3049 Ha	

Mark and Vector

Survey Number DP 605966
Meridional Circuit Mount Eden OCD

From	To	Code	Bearing	Adpt Surv	Bearing Correction	Distance	Adpt Surv	Class
IT (22) SO 57762	UNMK 32 DP 605966	ob4	161°33'00"	A DP 19112	0°00'00"	23.82 C		
UNMK 32 DP 605966	UNMK 16 DP 605966	ob96	161°33'00"	A DP 19112	0°00'00"	11.99 C		Class A
UNMK 16 DP 605966	PEG 2 DP 19112	ob11	161°33'00"	A DP 19112	0°00'00"	0.85 C		Class A
PEG 2 DP 19112	PEG 1 DP 317528	ob3	161°33'00"	A DP 19112	0°00'00"	21.98 A	DP 317528	Class A
PEG 1 DP 317528	IS (9) DP 16202	ob2	161°33'00"	A DP 19112	0°00'00"	27.76 A	DP 317528	Class A
IS (9) DP 16202	PEG (7) DP 16202	ob1	161°33'00"	A DP 19112	0°00'00"	2.20 A	DP 19112	Class A
PEG (7) DP 16202	PEG (51) DP 57937	ob0	84°43'30"	A DP 57937	0°00'00"	29.62 A	DP 57937	Class A
PEG (51) DP 57937	PEG (52) DP 82746	ob8	84°43'30"	A DP 82746	0°00'00"	7.04 A	DP 82746	Class A
PEG (52) DP 82746	IT II DP 82746	ob9	84°43'30"	A DP 82746	0°00'00"	12.37 A	DP 82746	Class A
IT II DP 82746	UNMK 17 DP 605966	ob10	84°43'30"	A SO 319247	0°00'00"	1.18 C		Class A
UNMK 17 DP 605966	PEG (8) SO 319247	ob13	84°43'30"	A SO 319247	0°00'00"	2.54 C		
PEG (45) SO 319247	UNMK 80 DP 605966	ob5	274°13'00"	A DP 16202	0°00'00"	1.85 C		Class A
UNMK 80 DP 605966	PEG DP 348583	ob29	274°13'00"	A DP 16202	0°00'00"	6.24 C		
PEG (46) SO 319247	UNMK 83 DP 605966	ob7	94°13'00"	A DP 16202	0°00'00"	0.16 C		Class A
UNMK 83 DP 605966	UNMK 84 DP 605966	ob31	94°13'00"	A DP 16202	0°00'00"	2.62 C		Class A
UNMK 84 DP 605966	PEG (68) DP 16202	ob33	94°13'00"	A DP 16202	0°00'00"	6.17 C		
UNMK 16 DP 605966	UNMK 621 DP 605966	ob12	71°33'00"	C		2.44 C		Class A
UNMK 621 DP 605966	UNMK 602 DP 605966	ob36	71°33'00"	C		5.00 C		Class A
UNMK 602 DP 605966	UNMK 603 DP 605966	ob15	141°21'00"	C		1.68 C		Class A
UNMK 603 DP 605966	UNMK 604 DP 605966	ob16	114°41'00"	C		1.68 C		Class A
UNMK 604 DP 605966	UNMK 605 DP 605966	ob18	87°59'00"	C		1.68 C		Class A
UNMK 605 DP 605966	UNMK 619 DP 605966	ob19	71°29'00"	C		8.41 C		Class A
UNMK 619 DP 605966	UNMK 606 DP 605966	ob35	71°29'00"	C		2.14 C		Class A

Mark and Vector

Survey Number DP 605966

Meridional Circuit Mount Eden OCD

From	To	Code	Bearing	Adpt Surv	Bearing Correction	Distance	Adpt Surv	Class
UNMK 606 DP 605966	UNMK 607 DP 605966	ob20	76°15'00"	C		6.44 C		Class A
UNMK 607 DP 605966	UNMK 616 DP 605966	ob21	83°25'00"	C		3.72 C		Class A
UNMK 609 DP 605966	UNMK 610 DP 605966	ob22	83°25'00"	C		2.44 C		Class A
UNMK 610 DP 605966	UNMK 611 DP 605966	ob23	110°53'00"	C		3.10 C		Class A
UNMK 611 DP 605966	UNMK 612 DP 605966	ob24	352°47'00"	C		5.44 C		Class A
UNMK 612 DP 605966	UNMK 613 DP 605966	ob25	84°53'00"	C		16.16 C		Class A
UNMK 613 DP 605966	UNMK 614 DP 605966	ob26	171°30'00"	C		12.25 C		Class A
UNMK 614 DP 605966	UNMK 615 DP 605966	ob27	173°03'00"	C		11.96 C		Class A
UNMK 615 DP 605966	UNMK 17 DP 605966	ob28	173°33'00"	C		34.29 C		Class A
UNMK 83 DP 605966	UNMK 85 DP 605966	ob32	195°05'00"	C		6.40 C		Class A
UNMK 85 DP 605966	UNMK 86 DP 605966	ob38	198°46'00"	C		5.28 C		Class A
UNMK 86 DP 605966	UNMK 89 DP 605966	ob39	202°48'00"	C		26.06 C		Class A
UNMK 89 DP 605966	UNMK 90 DP 605966	ob40	200°08'00"	C		16.43 C		Class A
UNMK 90 DP 605966	UNMK 91 DP 605966	ob41	177°19'00"	C		2.17 C		Class A
UNMK 91 DP 605966	UNMK 92 DP 605966	ob42	173°07'00"	C		17.11 C		Class A
UNMK 92 DP 605966	UNMK 93 DP 605966	ob43	178°00'00"	C		7.98 C		Class A
UNMK 93 DP 605966	UNMK 94 DP 605966	ob44	173°03'00"	C		23.08 C		Class A
UNMK 94 DP 605966	UNMK 95 DP 605966	ob45	151°30'00"	C		2.11 C		Class A
UNMK 95 DP 605966	UNMK 96 DP 605966	ob46	151°30'00"	C		1.72 C		Class A
UNMK 96 DP 605966	UNMK 609 DP 605966	ob47	173°18'00"	C		49.38 C		Class A
UNMK 80 DP 605966	UNMK 99 DP 605966	ob30	202°53'00"	C		75.63 C		Class A
UNMK 99 DP 605966	UNMK 100 DP 605966	ob48	197°04'00"	C		6.40 C		Class A
UNMK 100 DP 605966	UNMK 106 DP 605966	ob49	175°11'00"	C		6.76 C		Class A
UNMK 106 DP 605966	UNMK 107 DP 605966	ob50	173°47'00"	C		22.36 C		Class A

Mark and Vector

Survey Number DP 605966
Meridional Circuit Mount Eden OCD

From	To	Code	Bearing	Adpt Surv	Bearing Correction	Distance	Adpt Surv	Class
UNMK 107 DP 605966	UNMK 108 DP 605966	ob51	238°30'00"	C		3.25 C		Class A
UNMK 108 DP 605966	UNMK 109 DP 605966	ob52	247°52'00"	C		3.82 C		Class A
UNMK 109 DP 605966	UNMK 110 DP 605966	ob53	275°30'00"	C		10.20 C		Class A
UNMK 110 DP 605966	UNMK 111 DP 605966	ob54	185°30'00"	C		2.60 C		Class A
UNMK 111 DP 605966	UNMK 112 DP 605966	ob55	173°24'00"	C		18.69 C		Class A
UNMK 112 DP 605966	UNMK 113 DP 605966	ob56	161°33'00"	C		20.74 C		Class A
UNMK 113 DP 605966	UNMK 114 DP 605966	ob57	161°33'00"	C		2.67 C		Class A
UNMK 114 DP 605966	UNMK 602 DP 605966	ob58	161°33'00"	C		7.80 C		Class A
UNMK 84 DP 605966	UNMK 115 DP 605966	ob34	200°25'00"	C		1.79 C		Class A
UNMK 115 DP 605966	UNMK 116 DP 605966	ob59	290°25'00"	C		1.00 C		Class A
UNMK 116 DP 605966	UNMK 118 DP 605966	ob60	200°20'30"	C		56.37 C		Class A
UNMK 118 DP 605966	UNMK 95 DP 605966	ob61	173°18'00"	C		48.48 C		Class A
UNMK 622 DP 605966	UNMK 623 DP 605966	ob62	339°42'00"	C		2.27 C		Class A
UNMK 623 DP 605966	UNMK 624 DP 605966	ob63	341°33'00"	C		4.39 C		Class A
UNMK 624 DP 605966	UNMK 625 DP 605966	ob64	341°33'00"	C		2.04 C		Class A
UNMK 625 DP 605966	UNMK 626 DP 605966	ob66	341°33'00"	C		19.82 C		Class A
UNMK 626 DP 605966	UNMK 627 DP 605966	ob68	347°15'00"	C		3.12 C		Class A
UNMK 627 DP 605966	UNMK 628 DP 605966	ob69	353°24'00"	C		10.67 C		Class A
UNMK 628 DP 605966	UNMK 629 DP 605966	ob70	353°24'00"	C		2.60 C		Class A
UNMK 629 DP 605966	UNMK 630 DP 605966	ob72	83°12'00"	C		11.53 C		Class A
UNMK 630 DP 605966	UNMK 631 DP 605966	ob73	47°39'00"	C		4.31 C		Class A
UNMK 631 DP 605966	UNMK 632 DP 605966	ob74	12°22'00"	C		3.64 C		Class A
UNMK 632 DP 605966	UNMK 633 DP 605966	ob75	353°41'00"	C		29.26 C		Class A
UNMK 633 DP 605966	UNMK 636 DP 605966	ob76	8°37'00"	C		4.44 C		Class A

Mark and Vector

Survey Number DP 605966
Meridional Circuit Mount Eden OCD

From	To	Code	Bearing	Adpt Surv	Bearing Correction	Distance	Adpt Surv	Class
UNMK 636 DP 605966	UNMK 637 DP 605966	ob77	20°49'00"	C		10.03 C		Class A
UNMK 637 DP 605966	UNMK 638 DP 605966	ob78	53°07'00"	C		4.85 C		Class A
UNMK 638 DP 605966	UNMK 639 DP 605966	ob80	173°07'00"	C		15.50 C		Class A
UNMK 639 DP 605966	UNMK 640 DP 605966	ob81	181°05'00"	C		4.92 C		Class A
UNMK 640 DP 605966	UNMK 641 DP 605966	ob82	172°55'00"	C		66.19 C		Class A
UNMK 641 DP 605966	UNMK 642 DP 605966	ob83	172°55'00"	C		2.00 C		Class A
UNMK 642 DP 605966	UNMK 643 DP 605966	ob84	172°55'00"	C		2.29 C		Class A
UNMK 643 DP 605966	UNMK 644 DP 605966	ob85	238°52'00"	C		4.81 C		Class A
UNMK 644 DP 605966	UNMK 645 DP 605966	ob86	257°39'00"	C		9.28 C		Class A
UNMK 645 DP 605966	UNMK 622 DP 605966	ob87	251°20'00"	C		6.62 C		Class A
UNMK 32 DP 605966	UNMK 113 DP 605966	ob97	83°07'00"	C		7.59 C		Class A
UNMK 621 DP 605966	UNMK 648 DP 605966	ob37	341°33'00"	C		7.80 C		Class A
UNMK 648 DP 605966	UNMK 114 DP 605966	ob98	71°33'00"	C		5.00 C		Class A
UNMK 625 DP 605966	UNMK 641 DP 605966	ob92	83°09'00"	C		21.90 C		Class A
UNMK 624 DP 605966	UNMK 642 DP 605966	ob94	83°09'00"	C		21.50 C		Class A
UNMK 603 DP 605966	UNMK 650 DP 605966	ob17	357°30'00"	C		3.10 C		Class A
UNMK 650 DP 605966	UNMK 654 DP 605966	ob99	71°54'00"	C		12.27 C		Class A
UNMK 654 DP 605966	UNMK 655 DP 605966	ob100	102°49'00"	C		1.34 C		Class A
UNMK 655 DP 605966	UNMK 656 DP 605966	ob101	83°41'00"	C		8.67 C		Class A
UNMK 656 DP 605966	UNMK 657 DP 605966	ob102	6°04'00"	C		6.55 C		Class A
PEG (45) SO 319247	PEG (46) SO 319247	ob6	94°13'00"	A	DP 16202	0°00'00"	3.13 C	Class A
UNMK 657 DP 605966	UNMK 658 DP 605966	ob103	96°04'00"	C		2.00 C		Class A
UNMK 658 DP 605966	UNMK 616 DP 605966	ob104	186°04'00"	C		9.25 C		Class A
UNMK 616 DP 605966	UNMK 609 DP 605966	ob105	83°25'00"	C		7.65 C		Class A



Mark and Vector

Survey Number DP 605966

Meridional Circuit Mount Eden OCD

From	To	Code	Bearing	Adpt Surv	Bearing Correction	Distance	Adpt Surv	Class
UNMK 602 DP 605966	UNMK 622 DP 605966	ob14	68°52'00"	C		7.06	C	
UNMK 638 DP 605966	UNMK 91 DP 605966	ob79	34°27'00"	C		6.22	C	

*** End of Report ***

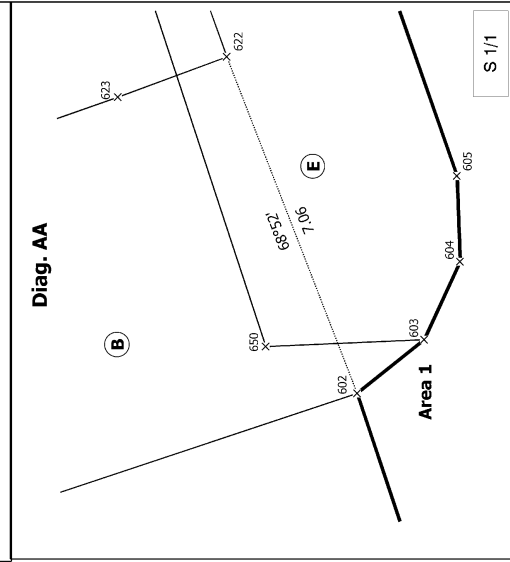
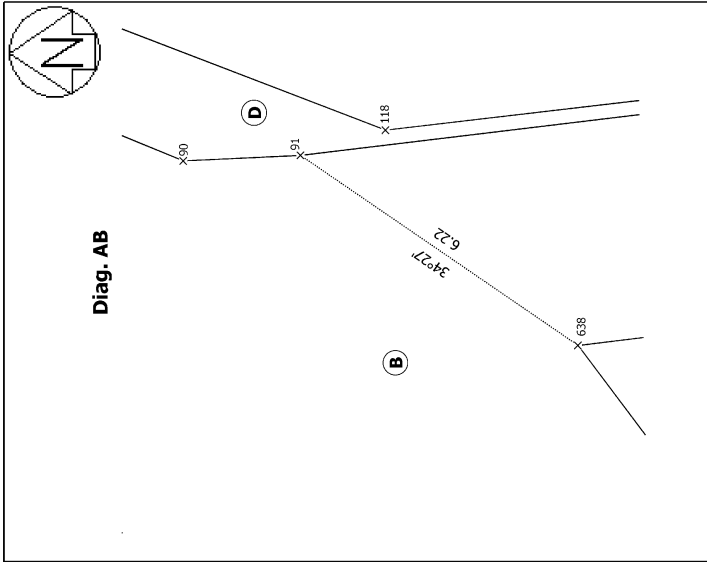
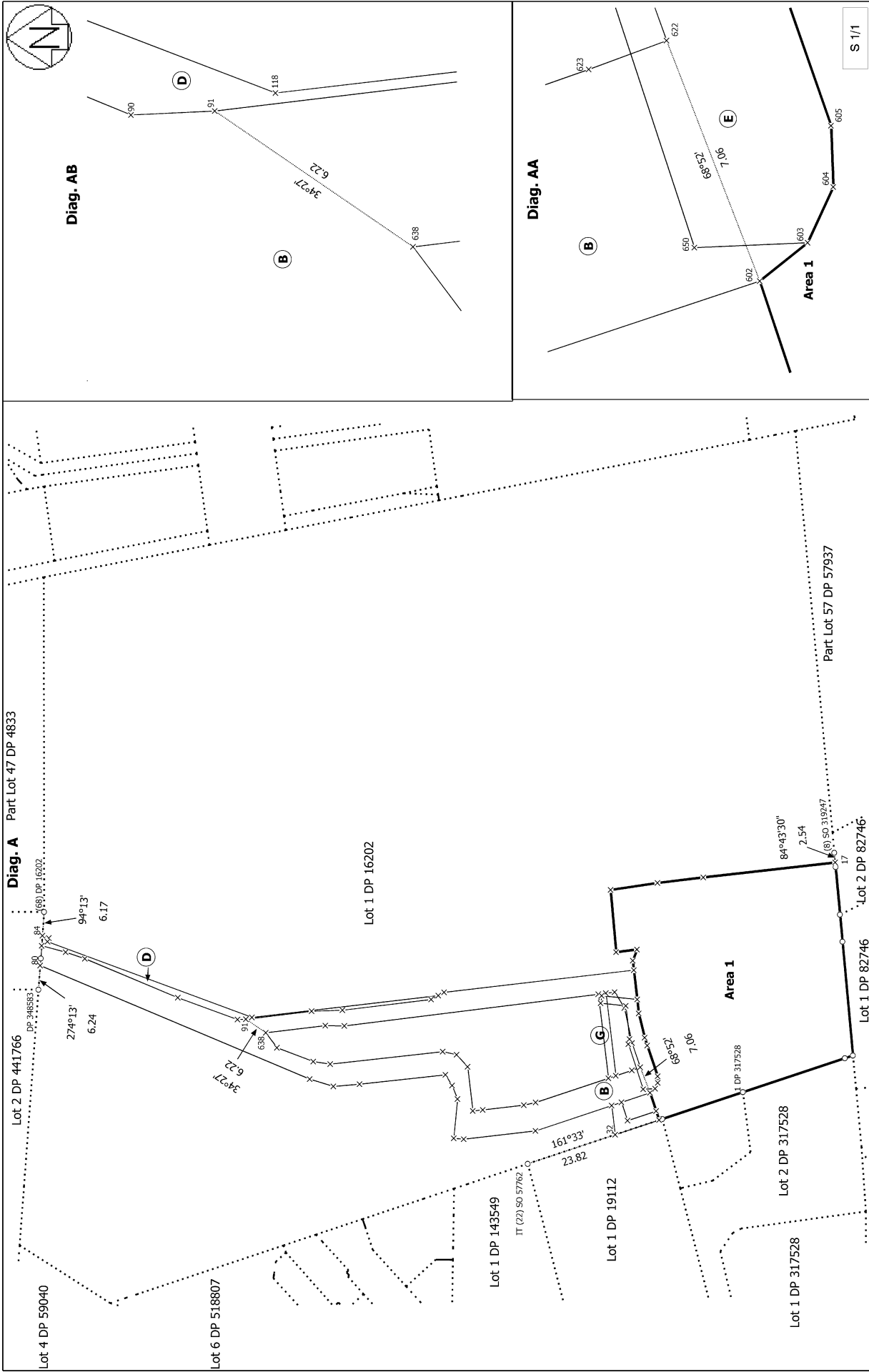


Land Registration District	Plan Number
North Auckland	DP 605966

Territorial Authority (the Council)
Auckland Council

Memorandum of Easements			
Purpose	Shown	Burdened Land (Servient Tenement)	Benefited Land (Dominant Tenement)
Right of way			
Right to convey electricity, telecommunications, water	Area B	Lot 1 DP 16202	Area 1
Right to convey electricity, telecommunications, water	Area D	Lot 1 DP 16202	Area 1
Right to convey electricity	Area G & H	Lot 1 DP 16202	Area 1
Right to drain water	Area E	Lot 1 DP 16202	Area 1

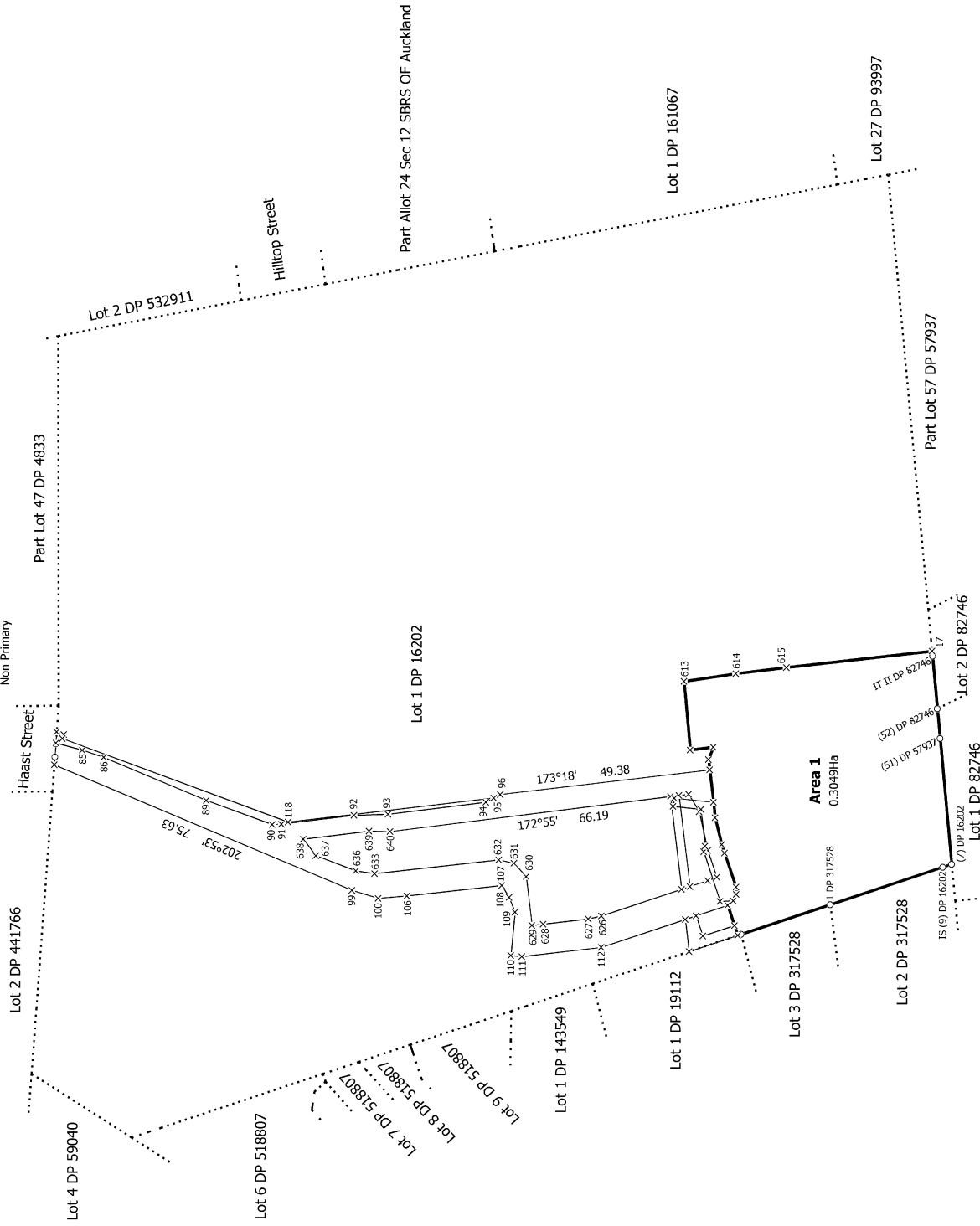
Schedule of Existing Easements in Gross		
Purpose	Burdened Land (Servient Tenement)	Creating Document Reference
Electricity Transmission Right	Lot 1 DP 16202	Transfer A79975



<p>Land District: North Auckland Dataset Type: Parcels without Survey Information Digitally Generated Plan Generated on: 13/12/2024 3:57pm Page 9 of 14</p>	<p>Surveyor: James Matthew Gasson Firm: Cvxix Limited Date of Survey: 14/06/2024</p>	<p>Record of Survey DP 605966 Deposited on: 19/11/2024</p>
---	--	--



Diag. A
Non Primary



T 1/5

<p>Land District: North Auckland Dataset Type: Parcels without Survey Information Digitally Generated Plan Generated on: 13/12/2024 3:57pm Page 10 of 14</p>	<p>Areas 1 & B-J on Lot 1 DP 16202</p>	<p>Surveyor: James Matthew Gasson Firm: CiviX Limited Date of Survey: 14/06/2024</p>	<p>Record of Survey DP 605966 Deposited on: 19/11/2024</p>
--	---	--	--

