

Pūrongo ā-tau

a Ngā Pou Taunaha o Aotearoa

2022/23





Ngā Pou Taunaha o Aotearoa
New Zealand Geographic Board

I whakaputaina i te Whiringa-ā-nuku 2023
e Ngā Pou Taunaha o Aotearoa, Pouaka Poutāpetā 5501,
Te Whanga-nui-a-Tara 6145, Aotearoa

ISSN 1179-4550 tānga
ISSN 1179-4569 ipurangi

Ka kitea tēnei tuhinga i: <https://www.linz.govt.nz/resources/annual-report/new-zealand-geographic-board-annual-report-2022223>



E raihanatia ana te mahi nei i raro i te raihana Creative Commons Attribution 4.0 New Zealand. Ina koa, e pai ana tō tārua, tō tuari me tō whakahāngai kē i te mahi, ki te tohu koe nā te Karauna ake te mahi me tō ū ki ētahi atu tikanga o te Raihana. Ka kitea he kape o te Raihana nei i: <https://creativecommons.org/licenses/by/4.0/> Kia mōhio mai rā, kāore e whakaetia te whakamahi i te tohu, te waitohu, te Ariā rānei o tētahi tari, o te kāwanatanga rānei e takahia ai ngā tikanga kua whakaritea i raro i te Ture Tiaki i te Kara, i te Tohu me te Ingoa 1981. Me mātua tuhi te kōrero e whakaatu ana nā te Karauna ake ngā kōrero, kua mā te tārua i te tohu, te waitohu, te Ariā rānei.

© Manatārua nā te Karauna

Mahi toi nā Cliff Whiting kua mate nei, nā Ngā Pou Taunaha o Aotearoa te manatārua. E pā ana tēnei mahi toi ki a Ngātoro-i-Rangi rāua ko Tia me ngā maunga tipua. He tūpuna a Ngātoro-i-Rangi rāua ko Tia i ū mai ki Aotearoa i runga i te waka o Te Arawa. Ka haere tahi rāua ki uta e ahū atu ana ki te pito whakarunga o te awa o Waikato me Te Puku-o-te-ika. I a rāua e haere ana ka taunahatia ētahi tārainga matawhenua. Tohua ana e ngā kōrero mō ngā mahi a Ngātoro-i-Rangi i ngā maunga o Te Puku-o-Te-ika-a-Māui te hōhonu o ngā mātauranga o te Māori o nehe ki te aronuku o ngā puia, ngā ahi tipua o te rohe. E whakaatu ana te mahi toi nei i a Ngātoro-i-Rangi me te rukea atu o tana pononga a Ngāuruhoe ki te waha o te puia.

Whakaahua 1 (karakia) Veronica tetragona kei ngā Ruahine. Ka kitea tēnei momo koromiko i ngā rohe tairanga o Te Ika-a-Māui. Whakamihi: Christopher Stephens, i whakaahuatia i te 22 o Hakihea 2022.

Contents

Pūrongo ā-Tau 2022/23

Pūrongo ā-Tau a Ngā Pou Taunaha o Aotearoa.

I tāpaea ki te Minita mō Toitū Te Whenua i runga i te whakahau a te wehenga 14 o te Ture o te New Zealand Geographic Board (Ngā Pou Taunaha o Aotearoa) 2008.

Karakia 3

Kupu a te Toihau 4

Mō te Poari 6

Te Mana Taunaha Wāhi o Aotearoa 6

Te wāhi ki a ia 6

Kaupapa, kawenga, mahi 7

Te Rautaki I 2020–2025 7

Mō te ingoa wāhi 8

Te ia o nāianeī mō te ingoa wāhi Māori 8

Ingoa wāhi tōrua 9

Ingoa wāhi kē 9

Ingoa wāhi Māori kua kohia 9

Ingoa wāhi mana 9

Whakamahinga ingoa wāhi a ngā arapāho 11

Whakatutukinga me ngā mahi i tutuki 12

Whakataunga 12

Kaupapahere, paerewa, aratohu me te ture 25

Torotoronga 26

Hononga 27

Tikanga Tūtohu 30

Mahere Ingoa Wāhi Tangata Whenua 30

Kāhetia o Aotearoa 32

Poari, komiti, kaimātaki, Tokomatua, hui 34

Poari me ngā komiti 34

Mema Poari me ngā kaimātaki auau te kitea 34

Tokomatua o te Poari 35

Hui a te Poari me ngā komiti 36

Tutukinga Ahumoni 37

Whakapā 38



Karakia

E Papa, e Rangī!

Kia turuki mai te maru atua nui

he āio-nuku, he āio-rangī, he āio matua

Kia mahea te ara

Kia pūrangiaho te titiro

Kia kotahi te ngākau

Kia toi te kupu, toi te mana, toi te aroha!

Hou!

Papatūānuku, Ranginui!

Extend unto us the divine sheltering mantle

Earthly harmony, heavenly serenity,
and the most great peace

Make clear the path ahead

And sight be true

And oneness of heart

That our words, spiritual power,
and harmony reign!

It is bound fast!

I āta tuhia e Shane Te Ruki (mema o te Poari
atu i te Paengawhāwhā 2020 ki te Hōngongoi
2023) mā Ngā Pou Taunaha o Aotearoa.

Kupu a te Toihau

E harikoa ana au ki te tāpae i te Pūrongo ā-Tau nei mā Ngā Pou Taunaha o Aotearoa.

Kei te iho tonu te ingoa wāhi ki te tohu i te wāhi me te wāhitau, te horopaki o te takiwā, ki te āwhina anō i a tātou kia tae atu ki te wāhi e hiahia haere ana tātou. I tua atu i ēnei āwhina taha kiko, ka whai tikanga te ingoa wāhi ki tō tātou tuakiritanga – ā-tangata, ā-motu. I ngā āhuatanga whai kiko, whai tikanga nei ka tutū te puehu i ōna wā ina whakaarotia te whakarerekē i te ingoa. Nā konei mātou i whai ai i ngā tikanga taunaha papai hei āwhina ki te pou whakataunga auau ka pūmau i roto i te wā, ka whakaaetia e ngā hapori me ngā iwi o Aotearoa.

Nōku te whiwhi ki te whai tonu i te tikanga o te 100-tau e arahina ai te Poari e te Kairūri-Matua ka noho hei Toihau, e kawea mai ai ngā wheako o te āta mahi i te mahi me ngā mātauranga o āku ake mahi rūri. E titiro whakamua ana mātou ki te whakanui i tō mātou rau tau ā te 2024 e hoki ai a mahara ki ngā āhuatanga kua pai ake i te whakarerekēhia me ērā kua mau tonu i roto i te wā.

E mōhio ana mātou kua huri te ao me te mārama haere o te tangata ki ngā mōtika iwi taketake me ngā uara kei te ahurea tuku iho. E āta whakaatahia ana tēnei i te kitea me te hokinga o mahara ki ngā ingoa wāhi. Kua noho te whakahoki ake i te ingoa wāhi Māori taketake hei puretumu ahurea i ngā whakataunga i raro i Te Tiriti o Waitangi.

Kei te kaha ake te aro o te tangata ki te reo Māori, ki ngā ingoa wāhi Māori nunui, me te whakahoki ake i te ingoa Māori taketake ake (te tuhi tika, te hoatu tohutō me te whakahua). E mōhio ana te Poari mō ngā panonitanga nei, e tino tautoko ana i ngā rautaki kāwanatanga e pā ana ki tēnei i a ia ka mahi i āna mahi.

I ēnei tau nei kua tahuri ake, kua whai whakaarotia, kua arotahitia e te ao nā runga i te tekau tau a Te Kotahitanga o ngā Whenua o te Ao mō te Ingoa Taketake 2022–2032 me ngā Whāinga Whanaketanga Ukiuki a Te Kotahitanga o ngā Whenua o te ao e hāngai ana. E kimi ana ētahi whenua maha i tētahi porihanga taurite, tautika, kauawhi. E whakaratoa ana e te ingoa wāhi tētahi huarahi tūturu, whakawairua anō ki te whakatika i ēnei āhuatanga mā te whakahoki ake i te mana me te tuakiritanga. Waihoki, e mōhio ana mātou ki te tika o te pupuri i ngā ingoa wāhi Pākehā hiranga anō – he tuku ihotanga pānga tahi tō tātou, e tika ana kia tiakina, kia kitea anō ngā kōrero mō tauwiwi. I ōna wā ka tōtara wāhi rua ō tātou hapori i ngā tono ingoa wāhi kūrururu nō reira ko te ara ka whāia mō te whakatau ko te noho mōhio me te whai whakaaro ki ngā whakaaro o te hapori katoa. Ka āta whai mātou kia mārama te kōrerohia o te take i panonihia ai.

E whakaū ana Te Tiriti o Waitangi ko ngāi Māori te tangata whenua ko ngāi Pākehā te tangata tiriti, e whai mana tahi ana ki te whenua nei hei kāinga, he taonga nā te katoa ngā ingoa wāhi o te motu. Whakahōnoretia ana tō tātou ahurea motuhake me ngā tuku ihotanga i ngā ingoa wāhi. Kei ngā kōrero mō te ingoa wāhi, ahakoa Māori, Pākehā rānei, e whai tikanga ai e tuhia ai ki te rae.

He tau tēnei i pokea ai e te mahi me tō mātou harikoa ki te kōrero i ētahi taipitopito o ā mātou mahi ki tēnei pūrongo ā-tau. Ko ngā mea rangatira tonu ko tā mātou:

- tuku waitohu hou, kōrero paetukutuku hou, me te whai kia kaha ake te kanohi kitea
- whakaputa mahere hou mō ngā Ingoa Wāhi Tangata Whenua
- āpiti i ētahi atu kōrero mō te ingoa wāhi ki te New Zealand Gazetteer¹
- āpiti oro whakahua ki ētahi ingoa wāhi Māori ka hia mano nei kei te New Zealand Gazetteer
- whai wāhi ki tētahi haerenga mātauranga mariko mā te akomanga mō ngā ingoa wāhi o Maniapoto.

Ka nui aku mihi ki ngā mema o te Poari, ina koa ki te tokotoru ka mutu te wāhi ki a rātou ā te Hōngongi 2023: a Bonita Bigham, a Chanel Clarke me Shane Te Ruki.

Kia mānawatia hoki e te Poari tō mātou Tokomatua mō tō rātou ngākau pūmau, ngākau kohara ki ngā mahi. Ka mihi anō ki tō mātou umanga manaaki, ki a Toitū Te Whenua e tautoko nei i ā mātou mahi.

Motuhake ana te kawenga a tēnei Poari hei mana taunaha mō te motu, rangatira ana hoki mātou ki te kawē i tēnei mahi ka tārai i te āhua o te motu.



Mr Anselm Haanen
Toihau

1. Rārangi ingoa wāhi ka taea te rangahau ā-tuihono: <https://gazetteer.linz.govt.nz/>

Mō te Poari

Te Mana Taunaha Wāhi o Aotearoa

I tīmata ake ngā whakaritenga mō te taunaha wāhi i Aotearoa i raro i te Porianga Matawhenua Roera o Rānana tae rawa ki te whakamanahia o Ngā Ture Taunaha Takiwā 1894 me te 1908. Nā ēnei ture i whai mana ai te Kāwana Tianara ki te whakamana ingoa wāhi.

Me āta whakatū rawa tētahi mana taunaha wāhi kia kore ai te iwi e pōkaikaha ki te tautoko anō i te whakaratoa o ētahi ratonga matua pērā i te poutāpeta me te teihana rerewē.

I te 1924 ka whakatūria e te Minita o te Whenua te Poari Matawhenua Hōnore o Aotearoa ki te whakaaroaro me te whakatakoto tūtohunga mō te ingoa wāhi me te ingoa tārainga whenua.

I te 1946 ka whakatūria te New Zealand Geographic Board i raro i te New Zealand Geographic Board Act 1946 kia noho ai ki a ia tonu te māna whakatau mō te ingoa wāhi. I te taha o ētahi whakapaipai me ētahi whakahounga, kua kawea mai ngā whakaritenga o te Ture 1946, tae atu ki te kohi ingoa wāhi Māori taketake ake, ki te New Zealand Geographic Board (Ngā Pou Taunaha o Aotearoa) Act 2008 o nāianei.

Te wāhi ki a ia

Ko te wāhi matua ki a mātou ko te:

- taunaha i te wāhi me te tārainga whenua ki te ingoa mana
- whakaae i te ingoa wāhi kua takoto kīhai i mana
- panoni i te ingoa wāhi (hei tauira, ka whakatika i te āhua o te tuhi)
- whakarerekē i te ingoa takiwā, ingoa rohe o te kaunihera
- tuku kupu ārahi mō te ingoa wāhi e noho wāhanga ana ki te puretumu ahurea i ngā whakatau kerēme o te Tiriti o Waitangi
- arotake ingoa whenua rāhui a te Karauna e whakahaeretia ana e Te Papa Atawhai.

Ka tiakina e mātou te *New Zealand Gazetteer* e whakarārangi ana i ō tātou ingoa wāhi.

Ka kapi i tō mātou mana taunaha a Aotearoa, ōna motu i waho, ngā takiwā takere moana kei te pūkawa raurarahi, me te takiwā ki te Ross Sea i Te Tiri o te Moana ki te Tonga. Kāore mātou e taunaha huarahi, i te ingoa rānei o te whenua o Aotearoa.

Ka whakatau ingoa wāhi mātou i runga i te tikanga taunaha papai. E tutuki ai tēnei he paerewa, he aratohu, he kaupapahere, he rautaki ā mātou. Ka āwhina anō ēnei ki te ārahi i te hunga tāpae tonu.

Tekau katoa ō mātou mema. Ka kopoua tētahi tokorua o Toitū Te Whenua ā-mana tūranga, ko tētahi tokowaru e te Minia mō Toitū Te Whenua. E tautokohia ana mātou e tētahi Tokomatua o roto o Toitū Te Whenua, ko tā rātou he whakatinana i ngā tukanga ā-ture ka tautoko ai i a mātou mō te taha whakahaere, mō te rangahau, te kupu ārahi, te totoro ki waho me te whakatutuki hōtaka.

Kaupapa, kawenga, mahi

Ko te kaupapa, ngā kawenga me ngā mahi a te Poari kua whakamāramatia i tō mātou ture. Ko ētahi ko te:

- whai kia rurukutia, kia aro whānui te ara ki te taunaha wāhi
- whakatū tikanga whai kiko tae atu ki te whakapāpā haere
- whakamana i ngā uara taha ahurea, taha tuku iho
- tuku āheinga ki tētahi mauranga whai mana o te ingoa wāhi mana.

Te Rautaki | 2020–2025

Ko ō mātou kaha, ka kōrerohia i ōna wāhi o te pūrongo nei, i aro nui ki ngā whāinga whai pānga nei:

- kia mana te taunahatia o ngā wāhi e hāngai ana, e tika ana, tae atu ki te taone nui, te taone, te paenoho me te wāhi i Aotearoa
- kia whai wāhi atu, kia kawē, kia whakatinana i ngā tikanga papai o te ao e aro whānui ai, e auau ai te taunaha wāhi
- kia totoro ki ngā hapori Māori ka whakahoki ake ai i ngā ingoa wāhi Māori taketake
- kia tuku kupu ārahi hei tautoko i te puretumu ahurea o ngā whakataunga ingoa wāhi i raro i te Tiriti o Waitangi
- kia kaha ake te totoro ki te iwi tūmatanui i tā mātou kitea ā-tuihono
- kia mahi kōtui ki ētahi whakahaere me ngā arapāho (pērā i te arapāho Māori) ki te whakatairanga i te whakamahia me te noho mārama ki te ingoa wāhi
- kia whakaputa tuhinga ki te reo Māori me te reo Ingarihi kia toro ai ki ngā apataki whānui
- kia mahi ngātahi ki a Toitū Te Whenua ki te whakatutuki i ā mātou whāinga whānui.

Whakahaeretia ai e tō mātou Tokomatua tētahi hōtaka mahi e hāngai ana ki ā mātou whāinga rautaki me ā mātou whāinga whāiti, e whakaatu ana i ngā take tōmua me te kitea o te kokenga. Ka pūrongo ngā mahi, ngā hōtaka, ngā kaupapa me ngā hōtaka mahi e te Tokomatua i ngā hui a te Poari. Ka whakatinana anō te Tokomatua i ngā mahi hei mahi ka ara ake i ngā hui.

Ko tā te pūrongo ā-tau nei he whakamiramira i tā mātou koke ki te whakatutuki i ā mātou koromakinga rautaki.

Mō te ingoa wāhi

Te ia o nā tata nei mō te ingoa wāhi Māori

E whakaatu ana te motu i te kaha piki ake o te mōhio mō te ao Māori me te reo Māori. Ka kitea anō tēnei i te arohia ake e te iwi tūmatanui me te arapāho te whakamanahia me te whakahokia ake o te ingoa wāhi Māori taketake ake. Ko te nuinga o ngā tono ingoa wāhi (tae atu ki te teihana rerewē) he tono mō te ingoa wāhi Māori me te piki haere anō o ngā tāpaenga whakaaro e tautoko ana i ēnei momo tono.

E hiranga ana te tiakina ā-motu nei o te tuku ihotanga ahurea mā roto i te ingoa wāhi taketake ake.

Ka taea e te ingoa wāhi Māori te whakaora, te whakawhānui mātauranga mō ngā kōrero kei muri, e whakaatatia ai:

- te tuku ihotanga
- ngā āhuatanga i pā mōna
- te hiranga taha ahurea
- te tikanga, pūtakenga rānei – ahakoa huahuatau, whakamārama, te kaupapa, ahakoa whaiaro, whakamaharatanga rānei.

E tika ana anō ēnei mō te ingoa Tauīwi. I rite tonu te taunahatia o te taone me te taone nui ki te āhuatanga hītori, te kaupuke, te tangata roera, te riri ā-hōia me te tangata ingoa nui, ki te whakamārama rānei i te āhua o te whenua. E hiranga ana te whakamana, te whakanui me te tiaki anō i tēnei paparanga. Nō reira i ōna wā ka tū mai he wero ki te whakatau i ngā putanga e tino hāngai ana ina wānangahia ngā tirohanga kē a ngā iwi o Aotearoa.

He kawenga ā-ture tā te Poari ki te whakahau kia whakamahia ko te ingoa wāhi Māori ake, heoi, kāore mātou e āta whai ki te whakakapi i te ingoa wāhi Tauīwi ki te ingoa Māori, engari kē ia ko te whakamihhi me te whakamana i te ingoa ake. Arā anō ētahi kōwhiringa atu i te whakakapi pērā i te ingoa tōrua, te ingoa kē, te kohi rānei ki te *New Zealand Gazetteer* kia kitea. He mea nui te whakatakoto me te whakawātea i ngā paparanga katoa o tō tātou hītori.

Ingoa wāhi tōrua

Ko te ingoa tōrua ko te noho mai o ētahi ingoa kē mō te wāhi, te tārainga whenua kotahi rānei. Ko te nuinga nō reo kē, reo kē me te taurite o te hiranga. I te ingoa tōrua ka kaha te noho tuatahi mai o te ingoa Māori hei whakaata i te ingoa ake, ka whai iho ko te ingoa Ingarihi. Ka whakamahia tahitia hei rerenga kotahi, pērā i te Maungakiekie / One Tree Hill.

I tēnei wā neke atu i te 630 ngā ingoa tōrua kei te *New Zealand Gazetteer*.

Ingoa wāhi kē

Ko te ingoa wāhi kē ko ētahi ingoa e rua neke atu e rite ana te hiranga ka taea te whakamahi mō te wāhi te tārainga rānei, te tikanga kei te reo Māori me te reo Ingarihi. Ka taea te whakamahi motuhake te whakamahi ngātahi rānei, pērā i te Maunga Kākarama te Rainbow Mountain rānei pātata ki Rotorua. Ko tētahi atu tauira ko Mount Taranaki ko Mount Egmont rānei (taihoa ka Taranaki Maunga i raro i te whakataunga Tiriti). I tēnei wā e 81 ngā tārainga ngā wāhi rānei whai ingoa kē kei te *New Zealand Gazetteer*.

Ingoa wāhi Māori kua kohia

Ko te ingoa wāhi kua kohia ko ngā ingoa Māori taketake mō te wāhi, te tārainga whenua he ingoa kē tōna e whakamahia ana (ahakoa ingoa mana, ingoa kua takoto rānei). Tērā pea nā ngā paparanga ahikā tuku iho kua maha ngā ingoa wāhi Māori taketake kua kohia. Hei tauira kua kohia a Puketāpapa me Pukewīwī mō Mount Roskill. I tēnei wā e pānuihia ana ētahi ingoa 1162 kua kohia ki te *New Zealand Gazetteer*.

Ingoa wāhi mana

Ko te ingoa wāhi mana ko ērā kua āta whakaaetia e te Poari kua mana rānei i raro i tētahi atu ture pērā i ngā whakataunga i raro i te Tiriti o Waitangi. Me mātua whakamahi te ingoa mana ki ngā tuhinga ōkawa katoa. Pērā i tērā kei te Ripanga 3 kei te whārangi 22, i tēnei wā e 22,240 ngā ingoa mana kei te *New Zealand Gazetteer*.

1,162

ngā ingoa wāhi Māori kua kohia kua whakaputaina ki te *New Zealand Gazetteer*



Whakaahua 1. A Shane Te Ruki e titiro ana mai i Kakepuku ki Te Kawa. Whakamihi: Andrew Penny, Tātai Aho Rau – LEARNZ, i whakaahuatia i te 8 o Huitanguru 2023.

Ingoa wāhi o Maniapoto

I te Huitanguru 2023 ka whakakanohitia e te mema o te Poari, e Shane Te Ruki, rāua ko te Hēkeretari, a Wendy Shaw, tētahi haerenga mātauranga mokowā whenua mariko i kīia ko ‘Ō mātou ingoa wāhi: Kōrero mō Maniapoto’. I mahia tēnei i te taha o Toitū Te Whenua me Tātai Aho Rau. I uru atu ki te pāhekoheko tuihono me te wheako mātauranga mō ngā tauira kura ētahi momo rauemi pērā i te ataata, te āhua me ētahi tūmahi pāhekoheko ka pārekareka ki te tauira e hōhonu ai tō rātou mārama me tō rātou whakaaro nui ki te ingoa wāhi, kaua ki Maniapoto anehe engari puta i te motu. Tirohia a <https://www.learnz.org.nz/placenames231>.

Kātahi anō ka pēnei rawa te nui o ngā tauira i whakauru mai ki te haerenga mariko nei (i āhua 13,000) o ngā haerenga mokowā whenua mariko ā-tau mō te kura mai i te timatanga i te tau 2012. I kōrero a Shane mō te hōhonu o ana hononga ki ngā whenua o ōna tūpuna i a ia ka kōrero mō Pirongia-te-aroaro-o-Kahurere, mō te Awa o Waipā, mō Kakepuku-te-rerenga-o-Kahu, mō Te Kōpua Marae, mō Kahurere, mō

Kahupeka, me Te Kawa. Ka whakamōhio ngā kōrero tuku iho nei i ngā tauira mō te takenga mai o ngā puia mai i te puku o te ika me te hanganga o ngā tārainga whenua i Maniapoto, me ngā mātauranga e puritia ana e te Māori mō te hononga kikokiko ki ngā koringa puia kei te poho o Papa. I kōrero a Wendy mō te āhua o te whakamahi i te *New Zealand Gazetteer* me te kōrero anō mō ā mātou tuhinga hei toro ki te ako.

Hiranga ana ngā uruparenga a ngā kaiako:

- ‘Koinei tā mātou kaupapa mō tēnei kaupeka kura! Inā te nui o te whai painga.’
- ‘He ara tino pai mō te whakaaro me te ako mō te ingoa wāhi rangatira o tō mātou takiwā.’
- ‘He haerenga kura rangatira – e mihi ana mātou mō te wā me te kaha i pau ki te hanga mai.’
- ‘Tino pai te “tūturutanga” o tēnei wheako. Kia rite anō kē te hangaia mō ngā rohe katoa o Aotearoa!’

Whakamahinga ingoa wāhi a ngā arapāho

Ka whakawhirinaki mātou ki ngā pae arapāho rau kia āwhina ki te hora whānui i ngā rongo mō te tono ingoa wāhi me ngā whakatau – ka haere tahi ko ngā take me ngā kōrero kei muri o ngā whakatau. Ka rite tonu te whakairi kōrero ki te Pukamata. Kua kaha ake te mōhio a ō mātou hoa arapāho ki ā mātou mahi, ina koa i ngā pānui pāpāho 19 i tukua i te 2022/23 ki te reo Māori me te reo Ingarihi. Whānui ana te whakaputa tahi i ēnei. Ka rite tonu te tukutuku a te kaihaurapa kōrero i ngā pānui nei mō te wā katoa e ora ana te tono ingoa wāhi.

Hei tauira, i whānui te kōrerohia o te tono kia panonitia a Clive River ki Te Awa-o-Mokotūāraro e te nūpepa o te haukāinga, e *Hawke's Bay Today*. E tangi ana hoki ki te matenga o te kaitono o Arconnehi (Aki) Paipper i te tīmatanga o Hōngongoi 2023.

He wahine kaha i ngana tonu kia hono ki te ingoa Māori taketake o te awa kia noho hauora anō kia noho ora anō.

Kua urupare mātou ki te tini pātai a ngā kaihaurapa kōrero tae atu ki te uia i te irirangi me te Pouaka Whakaata me te whai wāhi atu ki te terenga ipāho a Te Irirangi o Aotearoa a 'Nau Mai Town'. Kua whai painga katoa ēnei ki te whakatairanga i ā mātou mahi me te whakamōhio tonu i a Aotearoa mō ngā tono me ngā whakatau.

Ko ngā arapāho tonu kei te whakaporipori i te whakamahia o te ingoa wāhi Māori i ngā rongo o te wā me ngā kōrero huarere, me te aha, kua kaha ake te whakaaehia o ngā ingoa wāhi Māori me te āhua o te whakahua.

19

**ngā pānui pāpāho i tukua i te 2022/23
ki te reo Māori me te reo Ingarihi**

Whakatutukinga me ngā mahi i tutuki

Whakataunga

Tono ingoa wāhi

E aro nui ana ā mātou mahi ki te taunahatanga hou ki te panoni ingoa wāhi kua takoto kē mai rānei hei uruparenga ki ngā tono a te iwi tūmatanui, a ngāi Māori, a te whakahaere, te kaunihera me ngā umanga kāwanatanga.

I tērā tau i whakahoungia e mātou tā mātou puka² tuihono mō te tono ingoa wāhi. Ora ana te ngākau i te tahuri a ētahi kaitono ki te whakamahi i te taputapu tuihono, engari e paingia tonuhia ana e tōna haurua nei te kōwhiringa kape mārō me te tāpae mai ki te imērā ka pōhi mai rānei.

I te 2022/23 ka pānui tūmatanuihia e mātou ētahi tono ingoa wāhi 19 me te kimi whakaaro anō e tautoko ana e whakahē ana rānei:

- Drury Railway Station, taha tonga o Tāmaki Makaurau
- Ngākōroa Railway Station, taha tonga o Tāmaki Makaurau
- Paerātā Railway Station, taha tonga o Tāmaki Makaurau
- Karanga-a-Hape Railway Station, puku o Tāmaki Makaurau
- Maungawhau / Mount Eden Railway Station, puku o Tāmaki Makaurau (ko te ingoa whakamutunga ko Maungawhau Railway Station)
- Te Waihorotiu Railway Station, puku o Tāmaki Makaurau
- Waitematā Railway Station, puku o Tāmaki Makaurau
- Ryan Creek, Pae Maunga o Remutaka
- Stewart Crag, Haast River (ko te ingoa whakamutunga ko Kea Crag)
- Stewart Creek, Haast Pass/Tioripatea
- Kororāreka, mai i te Russell (kāore he whakatau whakamutunga i te 2022/23)
- Ngāmoko Stream, Coromandel Peninsula
- Te Awa o Mokotūāraro, mai i te Clive River
- Te Kamo, tētahi paenoho i Whangārei (kāore he whakatau whakamutunga i te 2022/23)
- Herwin Creek, Richmond Range
- Pūāwhē, Pirongia Mountain (kāore he whakatau whakamutunga i te 2022/23)
- Rangiriri, tētahi wāhi kei te raki o Huntly (kāore he whakatau whakamutunga i te 2022/23)
- Whangamarino, tētahi wāhi kei te raki o Huntly (kāore he whakatau whakamutunga i te 2022/23)
- Te Kakau Bank, tētahi tārainga takere moana kei waho atu i te tahtika tonga-mā-rāwhiti o Te Ika-a-Māui (kāore he whakatau whakamutunga i te 2022/23).

2. https://landinformationnz.aul.qualtrics.com/jfe/form/SV_cNKctPDqiCNUtpY

Whakapāpātanga mō te ingoa wāhi

I whakamahia e mātou ngā hongere e whai ake nei ki te whakamōhio i te tangata mō te tono ingoa wāhi me te kimi tāpaenga whakaaro i a rātou:

- pānuitia ki te New Zealand Gazette
- pānui pāpāho ki te reo Ingarihi me te reo Māori
- pānui tūmatanui ki ngā nūpepa o te motu me te haukāinga
- tuhinga ki ngā whārangi ipurangi a Toitū Te Whenua mō te 'Consultation' me te 'News'
- tuhinga ki te whārangi Pukamata a Toitū Te Whenua
- tuhinga ki te whārangi ipurangi a te kāwanatanga mō te 'Consultation'
- kupu ārahi ki te mana whenua
- kupu ārahi ki ngā MP e tika ana
- kupu ārahi ki ngā kaunihera e tika ana
- kupu ārahi ki tētahi rārangi tuari tae atu ki te hunga whai wāhi, te umanga me ngā kaihangā mahere.

Tono me ngā whakatau kūrururu

I te 2022/23 ka whāia haerehia e mātou ētahi ingoa teihana rerewē e whitu i Tāmaki Makaurau, e whā mō City Rail Link i whanaketia i te puku o te takiwā pakihi, e toru i te whanakaetanga hou o te ara rerewēi waenga o Papakura me Pukekohe hei āwhina i ngā wero ikiiki ki te taone nui. I tāpaea mai ngā tono e KiwiRail, e Auckland Transport me City Rail Link. Ka takohatia ētahi ingoa reo Māori e ētahi rōpū mana whenua kē e rua. E mihi ana ki ngā hononga hiranga i waenga i ngā kaitono me te iwi. Heoi anō, kāore mātou i whakaae ki tētahi o ngā ingoa e toru mō te teihana rerewē i te taha tonga o Tāmakau Makaurau me te kore e whakamahia o ngā tikanga tuhi arowhānui i whakahēngia e ētahi iwi:

- Ka hoatu e mātou ko te ingoa teihana rerewē e hāngai ana ki te wāhi e ū atu ai, pērā i a Drury – kua a 'Maketū' e pā kē nei ki te manga me te pā o mua kei tōna 5km ki te tonga-mā-rāwhiti o te teihana hou e whakaarotia ana.
- Ka whakatau mātou kia ū tonu ki ngā tikanga tuhi arowhānui a Te Taura Whiri i te Reo Māori mō te āhua ki te tohutō, kua ki te oropuare rua. Nō muri tēnei i tētahi hui ki ngā kaitono i puta ai te whakaaro taikaha i ngā taha e rua ki te kaupapa nei.

Tāpaenga whakaaro kaioraora

Ko ētahi tāpaenga whakaaro whakahē e rua mō te tono kia Kororāreka a Russell i kaioraora, i whakatumatuma ngā kōrero o roto. Whakarerea ana ēnei tāpaenga, kāore i whakaarohia e te Poari. Ko te putanga o tēnei ko tā mātou whakatinana i ētahi tikanga tātari ki te tautuhi me te whakarere i te kōrero kaioraora, ka mutu, ka whakamōhio mātou i ngā kaitono i ngā puka tāpae whakaaro tuihono ki te tukua mai e rātou tēnei momo whakahē kāore e pānuihia e whakaarotia.

Whakaaetanga kia mana te ingoa wāhi kua takoto

E 28,120 katoa e 51% rānei (tirohia te Ripanga 3 kei te whārangi 22) o ngā ingoa kei te *New Zealand Gazetteer* he ingoa kua takoto kīhai i mana. Ka taea ēnei te whakamana mā roto i tētahi tukanga whakatau wawe kua takoto mai ki tō mātou ture ka whakakore i te whakapā tūmatanui haere mehemea:

- kāore i takoto mai tētahi atu ingoa mō te tārainga te wāhi rānei
- e kore tonu pea e whakahēngia e te iwi tūmatanui
- e whakapono ana mātou arā ētahi tuhinga mana e rua neke atu e wātea tūmatanui ana kei reira te ingoa wāhi e takoto mai ana.

I tīmata tētahi hōtaka e whakaaetia ai kia mana i te Whiringa-ā-nuku 2020 kua whakaritea kia oti hei te 2026. E whāia haerehia ana tēnei ā-rohe. Ahakoa te kore e whakapā haere ki te iwi tūmatanui, ka toro hāngai tonu mātou ki ngā kaunihera me te mana whenua.

I te 2022/23 ka whakaaetia e mātou ētahi ingoa kua takoto 156 kia mana – ko tētahi 148 he ingoa i toe mai i te Rohe ki Tūranga-nui-a-Kiwa, ko ētahi e waru i whāia haerehia nō ētahi atu rohe.

I tā mātou whaiwhai haere i ngā ingoa wāhi o te Kaunihera o Tāmaki me te Takiwā ki Te Matau-a-Māui kāore i tino urupare mai ētahi iwi, nā runga tonu i te nui o ngā mahi hei mahi ahakoa te whakaroahia o te wā.

Ka whakatau mātou kāore i take tōmua te whakamana i te ingoa Tauwiwi kua takoto kē mai, engari e hiranga ana ngā ingoa wāhi Māori kua takoto mai i te mea kua whakaūngia e te tukanga te tuhinga tika, kua hoatu kē he tohutō ki ngā wāhi tika.

I te Pipiri 2023 ka whakaae mātou kia whakarerekētia te hōtaka kia heke ai te rahi o ngā ingoa hei whaiwhai haere mā te iwi. Kua aro mātou ināianei ki te whaiwhai ake i ngā ingoa wāhi Māori kua takoto mai, ka hoatu tohutō ai ki ngā wāhi tika, ki te hiahiatia kia whakaroahia ake te wā ki te mana whenua ki te urupare mai. Pērā i mua, ko ngā ingoa Māori kua takoto ka whakatutuki i ngā paearu anahe ka whakamanahia.

Hei wāhanga o te hōtaka, ka arotakea e mātou te ingoa wāhi Māori he pānga ōna ki te ingoa kātahi tonu ka whakaaehia kia rite tūturu ai te āhua o te tuhi.



Whakaahua 2. Kaweka Range, Mount Ruapehu, Mount Ngauruhoe. Whakamihi: Christopher Stephens, i whakaahuatua i te 16 o Paengawhāwhā 2022.

Ingoa wāhi rauhi Karauna

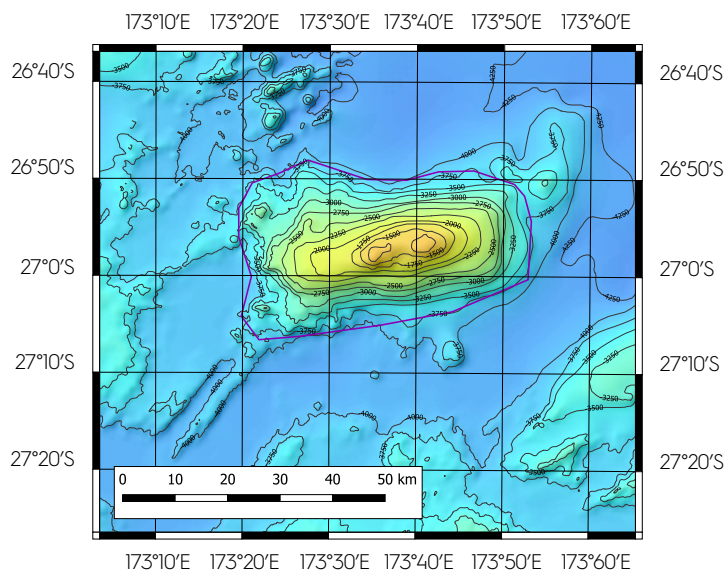
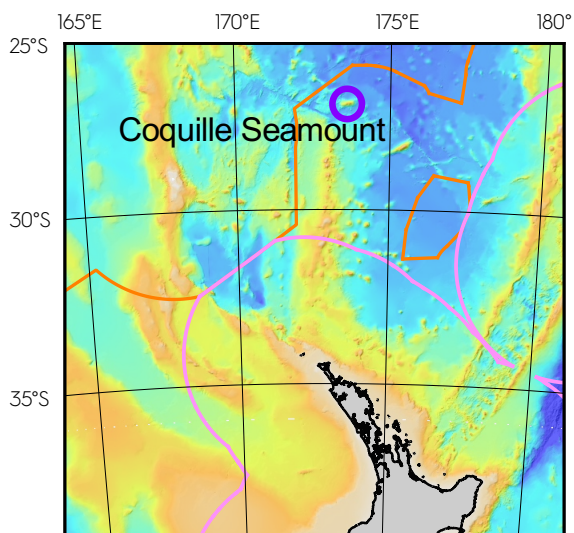
Ko te wāhi ki a mātou ki te taunaha wāhi rauhi Karauna ko te arotake i ngā tono ka tae ake i Te Papa Atawhai (DOC) ki tā mātou Paerewa mō te ingoa wāhi rauhi a te Karauna. Ki te tutuki te Paerewa, kua whakaae tahi mātou ki te tono. Kua pai te whakarōpū me te taunaha a DOC i te wāhi rauhi i raro i tōna ake ture. Ki te kore mātou e whakaae kua tuku kōrero mātou ki te Minita o Te Papa Atawhai mō te whakatau whakamutunga.

I tēnei tau i whakaae tahi mātou ki ētahi tono ingoa wāhi rauhi Karauna e rua:

- Te Kuihi Scenic Reserve, pātata ki Dargaville
- Pati Tapu Bush Scenic Reserve, Alfredton, Wairarapa.

I te Poutūterangi 2023, ka tāpae whakaaro mātou ki ngā kupu ārahi a Te Papa Atawhai mā āna kaimahi ka whaiwhai haere i ngā ingoa wāhi rauhi Karauna.

I te Hōngongoi 2022 ka tūtohu mātou kia hoatu tohutō a DOC ki ngā ingoa wāhi rauhi Karauna mā roto i te puka whakatikatika, kia rite ai ki ētahi atu ingoa wāhi whai pānga kua oti te whakahou hei tā ngā tikanga tuhi tika. I tēnei tau, i runga i te whakaaetanga a DOC, kua hoatu he tohutō ki ētahi ingoa rauhi Karauna e toru.



Āhua 1 me te 2 o ngā mahere i whakaritea e tō mātou Tokomatua mō te tono i te Coquille Seamount, i kawea ake kia mana e mātou i te Haratua 2022 hei tāpae ki a SCUFN.

Te taunaha tārainga takere moana

Nā tā mātou Komiti Ingoa Tārainga Takere Moana i āhei ai mātou ki te taunaha tārainga takere moana e mauroa ai, e pakari ai tā mātou i whakatau ai. Mā te āta whakamārama me te taunaha tārainga takere moana kei ngā pūkawa raurarahi o Aotearoa me te Ross Dependency o Te Tiri o te Moana ki te Tonga, kei te hoatu horopaki mātou ki te hapori o te ao mō te hōpara haere, te rangahau pūtaiao, ohaoha, me te kimi rauemi māori. He whakamaharatanga hira anō te ingoa tārainga takere moana ki tō tātou hitori, ahurea, tuakiri.

I ia tau ka tukua e mātou ētahi ingoa takere moana kua hou te whai mana o waho atu i te 12 maero ā-tai ki te Komiti Whāiti mō te Ingoa Tārainga Takere Moana (SCUFN), tētahi rōpū mātanga o te ao mō te pūtaiao moana me ngā mahi whakatātūtū ka kōwhiri ingoa hei whakamahi ki ngā hautaonga whakatātūtū, ine hōhonu o te ao pērā i te tūtohi me te mahere.

Mā konei e tūturu ai te tiakina, te mōhiotia me te whakamahia o te ingoa o Aotearoa kei te takere moana. Mohoa nei, kua whakaaetia e SCUFN ētahi ingoa takere moana mana o Aotearoa e 395 o roto i te 434 (91%).

Taunahatanga i Te Tiri o te Moana ki te Tonga

Kāore i tae mai he tono ingoa wāhi hou mō Te Tiri o te Moana ki te Tonga i tēnei tau.

I tēnei wā e 4,346 ngā ingoa wāhi o Te Tiri o te Moana ki te Tonga kei te *New Zealand Gazetteer*.

I mahi tahi mātou ki Te Manatū Aorere i runga i te noho mema a tā mātou Hēkeretari ki te Rōpū Ruruku Āpiha o Te Tiri o te Moana ki te Tonga, e rua nei ā rātou hui i tēnei tau.



Whakaahua 3. Awa o Tauwharenīkau, kua mana i raro i te Ture Whakatau Kerēme a Ngāti Kahungunu ki Wairarapa Tāmaki nui-a-Rua 2022. Whakamihi: Christopher Stephens, i whakaahuatia i te 21 o Hereturikōkā 2022.

Te whakahoki i te ingoa wāhi Māori ake i raro i te whakataunga Tiriti o Waitangi

He rite tonu te whakahokia ake o te ingoa wāhi Māori taketake hei wāhanga o te puretumu whakataunga Tiriti. He maha ngā ingoa wāhi tangata whenua i whakakapingia i ngaro rānei i te tāmitanga. He taonga aua ingoa wāhi ki a ngāi Māori, he hokinga mahara ki te tupuna ki te kōrero tuku iho rānei.

Ka tuku kupu ārahi mātou ki Te Arawhiti mō te tono ingoa wāhi kei te whakataunga Tiriti.

Kei te Minita mō ngā Kōwhiringa Tiriti o Waitangi me te Rūnanga Matua ngā whakatau whakamutunga mō ngā puretumu whakataunga Tiriti katoa. Ka kāhetitia e mātou ngā ingoa wāhi kua whakaaetia

kia mana, ka whakauru ai ki te *New Zealand Gazetteer* kia kitea tūmatanuihia ai i te taha o ngā kōrero me te tikanga o te ingoa, ka whakahau anō kia whakamahia ki te mahere whenua mana, te paetukutuku, ki ētahi atu tuhinga anō.

I te 2022/23, e 42 ngā ingoa wāhi i whakahokia ake kia mana i raro i ngā whakataunga Tiriti e toru. I pānuitia tētahi atu ingoa wāhi Māori ki te *New Zealand Gazetteer* hei ingoa Māori taketake i kohia mā roto i ngā whakataunga Tiriti.

I tēnei tau ka tae ake ētahi tono ingoa wāhi Tiriti e 30, nō tētahi rōpū kerēme kotahi. E tāria atu ana ētahi atu tono mai i ētahi rōpū kerēme ka whakaarohia hei te 2023/2024.

Te pūrongo i ngā kawenga i raro i te Tiriti o Waitangi

I whakaurua atu e mātou ngā kōrero tūnga hou mō ā mātou kawenga Tiriti e 216 katoa kei te tomokanga tuihono whakatau o Te Haeata a Te Arawhiti i mua i te 30 o Pipiri 2023. I whakahaerehia ngā mahi nei hei

tā te anga o He Korowai Whakamana e whakamāramahia ana i te Pepa Rūnanga o *Enhancing oversight of Treaty settlement commitments* i whakaaetia e te Rūnanga i te 16 o Hakihea 2022. He hōtaka hira tēnei e āta arotakea ai ā mātou kawenga Tiriti katoa e tino tika ai e tukupū ai ā mātou pūrongo.

Ripanga 1. Kawenga Tiriti a te Poari kei Te Haeata i te 30 o Pipiri 2023:

Tūnga koke i Te Haeata	Maha o ngā kawenga	Ōrau
Kāore anō i timata	41	19%
Kua oti	154	71%
E pai ana e paku raru ana rānei	21	10%
Tapeke	216	100%



Whakaahua 4. Taranaki Maunga. Whakamihi: Joanna Barnes-Wylie, i whakaahuatia i te 31 o Poutūterangi 2023.

Waitohu i te whakaaetanga ruruku mō Taranaki Maunga

I te 31 o Poutūterangi 2023, ka tae mātou ki tētahi huihuinga i Aotearoa Marae i Okaiawa ki te waitohu i Te Ruruku Pūtakerongo, te puretumu tōpū i whakaaetia mō Taranaki Maunga.

Ko te Kaitohutohu Matua (Ingoa Tiriti) o tō mātou Tokomatua ko Joanna Barnes-Wylie i haere hei kanohi mō mātou me tana tāpae i ētahi mahere whai taitapa e rua e whakaatu ana i ngā ingoa wāhi kei Te Ruruku Pūtakerongo, te whakaaetanga puretumu tōpū mō Taranaki Maunga. I mauria atu e Joanna rāua ko Ginny Maddock (Leggett i mua) mema o te Tokomatua o mua ngā mahere ki roto i te wharenui i te wā o te pōwhiri.

Ka whakanōhia ngā mahere ki te taha o ētahi whakaahua i mua o te atamira. He āhuatanga matua te whakahoki ake i te ingoa wāhi Māori taketake o te Whakaaetanga Puretumu Tōpū, he mea nui whakaharahara hoki ki Ngā Iwi o Taranaki kia kite i te āpitihia o ō rātou ingoa wāhi ki tētahi mahere matawhenua.

Tohua ana e te huihuinga tētahi tūāmahi nunui i te hītori o ā mātou mahi taunaha, i te uhia e te puretumu tōpū ki te papa rāhui o te motu – tae atu ki Taranaki Maunga me ngā tūpuna maunga huri noa – te mana tangata ā-ture, e noho ai ko tētahi hinonga hoa-mana ārahi, Te Tōpuni Kōkōrangī, hei waha mōna.

E tohu ana i te wā tuatahi e taunahatia ai tētahi papa rāhui o te motu o Aotearoa ki te ingoa Māori kotahi – Te Papa-Kura-o-Taranaki. Kia puta rawa te ture whakatau kua mana ngā ingoa kua whakahokia nei.



Whakaahua 5. Te Awa o Mokotūāraro, Whakamihi: Christopher Stephens, i whakaahuatia i te 1 o Kohitātea 2019.

E hia ngā whakataunga ingoa wāhi i kāhetitia?

Ka pānuihia ngā whakataua whakamutunga katoa mō te ingoa wāhi ki te *New Zealand Gazette*.

I te 2022/23 ka pānuihia e mātou ētahi whakataunga ingoa wāhi whakamutunga e 265 ki te *New Zealand Gazette* (tirohia ngā Ripanga 2 me te 3, me te Kauwhata 1 i raro nei).

Whakataunga a te Minita mō Toitū Te Whenua

I te 2022/23 nā te Minita ngā whakataua whakamutunga mō ētahi ingoa wāhi 10:

- Maungatūtū, he maunga i takea mai i te puia kei waenga o Ohauti me Oropi (wāhi), ki te tonga o Tauranga
- Lake Te Horonui, he roto i ahuahua e te horo i te Huitanguru 2018, kei te tuawhenua i waenga o te Takiwā ki Tūranga-nui-a-Kiwa me te Takiwā ki te Wairoa. Kāore i taea e mātou te whakataua mēnā ko Lake Te Horonui, ko Lake Mangapōike rānei i ngā

uruparenga taupatu a te mana whenua. Ka whakataua te Minister ko Lake Te Horonui.

- Ētahi teihana rere e whā i te puku o Tāmaki Makaurau rere i te City Rail Link hou, e whakaata nei ngā ingoa i ngā tārainga matawhenua o te haukāinga:
 - Waitematā Railway Station
 - Te Waihorotiu Railway Station
 - Karanga-a-Hape Railway Station
 - Maungawhau Railway Station
- Ētahi teihana rere e toru kei te Ara Matua o Te Ika-ā-Māui i waenga o Pukekohe me Papakura, e whakaata ana ngā ingoa i te ūnga atu i tētahi tārainga matawhenua rānei o te haukāinga:
 - Paerātā Railway Station
 - Ngākōroa Railway Station
 - Drury Railway Station
- Te Awa o Mokotūāraro, i panonitia mai i te Clive River.

Whakataua a te Toihau i raro i te mana tuku

I raro i te mana tuku e rima ngā whakataua ingoa wāhi whakamutunga a te Toihau, i tā mātou whakapā tūmatanui haere kāore he tāpaenga whakahē i take ake.

- Skerretts Creek, he manga pātata ki Wainuiomata, Lower Hutt – tirohia te Āhua 3 i te taha tauaro.
- Ryan Creek, he manga kei te kohi wai o te Ōrongorongo River.
- Stewart Creek, he manga pātata ki Haast Pass/Tioripatea.
- Kea Crag, he pari poupu kei runga ake i te Haast River ki te raki o Haast Pass/Tioripatea.
- Ngāmoko Stream, he manga iti kei Little Bay ki te raki o Coromandel.

Kua takoto tēnei ki te *New Zealand Gazetteer* i te āpure Hītori/Pūtakenga/Tikanga mō Skerretts Creek: 'Named for Sir Charles Perrin Skerrett (1863–1929). Skerrett was a high profile lawyer, who in later life served as King's Counsel and briefly Chief Justice of New Zealand (1927–1929). In the 1880s-1890s Skerrett regularly fished for trout from a hut (known as Smith's Whare, for Dyer Smith) near the creek's confluence with Wainuiomata River.'



Āhua 3 o Mr Skerrett, New Zealand Graphic whārangi 528, e ingoatia ana ko 'Trout-fishing at Wainui-O-Mata, Wellington', i whakaputaina i te 1891, Whakamihi: Auckland Libraries Heritage Collections NZG-18911031-0528-04.

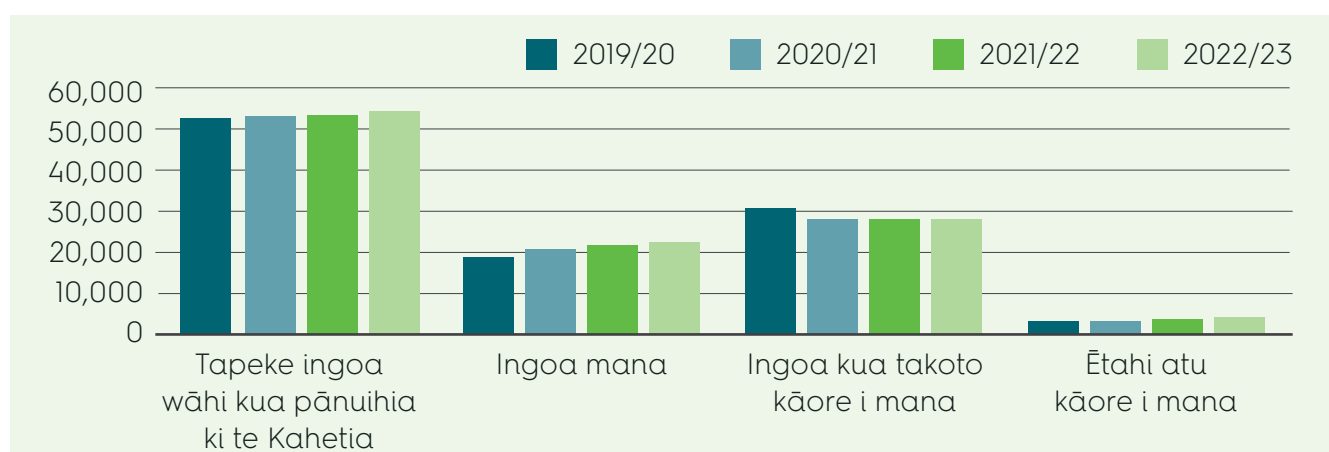
Ripanga 2. Ingoa wāhi (kei waho ngā tono) i pānuitia i te 2022/23 ki te New Zealand Gazette.

Whakatau ingoa wāhi a te Minita	13
Whakatau ingoa wāhi whakamutunga a te Poari	5
Arotake me te tautoko i te ingoa wāhi rauhi Karauna (i pānuihia e DOC)	1
Ingoa Wāhi Rauhi Karauna kua takoto i whakaungia i whakatikaina (i pānuihia e te Poari)	12
Ingoa wāhi kua takoto i whakaaetia kia mana	156
Ingoa wāhi whakataunga Tiriti (tae atu ki ngā ingoa Wāhi Rauhi Karauna i unuhia)	63
Ingoa takere moana i whakarerekētia	3
Ētahi atu whakahounga/whakatikatika (tae atu ki te hoatu tohutō kia arowhānui ai ētahi ingoa mana kua takoto)	12
Tapeke	265

Ripanga 3. Ingoa wāhi mana kāore rānei i mana kei te New Zealand Gazetteer.

	2019/20		2020/21		2021/22		2022/23	
Ingoa mana	18,800	36%	21,000	39%	22,050	41%	22,240	41%
Ingoa kua takoto kīhai i mana	30,850	58%	28,300	55%	28,300	53%	28,120	51%
Ingoa kīhai i mana (i whakakapingia, i unuhia, i kohia, ngā ingoa Māori ake, ngā ingoa Moriori ake)	3,200	6%	3,250	6%	3,350	6%	4,210	8%
Tapeke ingoa wāhi kei te New Zealand Gazetteer	52,850		53,550		53,700		54,570	

Kauwhata 1. Ahunga o te ingoa wāhi mana kāore rānei i mana.





Āhua 4. Tohanga o ngā ingoa wāhi e 265 i kāhetitia i te 2022/23 (kei waho ngā tono) i Aotearoa³. Kāore i kāhetitia he ingoa i te rohe ki te Ross Sea i Te Tiri o te Moana ki te Tonga.

3. Puna: Maharepū Āhua ā-Manu a Toitū Te Whenua, kei roto hoki ngā raraunga a Toitū Te Whenua kua raihanatia mō te whakamahi anō i raro i te Creative Commons Attribution 4.0 International licence], *New Zealand Gazetteer*

E hia katoa ngā whakataunga mō te ingoa wāhi?

I te 2022/23 e 3,118 ā mātou whakataua mō te ingoa wāhi, kia mōhio hoki kāore te katoa i kāhetitia (tirohia te Ripanga 4 i raro nei).

Ripanga 4. Ingoa wāhi i whakaarotia i ngā hui a te Poari i tū i te 2022/23.

Wāhi rauhi Karauna	1
Whakatikaina, whakahoungia	156
Whakakāhoretia	42
Whakairia (ko te nuinga he ingoa kua takoto mā te Kaunihera o Tāmaki Makaurau me te Rohe o Te Matau-a-Māui)	2,677
E mōhiohia ana	15
Whakataua whakamutunga a te Poari	4
Tonoa (kia whakapā tūmatanuitia)	20
Whakaaetia	156
Takere Moana	3
Pūrongohia ki te Minita mō Toitū Te Whenua	12
Te Tiriti	30
Whakahoungia ki te <i>New Zealand Gazetteer</i>	2
Tapeke	3,118

Kaupapahere, paerewa, aratohu me te ture

Ko tētahi o ā mātou whāinga rautaki ko te whai kia pakari ngā kaupapahere me ngā aratohu kia rite ana mō ngā mahi.

Kanorau me te kauawhi i te ingoa wāhi

I te Hōngongoi 2022 ka whakaarotia e mātou tētahi pepa matapaki mō ngā āhuatanga e hāngai ana ki te kanorau me te kauawhi i te tuku tuakiritanga, te mōhioranga, ki te hoatu reo anō ki ngā rōpū, ngā iwi me ngā ahurea kua whakaparahakotia heke iho i ngā tau (tae atu ki ngā reo o te tokoiti) i ngā mahi taunaha wāhi. Ka whakaae mātou ki te āpiti i tētahi paearu kupu whānui ki ā mātou paerewa taunaha e rima kua whakaputaina ka whai painga ki tētahi porihanga noho tautika, kanorau, kauawhi.

Hiahia Mōkito Katoa mō ngā tono

I whakahoungia e mātou o mātou Hiahia Mōkito Katoa mō ngā tono i te Hōngongoi 2022 kia noho mārama ake ai. I whakawhitihia hoki ngā tuhinga e rua ki te reo Māori. Tirohia te <https://www.linz.govt.nz/resources/guide/minimum-requirements-geographic-name-proposals>.

Pire Whakahou Ture

I mahi tahi mātou ki te tīma Kaupapahere i Toitū Te Whenua ki te kimi panonitanga iti ki tō mātou ture.

Kupu Ārahi ki te Komiti Whiriwhiri

I te tīmatanga o te 2023 ka tāpaea he whakaaro ā-tuhi, ā-waha anō ki te Komiti Whiriwhiri Māori mō te petihana a Te Pāti Māori kia panonihia te ingoa o te motu ka whakataki ai i mua i te 2026 tētahi tukanga ki te whakahoki ake ki te panoni rānei i ngā ingoa wāhi katoa kia reo Māori. Ka tukua e mātou he kupu ārahi mō ngā tukanga me ngā whakataunga a te Poari, e aro nui ana ki te whakapā tūmatanui, ki te iwi me te kaunihera.

Arotakenga ā-Ture

I mukua atu tētahi kōrero kerēme ki te Kōti Tiketike e kimi ana i tētahi arotakenga ā-ture e pā ana ki ngā tono ingoa wāhi i te Motu o Waiheke i te whakawākanga a te Kōti Tiketike i te Huitanguru 2023.



ata waitohu Poari

Torotoronga

Kei te koke pai mātou ki ā mātou whāinga rautaki mō te toronga me te whakawhanaunga mā te:

- tāmata i ā mātou whārangi ipurangi i te paetukutuku a Toitū Te Whenua, i tukua i te Mahuru 2022
- whakahou i ā mātou huarawa taurangi i tā mātou waitohu me tā mātou moko hou (pērā i ngā waitohu imēra me ngā tauira Pūmanawa Tāpae Kōrero)
- torotoro ki ngā tūrama arotahi arapāho, pērā i ngā ipāho ingoa matawhenua a Te Irirangi o Aotearoa
- whanake mahere torotoro me tētahi mahere hunga whai pānga.

Waitohu hou

I whakarewaina tā mātou waitohu me tā mātou moko hou i te Mahuru 2022.

I hangaia te ata kia mau ai te iho o tā te Poari i mahi ai i tana noho hei mana mō ngā ingoa wāhi o Aotearoa. E whakakotahi ana i tētahi tohu wāhi, te tohukī me te koru, te tohu o te tīmatanga hou, te tupu me te whakaaro tahi, tētahi koru pūrua, te tōrino rānei, te tohu o te tupu tahi, me te Hei Matau – te matau a Māui, te tohu o te huhuatanga, te kaha me te hiringa. I te whakakotahitia kua puta ko tētahi mahere whaihanganga o Aotearoa.

Rau tau 2024

I te Poutūterangi 2023 ka whanaketia e mātou tētahi mahere mahi mō ā mātou kaupapa rau tau ā te 2024, e kapi ai ētahi momo tūmahi whānui e hono ana hei mahi whakanui, hei whakamaharatanga. I hoahoatia ngā tūmahi ki te:

- whakanui i te ahurea ahurei o Aotearoa me tōna tuakiri motuhake mā roto i ngā ingoa matawhenua
- whakanui i te hiranga o te ingoa matawhenua, pērā i te hītori, te pūtakenga me te tikanga ki ngā iwi o Aotearoa
- whakaoho me te whakamōhio i te āhua o ngā mahi me ngā rauemi a te Poari
- whakanui i te 100 tau o te whai mana ki te taunaha matawhenua
- whakamihi i ngā hoa kōtui o te Poari, i te hunga whai pānga me ōna mema Poari o mua.

Hononga

Minita

Minita mō Toitū Te Whenua:

- māna te whakatau whakamutunga mō te tono ingoa wāhi ki te kore te Poari e tautoko i ngā whakahē
- ko ia te māngai arapāho mō ngā whakataunga ingoa wāhi ka tautohea
- ka tukua atu te pūrongo ā-tau a te Poari ki a ia hei tāpae māna ki te Pāremata
- ka tukua atu e te Poari he kupu ārahi ki a ia mō ngā take e pā ana ki te ingoa wāhi
- ka tūtohi kia whakahoungia e te Kāwana-Tianara te ingoa o tētahi kaunihera kia mana ai te whakahounga ina panonitia te ingoa o tētahi kaunihera ā-takiwā, ā-rohe rānei
- māna e kopou ētahi mema tokowaru o te tekau mema ki te Poari.

Minita Whakahaere Whakaritenga Tiriti o Waitangi:

Ka whakatau i ngā ingoa wāhi mana me ngā ingoa wāhi rauhi Karauna ka whakariteritea hei wāhanga o te puretumu ahurea o ngā whakaritenga whakataunga Tiriti i waenga i te Karauna me ngā kaikerēme. Ka mana ngā whakatau whakamutunga i raro i tā tēnā me tēnā ture whakataunga Tiriti.

Minita mō Te Papa Atawhai:

Ka whakatau i ingoa whenua rauhi Karauna kua arotakea e mātou i raro i tō mātou Ture, engari kāore mātou e tautoko, i te kore e rite ki ngā paearu kei tā mātou *Paerewa mō ngā ingoa wāhi rauhi Karauna*.

Mana whenua

He mahi ā mātou kei tō mātou ture ki te kohi me te whakahau kia whakamahia te ingoa wāhi Māori taketake ake me te whakatinana i ngā tikanga tuhi (pērā i te tuhi tika, te tohutō, te tohuhono, te kupu hiato rānei). Kei te whakakaha ake mātou i ā mātou toronga ki te mana whenua ki te whakatutuki i ēnei mahi, ēnei here. E mōhio ana mātou mō te Rautaki a te Karauna ki te Whakarauora i te Reo Māori 2018–2023 i tana *Maihi Karauna*. E kauawhi ana mātou ki te anga torotoro me ngā aratohu a Te Arawhiti. E mōhio ana mātou ki ngā mātāpono o te Tiriti o Waitangi mō te mahi kōtui, te whai wāhi atu me te tiakitanga, ka āta whakamanahia ki ā mātou tukanga pērā i ā mātou:

- *Kaupapa*⁴ mō te Ingoa Wāhi Māori
- aratohu mō te whakapā haere ki a ngāi Māori
- tikanga hononga ki Te Arawhiti
- aratohu mō te kohi ingoa wāhi Māori taketake ake
- whakaaetanga Mahi Tahī ki Te Taura Whiri i te Reo Māori
- tikanga hononga ki Te Puni Kōkiri
- aratohu mō ngā tono ingoa Tiriti
- Whakaaetanga Awa a te Minita Pārongo Whenua mō te whakatutuki kawenga o muri i te whakataunga mā Waikato-Tainui, Te Arawa River Iwi Trust, te Raukawa Settlement Trust me te Maniapoto Māori Trust Board
- kaupapahere kupu whānui
- kaupapahere ingoa Māori o tēnei wā.

He maha ā mātou toronga ki a ngāi Māori puta noa i te 2022/23 mō te hōtaka whakaaetanga me tā mātou whaiwhai haere i ngā paerewa tono. I hui atu anō mātou ki Te Rūnanga o Ngāi Tahu i te Poutūterangi 2023 mō tā mātou hui whakawhanaunga ā-tau.

I te 2022/23 katoa ā mātou pānui pāpāho 19 i reorua.

4. Ko te kaupapahere te tikanga o te 'Kaupapa' i konei.

Kāwanatanga Matua

I āta mahi tahi tonu mātou ki ngā umanga nei:

- Toitū Te Whenua mō te mahere, te tūtohi, te paetukutuku, te ratonga raraunga me ērā atu o ana hautaonga – he whāinga rautaki tā mātou ki te mahi tata ki a Toitū Te Whenua ki te whakatutuki i ā mātou whāinga
- Te Arawhiti – mō ngā ingoa wāhi i raro i te Tiriti o Waitangi
- Te Taura Whiri i te Reo Māori – mō te tikanga tuhi tika i te ingoa wāhi Māori. I waitohua e mātou i te Pipiri tētahi whakaaetanga Mahi Tahi hou mō te āhua o tā mātou mahi tahi me ngā ara ka whāia e whai painga tahi ai mātou. Māha ana te ngākau i te whakaūnga o te haere pūmau tonu o tēnei.
- Te Puni Kōkiri – mō te totoro ki te mana whenua
- Te Papa Atawhai mō ngā ingoa wāhi rauhi Karauna
- NIWA Taihoro Nukurangi mō te ingoa tārainga takere moana
- GNS Science Te Pū Ao mō te ingoa tārainga takere moana
- Antarctica New Zealand mō ngā ingoa wāhi i Te Tiri o te Moana ki te Tonga
- Manatū Aorere mō te noho takawaenga ki te ao, tae atu ki Te Tiri o te Moana ki te Tonga me Te Taihuka a Pia
- Te Tāhuhu o te Mātauranga mō te marautanga hitori hou o Aotearoa

- Waka Kotahi. I te Pipiri 2023, ka whakapā haere a Waka Kotahi ki te iwi tūmatanui mō tana kohinga tohu haere huarahi reorua e 94, i uru atu nei te tohu ingoa wāhi. Ka kī atu mātou me āta whakamahi te ingoa wāhi mana, mehemea he ingoa kīhai i mana me āta whakamahi ko te ingoa wāhi Māori tika, me ngā tikanga tuhi arowhānui.

Kāwanatanga ā-rohe

Kua whakaratoa e tō mātou mema Kāwanatanga ā-Rohe o Aotearoa, e Bonita Bigham tētahi hononga whai uara ki ngā mahi a ngā kaunihera mō te āhua ki te ingoa wāhi. Ka noho hiranga tonu ki te tukanga taunaha te totoro tonu ki ngā kaunihera.

I te Pipiri 2022, ka tuku whakaaro mātou ki te Kaunihera ā-Rohe o Heretaunga e kimi nei me pēhea te whakahoki ōkawa atu i ōna ingoa wāhi Māori. Kua poua atu e te kaunihera ētahi tohu huarahi reorua, hei tauira te Hastings Heretaunga.

Pātai

I te 2022/23 i whakautua e mātou ētahi pātai 159 neke atu mō te ingoa wāhi. I whakautua anō e mātou ētahi tono ruarua nei i raro i te Tūre Pārongo Ōkawa, ki te tuhinga Minita me ētahi pātai pāremata (ā-tuhi, ā-waha anō).

159

ngā whakahokinga ki ngā uiuinga ingoa wāhi
i te 2022/23

Hui Taumata

I te Hereturikōkā 2022, ka tae mātou ki te Hui Taumata Rangahau Mokowā Whenua i Te Whanga-nui-a-Tara.

I te Hereturikōkā anō, ka tae mātou ki te GeoCart2022 a te Porianga Tuhi Mahere o Aotearoa i Te Whanganui-a-Tara.

Tāwahi

I te Haratua 2023, ka haere tā mātou Hēkeretari, a Wendy Shaw, hei kanohi mō Aotearoa ki te hui o ia rua tau a te Rōpū Mātanga o Te Kotahitanga o ngā Whenua o te Ao mō te Ingoa Matawhenua (UNGEGN) i Te Āporo Nui. Ko ngā whāinga a te Rōpū Mātanga ko te whakarite taunahatanga whenua arowhānui, auau mā ōna whenua noho mema katoa. He tūranga ōkawa anō tō Wendy hei wāhanga o te Tokomatua a te UNGEGN. Ko āna mahi ko te:

- huawaere take o te rārangi take mō te 'Ingoa Matawhenua hei Tuku Ihotanga Ahurea hei Tuakiri'
- noho hei mema o te pae mō te take ki ngā hononga o waenga i te ingoa matawhenua me te taiao
- tāpae i ētahi pūrongo e toru o Aotearoa:
 - te putanga hou 2023 o ngā mahere Tangata Whenua (tirohia ngā taipitopito i raro nei).
 - Te whakatinanatanga a Aotearoa o ngā tūmahi rautaki a te UNGEGN e pā ana ki te ira taurite, te kanorau me te kauawhi me tētahi tukanga mō te ingoa wāhi Māori o nāianei, me
 - tā mātou pūrongo o te motu auau
- tuhi tahi i te pūrongo o te hui i te noho hei kaipūrongo hui.



Whakaahua 6. Hui 3 a te UNGEGN, Haratua 2023, Te Āporo Nui. Whakamihi: United Nations, i whakaahuatia i te 1 o Haratua 2023.

Kei te hiahia mōhio te hapori taunaha wāhi o te ao ki ā mātou kōrero me tō mātou haerenga, me tā mātou ako tonu i ngā wero me ngā angitu a ētahi atu iwi.

Torohia ngā kōrero o te hui i: https://unstats.un.org/unsd/ungegn/sessions/3rd_session_2023/#documents

Ka āta mahi mātou ki ngā mana taunaha wāhi o ētahi atu whenua e auau tūturu ai ki ngā paerewa o te ao me ngā tikanga taunaha wāhi papai. I te 2022/23 ka toro mātou ki:

- ō mātou hoa taunaha wāhi o Ahitereiria mā roto i te Rōpū Mahi o Ahitereiria me Aotearoa ka taka mai ki raro i te maru o te Komiti ā-Kāwanatanga mō te Rūri me te Mahere
- te Komiti-Whāiti o IHO⁵ GEBCO⁶ mō te Ingoa Tārainga Takere Moana
- Te Komiti Tū Tonu mō te Pārongo Matawhenua i Te Tiri o te Moana ki te Tonga.

I tāpaea e tō mātou Tokomatua ētahi tuinga e rua ki te *Group of Experts' Bulletins 64*⁷ me te *65*⁸: 'Te whai kia āhei atu ki te raraunga ingoa matawhenua', me 'Te whakakaha i te whanaungatanga, te hononga me te tūhonotanga'.

5. IHO - Whakahaere Whakatātūtū o te Ao

6. GEBCO - Tūtohi Mahere Takere Moana Whānui

7. https://unstats.un.org/unsd/ungegn/pubs/Bulletin/UNGEGN_bulletin_no_64_rev.pdf

8. https://unstats.un.org/unsd/ungegn/pubs/Bulletin/UNGEGN_bulletin_no_65.pdf

Tikanga Tūtohu

E takoto mai ana te whakahau kia whakamahia te ingoa mana i ngā tuinga mana katoa tae atu ki te tohu whenua, te mahere me te tūtohi mana, ki ngā whakaputanga pūtaiao me ngā pārongo mā te tūruhi ki te wehenga 32 o te Ture o te New Zealand Geographic Board (Ngā Pou Taunaha o Aotearoa) 2008.

Ko tā mātou ki te kore tētahi e ū ki te tikanga tūtohu ko te whakapā hāngai atu kia aro ai ki te ingoa mana ki te ingoa rānei e tika ana kia whakamahia ka whakahau anō ai kia ū ki te tikanga i te wā ka taea.

Ahakoā tā mātou whai kia mōhio te tangata mō ngā here kei runga i a rātou ki te whakamahi i te ingoa wāhi mana, e mārama ana mātou ki ngā utu me ngā mahi e ū ai ki te tikanga tūtohu. I runga i tērā whakaaro, e pai ana ki a mātou kia whakahoungia te tohu huarahi, te hanga whakatairanga, te mahere, te whārangi tukutuku me te raraunga i ngā mahi tautiaki.

Ina koa, i te 2022/23 ka whakapā atu mātou ki Te Ratonga Tirorangi ki te whakahau kia whakamahia te ingoa wāhi mana.

Huinga raraunga mō te paenoho me te wāhi o Aotearoa

I riro ōkawa mai ki a Toitū Te Whenua te huinga raraunga nei i te Whakaratonga Iwi o Aotearoa i te Pipiri 2023. I tuku kōrero atu mātou mō te whakamahi i te ingoa wāhi mana, tae atu ki te tikanga tuhi tika, me te whakarite tikanga tautiaki e rite tūturu ai ngā ingoa ki ērā kei te *New Zealand Gazetteer*. Kei te mahi tahi tonu mātou ki a Toitū Te Whenua ki te tiaki i te mana o ngā ingoa mana mō te paenoho me te wāhi.

Mahere Ingoa Wāhi Tangata Whenua

I te 1995 ka whakaputaina e mātou ngā mahere rite ki te pānui whakaahua i tino kaingākauria mō *Te Ika a Māui, The Land and its People circa 1840* me *Te Wai Pounamu, The Land and its People circa 1840*. I te rahi tonu o ngā ingoa wāhi Māori kua whakahokia ake, kua whakatikaina i raro i ngā puretumu kerēme Tiriti o Waitangi i ngā ngahurutanga tau e toru ka hori, ka whakatau tā mātou Komiti Taunahatanga Māori kua tae ki te wā mō te whakaputanga hou. Ko ngā ingoa o ngā mahere hou e rua, i tāia mai i te Pipiri 2023 ko te *Tangata Whenua Place Names – Te Ika-a-Māui me te Tangata Whenua Place Names – Te Waipounamu*.

I tata pau te toru tau i mua i te putanga pai o ngā mahere nei. I āta whakapā hāngai rawa mātou ki ngā rōpū Māori e tika ana mō te ingoa wāhi tika me te tikanga o te ingoa.

I tohaina e mātou ngā mahere ki ētahi kura e 2,500 neke atu ki ētahi mana whenua me ētahi marae anō neke atu i te 950.

Ka noho ngā mahere hei rauemi hiranga mō te marautanga hitori hou o Aotearoa i whakaterā i te 2023, ka tāia mai anō e te Tāhuhu o te Mātauranga ētahi kape 3,000 atu o tēnā me tēnā mahere kia noho wātea ai ki ngā kura. I tāia tuatahitia e Te Rūnanga o Ngāi Tahu tētahi 1,000 o Te Waipounamu ka tāia mai anō tētahi 2,000 kia ea ai te tonoa inamatahia e tō rātou iwi.

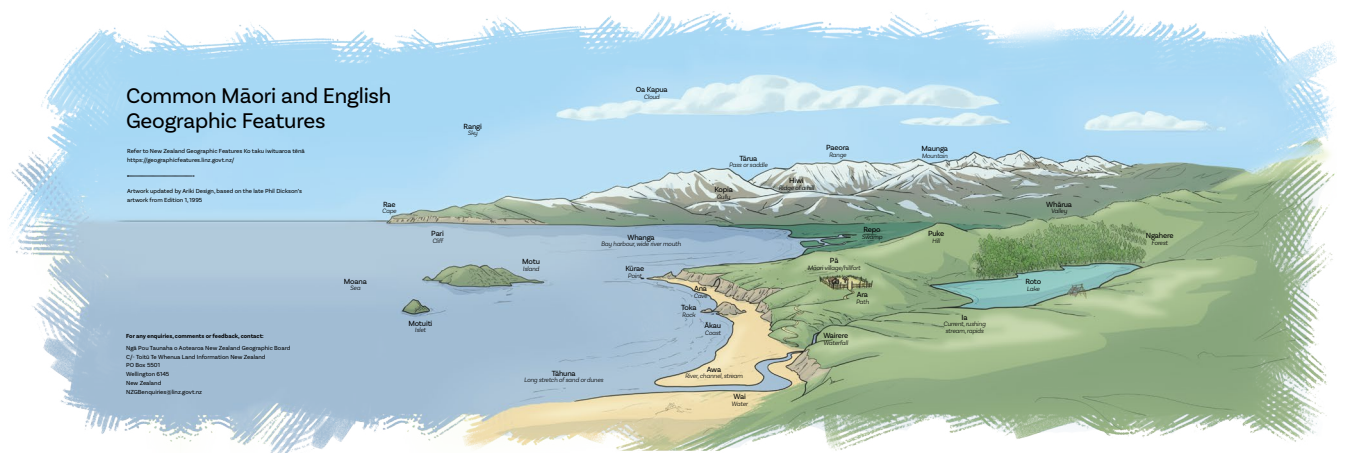
E wātea ana hoki he kape matihiko i tā mātou paetukutuku.

Ka mutu, e 816 ngā ingoa Māori taketake ake i pānuihia ki te *New Zealand Gazetteer* hei ingoa hou kua kohia i ngā mahere Ingoa Wāhi Tangata Whenua.

Whakawaiū ana te uruparenga ki ngā mahere nei mai i te tī i te tā, me te kī mai e hiahiatia ana e paingia ana e ngā iwi o Aotearoa.



Whakaahua 5 and 6. Mahere Tangata Whenua Hou. Pipiri 2023.



Whakaahua 7. Mahi toi kei muri o ngā mahere Tangata Whenua hou e whakaatu ana i ngā momo tārainga whenua ki te reo Māori me te reo Ingarihi.

Kāhetia o Aotearoa

E tono ana tā mātou Ture kia tiakina e mātou tētahi mauhanga kōrero ka wātea tūmatanui e kīia ana ko te *New Zealand Gazetteer of Official Geographic Names*. E mōhio ana mātou ki te hiranga o te whakahaere i tētahi rārangi ingoa wāhi tino tika e wātea utu kore ana, e taea noatia ana, e taea ana te whakamahi anō, ki te katoa.

Ko ā mātou tūmahi matua mō te *New Zealand Gazetteer* ko te horoi raraunga, te whakapai ake i te taumahi, te whakatinana tikanga whakamaru, te oro whakatauirā whakahua me te āpiti atu hoki i ētahi whakaurunga Hītori/Pūtakenga/Tikanga.

Horoi raraunga

I uru atu ki ngā mahi horoi raraunga te panoni hōputu ingoa tōrua atu i te taiapa ki te hōputu rītaha whakamua. I hoatu tohutō anō mātou ki ētahi ingoa matawhenua Māori mana.

Whakapai ake i te āheinga kaiwhakamahi

I te 2022/23 e rima ngā whakapaipai i oti i a mātou:

- te whakakapi i te moko o mua ki te mea hou
- te whakahou i ngā kuputoro o nāianei ki ngā whārangi tukutuku hou a Toitū Te Whenua
- te whakakapi i ngā kōrero 'Me pēhea te whakamahi' o mua ki te kōrero hou
- te whakatika i te āheinga kia puta ko tētahi mahere takatoranga whenua, kua te maherepū tae ina topa ki te rapu i tētahi ingoa motuhake
- te whakakapi i te maherepū tae mō te ratonga rōpinepine whakaahua hōputu (vector) hou a Toitū Te Whenua.

Tikanga haumarū

Hei uruparenga ki te whakamātauhia o te urutomo noa i tapia i te Whiringa-ā-nuku 2022 kia haumarū ake.

Oro Whakahua

Ko tētahi o ā mātou whāinga rautaki ko te whakarato oro whakahua mō ngā ingoa matawhenua Māori kei te *New Zealand Gazetteer*. Ka tīkina atu e mātou tētahi mātanga whakawhiti reo, kaiwetereo ki te hanga kōnae oro mō ngā ingoa matawhenua Māori mana kua oti nei te whakaū te tuhinga tika.

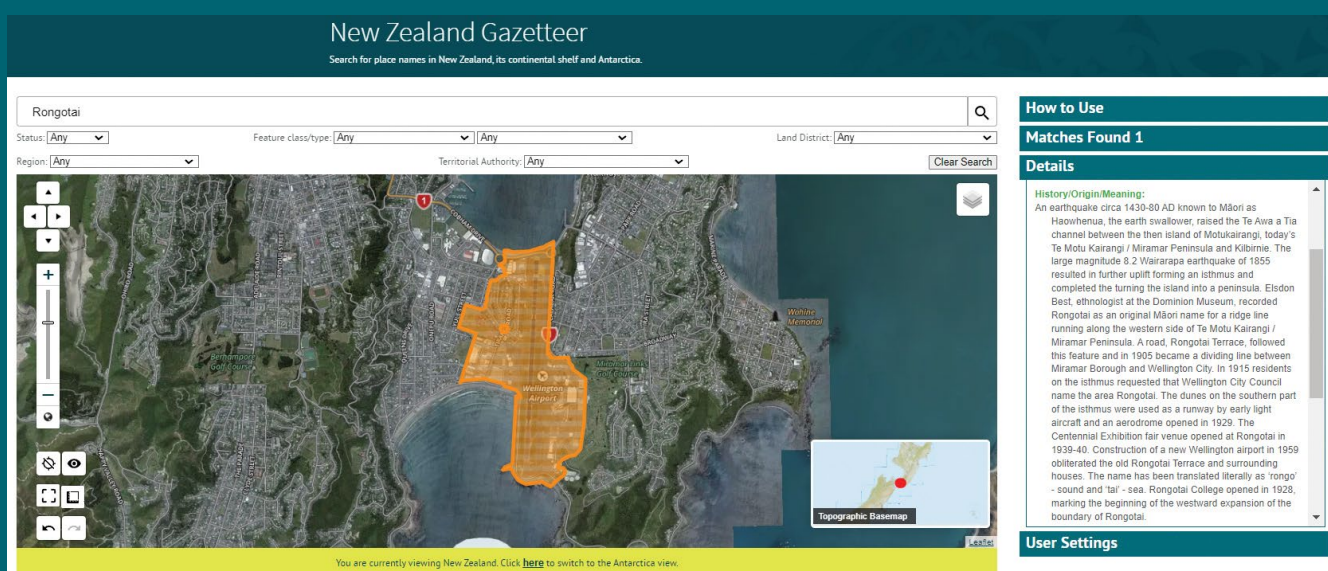
I tēnei wā e 4,230 ngā ingoa Māori mana kua whai oro i te *New Zealand Gazetteer*. Tirohia te tauira o te ingoa tōrua o Te Oneroa-a-Tōhē / Ninety Mile Beach <https://gazetteer.linz.govt.nz/place/55202>.

Te hopu i te Hītori/Pūtakenga/Tikanga

I ngā marama 12 ka hori nei kua rangahaua, kua tuhia te hītori, te pūtakenga me te tikanga o ētahi ingoa wāhi 181 me te tāpiri atu ki te *New Zealand Gazetteer*. Ko te nuinga mō te wāhi tonu engari kua uru atu anō te papa hītori me te paenoho puta noa i te motu. Ko tōna 46% nei kei Te Waipounamu ko tōna 54% kei Te Ika-a-Māui.

E 42% he ingoa wāhi reo Māori, e 36% he Pākehā, e 22% he ingoa momorua, arā, he ingoa Māori kua whakamāramahia ki te kupu Pākehā, pērā i te paenoho o Māngere Bridge.

Ko ēnei ingoa, atu i ētahi ruarua nei, kāore i raro i te 7,685 kei te *Place Names of New Zealand* a Reed and Dowling. Ehara i te mea kāore ēnei ingoa i hiranga. He rangatira, he matatini ngā kōrero mō ētahi ingoa maha tonu, ka mutu, ahakoa te kitea o te pūtakenga me te tikanga o te ingoa i ngā hītori o te rohe me ngā whakaputanga mātauranga tangata tōmua, mō ētahi atu i mate te rangahau pūranga kōrero, te mātai anō i ngā mahere rūri, te tiroiro tuhinga taketake, te tiroiro nūpepa o te wā, me te titiro anō ki ngā pūrongo a te Waitangi Taraiipiunara.



Āhua 8. Kapomata mai i te *New Zealand Gazetteer* (<https://gazetteer.linz.govt.nz/>), Hōngongoi 2023, e whakaatu ana i te Hitori/Pūtakenga/Tikanga o Rongotai ki Te Whanganui-a-tara.

Te hoatu tohutō ki ngā ingoa wāhi Māori mana

I whakatikaina e mātou ētahi ingoa wāhi Māori tawhito kua mana, i hoatu ngā tohutō ka pānuihia ki te *New Zealand Gazette*. I hua mai tēnei i te whāia haerehia o te ingoa wāhi kua takoto i raro i te hōtaka whakaaetanga.

Whakamahia o te Kāhētia

E 8,009 te maha o ngā kaiwhakamahi i te *New Zealand Gazetteer* tuihono, e 6.7% te heke iho i te tau o mua atu.

Ka taea hoki te toro te raraunga ingoa wāhi i te *New Zealand Gazetteer* i te Ratonga Raraunga a Toitū Te Whenua.

Ripanga 5. Ngā tikiake me ngā pātai mai i te 2019/2020 ki te 2022/2023 – tau pūtea e whā.

	Tikiake				Pātai ratonga tārainga tukutuku			
	2019/20	2020/21	2021/22	2022/23	2019/20	2020/21	2021/22	2022/23
Apa ingoa wāhi	761	837	618	564	21,021	55,148	127,460	75,380

Poari, komiti, kaimātaki, Tokomatua, hui

Poari me ngā komiti

E whā ngā hui a te Poari i te 2022/23. Kāore ngā hui i tuwhera ki te iwi tūmatanui engari e wātea tūmatanui ana ngā āmiki me ngā whakatau i te paetukutuku. Ka pōhitiria ngā kaimātaki o ngā umanga hoa haere (e rārangi ana i te taha tauaro) kia haere ake.

E toru ā mātou komiti: te Komiti Ingoa mō Te Tiri o te Moana ki te Tonga, te Komiti Taunahatanga Māori me te Komiti Ingoa Tārainga Takere Moana. Whakahaeretia ai e te Komiti Taunahatanga Māori ētahi o ā rātou kōrero ki te reo Māori, me te whakawhitihia o ngā āmiki ki te reo Ingarihi. Kāore ngā komiti e whakatau mō te ingoa wāhi, ko tā rātou kē he tuku tūtohunga ki te Poari.

Mema Poari me ngā kaimātaki auau te kitea

Mema poari (10)

Toihau, Kairūri Matua (ā-mana tūranga mai i Toitū Te Whenua)	Anselm Haanen
Mātanga paerewa mahere wai (ā-mana tūranga mai i Toitū Te Whenua)	Adam Greenland
Tūtohunga tokorua a te Minita mō Toitū Te Whenua	Jenni Vernon Merata Kawharu
Tautapanga a Te Rūnanga o Ngāi Tahu	Paulette Tamati-Elliffe
Tautapanga a te Federated Mountain Clubs	Shaun Barnett
Tautapanga a te New Zealand Geographical Society	Robin Kearns
Tautapanga a Te Kāhui Kaunihera o Aotearoa	Bonita Bigham
Tūtohunga tokorua a te Minita Whanaketanga Māori	Shane Te Ruki Chanel Clarke

Atu i ngā mema ā-mana tūranga, te tikanga ka kopoua ngā mema Poari mō te toru tau. I eke te wā ki ngā mema Poari tokowhā whakamutunga kua huaina ake nei i te Paengawhāwhā 2023 engari i noho tonu pau noa te tau 2022/23 i te kore e kopoua o ētahi piki tūranga.

Kaimātaki mō ngā umanga kāwanatanga

Te Puni Kōkiri	Waihoroi Shortland
Te Taura Whiri i te Reo Māori	Te Tumatakuru O’Connell (ki te Hakihea 2022) Robert Pouwhare (mai i te Paengawhāwhā 2023)
Te Arawhiti	Philip Green
Te Papa Atawhai	Sheryll Johnson

Tokomatua o te Poari

Hēkeretari	Wendy Shaw
Kaitohutohu Matua, Ingoa Tiriti Seni	Ginny Leggett (ki te 5 o Hereturikōkā 2022) Joanna Barnes-Wylie (mai i te 7 o Whiringa-ā-rangi 2022)
Kaitohutohu	Jillianne Remnant
Kaitohutohu	Christopher Stephens
Kaiwhakahaere Hononga Kiritaki - Totoronga	Tash Barneveld (ki te 12 o Mahuru 2022)

Ko te otinga o te rangahau i te ngākau pai ā-tau 2022/23 a ētahi mema Poari tokoono ko te 4.94 o roto i te 5. Ko te ngākau pai toharite taumata iti katoa ko te 3.5.

Kaikirimana

Tikanga tuhi, kaiwhakawhiti reo ā-tuhi, oro whakahua	Te Haumihiata Mason
Rangahau i te Hītori/Pūtakenga/Tikanga	Ahorangi Mike Roche
Rau tau 2024 Whakatinanatanga Mahere	Sarah Turnbull, March 2023

Hui a te Poari me ngā komiti

Hui Poari

26 Hōngongoi 2022	Hui Poari auau
2 Hakihea 2022	Hui Poari auau
26 Paengawhāwhā 2023	Hui Poari auau
22 Pipiri 2023	Hui Poari Poto, mariko

Hui komiti

21 Hōngongoi 2022	Komiti Taunahatanga Māori, mariko
16 Huitanguru 2023	Komiti Ingoa Tārainga Takere Moana
Komiti Ingoa Tārainga Takere Moana	Komiti Taunahatanga Māori, mariko

Tutukinga ahumoni

E wehe ana te kōrerohia o ngā kawenga a te Poari hei karangatanga i roto i te Pūrongo ā-Tauwāhi Tāpuinga Karangatanga Maha (MCA) o roto i te Rohenga Pūtea Whenua. Ko ngā kōrero tutukinga ahumoni e whai ake nei i tangohia mai i ngā kōrero ahumoni kua arotakea kei te Pūrongo ā-Tau a Toitū Te Whenua mō te 2022/23.

Whakahaerenga o Ngā Pou Taunaha o Aotearoa

Tūturu 2022 \$000		Kīhai i arotakea Āpitianga Whakatau Tata 2023 \$000	Tūturu 2023 \$000
783	Whiwhinga Karauna	783	783
-	- Whiwhinga kē	-	-
783	Tapeke whiwhinga	783	783
1,099	Tapeke whakapaunga	783	1,176
(316)	More hemihemi/(tarepa)	-	(393)

Whakapā

Hēkeretari, Ngā Pou Taunaha o Aotearoa

c/- Toitū Te Whenua Aotearoa
155 The Terrace
Pouaka Poutāpeta 5501
Te Whanga-nui-a-Tara 6145
Aotearoa

Waea: +64 4 460 0110
0800 665 463 (Utu kore ki Aotearoa anake)
NZGBenquiries@toitutewhenua.govt.nz
www.linz.govt.nz/our-work/new-zealand-geographic-board

