



# Record of Survey - LT 586977

---

**Survey Number** LT 586977  
**Surveyor Reference** 211167.nzt.Ray Hitchcock  
**Surveyor** Michael Lee Gibson  
**Survey Firm** BTW Company (New Plymouth)  
**Surveyor Declaration** I Michael Lee Gibson, being a licensed cadastral surveyor, certify that--  
(a) this dataset provided by me and its related survey are accurate, correct and in accordance with the Cadastral Survey Act 2002 and Cadastral Survey Rules 2021; and  
(b) the survey was undertaken by me or under my personal direction.  
Declared on 28 Nov 2023 03:08 PM

---

## Survey Details

**Dataset Description** LOTS 1 AND 2 BEING A SUBDIVISION OF SECTION 161 MOA DISTRICT  
**Purpose** LT Subdivision  
**Status** Approved as to Survey **Type** Survey  
**Land District** Taranaki **Survey Class** Class B  
**Meridional Circuit** Taranaki 2000 **Vertical Datum** None

---

## Survey Dates

**Surveyed Date** 19/01/2023 **Certified Date** 28/11/2023  
**Submitted Date** 28/11/2023 15:08:38 **Survey Approval Date** 29/11/2023  
**Deposit Date**

---

## Referenced Surveys

Survey Number	Land District	Bearing Correction
DP 17551	Taranaki	0°00'00"
SO 432	Taranaki	0°00'00"
DP 21083	Taranaki	0°00'00"
DP 439784	Taranaki	0°00'00"

---

## Territorial Authorities

New Plymouth District

---

## Comprised In

RT TNB2/1318

---

## Created Parcels

Parcels	Parcel Intent	Area	RT Reference
Lot 1 Deposited Plan 586977	Erosion		
Lot 2 Deposited Plan 586977	Fee Simple Title	1.0040 Ha	
Esplanade Strip A Deposited Plan 586977	Fee Simple Title	21.6489 Ha	1112060
	Esplanade Strip	0.0001 Ha	
<b>Total Area</b>		<b>22.6530 Ha</b>	

---

# Mark and Vector

Survey Number DP 586977  
 Meridional Circuit Taranaki 2000

From	To	Code	Bearing	Adpt Surv	Bearing Correction	Distance	Adpt Surv	Class
NAIL 2 DP 439784	IT 2 DP 320782	ob17	36°46'35" A	DP 439784	0°00'00"	163.19 A	DP 439784	
IT 2 DP 320782	IR II DP 21083	ob14	36°46'35" A	DP 439784	0°00'00"	84.07 A	DP 439784	
IR II DP 21083	PEG DP 21083	ob15	302°26'00" A	DP 21083	0°00'00"	15.36 A	DP 21083	
NAIL 2 DP 439784	IR I DP 586977	ob18	216°46'35" M			102.49 M		
IR I DP 586977	IT XII DP 17551	ob35	216°46'35" M			525.00 M		
NAIL 2 DP 439784	IT II DP 586977	ob19	277°08'20" M			137.70 M		
IT II DP 586977	IR I DP 586977	ob36	142°48'40" M			124.53 M		
IT XII DP 17551	PYRAMID SO 432	ob27	351°32'00" A	DP 17551	0°00'00"	11.88 A	DP 17551	
IR II DP 21083	IT III DP 21083	ob16	322°03'00" A	DP 21083	0°00'00"	137.73 A	DP 21083	
IT III DP 21083	IS VIII DP 21083	ob1	316°43'30" A	DP 21083	0°00'00"	373.18 A	DP 21083	
IS VIII DP 21083	IB VII DP 21083	ob7	297°17'20" A	DP 21083	0°00'00"	232.60 A	DP 21083	
IB VII DP 21083	IR VIIA DP 21083	ob8	64°21'30" A	DP 21083	0°00'00"	26.89 A	DP 21083	
IR VIIA DP 21083	PEG DP 21083	ob10	190°23'00" A	DP 21083	0°00'00"	44.91 A	DP 21083	
IR VIIA DP 21083	IR VI DP 21083	ob11	64°21'30" A	DP 21083	0°00'00"	146.78 A	DP 21083	
IR VI DP 21083	IR V DP 21083	ob46	21°41'10" A	DP 21083	0°00'00"	114.27 A	DP 21083	
IR V DP 21083	IT XXI DP 17551	ob47	6°16'10" A	DP 21083	0°00'00"	112.46 A	DP 21083	
IT XXI DP 17551	IR IX DP 17551	ob44	29°01'00" A	DP 17551	0°00'00"	268.90 A	DP 17551	
IR IX DP 17551	IT XX DP 17551	ob43	79°34'40" A	DP 17551	0°00'00"	118.05 A	DP 17551	
IT XX DP 17551	PEG DP 17551	ob49	350°45'00" A	DP 17551	0°00'00"	20.95 A	DP 17551	
PYRAMID SO 432	PEG XXVII SO 432	ob9	339°01'00" A	SO 432	0°00'00"	765.69 A	SO 432	
PEG XXVII SO 432	PEG XXVI SO 432	ob45	23°53'40" A	SO 432	0°00'00"	139.57 A	SO 432	
PEG XXVI SO 432	UNMK (12) SO 432	ob6	20°58'20" A	SO 432	0°00'00"	18.11 C		
UNMK (12) SO 432	PEG XXV SO 432	ob29	20°58'20" A	SO 432	0°00'00"	116.47 C		
PEG XXV SO 432	PEG XXIV SO 432	ob5	10°40'30" A	SO 432	0°00'00"	88.13 A	SO 432	
PEG XXIV SO 432	PEG XXIII SO 432	ob4	36°51'20" A	SO 432	0°00'00"	93.34 A	SO 432	
PEG XXIII SO 432	UNMK SO 432	ob3	30°27'00" A	SO 432	0°00'00"	71.54 C		
UNMK SO 432	PEG XXII SO 432	ob0	30°27'00" A	SO 432	0°00'00"	97.77 C		
PEG XXII SO 432	PEG XXI SO 432	ob2	50°25'00" A	SO 432	0°00'00"	73.73 A	SO 432	

# Mark and Vector

Survey Number DP 586977

Meridional Circuit Taranaki 2000

From	To	Code	Bearing	Adpt Surv	Bearing Correction	Distance	Adpt Surv	Class
PEG XXI SO 432	PEG XX SO 432	ob41	53°05'00"	A SO 432	0°00'00"	175.02 A	SO 432	
PEG XX SO 432	PEG XIX SO 432	ob42	40°17'40"	A SO 432	0°00'00"	97.57 A	SO 432	
PEG XIX SO 432	PEG XVIII SO 432	ob39	355°19'00"	A SO 432	0°00'00"	179.64 A	SO 432	
PEG XVIII SO 432	PEG SO 432	ob40	62°36'50"	A SO 432	0°00'00"	193.52 A	SO 432	
PEG SO 432	PEG SO 432	ob48	130°44'00"	A SO 432	0°00'00"	26.15 A	SO 432	
PEG SO 432	PEG DP 17551	ob50	130°47'00"	A DP 17551	0°00'00"	10.00 A	DP 17551	
PEG DP 21083	IR A DP 586977	ob25	216°19'00"	A SO 432	0°00'00"	268.36 C		Class B
IR A DP 586977	PEG B DP 586977	ob51	216°19'00"	A SO 432	0°00'00"	79.00 C		Class B
PEG B DP 586977	PEG MOA DIST	ob53	216°19'00"	A SO 432	0°00'00"	3.00 C		Class B
PEG MOA DIST	PYRAMID SO 432	ob24	216°19'00"	A SO 432	0°00'00"	514.90 C		
UNMK (12) SO 432	PEG 14 SO 432	ob30	130°44'00"	A SO 432	0°00'00"	66.39 A	SO 432	
PEG 14 SO 432	UNMK 1 DP 586977	ob22	130°44'00"	A SO 432	0°00'00"	19.75 C		Class BD
UNMK 1 DP 586977	UNMK 3 DP 586977	ob31	130°44'00"	A SO 432	0°00'00"	12.73 C		Class BD
UNMK 3 DP 586977	PEG C DP 586977	ob52	130°44'00"	A SO 432	0°00'00"	456.07 C		Class BD
PEG C DP 586977	PEG MOA DIST	ob54	130°44'00"	A SO 432	0°00'00"	126.42 C		Class B
PEG C DP 586977	PEG D DP 586977	ob55	41°22'00"	C		81.76 C		Class B
PEG D DP 586977	IR A DP 586977	ob34	130°44'00"	C		119.18 C		Class B
PEG DP 21083	UNMK DP 21083	ob26	310°44'00"	A DP 21083	0°00'00"	198.72 A	DP 21083	Class B
UNMK DP 21083	PEG DP 21083	ob12	310°44'00"	A DP 21083	0°00'00"	485.03 A	DP 21083	Class B
PEG DP 21083	UNMK 2 DP 586977	ob13	310°44'00"	A DP 21083	0°00'00"	3.89 C		Class BD
UNMK 2 DP 586977	UNMK DP 21083	ob33	310°44'00"	C		12.61 C		Class BD
UNMK 1 DP 586977	UNMK 4 DP 586977	ob32	4°17'00"	C		201.93 C		
UNMK 4 DP 586977	UNMK DP 21083	ob56	37°01'30"	C		187.25 C		
PEG 14 SO 432	UNMK 4 DP 586977	ob23	9°03'20"	C		190.86 C		
IT II DP 586977	PEG C DP 586977	ob37	251°24'00"	M		33.33 M		

# Mark and Vector

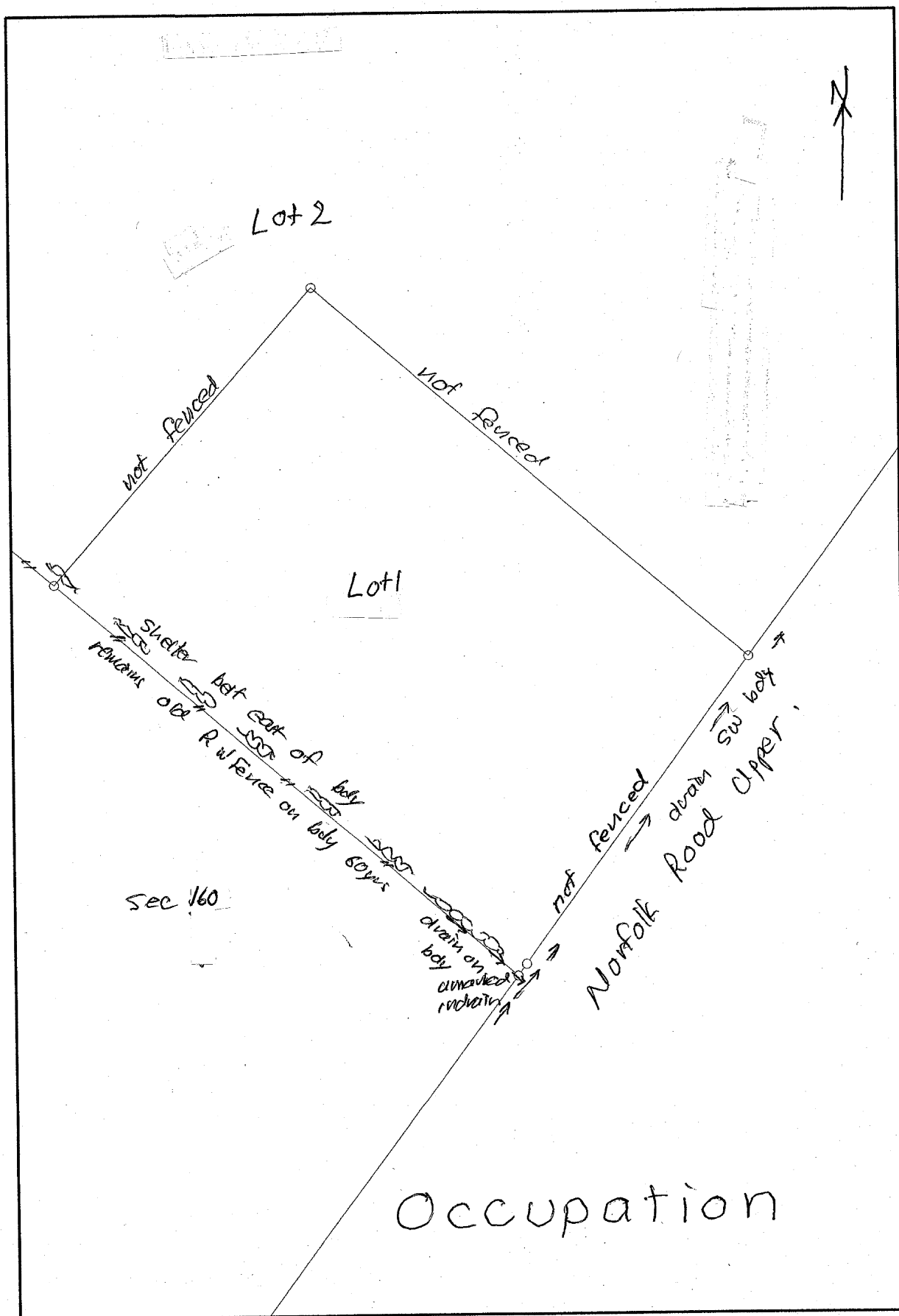
Survey Number DP 586977

Meridional Circuit Taranaki 2000

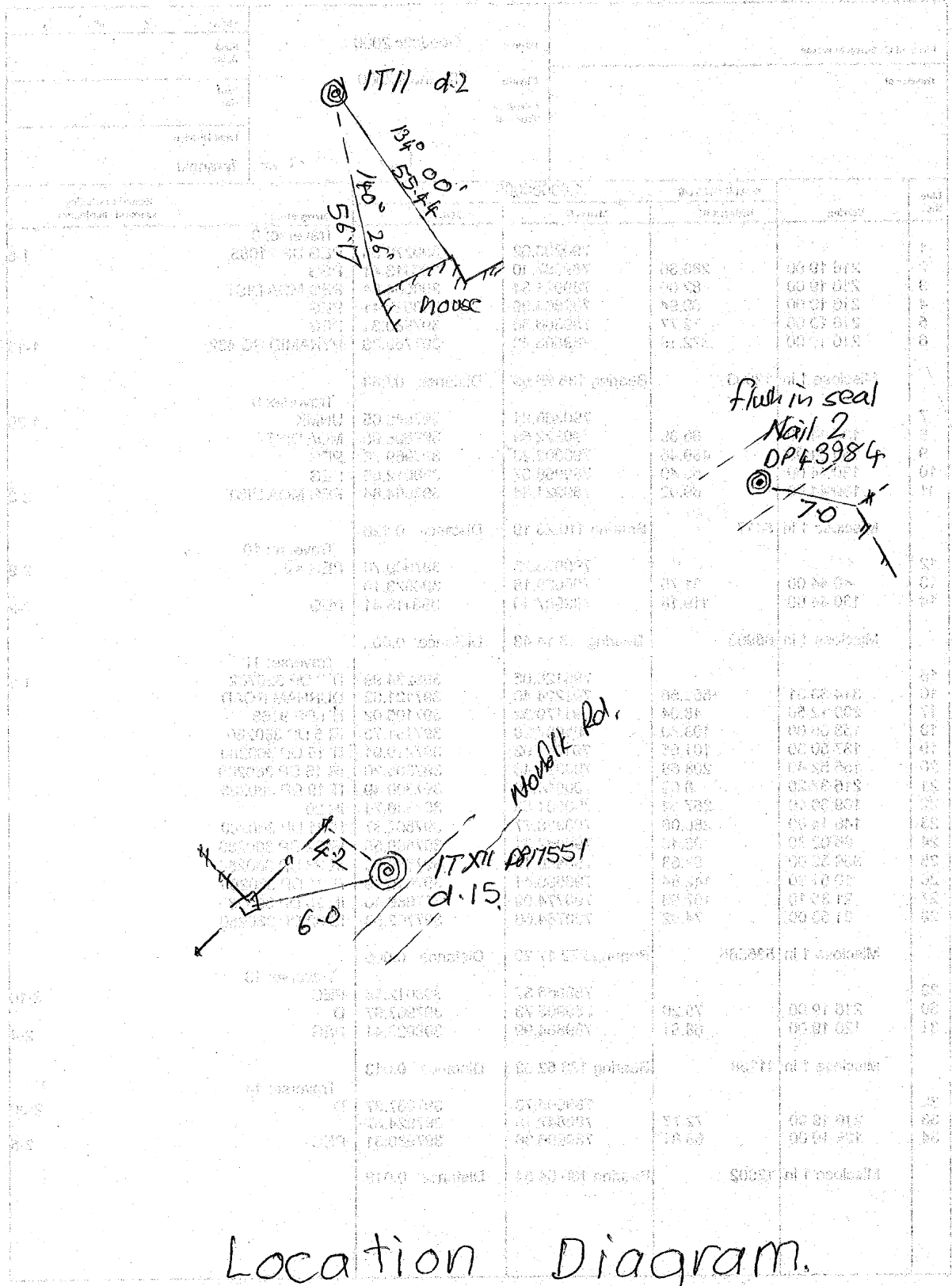
From	To	Code	Bearing	Adpt Surv	Bearing Correction	Distance	Adpt Surv	Class
IT II DP 586977	PEG D DP 586977	ob38	23°52'00" M			55.47 M		
NAIL 2 DP 439784	IR A DP 586977	ob20	247°25'00" M			25.86 M		
NAIL 2 DP 439784	PEG B DP 586977	ob21	223°50'40" M			102.02 M		
IT XII DP 17551	IT 1 DP 439784	ob28	161°24'10" M			73.44 M		

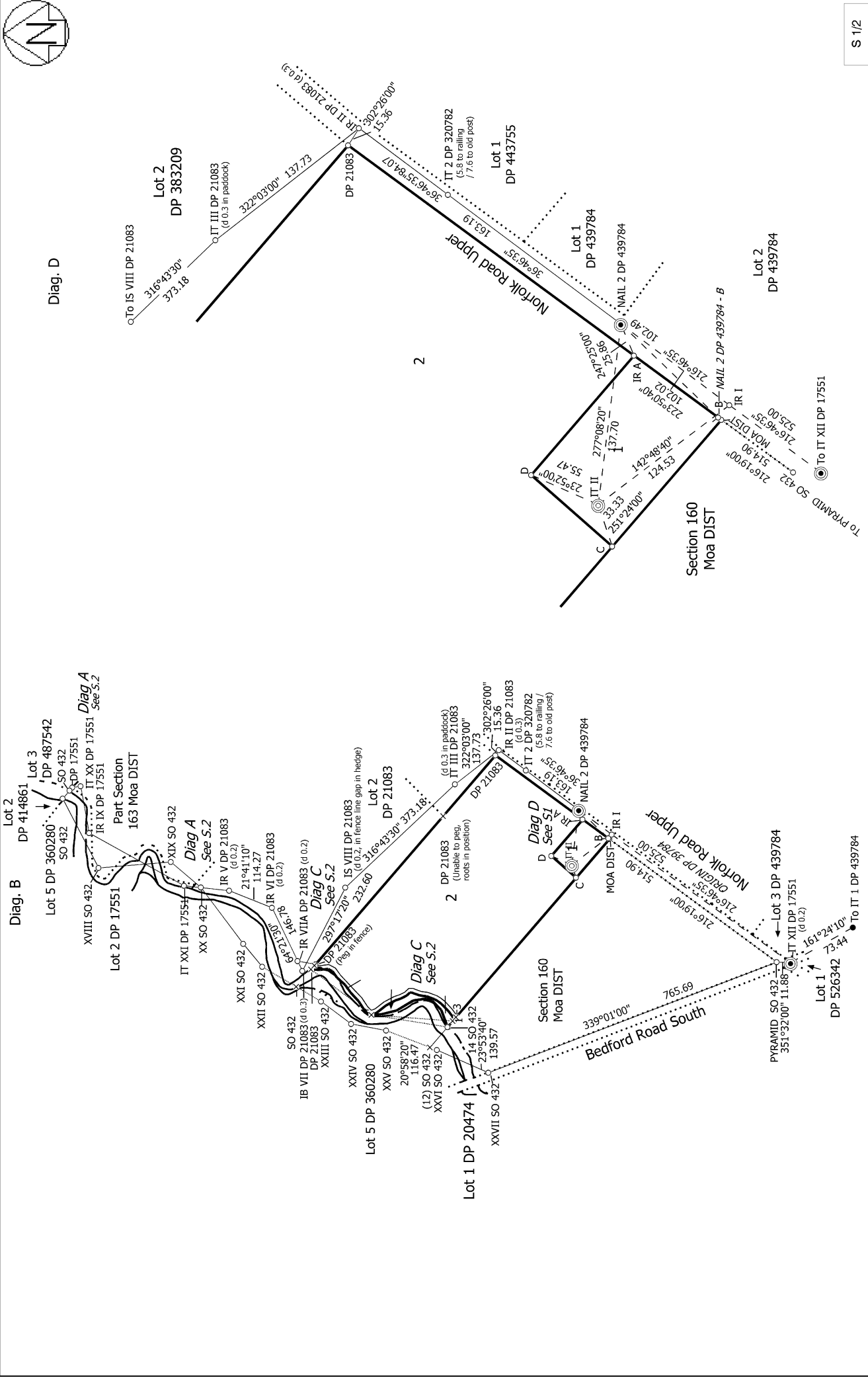
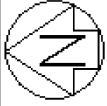
Mark Name	Mark Condition	Description
IB VII DP 21083		d 0.3
IR II DP 21083		d 0.3
IR V DP 21083		d 0.2
IR VI DP 21083		d 0.2
IR VIIA DP 21083		d 0.2
IS VIII DP 21083		d 0.2, in fence line gap in hedge
IT 2 DP 320782		5.8 to railing / 7.6 to old post
IT III DP 21083		d 0.3 in paddock
IT XII DP 17551		d 0.2
PEG DP 21083		Peg in fence
UNMK DP 21083		Unable to peg, roots in position

\*\*\* End of Report \*\*\*



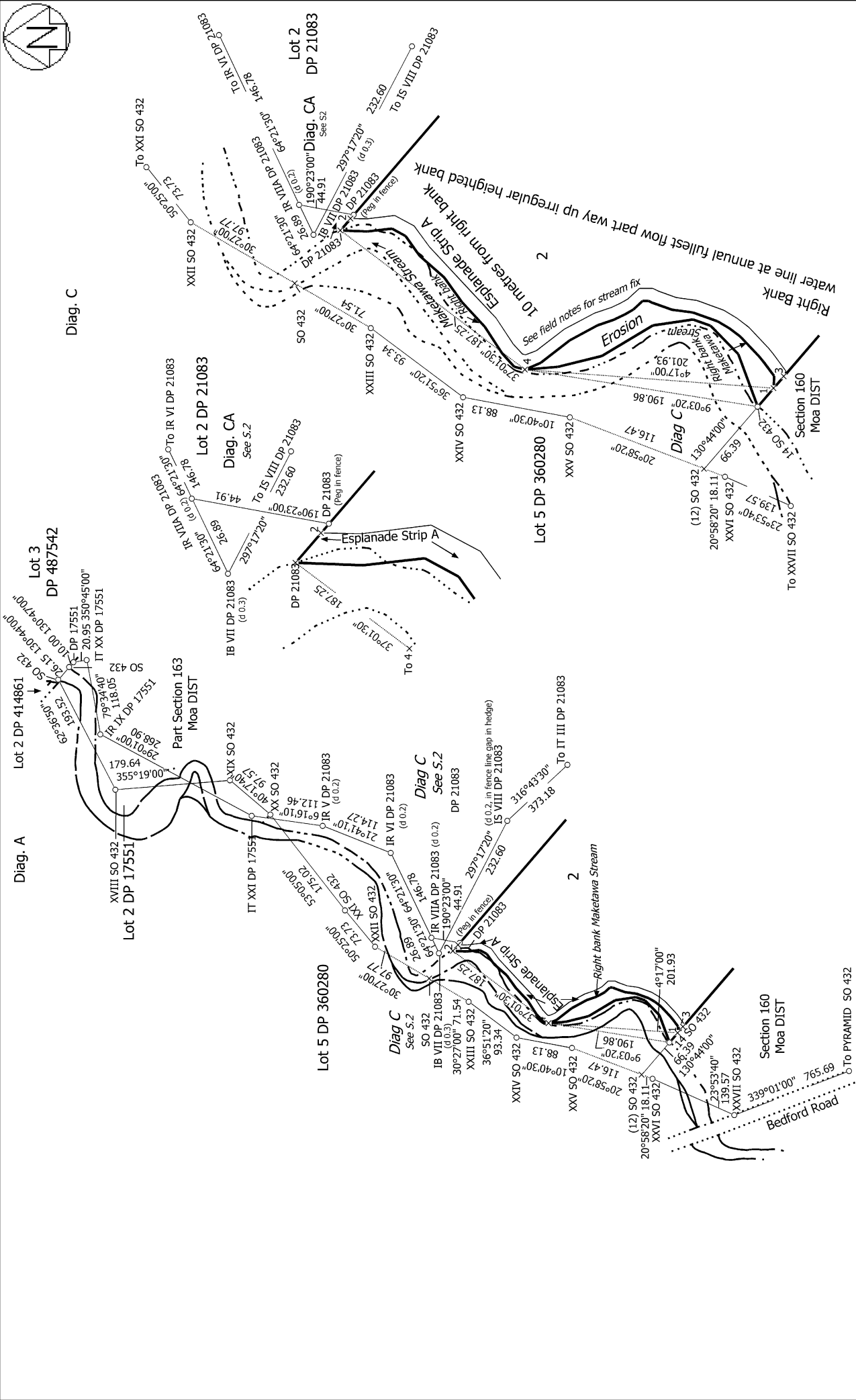
# Occupation Diagram





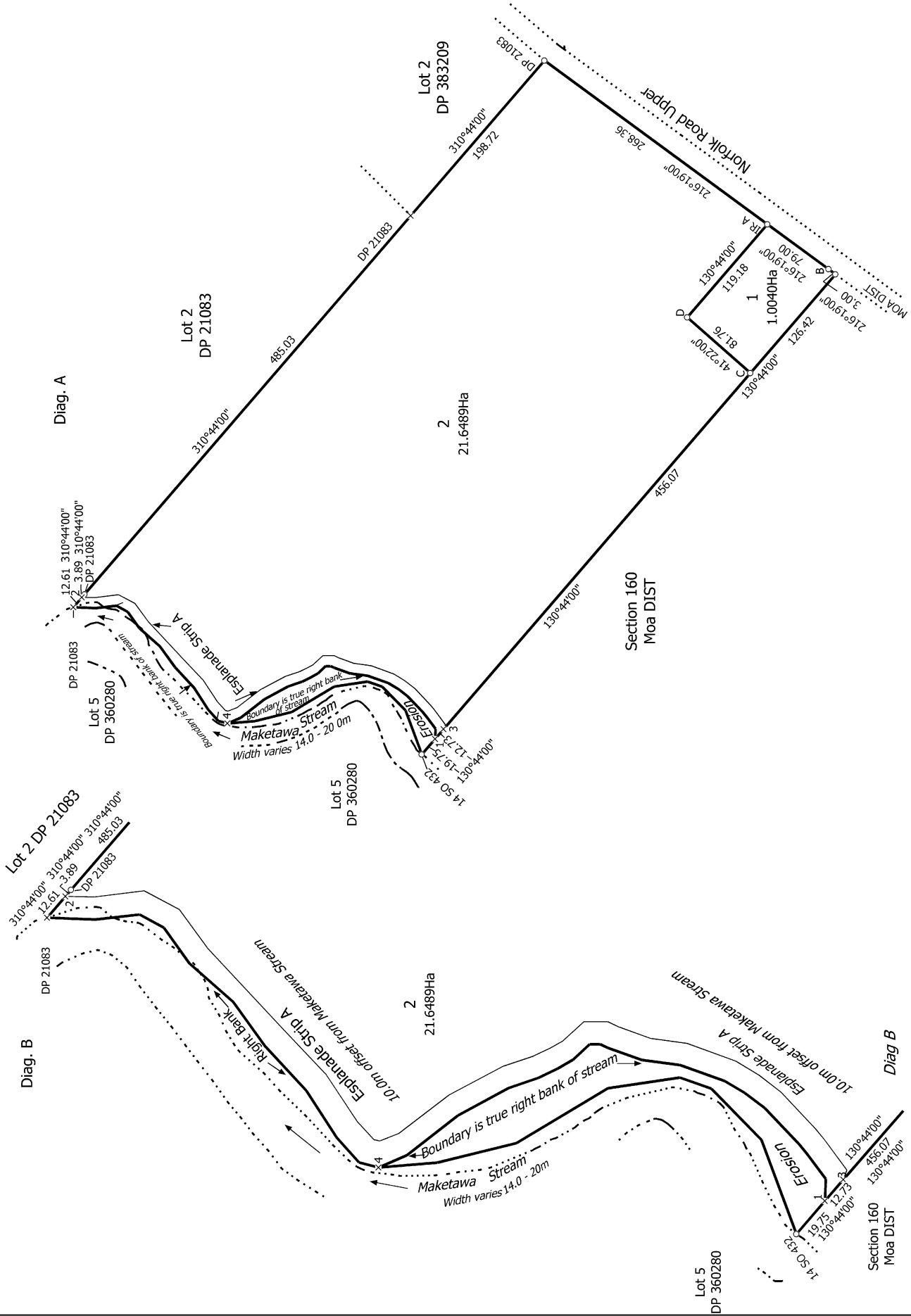
S 1/2

<p>Land District: Taranaki</p> <p><b>Digitally Generated Plan</b></p> <p>Generated on: 29/11/2023 11:05am   Page 7 of 9</p>	<p><b>LOTS 1 AND 2 BEING A SUBDIVISION OF SECTION 161 MOA DISTRICT</b></p>	<p>Surveyor: Michael Lee Gibson</p> <p>Firm: BTW Company (New Plymouth)</p> <p>Date of Survey: 19/01/2023</p>	<p>Record of Survey</p> <p>LT 586977</p> <p>Approved on: 29/11/2023</p>
---	--	---	---



<p>Land District: Taranaki</p> <p><b>Digitally Generated Plan</b></p> <p>Generated on: 29/11/2023 11:05am Page 8 of 9</p>	<p><b>LOTS 1 AND 2 BEING A SUBDIVISION OF SECTION 161 MOA DISTRICT</b></p>	<p>Surveyor: Michael Lee Gibson          Firm: BTW Company (New Plymouth)          Date of Survey: 19/01/2023</p>	<p>Record of Survey  <b>LT 586977</b>          Approved on: 29/11/2023</p>
---	--	---	--





T 1/1

Record of Survey  
 LT 586977  
 Approved on: 29/11/2023

Surveyor: Michael Lee Gibson  
 Firm: BTW Company (New Plymouth)  
 Date of Survey: 19/01/2023

**LOTS 1 AND 2 BEING A SUBDIVISION OF SECTION 161 MOA DISTRICT**

Land District: Taranaki  
**Digitally Generated Plan**  
 Generated on: 29/11/2023 11:05am Page 9 of 9