



# Record of Survey - LT 587395

---

<b>Survey Number</b>	LT 587395
<b>Surveyor Reference</b>	21150 Stage 2
<b>Surveyor</b>	Samuel Broadmore
<b>Survey Firm</b>	Taylor Patrick Limited (New Plymouth)
<b>Surveyor Declaration</b>	I Samuel Broadmore, being a licensed cadastral surveyor, certify that-- (a) this dataset provided by me and its related survey are accurate, correct and in accordance with the Cadastral Survey Act 2002 and Cadastral Survey Rules 2021; and (b) the survey was undertaken by me or under my personal direction. Declared on 31 Oct 2023 02:52 PM

---

## Survey Details

<b>Dataset Description</b>	Lots 7, 8, 9, and 10 Being a Subdivision of Section 9 Block IV Kaupokonui Survey District		
<b>Purpose</b>	LT Subdivision		
<b>Status</b>	Approved as to Survey	<b>Type</b>	Survey
<b>Land District</b>	Taranaki	<b>Survey Class</b>	Class B
<b>Meridional Circuit</b>	Taranaki 2000	<b>Vertical Datum</b>	None

---

## Survey Dates

<b>Surveyed Date</b>	20/03/2023	<b>Certified Date</b>	31/10/2023
<b>Submitted Date</b>	31/10/2023 14:52:33	<b>Survey Approval Date</b>	31/10/2023
<b>Deposit Date</b>			

---

## Referenced Surveys

Survey Number	Land District	Bearing Correction
LT 324227	Taranaki	0°00'00"
DP 590339	Taranaki	0°00'00"
DP 11997	Taranaki	0°00'00"
LT 18177	Taranaki	0°00'00"
SO 21/4	Taranaki	0°01'00"
DP 424069	Taranaki	0°00'00"
DP 586643	Taranaki	0°00'00"

---

## Territorial Authorities

Stratford District

---

## Comprised In

RT TN95/85

---

## Created Parcels

Parcels	Parcel Intent	Area	RT Reference
Lot 7 Deposited Plan 587395	Fee Simple Title	1.0997 Ha	1126176
Lot 8 Deposited Plan 587395	Fee Simple Title	2.4149 Ha	1126177
Esplanade Strip A Deposited Plan 587395	Esplanade Strip		
Lot 9 Deposited Plan 587395	Fee Simple Title	20.7344 Ha	1126178



# Record of Survey - LT 587395

---

## Created Parcels

Parcels	Parcel Intent	Area	RT Reference
Lot 10 Deposited Plan 587395	Fee Simple Title	6.6001 Ha	1126179
<b>Total Area</b>		<u>30.8491 Ha</u>	

# Mark and Vector

Survey Number DP 587395  
 Meridional Circuit Taranaki 2000

From	To	Code	Bearing	Adpt Surv	Bearing Correction	Distance	Adpt Surv	Class
IT SO 9944	IT 1 DP 586643	ob0	171°30'38"	A DP 586643	0°00'00"	878.47 A	DP 586643	
IT 1 DP 586643	IT 4 DP 424069	ob2	2°00'28"	A DP 586643	0°00'00"	887.51 A	DP 586643	
IT 4 DP 424069	IT SO 9944	ob4	263°34'30"	A DP 424069	0°00'00"	161.81 A	DP 424069	
IT 1 DP 586643	IS 4 DP 590339	ob3	35°03'12"	M		798.57 M		
IS 4 DP 590339	IT 6 DP 586643	ob5	241°12'02"	M		459.96 M		
IT 6 DP 586643	IT 1 DP 586643	ob19	187°19'47"	A DP 586643	0°00'00"	435.70 A	DP 586643	
IS 4 DP 590339	IT 7 DP 586643	ob6	202°40'30"	M		352.53 M		
IT 7 DP 586643	IT 1 DP 586643	ob22	224°29'58"	A DP 586643	0°00'00"	460.48 A	DP 586643	
IT 6 DP 586643	IT 7 DP 586643	ob20	111°12'50"	A DP 586643	0°00'00"	286.58 A	DP 586643	
IS 4 DP 590339	IP DP 3659	ob7	98°41'38"	M		1,322.07 M		
IS 4 DP 590339	IS VIII LT 18177	ob8	84°51'16"	M		811.49 M		
IS 4 DP 590339	IB VII LT 18177	ob9	81°13'50"	M		742.85 M		
IS 4 DP 590339	IT 6 DP 424069	ob10	9°16'40"	M		154.02 M		
IP DP 3659	IS VIII LT 18177	ob24	298°39'55"	A LT 324227	0°00'00"	568.31 A	LT 324227	
IS VIII LT 18177	IB VII LT 18177	ob25	298°39'55"	A DP 424069	0°00'00"	84.39 A	DP 424069	
IB VII LT 18177	IT 6 DP 424069	ob26	273°07'45"	A DP 424069	0°00'00"	710.40 A	DP 424069	
IB VII LT 18177	PEG (1) DP 3659	ob27	150°58'30"	A LT 18177	0°00'00"	156.17 A	LT 18177	
PEG (1) DP 3659	IS VIII LT 18177	ob28	358°58'00"	A LT 18177	0°00'00"	96.10 A	LT 18177	
IS 4 DP 590339	IS 3 DP 590339	ob11	270°33'34"	M		490.68 M		
IS 3 DP 590339	IT 6 DP 586643	ob29	158°50'40"	M		242.72 M		
IS 3 DP 590339	IS 3 DP 587395	ob30	103°45'45"	M		271.53 M		
IS 3 DP 587395	IS 4 DP 587395	ob66	131°43'55"	M		161.62 M		
IS 4 DP 587395	IS 5 DP 587395	ob90	151°38'55"	M		100.66 M		
IS 5 DP 587395	IS 6 DP 587395	ob104	158°53'45"	M		57.92 M		
IS 6 DP 587395	IS 4 DP 590339	ob112	6°55'40"	M		312.28 M		
IS 3 DP 590339	IT (1) SO 21/4	ob31	302°28'00"	M		122.81 M		
IT (1) SO 21/4	IT 5 DP 586643	ob44	181°49'10"	M		179.54 M		
IT 5 DP 586643	IT 1 DP 586643	ob47	165°27'45"	A DP 586643	0°00'00"	563.00 A	DP 586643	
IT (1) SO 21/4	PEG 63 DP 587395	ob45	8°08'00"	M		140.31 M		Class B
PEG 63 DP 587395	IT (2) SO 376	ob48	8°08'00"	M		20.12 M		
IT (2) SO 376	IT SO 9944	ob50	229°18'00"	A DP 11997	0°00'00"	22.09 A	DP 11997	
IT 7 DP 586643	PEG (16) SO 21/4	ob23	133°40'05"	A DP 586643	0°00'00"	203.84 A	DP 586643	
IT SO 9944	IT 5 DP 424069	ob1	96°43'50"	A DP 424069	0°00'00"	403.98 A	DP 424069	
IT 5 DP 424069	IT 6 DP 424069	ob51	94°15'30"	A DP 424069	0°00'00"	212.57 A	DP 424069	
IT 5 DP 424069	PEG 5A DP 424069	ob52	352°11'00"	A DP 424069	0°00'00"	16.55 A	DP 424069	
PEG 63 DP 587395	PEG 13 DP 587395	ob49	96°46'00"	A SO 21/4	0°01'00"	82.13 C		Class B
PEG 13 DP 587395	PEG 12 DP 587395	ob62	96°46'00"	A SO 21/4	0°01'00"	440.91 C		Class B

# Mark and Vector

Survey Number DP 587395

Meridional Circuit Taranaki 2000

From	To	Code	Bearing	Adpt Surv	Bearing Correction	Distance	Adpt Surv	Class
PEG 12 DP 587395	PEG 11 DP 587395	ob60	96°46'00"	A SO 21/4	0°01'00"	8.00 C		Class B
PEG 11 DP 587395	PEG 10 DP 587395	ob58	96°46'00"	A SO 21/4	0°01'00"	59.27 C		Class B
PEG 10 DP 587395	PEG 15 DP 587395	ob54	180°01'00"	A SO 21/4	0°01'00"	161.11 C		Class B
PEG 15 DP 587395	PEG 61 DP 587395	ob65	180°01'00"	A SO 21/4	0°01'00"	267.97 C		Class B
PEG 61 DP 587395	UNMK 82 DP 587395	ob152	180°01'00"	A SO 21/4	0°01'00"	149.68 C		Class BD
UNMK 82 DP 587395	UNMK 81 DP 587395	ob154	180°01'00"	A SO 21/4	0°01'00"	13.14 C		Class BD
UNMK 81 DP 587395	PEG (16) SO 21/4	ob80	180°01'00"	A SO 21/4	0°01'00"	14.17 C		
PEG 5A DP 424069	IT (2) SO 376	ob53	276°46'00"	A SO 21/4	0°01'00"	384.88 A DP 424069		
IT 6 DP 586643	UNMK SO 21/4	ob21	282°16'00"	A DP 586643	0°00'00"	225.61 A DP 586643		
IT (1) SO 21/4	PEG (2) SO 7499	ob46	188°09'04"	A DP 586643	0°00'00"	115.59 A DP 586643		Class B
PEG (2) SO 7499	PEG (20) SO 21/4	ob55	158°09'00"	A SO 21/4	0°01'00"	40.23 A SO 21/4		Class B
PEG (20) SO 21/4	UNMK 83 DP 587395	ob56	188°09'00"	A SO 21/4	0°01'00"	71.05 C		Class BD
UNMK 83 DP 587395	PEG (21) SO 21/4	ob155	188°09'00"	A SO 21/4	0°01'00"	4.09 C		Class BD
PEG (21) SO 21/4	UNMK 80 DP 587395	ob57	223°04'00"	A SO 21/4	0°01'00"	10.06 C		Class BD
UNMK 80 DP 587395	UNMK SO 21/4	ob79	223°04'00"	A SO 21/4	0°01'00"	14.98 C		
IS 3 DP 590339	UNMK 80 DP 587395	ob32	216°12'40"	C		207.59 C		
IS 6 DP 587395	UNMK 81 DP 587395	ob113	160°52'10"	C		150.14 C		
IS 3 DP 590339	PEG 13 DP 587395	ob33	359°20'55"	M		195.16 M		
IS 3 DP 590339	PEG 63 DP 587395	ob34	337°45'30"	M		221.29 M		
IS 3 DP 590339	PEG 16 DP 587395	ob35	354°21'30"	M		106.93 M		
IS 3 DP 590339	PEG 17 DP 587395	ob36	17°12'00"	M		95.26 M		
IS 3 DP 590339	POST 18 DP 587395	ob37	29°06'30"	M		90.19 M		
IS 3 DP 590339	POST 19 DP 587395	ob38	39°20'10"	M		90.90 M		
IS 3 DP 590339	POST 20 DP 587395	ob39	48°23'30"	M		96.56 M		
IS 3 DP 590339	PEG 21 DP 587395	ob40	55°37'30"	M		105.58 M		

# Mark and Vector

Survey Number DP 587395

Meridional Circuit Taranaki 2000

From	To	Code	Bearing	Adpt Surv	Bearing Correction	Distance	Adpt Surv	Class
IS 3 DP 590339	POST 22 DP 587395	ob41	60°57'30" M			110.75 M		
IS 3 DP 590339	POST 23 DP 587395	ob42	64°41'20" M			117.51 M		
IS 3 DP 590339	POST 24 DP 587395	ob43	72°34'40" M			132.37 M		
IS 3 DP 587395	POST 25 DP 587395	ob67	322°12'00" M			94.01 M		
IS 3 DP 587395	POST 26 DP 587395	ob68	341°01'00" M			64.44 M		
IS 3 DP 587395	POST 27 DP 587395	ob69	9°51'00" M			42.39 M		
IS 3 DP 587395	POST 28 DP 587395	ob70	29°07'00" M			42.85 M		
IS 3 DP 587395	POST 29 DP 587395	ob71	45°42'00" M			42.16 M		
IS 3 DP 587395	POST 30 DP 587395	ob72	54°03'00" M			47.78 M		
IS 3 DP 587395	POST 31 DP 587395	ob73	73°20'00" M			56.63 M		
IS 3 DP 587395	POST 32 DP 587395	ob74	76°49'00" M			61.61 M		
IS 3 DP 587395	POST 33 DP 587395	ob75	91°22'00" M			70.76 M		
IS 3 DP 587395	POST 34 DP 587395	ob76	97°04'00" M			77.47 M		
IS 3 DP 587395	POST 35 DP 587395	ob77	101°30'00" M			93.71 M		
IS 3 DP 587395	POST 36 DP 587395	ob78	106°41'00" M			103.46 M		
IS 4 DP 587395	PEG 37 DP 587395	ob91	5°32'00" M			60.58 M		
IS 4 DP 587395	PEG 38 DP 587395	ob92	47°18'00" M			60.76 M		
IS 4 DP 587395	PEG 39 DP 587395	ob93	63°51'00" M			69.10 M		
IS 4 DP 587395	PEG 40 DP 587395	ob94	69°50'40" M			76.80 M		
IS 4 DP 587395	PEG 41 DP 587395	ob95	75°07'00" M			79.36 M		
IS 4 DP 587395	PEG 42 DP 587395	ob96	81°48'00" M			79.14 M		
IS 4 DP 587395	PEG 43 DP 587395	ob97	90°36'20" M			88.32 M		
IS 4 DP 587395	PEG 44 DP 587395	ob98	100°12'20" M			93.08 M		
IS 4 DP 587395	PEG 45 DP 587395	ob99	110°57'00" M			93.46 M		

# Mark and Vector

Survey Number DP 587395

Meridional Circuit Taranaki 2000

From	To	Code	Bearing	Adpt Surv	Bearing Correction	Distance	Adpt Surv	Class
IS 4 DP 587395	PEG 46 DP 587395	ob100	119°53'00"	M		100.17 M		
IS 4 DP 587395	PEG 47 DP 587395	ob101	129°32'00"	M		107.33 M		
IS 4 DP 587395	PEG 48 DP 587395	ob102	140°30'40"	M		81.89 M		
IS 4 DP 587395	PEG 49 DP 587395	ob103	145°01'00"	M		79.98 M		
IS 5 DP 587395	PEG 50 DP 587395	ob105	354°59'00"	M		15.52 M		
IS 5 DP 587395	PEG 51 DP 587395	ob106	20°03'00"	M		16.69 M		
IS 5 DP 587395	PEG 52 DP 587395	ob107	76°15'00"	M		31.42 M		
IS 5 DP 587395	PEG 53 DP 587395	ob108	111°44'00"	M		39.88 M		
IS 5 DP 587395	PEG 54 DP 587395	ob109	122°17'00"	M		53.57 M		
IS 5 DP 587395	PEG 55 DP 587395	ob110	147°01'00"	M		38.57 M		
IS 5 DP 587395	PEG 56 DP 587395	ob111	154°54'00"	M		39.88 M		
POST 27 DP 587395	POST 28 DP 587395	ob119	107°40'00"	C		14.27 C		Class B
POST 28 DP 587395	POST 29 DP 587395	ob120	130°36'00"	C		12.28 C		Class B
POST 29 DP 587395	POST 30 DP 587395	ob121	99°18'00"	C		8.62 C		Class B
POST 30 DP 587395	POST 31 DP 587395	ob122	127°10'00"	C		19.54 C		Class B
POST 31 DP 587395	POST 32 DP 587395	ob123	110°54'00"	C		6.14 C		Class B
POST 32 DP 587395	POST 33 DP 587395	ob124	145°39'00"	C		19.06 C		Class B
PEG 13 DP 587395	PEG 16 DP 587395	ob63	185°21'00"	C		89.12 C		Class B
PEG 16 DP 587395	PEG 17 DP 587395	ob81	111°43'00"	C		41.64 C		Class B
PEG 17 DP 587395	POST 18 DP 587395	ob82	127°50'00"	C		19.89 C		Class B
POST 18 DP 587395	POST 19 DP 587395	ob83	121°43'00"	C		16.16 C		Class B
POST 19 DP 587395	POST 20 DP 587395	ob84	112°59'00"	C		15.84 C		Class B
POST 20 DP 587395	PEG 21 DP 587395	ob85	106°47'00"	C		15.61 C		Class B
PEG 21 DP 587395	POST 22 DP 587395	ob86	121°07'00"	C		11.31 C		Class B

# Mark and Vector

Survey Number DP 587395

Meridional Circuit Taranaki 2000

From	To	Code	Bearing	Adpt Surv	Bearing Correction	Distance	Adpt Surv	Class
POST 22 DP 587395	POST 23 DP 587395	ob87	110°32'00"	C		10.04 C		Class B
POST 23 DP 587395	POST 24 DP 587395	ob88	117°51'00"	C		22.70 C		Class B
POST 24 DP 587395	POST 25 DP 587395	ob89	110°34'00"	C		85.25 C		Class B
POST 25 DP 587395	POST 26 DP 587395	ob117	110°01'00"	C		39.01 C		Class B
POST 26 DP 587395	POST 27 DP 587395	ob118	124°11'00"	C		34.11 C		Class B
POST 33 DP 587395	POST 34 DP 587395	ob125	141°56'00"	C		9.96 C		Class B
POST 34 DP 587395	POST 35 DP 587395	ob126	121°28'00"	C		17.53 C		Class B
POST 35 DP 587395	POST 36 DP 587395	ob127	146°33'00"	C		13.20 C		Class B
POST 36 DP 587395	PEG 37 DP 587395	ob128	122°44'00"	C		32.51 C		Class B
PEG 37 DP 587395	PEG 38 DP 587395	ob129	116°11'00"	C		43.25 C		Class B
PEG 38 DP 587395	PEG 39 DP 587395	ob130	121°45'00"	C		20.43 C		Class B
PEG 39 DP 587395	PEG 40 DP 587395	ob131	111°37'00"	C		10.83 C		Class B
PEG 40 DP 587395	PEG 41 DP 587395	ob132	142°53'00"	C		7.62 C		Class B
PEG 41 DP 587395	PEG 42 DP 587395	ob133	169°49'00"	C		9.24 C		Class B
PEG 42 DP 587395	PEG 43 DP 587395	ob134	140°45'00"	C		15.78 C		Class B
PEG 43 DP 587395	PEG 44 DP 587395	ob135	168°03'00"	C		15.90 C		Class B
PEG 44 DP 587395	PEG 45 DP 587395	ob136	194°20'00"	C		17.47 C		Class B
PEG 45 DP 587395	PEG 46 DP 587395	ob137	181°29'00"	C		16.50 C		Class B
PEG 46 DP 587395	PEG 47 DP 587395	ob138	192°28'00"	C		18.86 C		Class B
PEG 47 DP 587395	PEG 48 DP 587395	ob139	279°28'00"	C		31.13 C		Class B
PEG 48 DP 587395	PEG 49 DP 587395	ob140	249°27'00"	C		6.64 C		Class B
PEG 49 DP 587395	PEG 50 DP 587395	ob141	175°34'00"	C		7.62 C		Class B
PEG 50 DP 587395	PEG 51 DP 587395	ob142	88°14'00"	C		7.08 C		Class B
PEG 51 DP 587395	PEG 52 DP 587395	ob143	108°19'00"	C		26.12 C		Class B

# Mark and Vector

Survey Number DP 587395

Meridional Circuit Taranaki 2000

From	To	Code	Bearing	Adpt Surv	Bearing Correction	Distance	Adpt Surv	Class
PEG 52 DP 587395	PEG 53 DP 587395	ob144	163°38'00"	C		23.17 C		Class B
PEG 53 DP 587395	PEG 54 DP 587395	ob145	149°13'00"	C		16.11 C		Class B
PEG 54 DP 587395	PEG 55 DP 587395	ob146	261°15'00"	C		24.58 C		Class B
PEG 55 DP 587395	PEG 56 DP 587395	ob147	227°20'00"	C		5.55 C		Class B
IS 6 DP 587395	PEG 58 DP 587395	ob114	356°07'00"	M		15.46 M		
IS 6 DP 587395	PEG 59 DP 587395	ob115	46°46'00"	M		27.07 M		
IS 6 DP 587395	PEG 61 DP 587395	ob116	66°56'00"	M		53.52 M		
IS 4 DP 590339	PEG 15 DP 587395	ob12	150°59'00"	M		24.10 M		
IS 4 DP 590339	PEG 10 DP 587395	ob13	4°48'00"	M		140.54 M		
IS 4 DP 590339	PEG 12 DP 587395	ob14	339°36'00"	M		157.87 M		
IS 4 DP 590339	PEG 11 DP 587395	ob15	342°14'30"	M		154.38 M		
IS 4 DP 590339	PEG 14 DP 587395	ob16	259°49'00"	M		67.00 M		
IS 4 DP 590339	PEG 60 DP 587395	ob17	261°36'00"	M		74.70 M		
IS 4 DP 590339	PEG 62 DP 587395	ob18	269°14'30"	M		149.13 M		
PEG 12 DP 587395	PEG 60 DP 587395	ob61	186°46'00"	C		160.00 C		Class B
PEG 60 DP 587395	PEG 62 DP 587395	ob151	276°46'00"	C		75.75 C		Class B
PEG 62 DP 587395	POST 33 DP 587395	ob153	186°46'00"	C		59.93 C		Class B
PEG 11 DP 587395	PEG 14 DP 587395	ob59	186°46'00"	C		160.00 C		Class B
PEG 14 DP 587395	PEG 15 DP 587395	ob64	96°46'00"	C		78.20 C		Class B
PEG 56 DP 587395	PEG 58 DP 587395	ob148	130°49'00"	C		3.82 C		Class B
PEG 58 DP 587395	PEG 59 DP 587395	ob149	81°28'00"	C		21.00 C		Class B
PEG 59 DP 587395	PEG 61 DP 587395	ob150	85°18'00"	C		29.65 C		Class B

Mark Name	Mark Condition	Description
IS 3 DP 590339		0.2m deep - on knoll



# Mark and Vector

Survey Number DP 587395

Meridional Circuit Taranaki 2000

Mark Name	Mark Condition	Description
IS 4 DP 590339		0.3m deep
IT 1 DP 586643		0.4m deep - on ridge
IT 5 DP 586643		0.2m deep. Berm
IT 6 DP 424069		0.3m deep - berm
PEG 10 DP 587395		PEG SO 21/4 REINSTATED
PEG 63 DP 587395		PEG SO 21/4 REINSTATED

\*\*\* End of Report \*\*\*

# Schedule / Memorandum

---

Land Registration District

**Taranaki**

Survey Number

**LT 587395**

Territorial Authority (the Council)

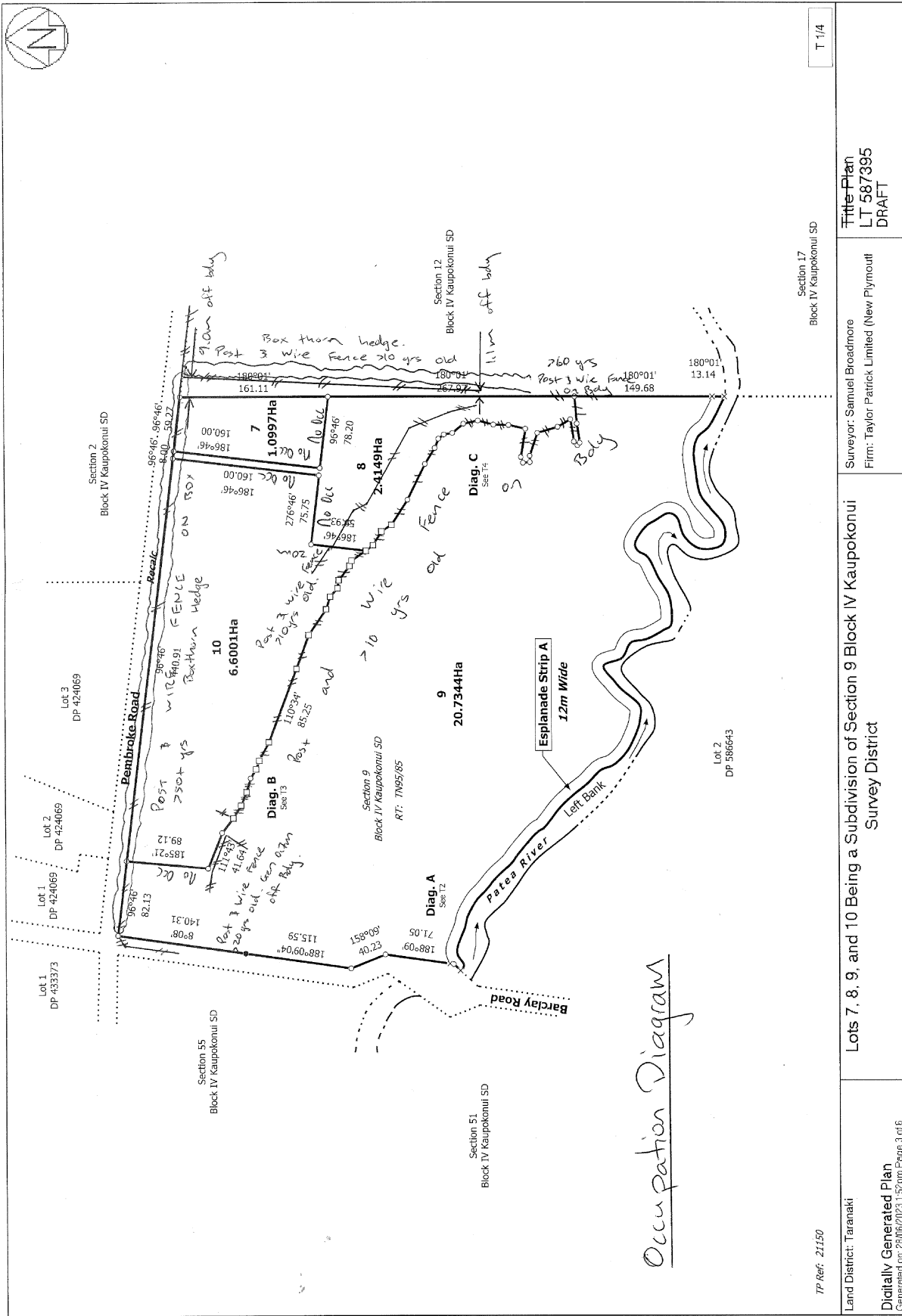
**Stratford District**

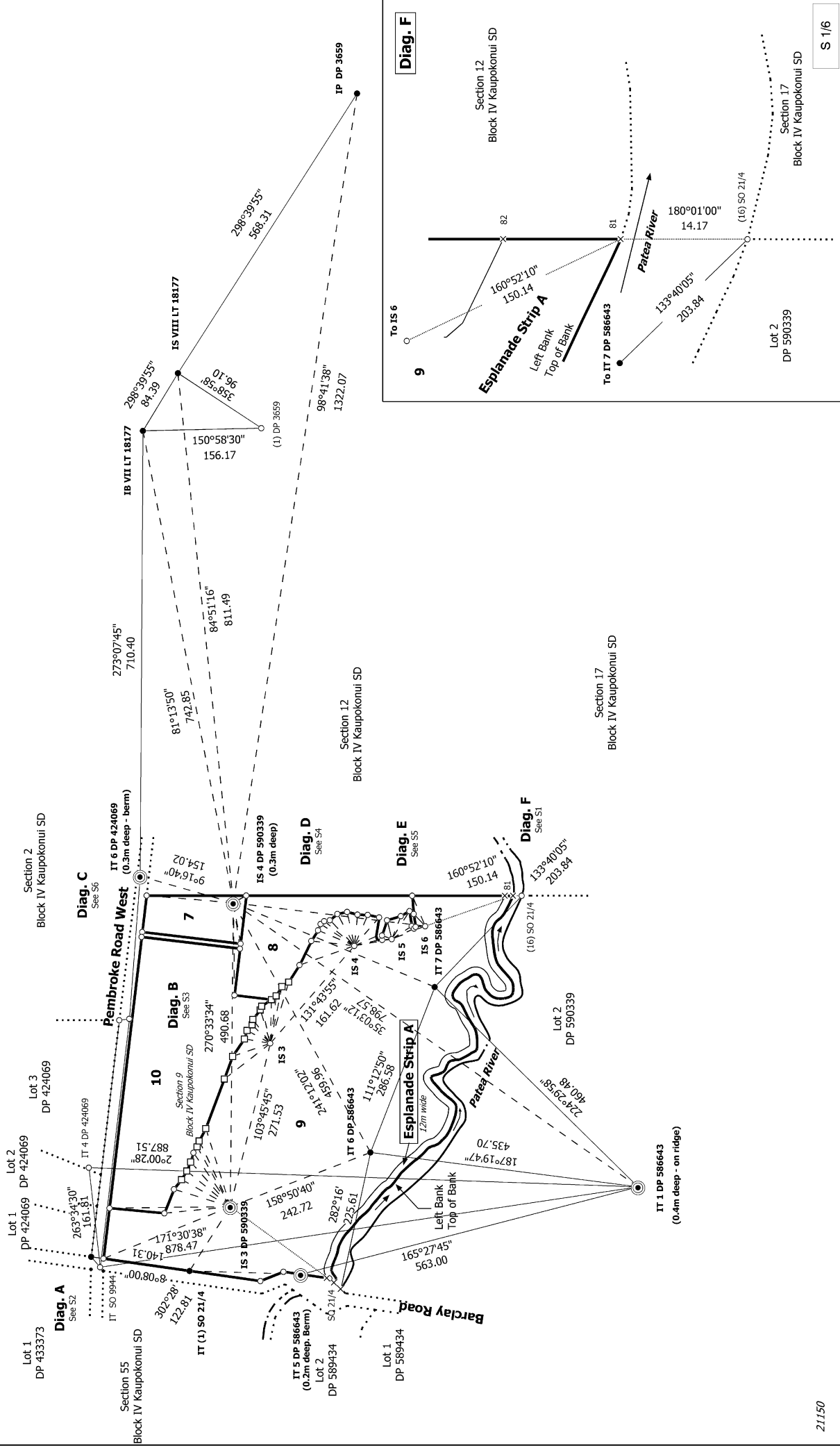
## Notes

Last Edited: 05 May 2023 12:00:30

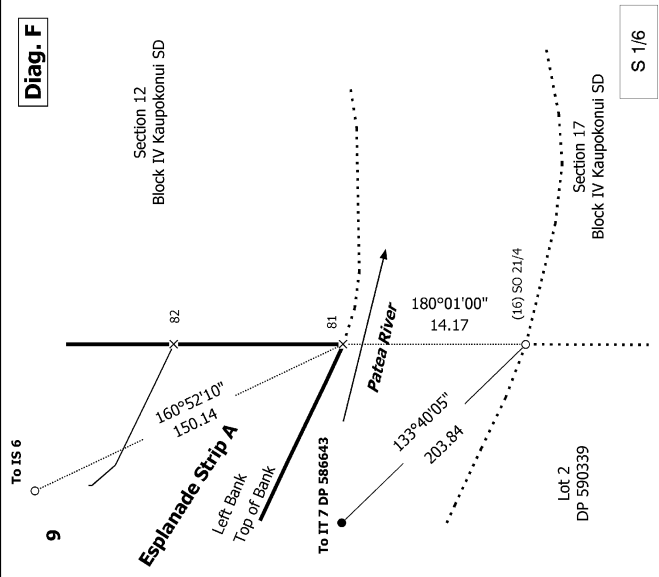
Lot 9 is to be subject to an esplanade strip.

Lots 7, 8, 9 and 10 are to be subject to a consent notice.



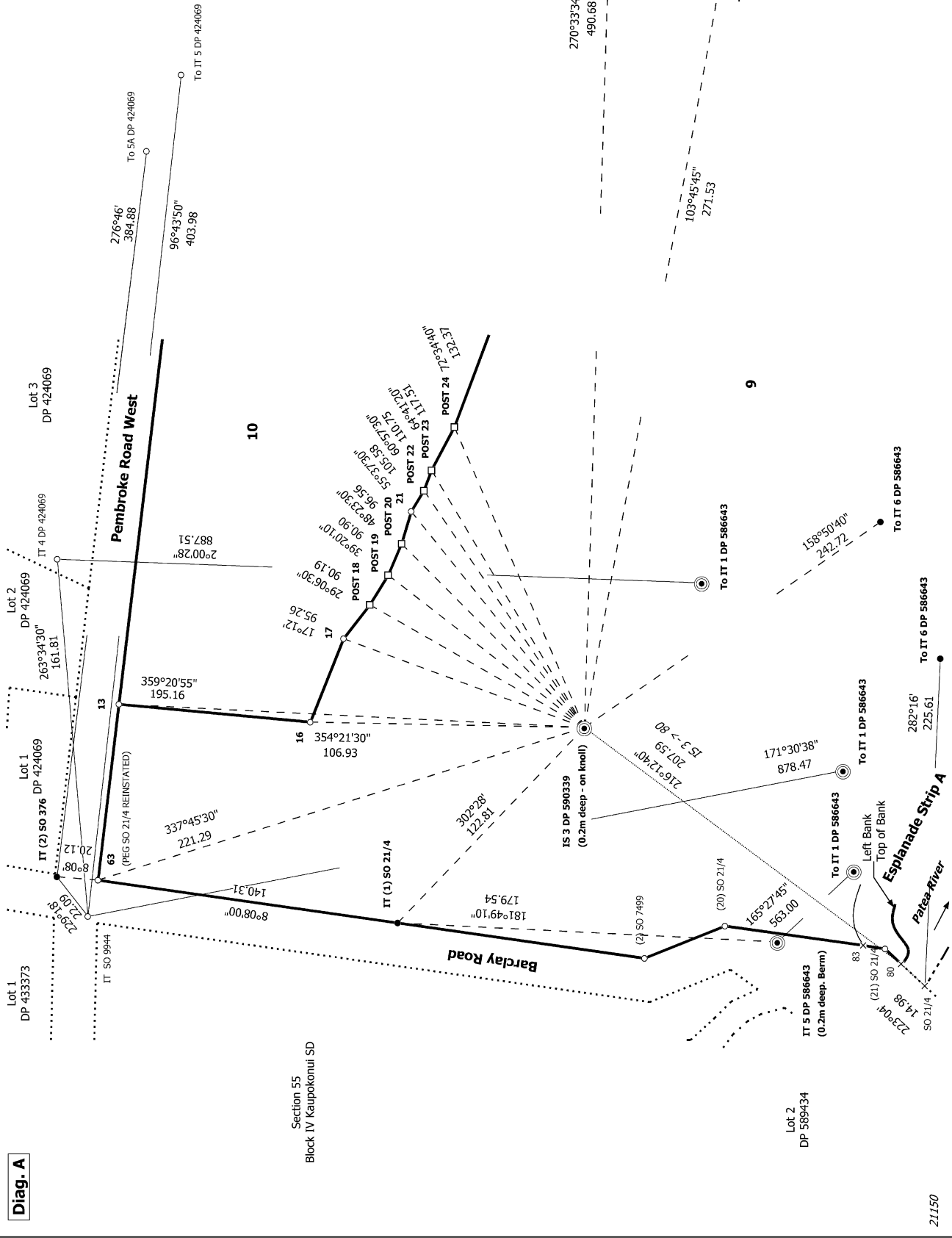


<p>21150</p>	<p>Land District: Taranaki</p>	<p>Surveyor: Samuel Broadmore Firm: Taylor Patrick Limited (New Plymouth) Date of Survey: 20/03/2023</p>	<p>Record of Survey LT 587395 Approved on: 31/10/2023</p>
<p>Section 9 Block IV Kaipokonui SD</p>		<p>Lots 7, 8, 9, and 10 Being a Subdivision of Section 9 Block IV Kaipokonui Survey District</p>	





Diag. A



Section 55  
Block IV Kaipokomui SD

Lot 2  
DP 589434

IT 5 DP 586643  
(0.2m deep, Berm)

IT 1 DP 586643

IT 6 DP 586643

IT 4 DP 424069

IT 5 DP 424069

IT 1 DP 586643

IT 6 DP 586643

IT 4 DP 424069

IT 5 DP 424069

IT 1 DP 586643

IT 6 DP 586643

21150

Land District: Taranaki

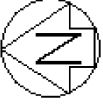
Digitally Generated Plan  
Generated on: 31/10/2023 4:37pm Page 13 of 21

Lots 7, 8, 9, and 10 Being a Subdivision of Section 9 Block IV Kaipokomui  
Survey District

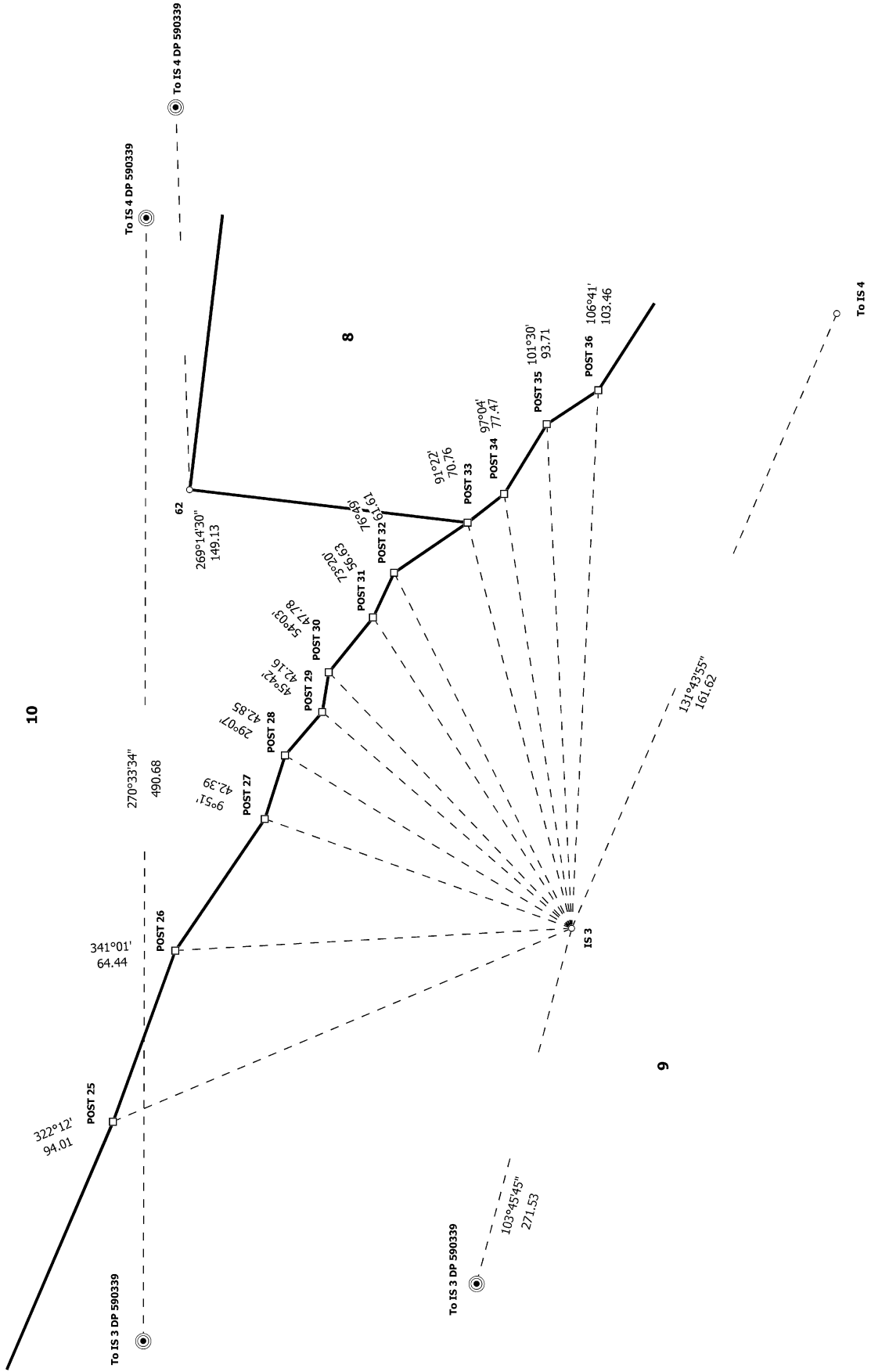
Surveyor: Samuel Broadmore  
Firm: Taylor Patrick Limited (New Plymouth)  
Date of Survey: 20/03/2023

Record of Survey  
LT 587395  
Approved on: 31/10/2023

S 2/6



Diag. B



21150

S 3/6

Land District: Taranaki

Digitally Generated Plan

Generated on: 31/10/2023 4:37pm Page 14 of 21

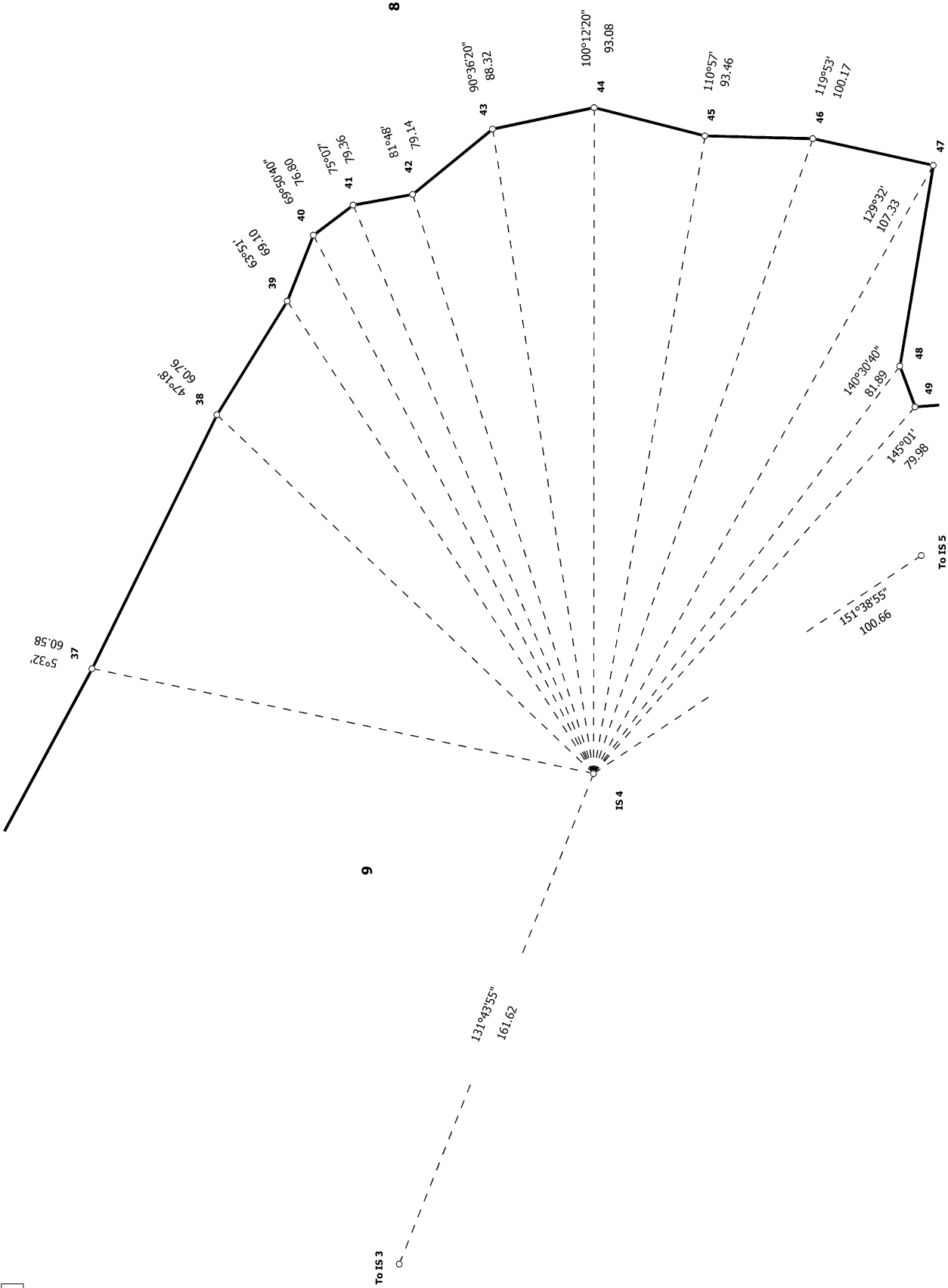
Lots 7, 8, 9, and 10 Being a Subdivision of Section 9 Block IV Kaupokonui Survey District

Surveyor: Samuel Broadmore  
Firm: Taylor Patrick Limited (New Plymouth)  
Date of Survey: 20/03/2023

Record of Survey  
LT 587395  
Approved on: 31/10/2023



Diag. D



21150

S 4/6

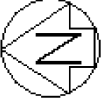
Land District: Taranaki

**Digitally Generated Plan**  
Generated on: 31/10/2023 4:37pm Page 15 of 21

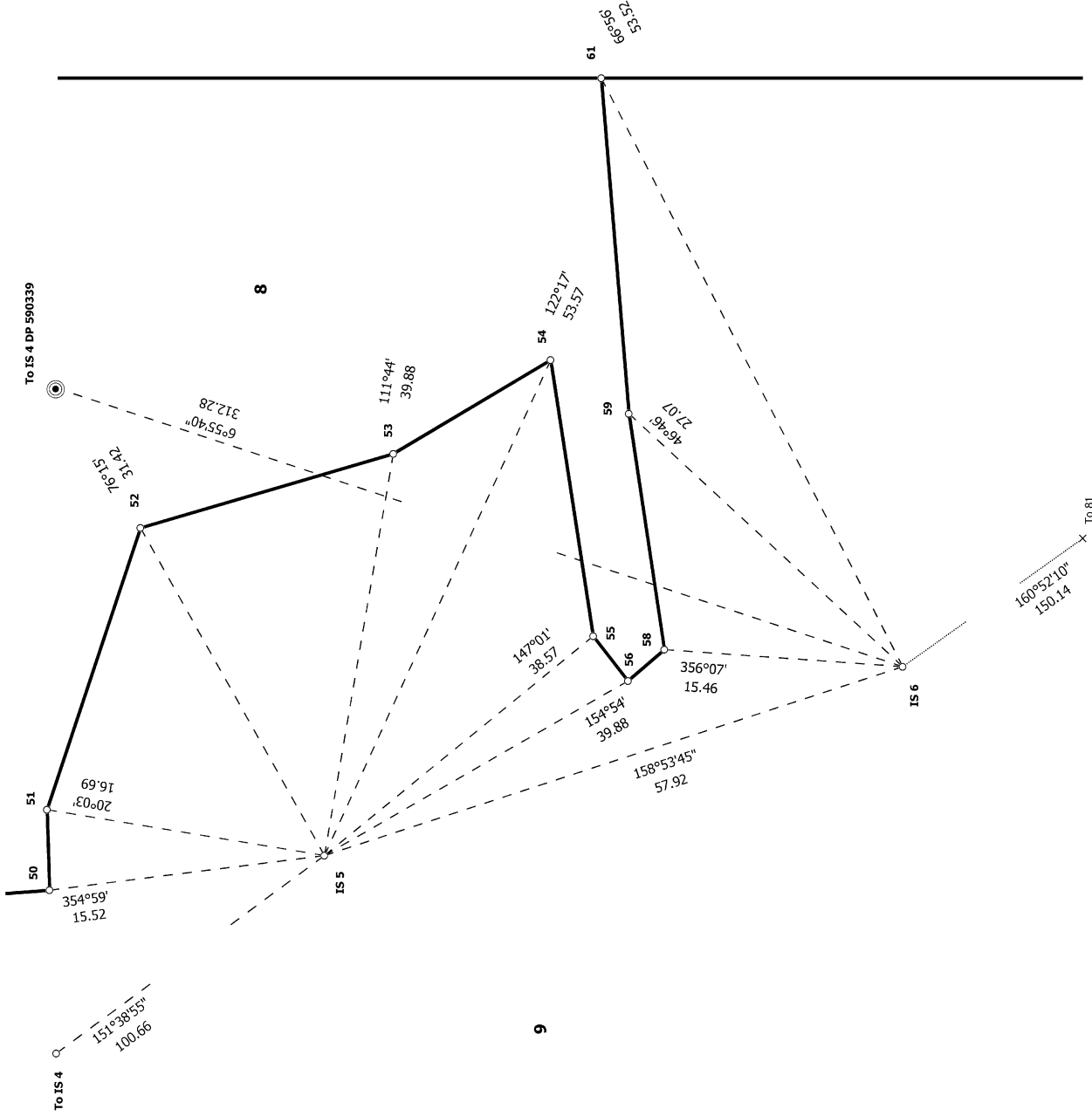
**Lots 7, 8, 9, and 10 Being a Subdivision of Section 9 Block IV Kaupokonui Survey District**

Surveyor: Samuel Broadmore  
Firm: Taylor Patrick Limited (New Plymouth)  
Date of Survey: 20/03/2023

**Record of Survey**  
LT 587395  
Approved on: 31/10/2023



Diag. E



21150

S 5/6

Land District: Taranaki

Digitally Generated Plan

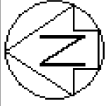
Generated on: 31/10/2023 4:37pm Page 16 of 21

Lots 7, 8, 9, and 10 Being a Subdivision of Section 9 Block IV Kaupokonui Survey District

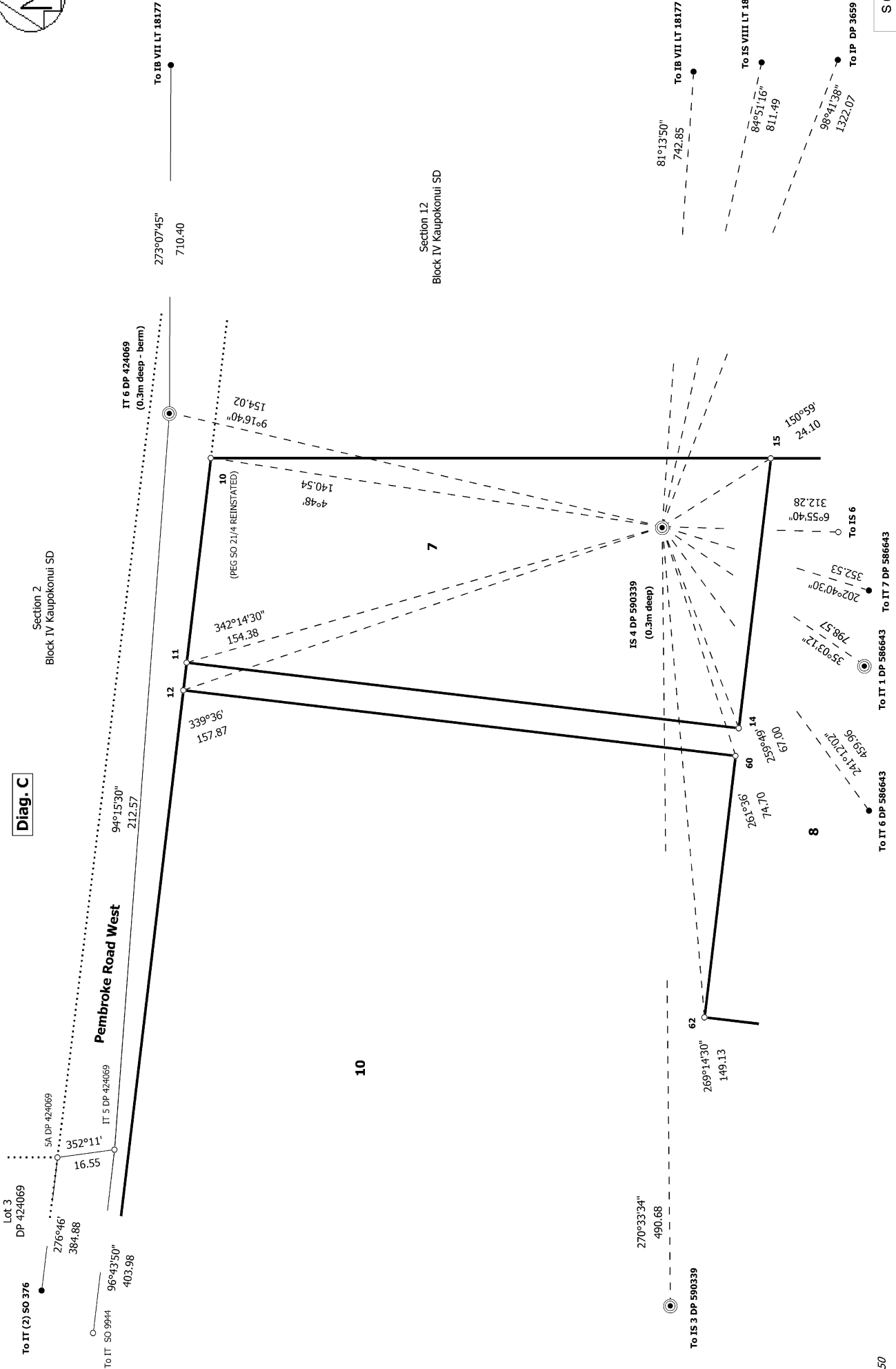
Surveyor: Samuel Broadmore  
Firm: Taylor Patrick Limited (New Plymouth)  
Date of Survey: 20/03/2023

Record of Survey  
LT 587395  
Approved on: 31/10/2023





Diag. C



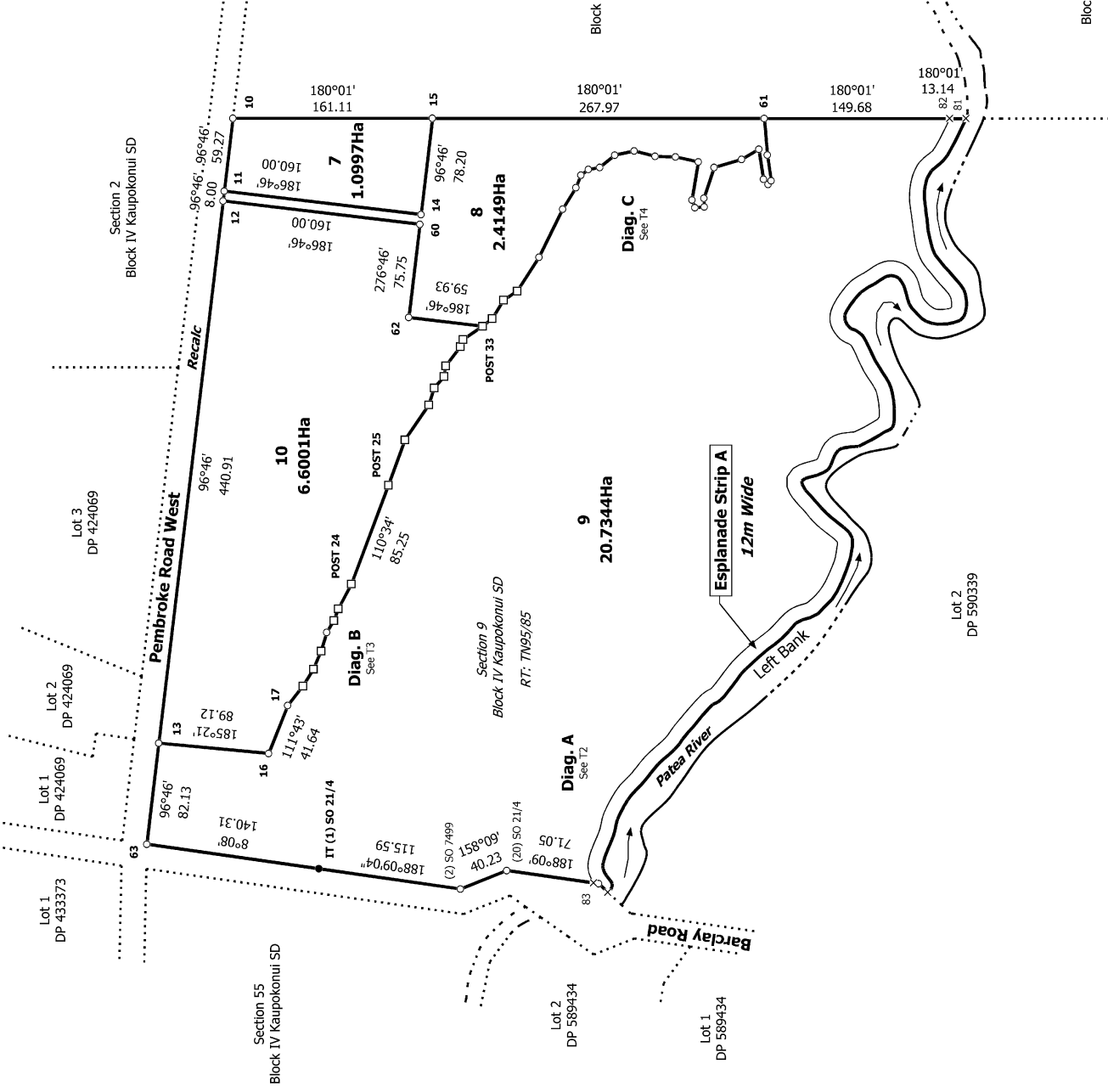
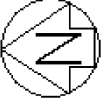
S 6/6

Record of Survey  
 LT 587395  
 Approved on: 31/10/2023

Surveyor: Samuel Broadmore  
 Firm: Taylor Patrick Limited (New Plymouth)  
 Date of Survey: 20/03/2023

Lots 7, 8, 9, and 10 Being a Subdivision of Section 9 Block IV Kaipokonui  
 Survey District

Land District: Taranaki  
 Digitally Generated Plan  
 Generated on: 31/10/2023 4:37pm Page 17 of 21



TP Ref: 21150

Section 17  
Block IV Kaipokonui SD

T 1/4

Land District: Taranaki

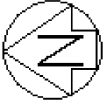
**Digitally Generated Plan**

Generated on: 31/10/2023 4:37pm Page 18 of 21

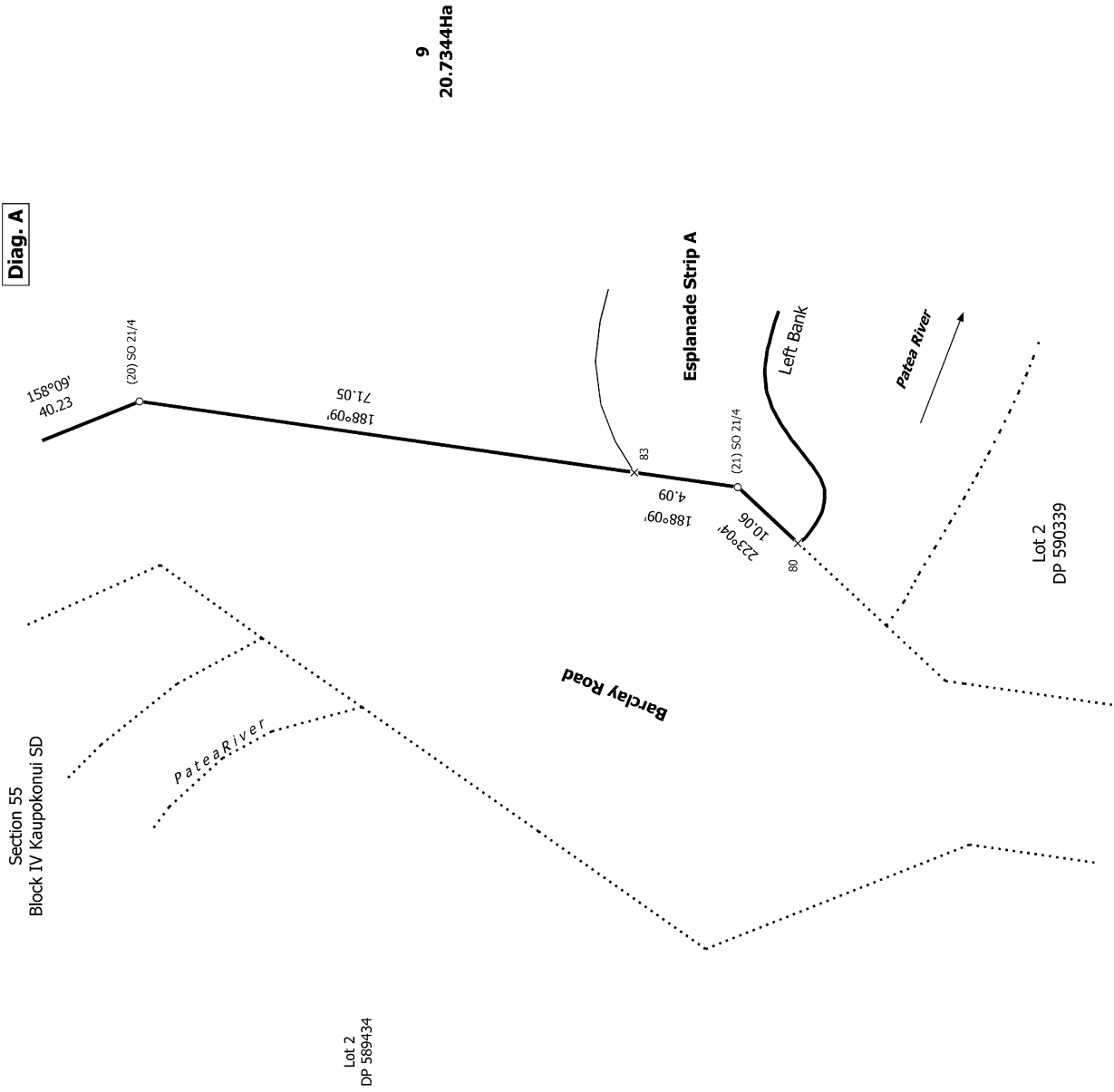
**Lots 7, 8, 9, and 10 Being a Subdivision of Section 9 Block IV Kaipokonui Survey District**

Surveyor: Samuel Broadmore  
Firm: Taylor Patrick Limited (New Plymouth)  
Date of Survey: 20/03/2023

**Record of Survey**  
**LT 587395**  
Approved on: 31/10/2023



**Diag. A**



TP Ref: 21150

T 2/4

Land District: Taranaki

**Digitally Generated Plan**

Generated on: 31/10/2023 4:37pm Page 19 of 21

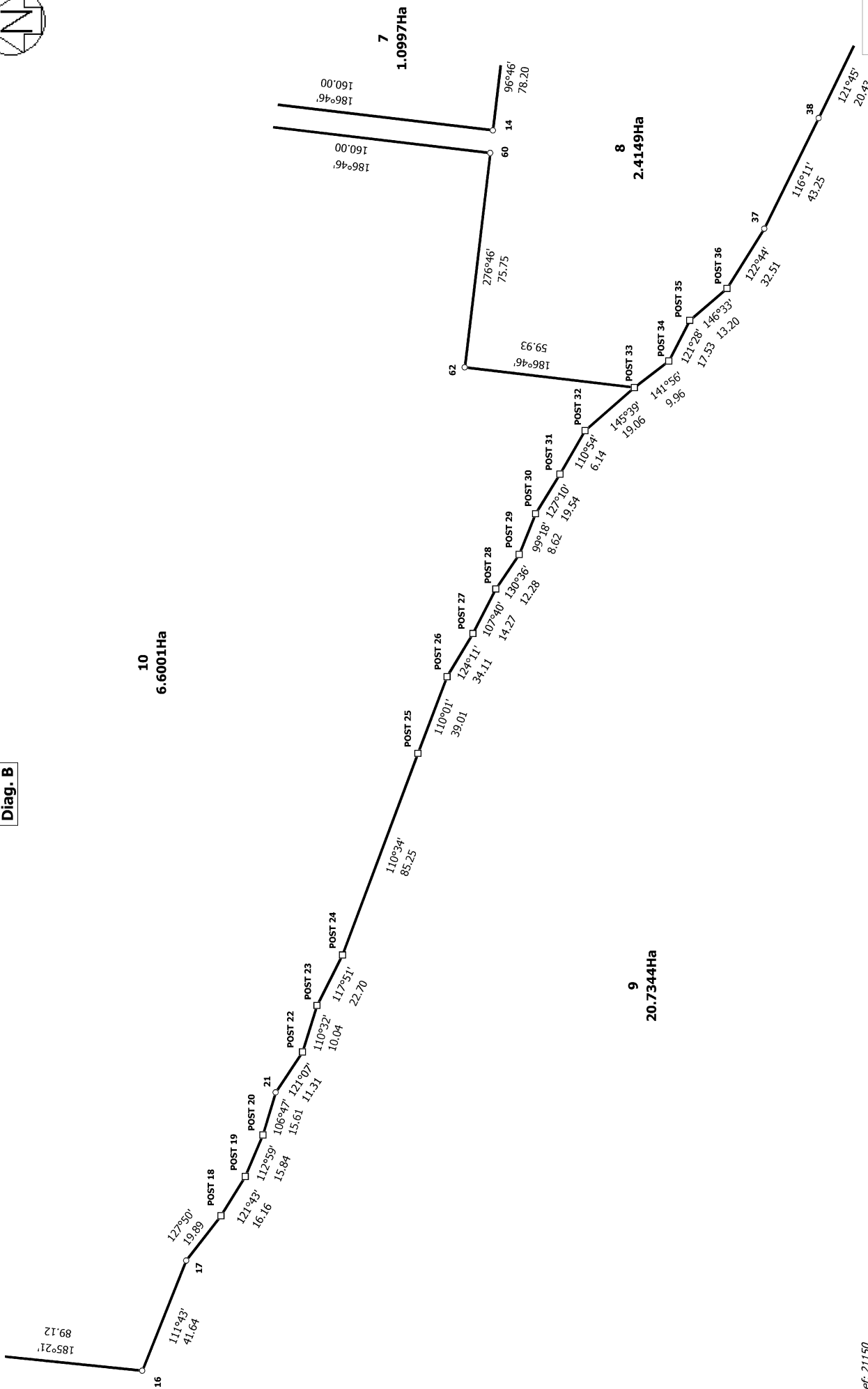
**Lots 7, 8, 9, and 10 Being a Subdivision of Section 9 Block IV Kaipokonui Survey District**

Surveyor: Samuel Broadmore  
Firm: Taylor Patrick Limited (New Plymouth)  
Date of Survey: 20/03/2023

Record of Survey  
LT 587395  
Approved on: 31/10/2023



Diag. B



TP Ref: 21150

Land District: Taranaki

Digitally Generated Plan

Generated on: 31/10/2023 4:37pm Page 20 of 21

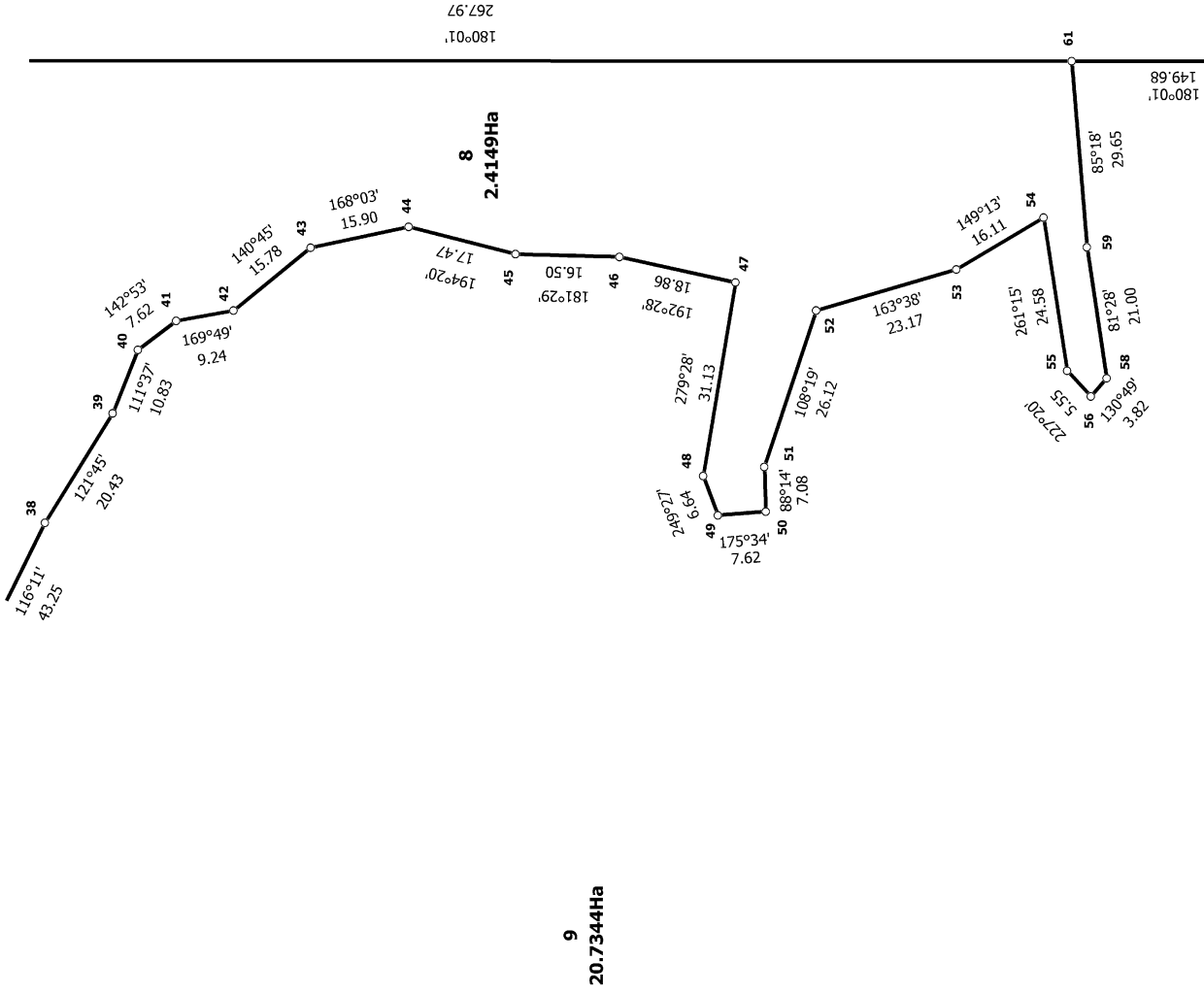
Lots 7, 8, 9, and 10 Being a Subdivision of Section 9 Block IV Kaupokonui Survey District

Surveyor: Samuel Broadmore  
Firm: Taylor Patrick Limited (New Plymouth)  
Date of Survey: 20/03/2023

Record of Survey  
LT 587395  
Approved on: 31/10/2023



Diag. C



TP Ref: 21150

Land District: Taranaki

Digitally Generated Plan

Generated on: 31/10/2023 4:37pm Page 21 of 21

Lots 7, 8, 9, and 10 Being a Subdivision of Section 9 Block IV Kaupokonui Survey District

Surveyor: Samuel Broadmore  
Firm: Taylor Patrick Limited (New Plymouth)  
Date of Survey: 20/03/2023

Record of Survey  
LT 587395  
Approved on: 31/10/2023

T 4/4